

## Search Results

### Evaluate

- FAQ's
- Line Cards
- PDF-Copper Cabli ..
- Performance Data
- PDF-ETL Channel ..

### Design a Solution

- Specification Sheets
- PDF-TX6500 Cabli ..
- PDF-TX6500 Categ ..

### How to Buy

- Bill of Material
- Favorite Products List
- Locate Distributor

### Install & Maintain

- Installation Instructions
- PDF-EZ Brake Sys ..

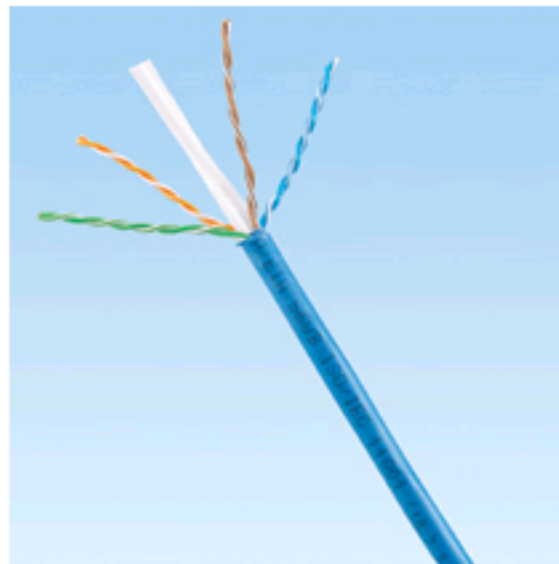
## Home > Product On-Line Catalog > Search Results >

Current refinements (click  to remove) Search Tips [?](#)

☒ Text Search: 'PUR6504YL-UY'

Your search criteria matched only one product, shown below

## PUR6504YL-UY



- Exceeds requirements of ANSI/TIA-568-C.2 Category 6 and ISO 11801 2nd Edition Class E channel standards
- Exceeds requirements of ANSI/TIA-568-C.2 and IEC 61156-5 Category 6 component standards
- Meet requirements of IEEE 802.3af and IEEE 802.3at for PoE applications
- Reduced attenuation maximizes the amount of signal that reaches the receiver, increasing bandwidth
- Third party tested to comply with ANSI/TIA/EIA-568-C.2
- Cable diameter: 0.265 in. (6.8mm) nominal
- Installation temperature range: 32°F to 122°F (0°C to 50°C)
- Operating temperature range: 14°F to 140°F (-10°C to 60°C)
- Channel characterized to 600 MHz, 350 MHz beyond the standard
- Descending length cable markings enable easy identification of remaining cable which reduces installation time and cable scrap

- Cable supplied in an EZBrake™ reel-in-a-box

▪ **Available in North America only**

▪ Part Number	PUR6504YL-UY
▪ RoHS Compliancy Status	Compliant
▪ Note	PUR6504YL-UY replaces PUR6504YL-U
▪ Part Description	Enhanced Category 6, riser (CMR), 4-pair, UTP copper cable. Copper conductors are 23 AWG construction with HDPE insulation. Conductors are twisted in pairs, separated by an integrated pair divider and protected by a flame-retardant PVC jacket.
▪ Product Type	Copper Cable
▪ Color	Yellow
▪ Length (ft.)	1,000
▪ Cable Color	Yellow
▪ Cable Type	UTP
▪ CE Compliant	No
▪ Flammability Rating	CMR
▪ Jacket Material	Flame-retardant PVC
▪ No. of Pairs	4
▪ Performance Level	Enhanced Category 6/Class E
▪ Pricing Description	Copper Cable, Enhanced Cat 6, 4-Pair, 23 AWG, UTP, CMR, Yellow, 1000 Feet/305m
▪ Min. Order UOM	FT
▪ Min. Order Qty.	1000
▪ BOM Qty. (# of Pkgs.)	<input type="text" value="0"/>
▪ Add to Favorite Product List	<input type="button" value=""/>

Please [register](#) to utilize the 'Bill of Materials', 'Submit Quotes' and 'Favorite Product List' features.