

**Ordering number** C11889\_STRADA-SQ-T-DN

Family	Strada-SQ	FWHM	Asym degrees
Type	Lens	Efficiency	92 %
LED	LUXEON Rebel ES	cd/lm	-
Color	Clear	Gerber File	Available
Diameter	25 + 25 mm		
Height	7.9 mm		
Style	Square		
Optic Material	PMMA		
Holder Material	-		
Fastening	Screw, pin, glue		
Status	Ready		

**NOTE:** The typical divergence will be changed by different color, chip size and chip position tolerance. The typical total divergence is the full angle measured where the luminous intensity is half of the peak value.



# PRODUCT DATASHEET

## Strada-SQ series

last update 10/9/2012

PHILIPS  
LUMILEDS

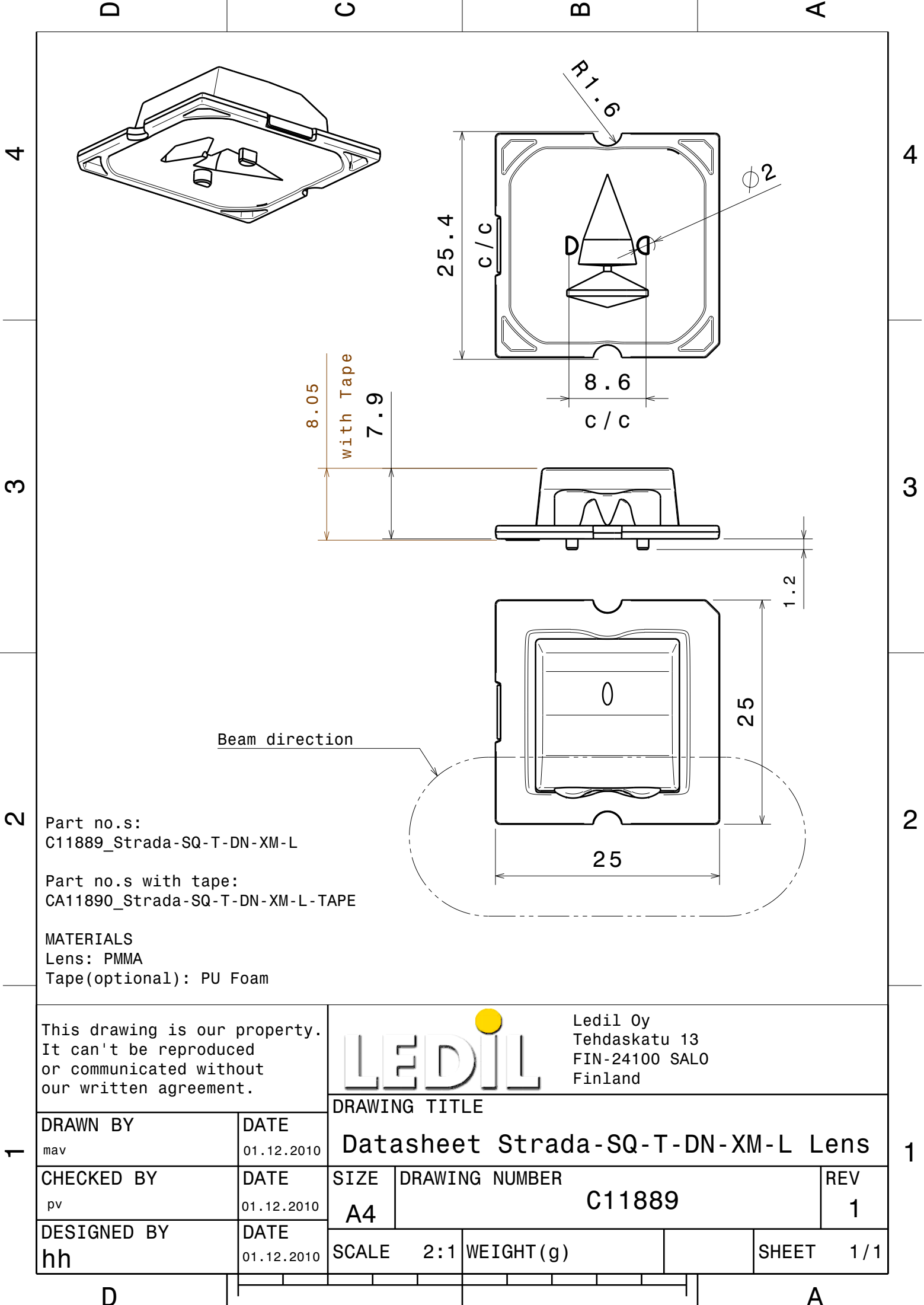
### GENERAL INFORMATION

- Product series especially designed & optimized for LUXEON Rebel ES series of LEDs.
- Special care taken to make light distribution as uniform as possible.
- Lens material optical grade PMMA with high UV and temperature resistance. Allows use of high current and temperature conditions.

Please find more information about used material from below:

[http://ledil.fi/sites/default/files/Documents/Technical/Material/PMMA%20N%20UL94\\_Yellow%20Card.pdf](http://ledil.fi/sites/default/files/Documents/Technical/Material/PMMA%20N%20UL94_Yellow%20Card.pdf)

<http://ledil.fi/sites/default/files/Documents/Technical/Material/PMMA%20N%20PLEXIGLAS-Datasheet.pdf>



Part no.s:  
C11889\_Strada-SQ-T-DN-XM-L

Part no.s with tape:  
CA11890\_Strada-SQ-T-DN-XM-L-TAPE

MATERIALS  
Lens: PMMA  
Tape(optional): PU Foam

This drawing is our property.  
It can't be reproduced  
or communicated without  
our written agreement.



Ledil Oy  
Tehdaskatu 13  
FIN-24100 SALO  
Finland

DRAWING TITLE

Datasheet Strada-SQ-T-DN-XM-L Lens

DRAWN BY mav	DATE 01.12.2010
CHECKED BY pv	DATE 01.12.2010
DESIGNED BY hh	DATE 01.12.2010

SIZE A4	DRAWING NUMBER C11889	REV 1
SCALE 2:1	WEIGHT (g)	SHEET 1/1