

MICRO SWITCH

FREEPORT ILLINOIS, U.S.A
A DIVISION OF HONEYWELL
FED. MFG. CODE 91929

ASSEMBLY- PUSHBUTTON SWITCH

CATALOG LISTING
IPB555-T2

IPB555-T2

PAGE 1 OF 1

M

DRAWING
NUMBER

ISSUE
4

REPLACES

RELEASE NO. PR-5476

18 JUN 08

BLR

CHECK

30 OCT 98

JAF

CHECK

19 JAN 76

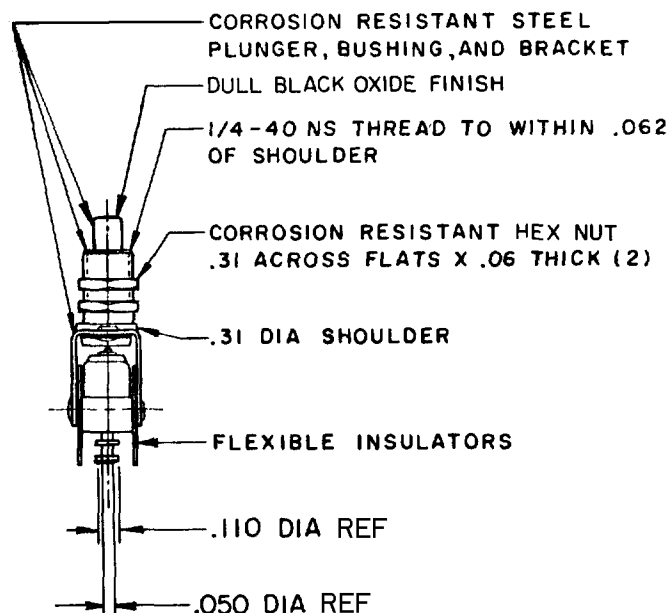
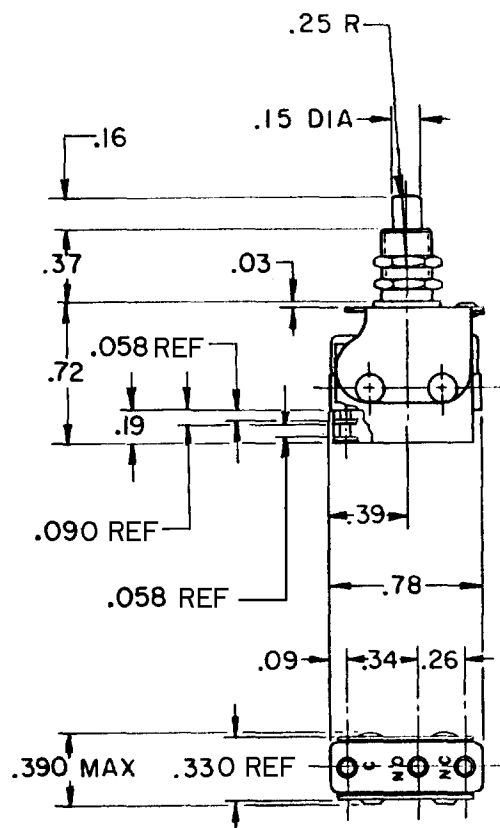
RAW

CHECK

15 JAN 76

FO-52848-A

DRAWN



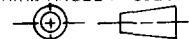
NOTES

- 1 - UNIT INCLUDES CAT. LIST. "2ISM" BASIC SWITCH
- 2 - TERMINALS ARE PLATED FOR SOLDERING
- 3 - RECOMMENDED FOR MANUAL OPERATION ONLY

RASTER

THIS DRAWING COVERS A PROPRIETARY ITEM AND IS THE PROPERTY OF MICRO SWITCH, A DIVISION OF HONEYWELL. THIS DRAWING IS NOT TO BE COPIED OR USED WITHOUT THE APPROVAL OF MICRO SWITCH.

THIRD ANGLE PROJECTION



CHARACTERISTICS

OPERATING FORCE --- 1 LB APPROX

TOTAL TOTAL --- .030 APPROX

ELECTRICAL DATA

CONTACT ARRANGEMENT
S P D T

250 VAC --- 5 AMP
30 VOLTS DC RATING
INDUCTIVE --- SEA LEVEL --- 3 AMP
50,000 FT --- 2.5 AMP
RESISTIVE --- SEA LEVEL --- 5 AMP
50,000 FT --- 5 AMP
MAXIMUM INRUSH --- 24 AMP

SCALE -

DO NOT SCALE PRINT

TOLERANCES

APPLY TO DESIGN UNITS. CONVERSIONS ARE ONLY FOR REFERENCE. UNLESS NOTED, TOLERANCES ARE ±

DIM.	TOL.	DIM.	TOL.
mm	mm/in	in	mm/in
NO PLACES	X	1/64	
ONE PLACE	X,X	0.01/015	X,X
TWO PLACES	X,XX	0.001/006	X,XX
THREE PLACES	X,XXX		X,XXX
ANGLES			

DESIGN UNITS ☐ SI METRIC

☒ US CUSTOMARY

WEIGHT

Mouser Electronics

Authorized Distributor

Click to View Pricing, Inventory, Delivery & Lifecycle Information:

[Honeywell:](#)

[1PB555-T2](#)