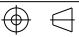
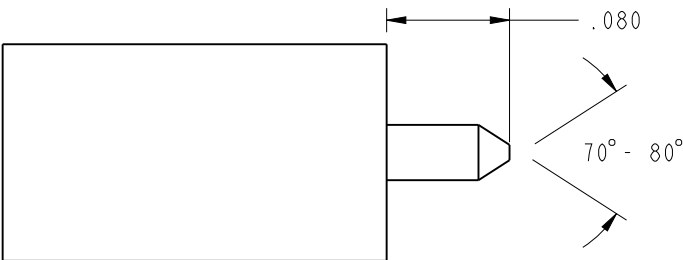
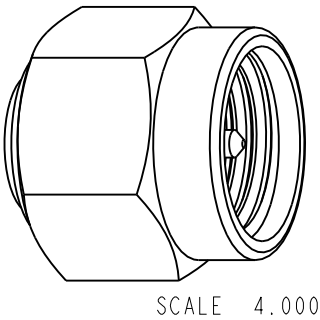
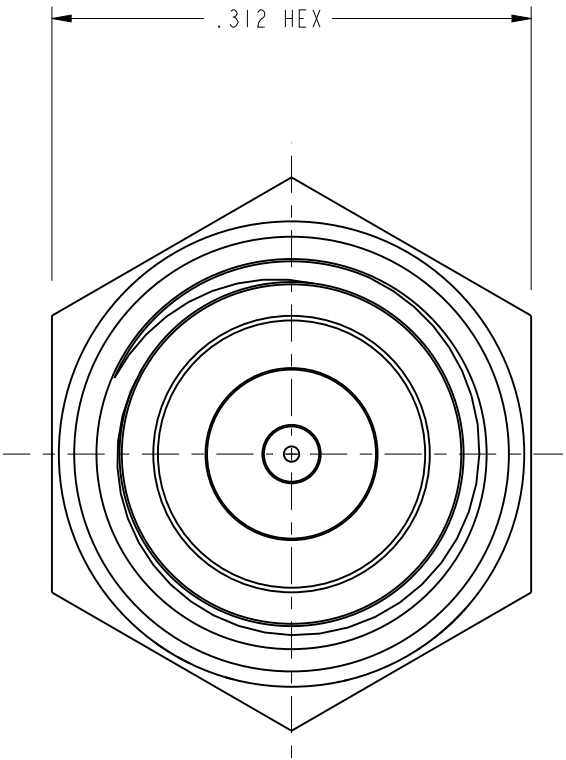
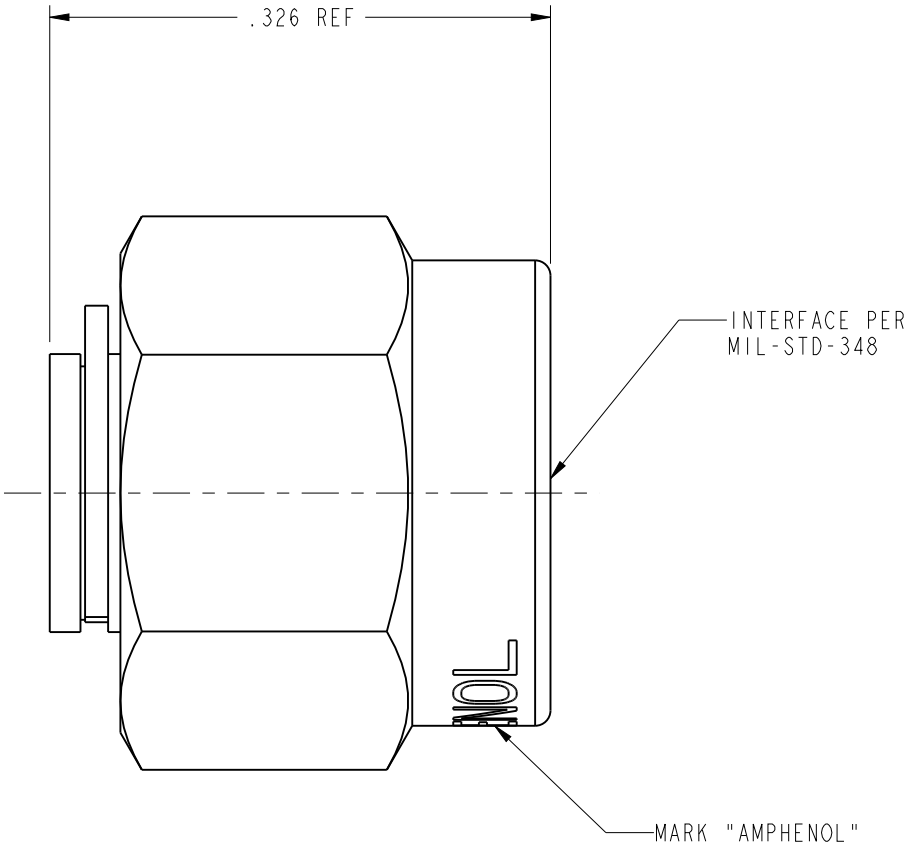


NOTES:

1. MATERIALS OF CONSTRUCTION:
BODY = BERYLLIUM COPPER, GOLD PLATED
COUPLING NUT = STAINLESS STEEL, PASSIVATED
CONTACT = BERYLLIUM COPPER, GOLD PLATED
INSULATORS = TEFLON, FLUOROCARBON
RETAINING RING = BERYLLIUM COPPER, NICKEL PLATED)
2. VSWR: 1,19 MAX FROM DC TO 26.5 GHz.

901-9861		REVISIONS				
DRAWING NO.	REV	DESCRIPTION	DATE	ECO	APPR	
THIRD ANGLE PROJ. 	--	RELEASE TO MFG.	-----	-----	-----	
	C	SEE SHEET 1	5/22/00	43387	CPM	
	D	SEE SHEET 1	5/30/02	44060	CPM	
	E	SEE SHEET 1	1/31/05	45285	CPM	
	F	BeCu BODY WAS STAINLESS STEEL	3/7/05	45429	MAH	
	G	SEE SHEET 1	3/11/05	45444	CPM	
	H	SEE SHEET 1	9/27/06	46287	CPM	
	J	UPDATED STRIPPING DIMENSIONS PER CUSTOMER REQUEST	7/17/09	47663	TRC	
	K	SEE SHEET 1	12/8/11	48871	MJN	



RECOMMENDED CABLE
STRIPPING DIMENSIONS
SCALE 8.000

CUSTOMER OUTLINE DRAWING
ALL OTHER SHEETS ARE FOR INTERNAL USE ONLY

UNLESS OTHERWISE SPECIFIED, DIMENSIONS ARE IN INCHES AND TOLERANCES ARE: 2 PLACE DECIMAL 3 PLACE DECIMAL ANGLES ±.015 (0,381 mm) ±.005 (0,127 mm) ± 1°	MATERIAL	DRAWN C. McGRATH	DATE 19-May-00	TITLE SMA PLUG SOLDER TYPE FOR Ø.086 SRC		Amphenol RF Danbury, CT, USA Tainan, Taiwan Shenzhen, China www.amphenolrf.com		
		ENGINEER P. BRENZEL	DATE 19-May-00					
	REFERENCE EAR 111-964561 615X-1273-100 GEN# ASSYM21-SMA	APPROVED O. BARTHELMES	DATE 30-May-02	SCALE: 8.0:1		SHEET 2 OF 2		
		CAD FILE I:\SMA\901-9861						
NOTICE - These drawings, specifications, or other data (1) are, and remain the property of Amphenol Corp. (2) must be returned upon request; and (3) are confidential and not to be disclosed to any person other than those to whom they are given by Amphenol Corp. The furnishing of these drawings, specifications, or other data by Amphenol Corp., or to any other person to anyone for any purpose is not to be regarded by implication or otherwise in any manner licensing, granting rights or permitting such holder or any other person to manufacture, use or sell any product, process or design, patented or otherwise, that may in any way be related to or disclosed by said drawings, specifications, or other data.			CODE ID 74868	DWG SIZE B	DRAWING NO. 901-9861		REV K	