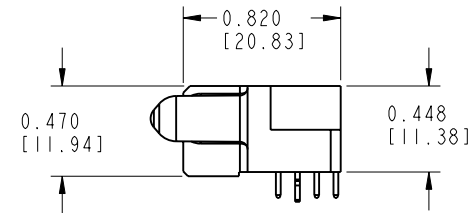
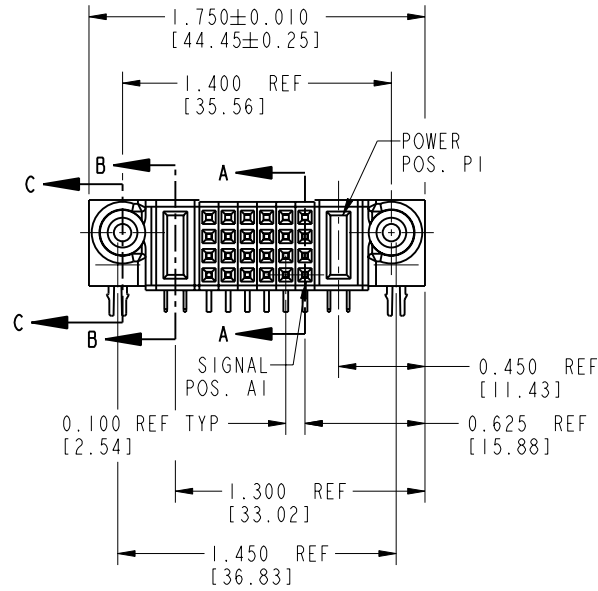


Tous droits strictement reserves. Reproduction ou communication a des tiers interdite sous quelque forme que ce soit sans autorisation écrite du propriétaire. Propriété de c FCI. Droits de reproduction FCI.

FCI

All rights strictly reserved. Reproduction or issue to third parties in any form whatever is not permitted without written authority from the proprietor. Property of FCI. Copyright FCI.

PRODUCT No.	ROWS	POWER		SIGNAL					POWER	
		E2	P2	6	5	4	3	2	P1	E1
51770-005-- NOTE: 1	D C B A		PC	H	H	H	H	H	PA	
				G	G	G	G	G		
				F	F	F	F	F		
				E	E	E	E	E		



CODE	DIM "M" ±0.010 [0.25]		CONTACT TYPE
E	N/A	[N/A]	SIGNAL
F	N/A	[N/A]	SIGNAL
G	N/A	[N/A]	SIGNAL
H	N/A	[N/A]	SIGNAL
PA	0.042	[1.07]	POWER
PC	0.092	[2.34]	POWER
HA	N/A	[N/A]	HOLD-DOWN

mat'l code				SEE NOTE 1		tolerances unless otherwise specified		CUSTOMER		 www.fciconnect.com	
lfr	ecn no.	dr	date					COPY			
A	V12149	JRW	08/09/01	linear		.XX±.01/0.X±0.3		projection 	INCH/MM scale 1:1	title IP + 24S + IP RIGHT ANGLE SOLDER RECEPTACLE	
B	V21513	TAB	10/04/02			.XXX±.005/0.XX±0.13					
C	DG05-0530	GuoJM	12/08/05			.XXX±.0020/0.XXX±0.051					
				dr	J. WITMER	08/09/01				product family	PwrBlade
				enqr	E. TREECE	08/09/01				size	213
				chr	E. TREECE	08/09/01				dwg no	51770-005
				appd	E. TREECE	08/09/01				sheet	1 of 2
sheet index	revision sheet	C	C								
		1	2								

Pro/E

3

cage code 22526

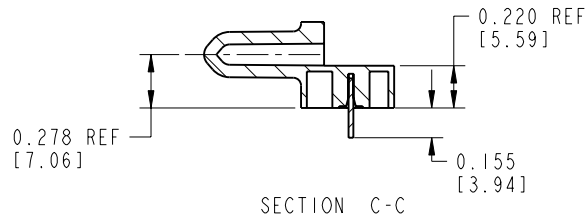
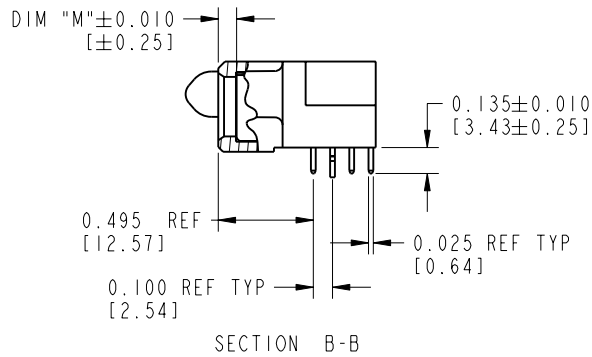
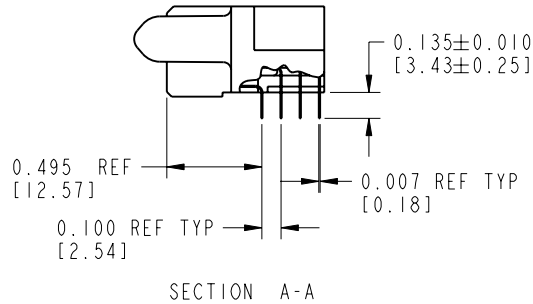
4

PDM: Rev:C

STATUS: Released

Printed: Oct 08, 2006

PRODUCT NUMBER
51770-005--
NOTE: 1

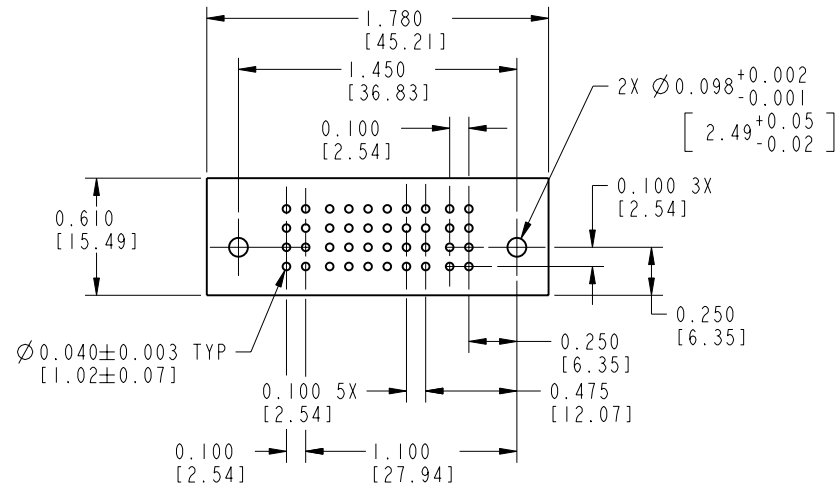


CONNECTOR NOTES:

① FOR ADDITIONAL INFORMATION, REFER TO DRAWING NUMBER 51770.

PCB NOTES:

2. ALL DIMENSIONS ARE BASIC UNLESS OTHERWISE SPECIFIED.
3. ALL THROUGH HOLES ARE LOCATED WITH A TRUE POSITION OF 0.004 [0.10]
4. ALL HOLE DIAMETERS ARE FINISHED HOLE SIZE.
5. $\varnothing 0.098$ [2.49] THROUGH HOLES ARE UNPLATED.
6. $\varnothing 0.0453 \pm 0.0010$ [1.151 ± 0.025] DRILLED HOLES PLATED WITH 0.0003 [0.008] MIN SnPb OVER 0.001 [0.03] TO 0.003 [0.08] Cu PLATING TO ACHIEVE A $\varnothing 0.040 \pm 0.003$ [1.02 ± 0.07] HOLE.



CONFIDENTIAL

mat'l code				tolerances unless otherwise specified		CUSTOMER		FCI			
lfr	ecn no.	dr	date	linear	projection	COPY		www.fciconnect.com			
c				.XX±.01/0.X±0.3				title			
				.XXX±.005/0.XX±0.13				IP + 24S + IP			
				.XXXX±.0020/0.XXX±0.051				RIGHT ANGLE SOLDER RECEPTACLE			
				angles				product family			
				dr	J. WITMER 08/09/01	INCH/MM		PwrBlade		code	
				engr	E. TREECE 08/09/01			size		213	
				chr	E. TREECE 08/09/01			dwg no		sheet	
				appd	E. TREECE 08/09/01	scale		A		2	
sheet index		revision sheet									

Pro/E

3

cage code 22526

4