



TS8P01G THRU TS8P07G

Single Phase 8.0 Amps. Glass Passivated Bridge Rectifiers



Voltage Range
50 to 1000 Volts
Current
8.0 Amperes

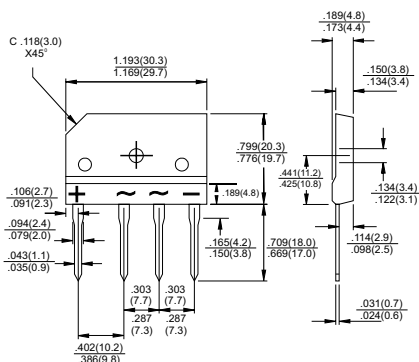
Features

- ✧ UL Recognized File # E-96005
- ✧ Glass passivated junction
- ✧ Ideal for printed circuit board
- ✧ Reliable low cost construction
- ✧ Plastic material has Underwriters Laboratory Flammability Classification 94V-0
- ✧ Surge overload rating to 170 amperes peak
- ✧ High case dielectric strength of 2000V_{RMS}

Mechanical Data

- ✧ Case: Molded plastic
- ✧ Terminals: Leads solderable per MIL-STD-750 Method 2026
- ✧ Weight: 0.3 ounce, 8 grams
- ✧ Mounting torque: 8.71 in. lbs. max.

TS-6P



Dimensions in inches and (millimeters)

Maximum Ratings and Electrical Characteristics

Rating at 25°C ambient temperature unless otherwise specified.

Single phase, half wave, 60 Hz, resistive or inductive load.

For capacitive load, derate current by 20%

Type Number	TS8P 01G	TS8P 02G	TS8P 03G	TS8P 04G	TS8P 05G	TS8P 06G	TS8P 07G	Units
Maximum Recurrent Peak Reverse Voltage	50	100	200	400	600	800	1000	V
Maximum RMS Voltage	35	70	140	280	420	560	700	V
Maximum DC Blocking Voltage	50	100	200	400	600	800	1000	V
Maximum Average Forward Rectified Current See Fig. 2	8.0							A
Peak Forward Surge Current, 8.3 ms Single Half Sine-wave Superimposed on Rated Load (JEDEC method)	170							A
Maximum Instantaneous Forward Voltage @ 8.0A	1.1							V
Maximum DC Reverse Current @ T _A =25°C at Rated DC Blocking Voltage @ T _A =125°C	5.0 500							uA uA
Typical Thermal Resistance (Note) R _{θJC}	1.6							°C/W
Operating Temperature Range T _J	-55 to +150							°C
Storage Temperature Range T _{STG}	-55 to +150							°C

Note: Thermal Resistance from Junction to Case with Device Mounted on 100mm x 100mm x 1.6mm Cu Plate Heatsink.

RATINGS AND CHARACTERISTIC CURVES (TS8P01G THRU TS8P07G)

FIG.1- MAXIMUM NON-REPETITIVE FORWARD SURGE CURRENT PER BRIDGE ELEMENT

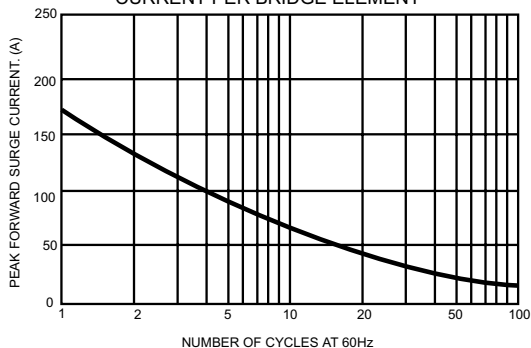


FIG.2- MAXIMUM FORWARD CURRENT DERATING CURVE

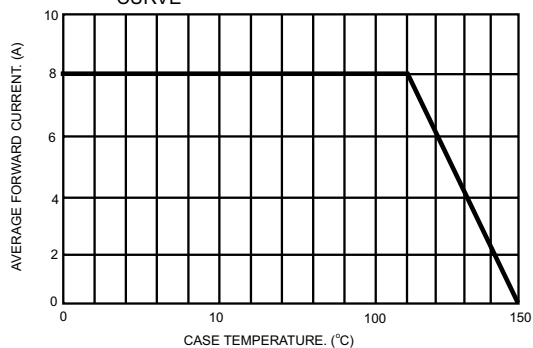


FIG.3- TYPICAL INSTANTANEOUS FORWARD CHARACTERISTICS PER BRIDGE ELEMENT

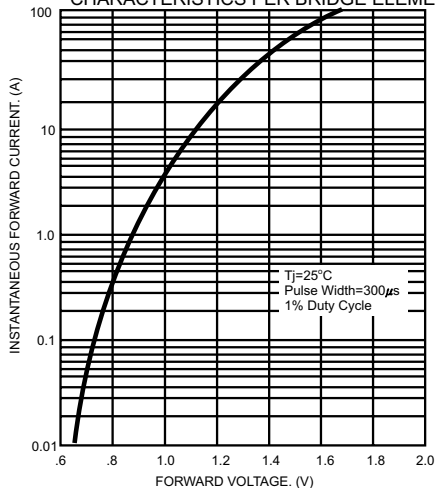


FIG.4- TYPICAL REVERSE CHARACTERISTICS PER BRIDGE ELEMENT

