

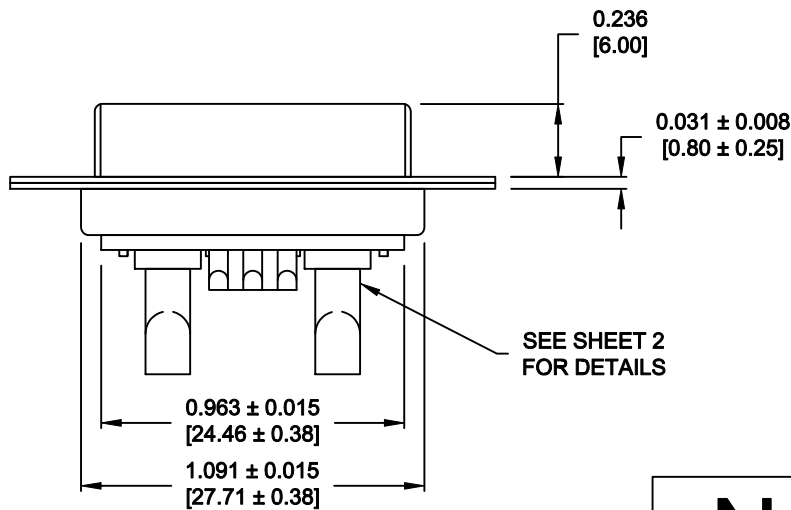
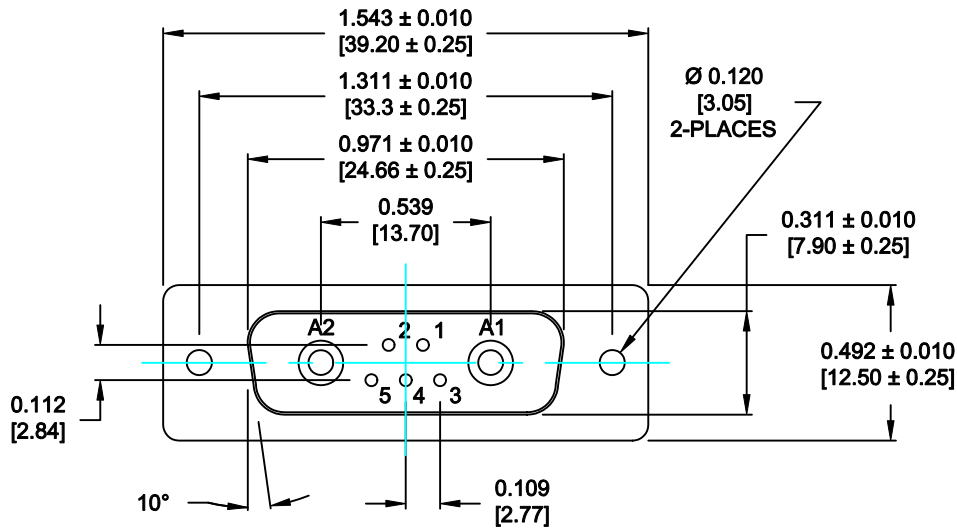
SPECIFICATIONS:

**ELECTRICAL:**  
INSULATOR RESISTANCE: 5 G OHMS Min.  
DIELECTRIC WITHSTANDING: 1,000 VAC for 1 MINUTE  
OPERATING TEMPERATURE: -55° C ~ +155° C  
POWER CONTACT RESISTANCE: 1.0 Milliohms Max.  
SIGNAL CONTACT RESISTANCE: 2.7 Milliohms Max.  
POWER PINS: SEE PART No. BELOW  
SIGNAL PINS: 5 AMPS

**MECHANICAL:**  
CONTACT INSERTION FORCE: 4.5 Kg Max.  
CONTACT SEPARATOR FORCE: 0.3Kg Min.

**MATERIALS:**  
CONTACTS: COPPER ALLOY  
INSULATOR: PBT UL94V-0 RATED, BLK  
230°C PROCESS TEMP.  
STEEL

**SHELL:**  
**FINISH:**  
SHELL: NICKEL  
CONTACTS: FULL GOLD FLASH




680M7W2203LYY1

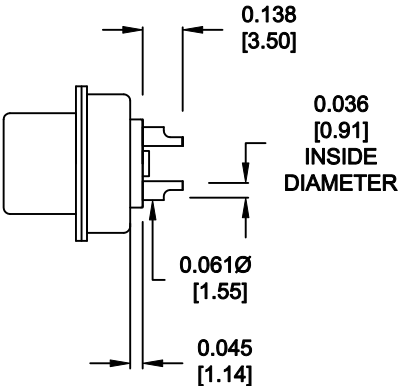
M = MACHINED CONTACTS

20 = 20 AMPS  
40 = 40 AMPS

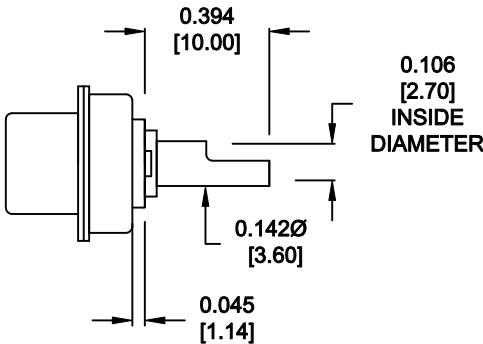
RoHS COMPLIANT

	THESE DRAWINGS AND SPECIFICATIONS ARE THE PROPERTY OF NorComp AND SHALL NOT BE REPRODUCED, COPIED OR USED AS THE BASIS FOR THE MANUFACTURE OF SALE OF APPARATUS WITHOUT WRITTEN PERMISSION.	DRAWN: <b>M. SIGMON</b>		DATE: <b>08-20-12</b>		
		CHECKED: <b>X</b>		DATE: <b>X</b>		
<b>NorComp</b>		SCALE: <b>N.T.S.</b>	SHEET <b>1</b>		OF <b>2</b>	REV <b>0</b>
		DWG NO. <b>680M7W2203LYY1</b>				

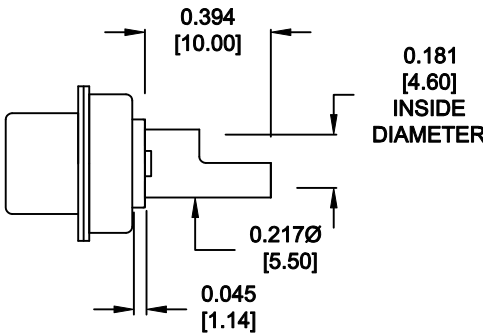
NOTE:  
SIGNAL AND POWER CONTACTS  
COME PRE-LOADED INTO INSULATORS



SIGNAL CONTACTS  
ACCEPTS UP TO 20 AWG WIRE




20 AMP POWER CONTACTS  
ACCEPTS UP TO 12 AWG WIRE



40 AMP POWER CONTACTS  
ACCEPTS UP TO 8 AWG WIRE

RoHS COMPLIANT

	THESE DRAWINGS AND SPECIFICATIONS ARE THE PROPERTY OF NorComp AND SHALL NOT BE REPRODUCED, COPIED OR USED AS THE BASIS FOR THE MANUFACTURE OF SALE OF APPARATUS WITHOUT WRITTEN PERMISSION.	DRAWN: <b>M. SIGMON</b>		DATE: <b>08-20-12</b>	
		CHECKED: <b>X</b>		DATE: <b>X</b>	
<b>NorComp</b>	SCALE: <b>N.T.S.</b>	SHEET <b>2</b>		OF <b>2</b>	REV <b>0</b>
	DWG NO. <b>680M7W2203LYY1</b>				

# Mouser Electronics

Authorized Distributor

Click to View Pricing, Inventory, Delivery & Lifecycle Information:

NorComp:

[680M7W2203L201](#) [680M7W2203L401](#)