

## FAN4174 / FAN4274

### Single and Dual, Rail-to-Rail I/O, CMOS Amplifier

#### Features

- 200  $\mu$ A Supply Current per Amplifier
- 3.7 MHz Bandwidth
- Output Swing to Within 10 mV of Either Rail
- Input Voltage Range Exceeds the Rails
- 3 V /  $\mu$ s Slew Rate
- 25 nV /  $\sqrt{\text{Hz}}$  Input Voltage Noise
- Replaces KM4170 and KM4270
- FAN4174 Competes with OPA340 and TLV2461; Available in a SOT23-5 Package
- FAN4274 Competes with OPA2340 and TLV2462; Available in MSOP-8 Package
- Fully Specified at +5 V Supplies

#### Applications

- Motor Control
- Portable / Battery-powered Applications
- PCMCIA, USB
- Mobile Communications, Cellular Phones, Pagers
- Notebooks and PDAs
- Sensor Interface
- A/D Buffer
- Active Filters
- Signal Conditioning
- Portable Test Instruments

#### Description

The FAN4174 (single) and FAN4274 (dual) are voltage feedback amplifiers with CMOS inputs that consume only 200  $\mu$ A of supply current per amplifier, while providing  $\pm 33$  mA of output short-circuit current. These amplifiers are designed to operate 5 V supplies. The common mode voltage range extends beyond the negative and positive rails.

The FAN4174 and FAN4274 are designed on a CMOS process and provide 3.7 MHz of bandwidth and 3 V /  $\mu$ s of slew rate at a supply voltage of 5 V.

These amplifiers operate and are reliable over a wide temperature range of  $-40^{\circ}\text{C}$  to  $+125^{\circ}\text{C}$ .

The combination of extended temperature operation, low power, rail-to-rail performance, low-voltage operation, and a tiny package optimize this amplifier family for use in many industrial, general-purpose, and battery-powered applications.

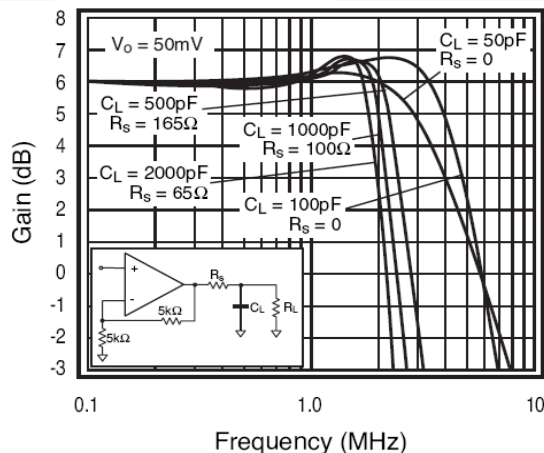


Figure 1. Frequency vs. Gain

#### Ordering Information

| Part Number  | Operating Temperature Range     | Package                             | Packing Method       |
|--------------|---------------------------------|-------------------------------------|----------------------|
| FAN4174IS5X  | $-40$ to $+125^{\circ}\text{C}$ | 5-Lead SOT23 Package                | Tape and Reel (3000) |
| FAN4274IMU8X | $-40$ to $+125^{\circ}\text{C}$ | 8-Lead Molded Small-Outline Package | Tape and Reel (3000) |

## Typical Application

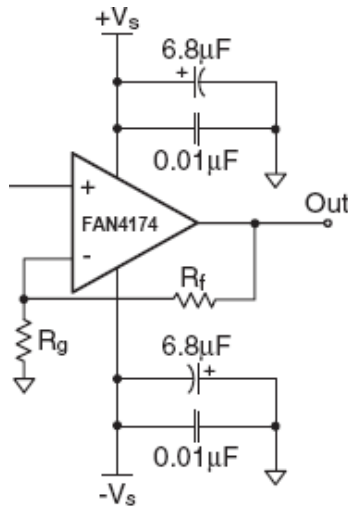


Figure 2. Typical Application Circuit

## Pin Configurations

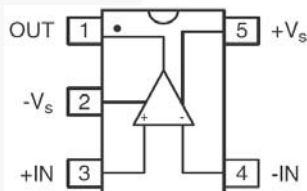


Figure 3. FAN4174 SOT23

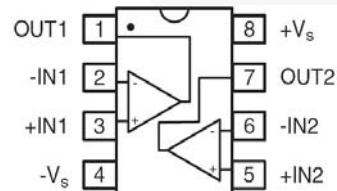


Figure 4. FAN4274 MSOP

## FAN4174 Pin Assignments

| Pin # | Name | Description     |
|-------|------|-----------------|
| 1     | OUT  | Output          |
| 2     | -Vs  | Negative Supply |
| 3     | +IN  | Positive Supply |
| 4     | -IN  | Negative Input  |
| 5     | +Vs  | Positive Supply |

## FAN4274 Pin Assignments

| Pin # | Name | Description               |
|-------|------|---------------------------|
| 1     | OUT1 | Output, Channel 1         |
| 2     | -IN1 | Negative Input, Channel 1 |
| 3     | +IN1 | Positive Input, Channel 1 |
| 4     | -Vs  | Negative Supply           |
| 5     | +IN2 | Positive Input, Channel 2 |
| 6     | -IN2 | Negative Input, Channel 2 |
| 7     | OUT2 | Output, Channel 2         |
| 8     | +Vs  | Positive Supply           |

## Absolute Maximum Ratings

Stresses exceeding the absolute maximum ratings may damage the device. The device may not function or be operable above the recommended operating conditions and stressing the parts to these levels is not recommended. In addition, extended exposure to stresses above the recommended operating conditions may affect device reliability. The absolute maximum ratings are stress ratings only. Functional operation under any of these conditions is NOT implied. Performance and reliability are guaranteed only if operating conditions are not exceeded.

| Symbol        | Parameter                         | Min.         | Max.       | Unit |
|---------------|-----------------------------------|--------------|------------|------|
| $V_{CC}$      | Supply Voltage                    | 0            | 6          | V    |
| $V_{IN}$      | Input Voltage Range               | $-V_S-0.5$   | $+V_S+0.5$ | V    |
| $T_J$         | Junction Temperature              |              | +150       | °C   |
| $T_{STG}$     | Storage Temperature               | -65          | +150       | °C   |
| $T_L$         | Lead Soldering, 10 Seconds        |              | +300       | °C   |
| $\Theta_{JA}$ | Thermal Resistance <sup>(1)</sup> | 5-Lead SOT23 | 256        | °C/W |
|               |                                   | 8-Lead MSOP  | 206        |      |

### Note:

1. Package thermal resistance JEDEC standard, multi-layer test boards, still air.

## Recommended Operating Conditions

The Recommended Operating Conditions table defines the conditions for actual device operation. Recommended operating conditions are specified to ensure optimal performance to the datasheet specifications. Fairchild does not recommend exceeding them or designing to Absolute Maximum Ratings.

| Symbol | Parameter                   | Min. | Max. | Unit |
|--------|-----------------------------|------|------|------|
| $+V_S$ | Supply Voltage              | 2.30 | 5.25 | V    |
| $T_A$  | Operating Temperature Range | -40  | +125 | °C   |

## Electrical Specifications at +2.7 V

$V_S=+2.7\text{ V}$ ,  $G=2$ ,  $R_L=10\text{ k}\Omega$  to  $V_S/2$ ,  $R_F=5\text{ k}\Omega$ ; unless otherwise noted.

| Symbol                               | Parameter                                   | Conditions                           | Min.                                    | Typ.         | Max. | Units                        |
|--------------------------------------|---|--------------------------------------|---|--------------|------|------------------------------|
| <b>Frequency Domain Response</b>     |   |                                      |   |              |      |                              |
| UGBW                                 | -3 dB Bandwidth                             | $G=+1$                               |   | 4.0          |      | MHz                          |
| $BW_{SS}$                            |   |                                      |   | 2.5          |      | MHz                          |
| GBWP                                 | Gain Bandwidth Product                      |                                      |   | 4            |      | MHz                          |
| <b>Time Domain Response</b>          |   |                                      |   |              |      |                              |
| $t_R, f_F$                           | Rise and Fall Time                          | $V_O=1.0\text{ V Step}$              |   | 300          |      | ns                           |
| OS                                   | Overshoot                                   | $V_O=1.0\text{ V Step}$              |   | 5            |      | %                            |
| SR                                   | Slew Rate                                   | $V_O=3\text{ V Step, } G=-1$         |   | 3            |      | V/ $\mu$ s                   |
| <b>Distortion and Noise Response</b> |   |                                      |   |              |      |                              |
| HD2                                  | 2nd Harmonic Distortion                     | $V_O=1\text{ V}_{PP}, 10\text{ kHz}$ |   | -66          |      | dBc                          |
| HD3                                  | 3rd Harmonic Distortion                     | $V_O=1\text{ V}_{PP}, 10\text{ kHz}$ |   | -67          |      | dBc                          |
| THD                                  | Total Harmonic Distortion                   | $V_O=1\text{ V}_{PP}, 10\text{ kHz}$ |   | 0.1          |      | %                            |
| $e_n$                                | Input Voltage Noise                         |                                      |   | 26           |      | nV/ $\sqrt{\text{Hz}}$       |
| $X_{TALK}$                           | Crosstalk (FAN4274)                         | 100 kHz                              |   | -100         |      | dB                           |
| <b>DC Performance</b>                |   |                                      |   |              |      |                              |
| $V_{IO}$                             | Input Offset Voltage <sup>(2)</sup>         |                                      | -6                                      | 0            | +6   | mV                           |
| $dV_{IO}$                            | Average Drift                               |                                      |   | 2.1          |      | $\mu\text{V}/^\circ\text{C}$ |
| $I_{bn}$                             | Input Bias Current                          |                                      |   | 5            |      | pA                           |
| PSRR                                 | Power Supply Rejection Ratio <sup>(2)</sup> | DC                                   | 50                                      | 73           |      | dB                           |
| $A_{OL}$                             | Open-loop Gain                              | DC                                   |   | 98           |      | dB                           |
| $I_S$                                | Supply Current per Amplifier <sup>(2)</sup> |                                      |   | 200          | 300  | $\mu\text{A}$                |
| <b>Input Characteristics</b>         |   |                                      |   |              |      |                              |
| $R_{IN}$                             | Input Resistance                            |                                      |   | 10           |      | G $\Omega$                   |
| $C_{IN}$                             | Input Capacitance                           |                                      |   | 1.4          |      | pF                           |
| CMIR                                 | Input Common Mode Voltage Range             |                                      |   | -0.3 to 2.8  |      | V                            |
| CMRR                                 | Common Mode Rejection Ratio <sup>(2)</sup>  | FAN4174                              | DC, $V_{CM}=0\text{ V to }2.2\text{ V}$ | 50           | 65   | dB                           |
|                                      |   | FAN4274                              | DC, $V_{CM}=0\text{ V to }2.2\text{ V}$ | 50           | 65   |                              |
| <b>Output Characteristics</b>        |   |                                      |   |              |      |                              |
| $V_O$                                | Output Voltage Swing <sup>(2)</sup>         | $R_L=10\text{ k}\Omega$ to $V_S/2$   | 0.03                                    | 0.01 to 2.69 | 2.65 | V                            |
|                                      |   | $R_L=1\text{ k}\Omega$ to $V_S/2$    |   | 0.05 to 2.55 |      |                              |
| $I_{SC}$                             | Short-Circuit Output Current                |                                      |   | +34/-12      |      | mA                           |
| $V_S$                                | Power Supply Operating Range                |                                      |   | 2.5 to 5.5   |      | V                            |

**Note:**

2. 100% tested at 25°C.

## Electrical Specifications at +5 V

$V_S=+5\text{ V}$ ,  $G=2$ ,  $R_L=10\text{ k}\Omega$  to  $V_S/2$ ,  $R_F=5\text{ k}\Omega$ ; unless otherwise noted.

| Symbol                               | Parameter                                   | Conditions                         | Min. | Typ.         | Max. | Units                        |
|--------------------------------------|---|------------------------------------|------|--------------|------|------------------------------|
| <b>Frequency Domain Response</b>     |   |                                    |      |              |      |                              |
| UGBW                                 | -3dB Bandwidth                              | $G=+1$ , $T_A=85^\circ\text{C}$    |      | 3.7          |      | MHz                          |
|                                      |   | $G=+1$ , $T_A=125^\circ\text{C}$   |      | 3.2          |      |                              |
| $BW_{SS}$                            |   |                                    |      | 2.3          |      | MHz                          |
| GBWP                                 | Gain Bandwidth Product                      | $T_A=85^\circ\text{C}$             |      | 3.7          |      | MHz                          |
|                                      |   | $T_A=125^\circ\text{C}$            |      | 3.2          |      |                              |
| <b>Time Domain Response</b>          |   |                                    |      |              |      |                              |
| $t_R, f_F$                           | Rise and Fall Time                          | $V_O=1.0\text{ V Step}$            |      | 300          |      | ns                           |
| OS                                   | Overshoot                                   | $V_O=1.0\text{ V Step}$            |      | 5            |      | %                            |
| SR                                   | Slew Rate                                   | $V_O=3\text{ V Step}$ , $G=-1$     |      | 3            |      | V/ $\mu\text{s}$             |
| <b>Distortion and Noise Response</b> |   |                                    |      |              |      |                              |
| HD2                                  | 2nd Harmonic Distortion                     | $V_O=1\text{ V}_{PP}$ , 10 kHz     |      | -80          |      | dBc                          |
| HD3                                  | 3rd Harmonic Distortion                     | $V_O=1\text{ V}_{PP}$ , 10 kHz     |      | -80          |      | dBc                          |
| THD                                  | Total Harmonic Distortion                   | $V_O=1\text{ V}_{PP}$ , 10 kHz     |      | 0.02         |      | %                            |
| $e_n$                                | Input Voltage Noise                         |                                    |      | 25           |      | nV/ $\sqrt{\text{Hz}}$       |
| $X_{TALK}$                           | Crosstalk (FAN4274)                         | 100 kHz                            |      | -100         |      | dB                           |
| <b>DC Performance</b>                |   |                                    |      |              |      |                              |
| $V_{IO}$                             | Input Offset Voltage <sup>(3)</sup>         |                                    | -8   | 0            | +8   | mV                           |
| $dV_{IO}$                            | Average Drift                               |                                    |      | 2.9          |      | $\mu\text{V}/^\circ\text{C}$ |
| $I_{bn}$                             | Input Bias Current                          |                                    |      | 5            |      | pA                           |
| PSRR                                 | Power Supply Rejection Ratio <sup>(3)</sup> | DC                                 | 50   | 73           |      | dB                           |
| $A_{OL}$                             | Open-loop Gain                              | DC                                 |      | 102          |      | dB                           |
| $I_S$                                | Supply Current per Amplifier <sup>(3)</sup> |                                    |      | 200          | 300  | $\mu\text{A}$                |
| <b>Input Characteristics</b>         |   |                                    |      |              |      |                              |
| $R_{IN}$                             | Input Resistance                            |                                    |      | 10           |      | G $\Omega$                   |
| $C_{IN}$                             | Input Capacitance                           |                                    |      | 1.2          |      | pF                           |
| CMIR                                 | Input Common Mode Voltage Range             |                                    |      | -0.3 to 5.1  |      | V                            |
| CMRR                                 | Common Mode Rejection Ratio <sup>(3)</sup>  | DC, $V_{CM}=0\text{ V}$ to $V_S$   | 58   | 73           |      | dB                           |
| <b>Output Characteristics</b>        |   |                                    |      |              |      |                              |
| $V_O$                                | Output Voltage Swing <sup>(3)</sup>         | $R_L=10\text{ k}\Omega$ to $V_S/2$ | 0.03 | 0.01 to 4.99 | 4.95 | V                            |
|                                      |   | $R_L=1\text{ k}\Omega$ to $V_S/2$  |      | 0.1 to 4.9   |      |                              |
| $I_{SC}$                             | Short-Circuit Output Current                |                                    |      | $\pm 33$     |      | mA                           |
| $V_S$                                | Power Supply Operating Range                |                                    |      | 2.5 to 5.5   |      | V                            |

**Note:**

3. 100% tested at 25°C.

## Typical Performance Characteristics

$V_S = +2.7\text{ V}$ ,  $G = 2$ ,  $R_L = 10\text{ k}\Omega$  to  $V_S/2$ ,  $R_F = 5\text{ k}\Omega$ ; unless otherwise noted.

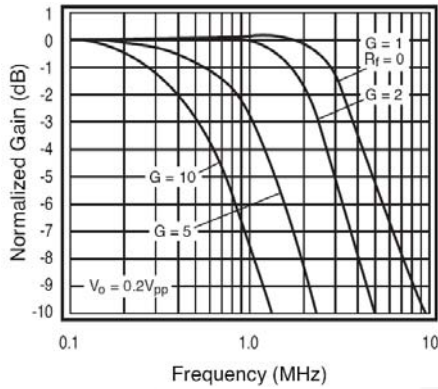


Figure 5. Non-Inverting Frequency Response (+5 V)

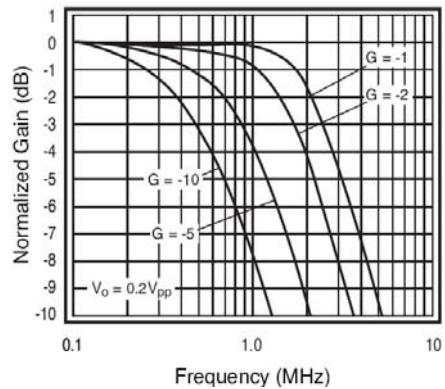


Figure 6. Inverting Frequency Response (+5 V)

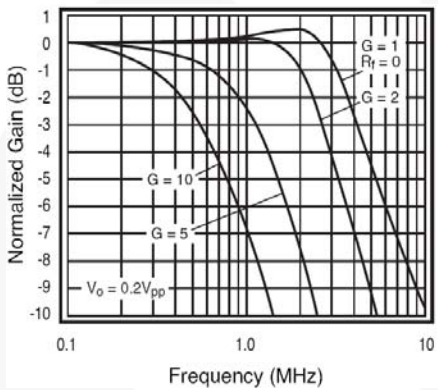


Figure 7. Non-Inverting Frequency Response

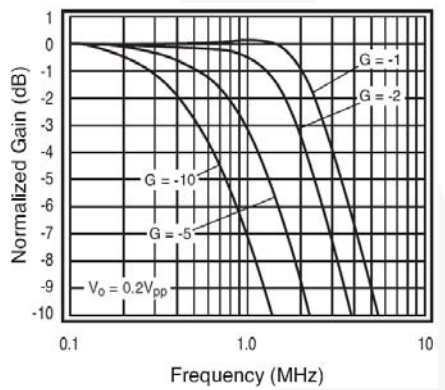


Figure 8. Inverting Frequency Response

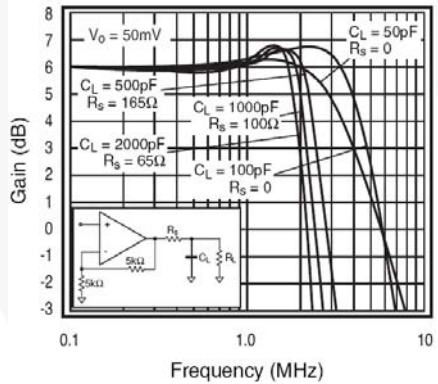


Figure 9. Frequency Response vs.  $C_L$

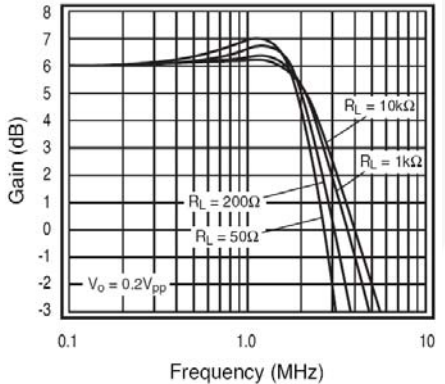


Figure 10. Frequency Response vs.  $R_L$

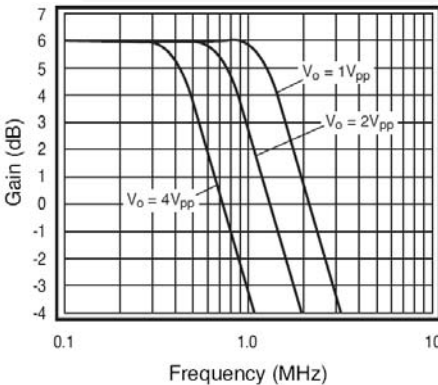


Figure 11. Large Signal Frequency Response (+5 V)

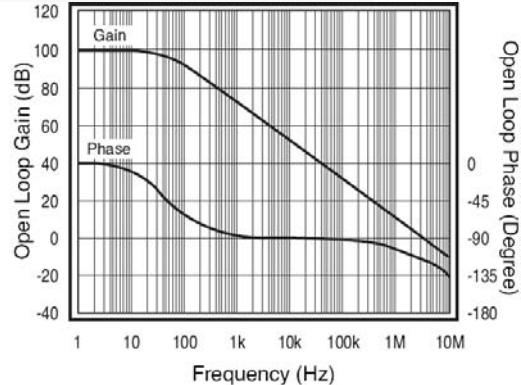
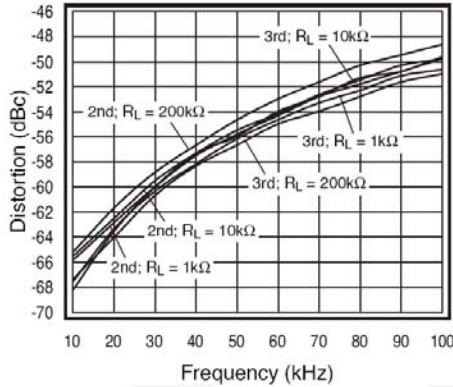


Figure 12. Open-loop Gain and Phase vs. Frequency

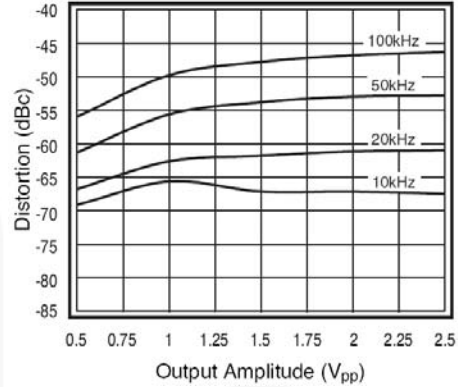


## Typical Performance Characteristic

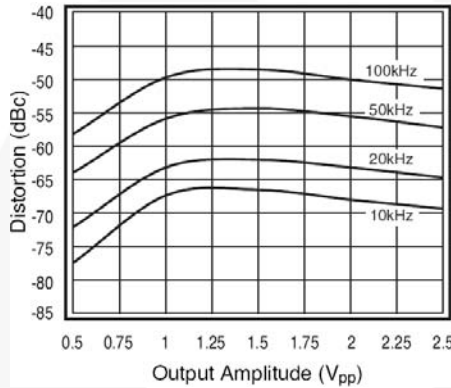
$V_S=+2.7\text{ V}$ ,  $G=2$ ,  $R_L=10\text{ k}\Omega$  to  $V_S/2$ ,  $R_F=5\text{ k}\Omega$ ; unless otherwise noted.



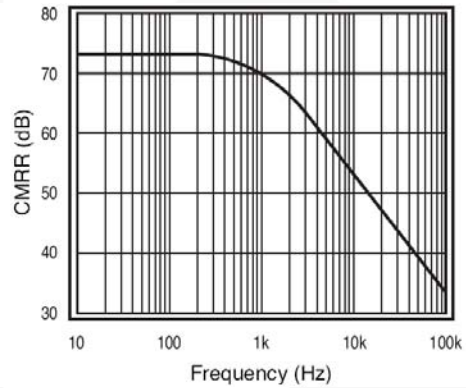
**Figure 13. 2nd and 3rd Harmonic Distortion**



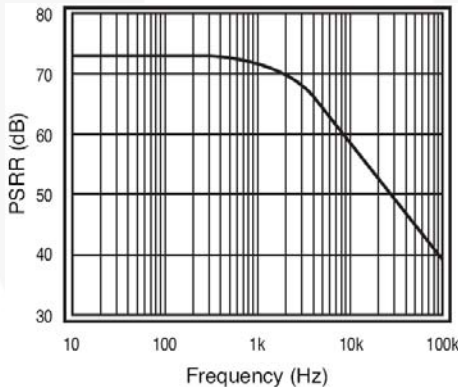
**Figure 14. 2nd Harmonic Distortion vs.  $V_O$**



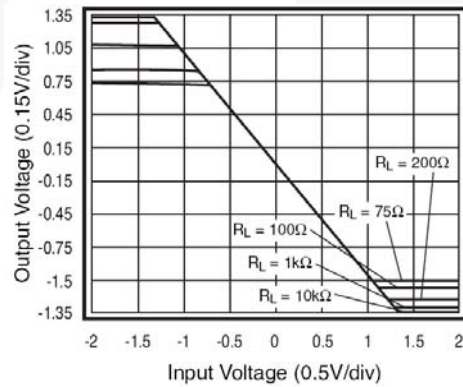
**Figure 15. 3rd Harmonic Distortion vs.  $V_O$**



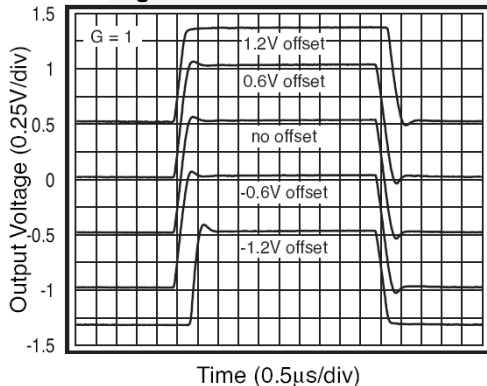
**Figure 16. CMRR  $V_S=5\text{ V}$**



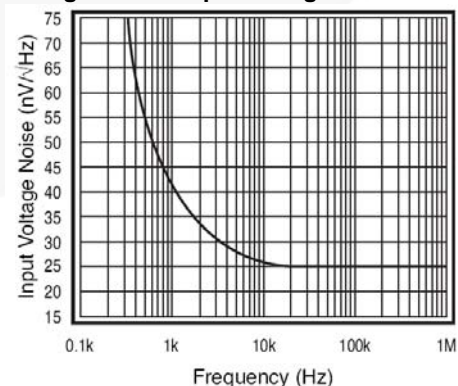
**Figure 17. PSRR  $V_S=5\text{ V}$**



**Figure 18. Output Swing vs. Load**



**Figure 19. Pulse Response vs. Common-Mode Voltage**



**Figure 20. Input Voltage Noise**

## Application Information

### General Description

The FAN4174 amplifier includes single-supply, general-purpose, voltage-feedback amplifiers, fabricated on a bi-CMOS process. The family features a rail-to-rail input and output and is unity gain stable. The typical non-inverting circuit schematic is shown in Figure 21.

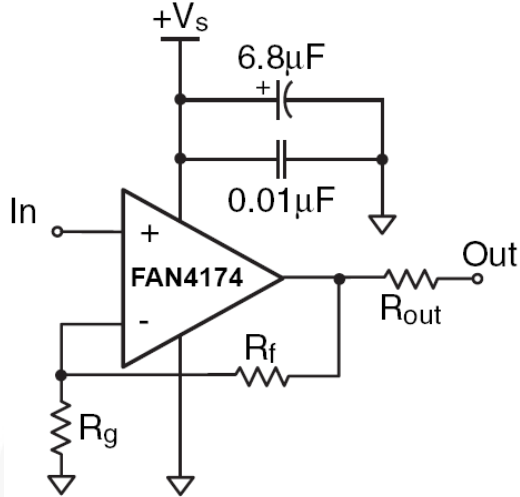


Figure 21. Typical Non-inverting Configuration

### Input Common Mode Voltage

The common mode input range extends to 300 mV below ground and to 100 mV above  $V_S$  in single supply operation. Exceeding these values does not cause phase reversal; however, if the input voltage exceeds the rails by more than 0.5 V, the input ESD devices begin to conduct. The output stays at the rail during this overdrive condition. If the absolute maximum input  $V_{IN}$  (700 mV beyond either rail) is exceeded, externally limit the input current to  $\pm 5$  mA, as shown in Figure 22.

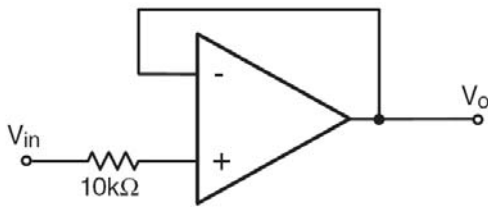


Figure 22. Circuit for Input Current Protection

### Power Dissipation

The maximum internal power dissipation allowed is directly related to the maximum junction temperature. If the maximum junction temperature exceeds 150°C, performance degradation occurs. If the maximum junction temperature exceeds 150°C for an extended time, device failure may occur.

### Overdrive Recovery

Overdrive of an amplifier occurs when the output and/or input ranges are exceeded. The recovery time varies based on whether the input or output is overdriven and by how much the range is exceeded. The FAN4174 typically recovers in less than 500 ns from an overdrive condition. Figure 23 shows the FAN4174 amplifier in an overdriven condition.

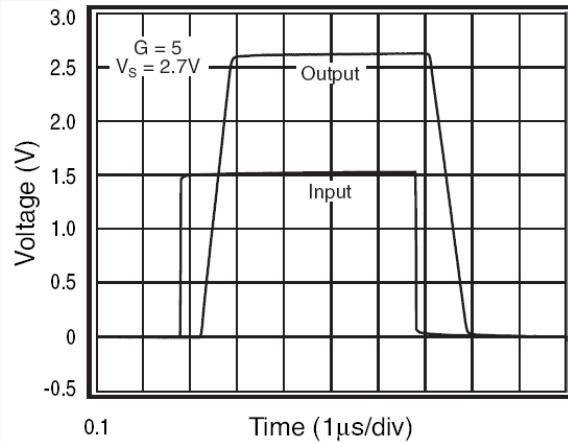


Figure 23. Overdrive Recovery

### Driving Capacitive Loads

Figure 9 illustrates the response of the FAN4174 amplifier. A small series resistance ( $R_S$ ) at the output of the amplifier, illustrated in Figure 24, improves stability and settling performance.  $R_S$  values in Figure 9 achieve maximum bandwidth with less than 2 dB of peaking. For maximum flatness, use a larger  $R_S$ . Capacitive loads larger than 500 pF require the use of  $R_S$ .

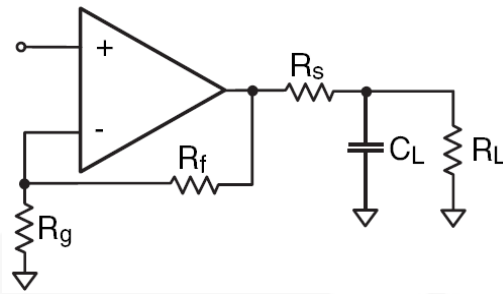


Figure 24. Typical Topology for Driving a Capacitive Load

Driving a capacitive load introduces phase-lag into the output signal, which reduces phase margin in the amplifier. The unity gain follower is the most sensitive configuration. In a unity gain follower configuration, the FAN4174 amplifier requires a 300  $\Omega$  series resistor to drive a 100 pF load.



## Layout Considerations

General layout and supply bypassing play major roles in high-frequency performance. Fairchild evaluation boards help guide high-frequency layout and aid in device testing and characterization. Follow the steps below as a basis for high-frequency layout:

1. Include 6.8  $\mu\text{F}$  and 0.01  $\mu\text{F}$  ceramic capacitors.
2. Place the 6.8  $\mu\text{F}$  capacitor within 19.05 mm (0.75 inches) of the power pin.
3. Place the 0.01  $\mu\text{F}$  capacitor within 2.54 mm (0.1 inches) of the power pin.
4. Remove the ground plane under and around the part, especially near the input and output pins, to reduce parasitic capacitance.

Minimize all trace lengths to reduce series inductances.

Refer to the evaluation board layouts shown in Figure 27 through Figure 30 for more information.

When evaluating only one channel, complete the following on the unused channel:

1. Ground the non-inverting input.
2. Short the output to the inverting input.

## Evaluation Board Information

The following evaluation boards are available to aid in the testing and layout of this device:

| Board  | Description                                     | Product      |
|--------|---|--------------|
| KEB002 | Single Channel, Dual Supply, 5 and 6-Lead SOT23 | FAN4174IS5X  |
| KEB010 | Dual Channel, Dual Supply 8-Lead MSOP           | FAN4274IMU8X |

Evaluation board schematics are shown in Figure 25 and Figure 26; layouts are shown in Figure 27 through Figure 30.

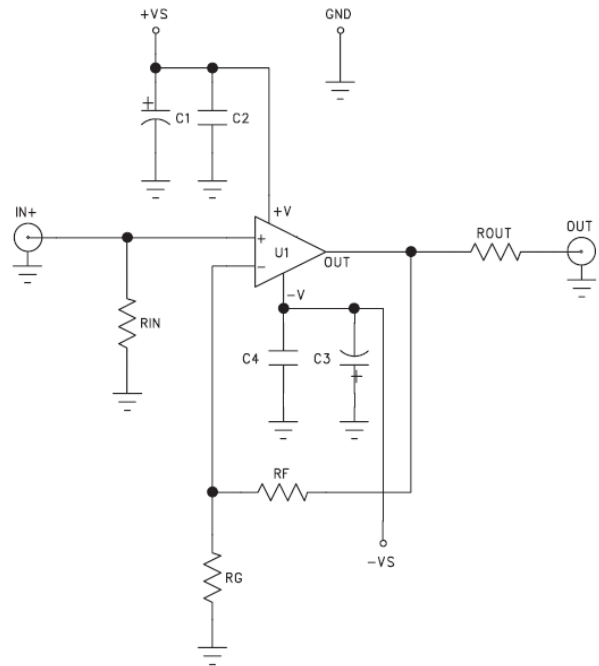


Figure 25. FAN4174 Evaluation Board Schematic (KEV002)

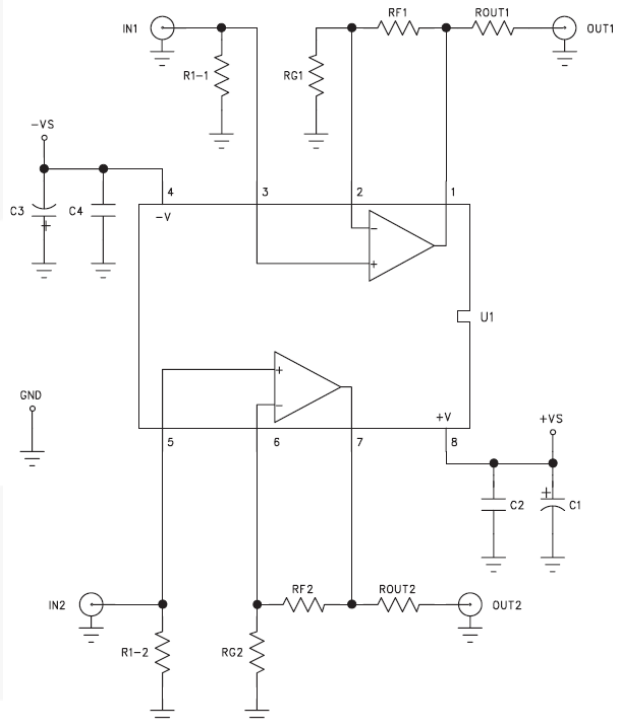


Figure 26. FAN4274 Evaluation Board Schematic (KEB010)

Board Layout Information

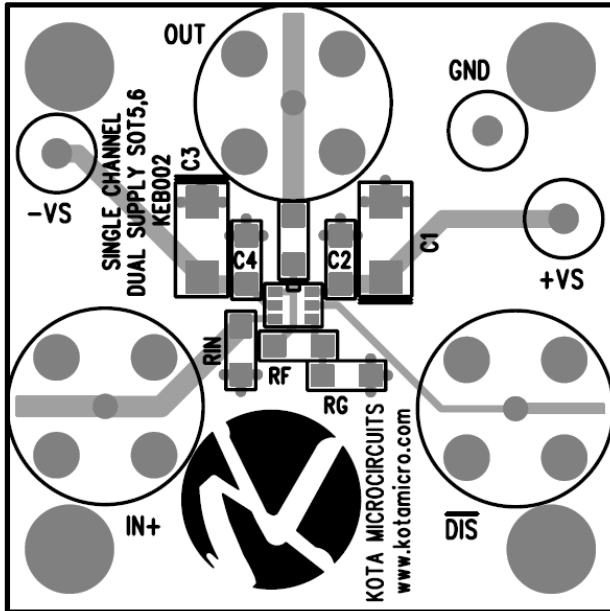


Figure 27. KEB002 (Top Side)

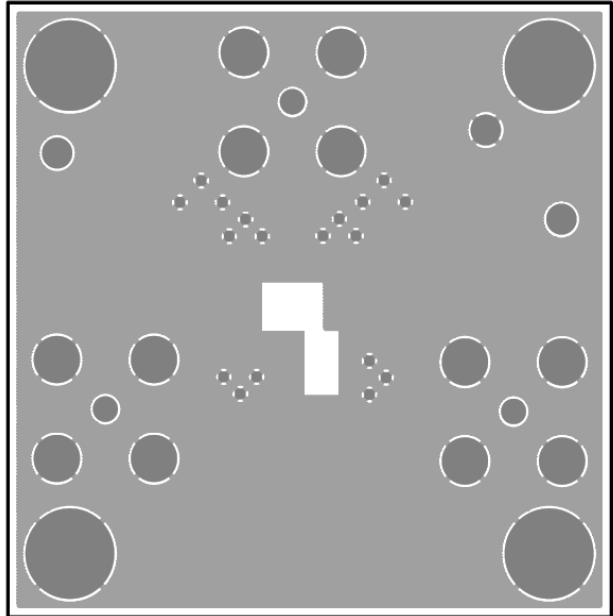


Figure 28. KEB002 (Bottom Side)

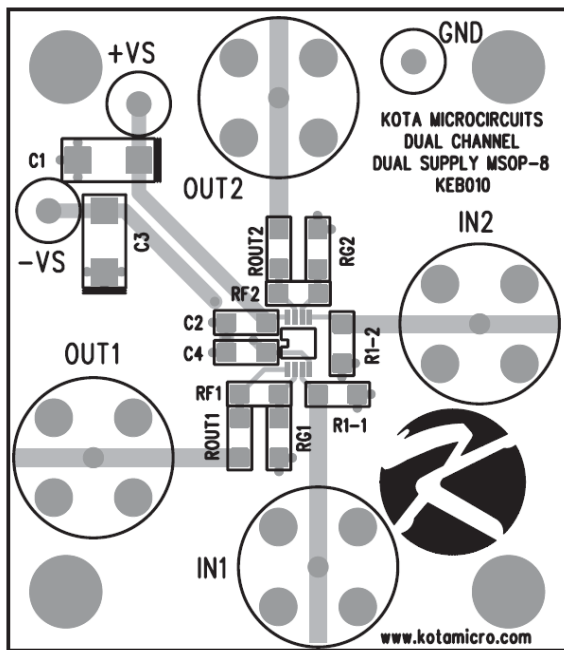


Figure 29. KEB010 (Top Side)

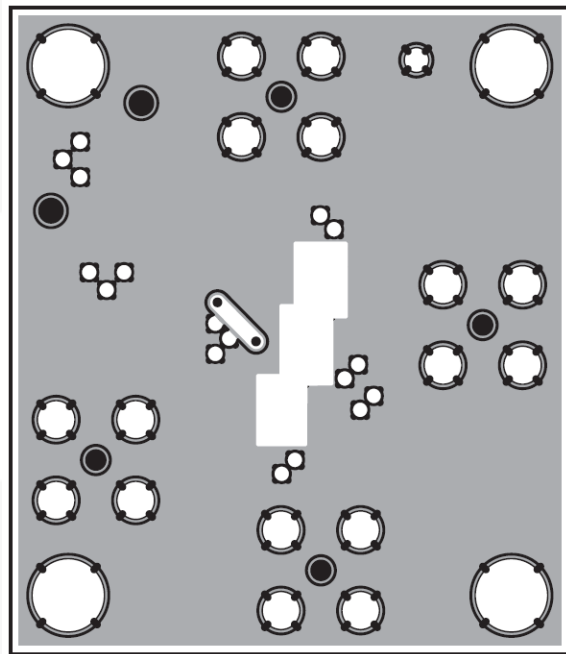
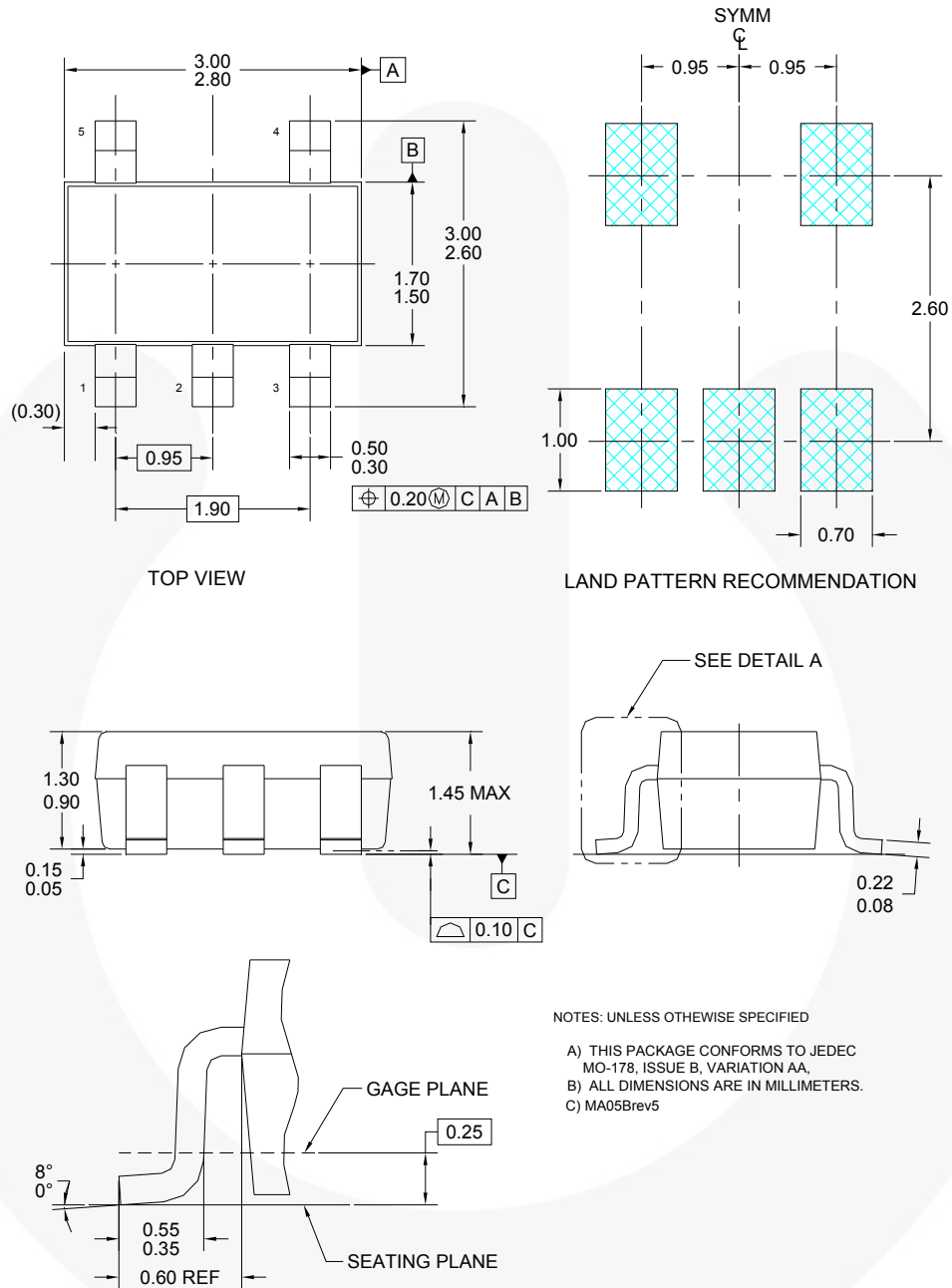


Figure 30. KEB010 (Bottom Side)

### Physical Dimensions

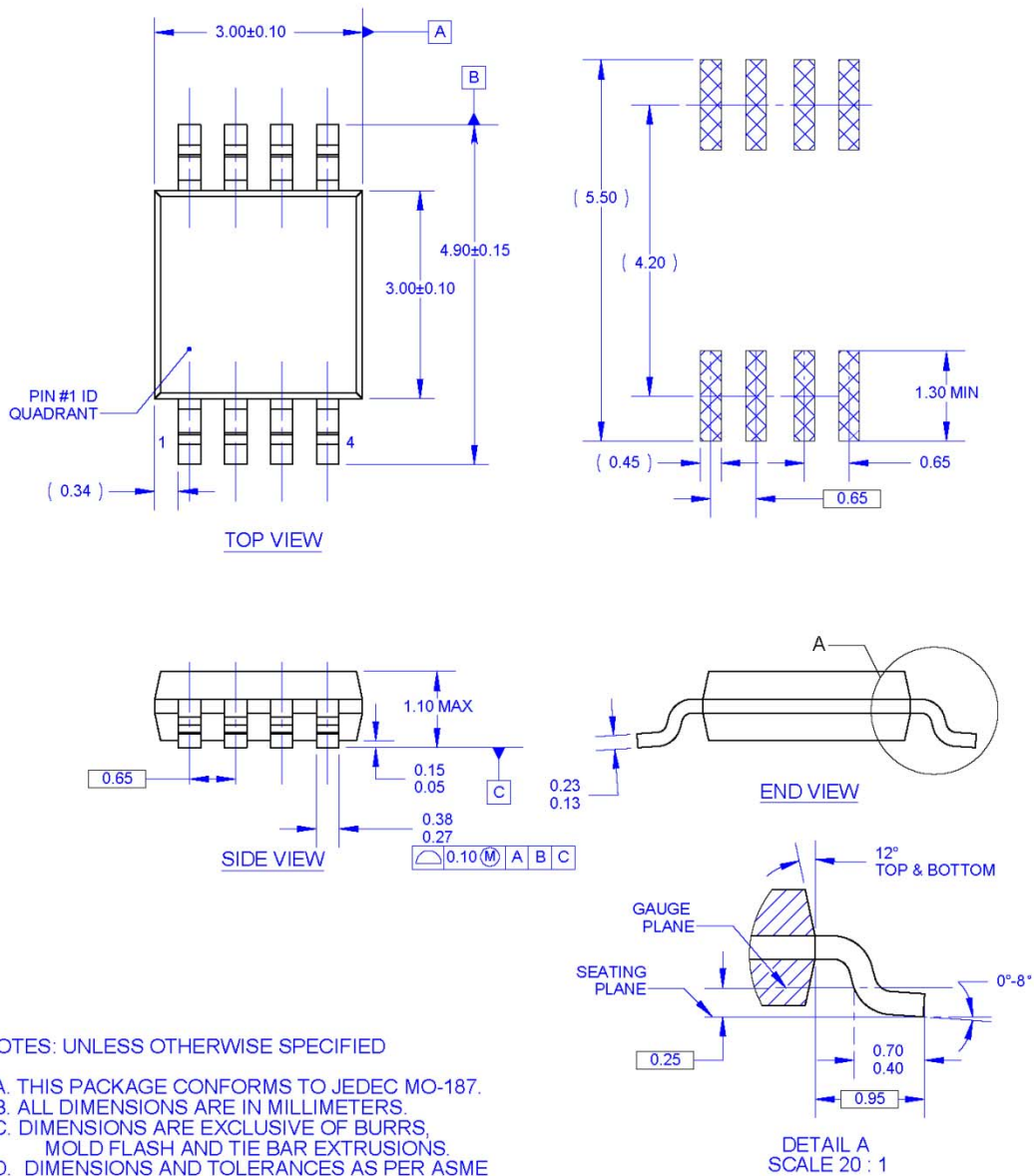


**Figure 31. 5-Lead SOT-23 Package**

Package drawings are provided as a service to customers considering Fairchild components. Drawings may change in any manner without notice. Please note the revision and/or date on the drawing and contact a Fairchild Semiconductor representative to verify or obtain the most recent revision. Package specifications do not expand the terms of Fairchild's worldwide terms and conditions, specifically the warranty therein, which covers Fairchild products.

Always visit Fairchild Semiconductor's online packaging area for the most recent package drawings:  
<http://www.fairchildsemi.com/packaging/>.

## Physical Dimensions



**Figure 32. 8-Lead Molded Small Outline Package (MSOP)**






Package drawings are provided as a service to customers considering Fairchild components. Drawings may change in any manner without notice. Please note the revision and/or date on the drawing and contact a Fairchild Semiconductor representative to verify or obtain the most recent revision. Package specifications do not expand the terms of Fairchild's worldwide terms and conditions, specifically the warranty therein, which covers Fairchild products.

Always visit Fairchild Semiconductor's online packaging area for the most recent package drawings:  
<http://www.fairchildsemi.com/packaging/>.



**TRADEMARKS**

The following includes registered and unregistered trademarks and service marks, owned by Fairchild Semiconductor and/or its global subsidiaries, and is not intended to be an exhaustive list of all such trademarks.

- |   |  |   |   |
|---|--|---|---|
| 2Cool™  | FPS™   |  | Sync-Lock™  |
| AccuPower™  | F-PFS™   | PowerTrench®  |  SYSTEM GENERAL® |
| AX-CAP®*  | FRFET®   | PowerXS™  | TinyBoost™  |
| BitSiC™   | Global Power Resource™                         | Programmable Active Droop™  | TinyBuck™   |
| Build it Now™   | GreenBridge™                                   | QFET®   | TinyCalc™   |
| CorePLUS™   | Green FPS™                                     | QS™   | TinyLogic®  |
| CorePOWER™  | Green FPS™ e-Series™                           | Quiet Series™   | TINYOPTO™   |
| CROSSVOLT™  | Gmax™  | RapidConfigure™   | TinyPower™  |
| CTL™  | GTO™   |  | TinyPWM™  |
| Current Transfer Logic™   | IntelliMAX™                                    | Saving our world, 1mW/W/kW at a time™   | TinyWire™   |
| DEUXPEED®   | ISOPLANAR™                                     | SignalWise™   | TransiC™  |
| Dual Cool™  | Making Small Speakers Sound Louder and Better™ | SmartMax™   | TriFault Detect™  |
| EcoSPARK®   | MegaBuck™                                      | SMART START™  | TRUECURRENT®*   |
| EfficientMax™   | MICROCOUPLER™                                  | Solutions for Your Success™   | µSerDes™  |
| ESBC™   | MicroFET™                                      | SPM®  |  SerDes®         |
|  | MicroPak™                                      | STEALTH™  | UHC®  |
| Fairchild®  | MicroPak2™                                     | SuperFET®   | Ultra FRFET™  |
| Fairchild Semiconductor®  | MillerDrive™                                   | SuperSOT™-3   | UniFET™   |
| FACT Quiet Series™  | MotionMax™                                     | SuperSOT™-6   | VCX™  |
| FACT®   | mWSaver™                                       | SuperSOT™-8   | VisualMax™  |
| FAST®   | OptoHiT™                                       | SupreMOS®   | VoltagePlus™  |
| FastvCore™  | OPTOLOGIC®                                     | SyncFET™  | XS™   |
| FETBench™   | OPTOPLANAR®                                    |   |   |

\* Trademarks of System General Corporation, used under license by Fairchild Semiconductor.

**DISCLAIMER**

FAIRCHILD SEMICONDUCTOR RESERVES THE RIGHT TO MAKE CHANGES WITHOUT FURTHER NOTICE TO ANY PRODUCTS HEREIN TO IMPROVE RELIABILITY, FUNCTION, OR DESIGN. FAIRCHILD DOES NOT ASSUME ANY LIABILITY ARISING OUT OF THE APPLICATION OR USE OF ANY PRODUCT OR CIRCUIT DESCRIBED HEREIN; NEITHER DOES IT CONVEY ANY LICENSE UNDER ITS PATENT RIGHTS, NOR THE RIGHTS OF OTHERS. THESE SPECIFICATIONS DO NOT EXPAND THE TERMS OF FAIRCHILD'S WORLDWIDE TERMS AND CONDITIONS, SPECIFICALLY THE WARRANTY THEREIN, WHICH COVERS THESE PRODUCTS.

**LIFE SUPPORT POLICY**

FAIRCHILD'S PRODUCTS ARE NOT AUTHORIZED FOR USE AS CRITICAL COMPONENTS IN LIFE SUPPORT DEVICES OR SYSTEMS WITHOUT THE EXPRESS WRITTEN APPROVAL OF FAIRCHILD SEMICONDUCTOR CORPORATION.

As used herein:

- Life support devices or systems are devices or systems which, (a) are intended for surgical implant into the body or (b) support or sustain life, and (c) whose failure to perform when properly used in accordance with instructions for use provided in the labeling, can be reasonably expected to result in a significant injury of the user.
- A critical component in any component of a life support, device, or system whose failure to perform can be reasonably expected to cause the failure of the life support device or system, or to affect its safety or effectiveness.

**ANTI-COUNTERFEITING POLICY**

Fairchild Semiconductor Corporation's Anti-Counterfeiting Policy. Fairchild's Anti-Counterfeiting Policy is also stated on our external website, [www.fairchildsemi.com](http://www.fairchildsemi.com), under Sales Support.

Counterfeiting of semiconductor parts is a growing problem in the industry. All manufacturers of semiconductor products are experiencing counterfeiting of their parts. Customers who inadvertently purchase counterfeit parts experience many problems such as loss of brand reputation, substandard performance, failed applications, and increased cost of production and manufacturing delays. Fairchild is taking strong measures to protect ourselves and our customers from the proliferation of counterfeit parts. Fairchild strongly encourages customers to purchase Fairchild parts either directly from Fairchild or from Authorized Fairchild Distributors who are listed by country on our web page cited above. Products customers buy either from Fairchild directly or from Authorized Fairchild Distributors are genuine parts, have full traceability, meet Fairchild's quality standards for handling and storage and provide access to Fairchild's full range of up-to-date technical and product information. Fairchild and our Authorized Distributors will stand behind all warranties and will appropriately address any warranty issues that may arise. Fairchild will not provide any warranty coverage or other assistance for parts bought from Unauthorized Sources. Fairchild is committed to combat this global problem and encourage our customers to do their part in stopping this practice by buying direct or from authorized distributors.

**PRODUCT STATUS DEFINITIONS**

**Definition of Terms**

| Datasheet Identification | Product Status        | Definition  |
|--------------------------|-----------------------|---|
| Advance Information      | Formative / In Design | Datasheet contains the design specifications for product development. Specifications may change in any manner without notice.   |
| Preliminary              | First Production      | Datasheet contains preliminary data; supplementary data will be published at a later date. Fairchild Semiconductor reserves the right to make changes at any time without notice to improve design. |
| No Identification Needed | Full Production       | Datasheet contains final specifications. Fairchild Semiconductor reserves the right to make changes at any time without notice to improve the design.   |
| Obsolete                 | Not In Production     | Datasheet contains specifications on a product that is discontinued by Fairchild Semiconductor. The datasheet is for reference information only.  |

Rev. 164