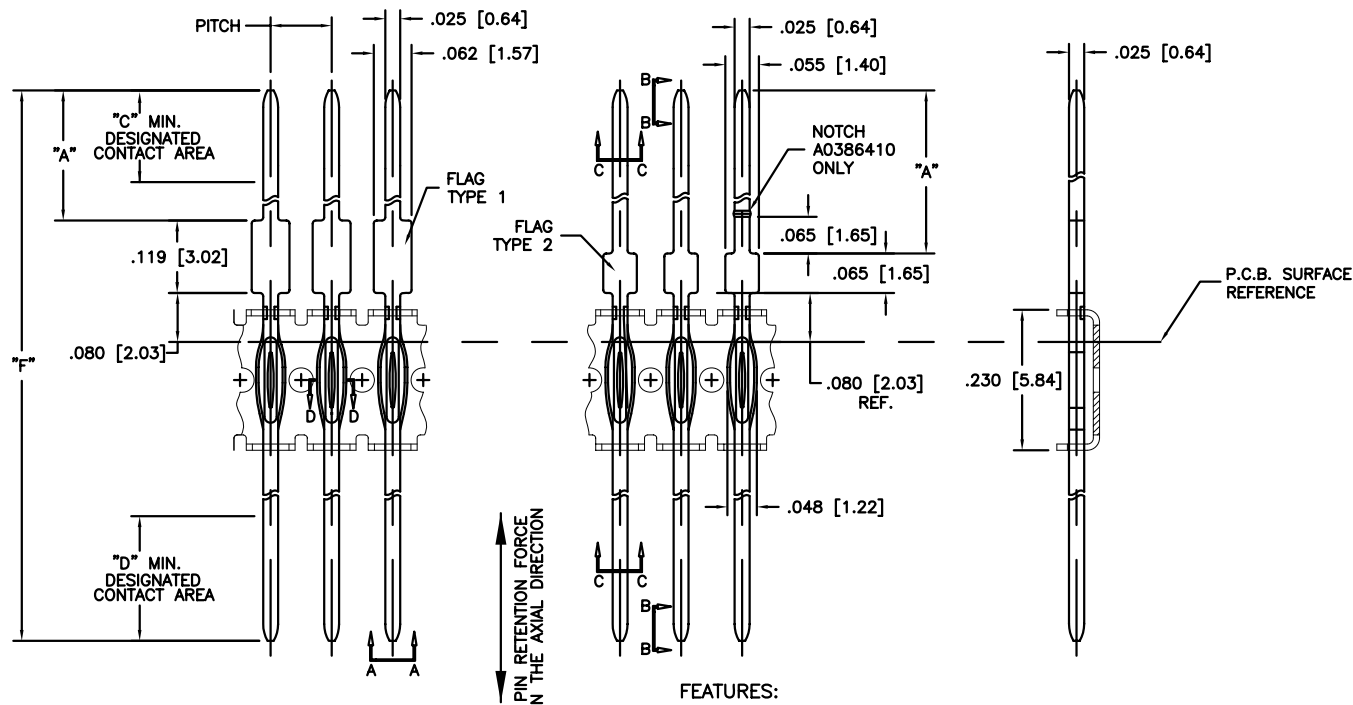


PRODUCT NUMBER  
SEE TABLE



#### OPTIONS:

- \* PIN LENGTHS
- \* BANDOLIER PITCH (.100" [2.54], .125" [3.18], .150" [3.81])
- \* GOLD, TIN-LEAD AND TIN PLATING LENGTHS
- \* GOLD THICKNESS
- \* COMPLIANT SECTION LOCATION IN THE BANDOLIER
- \* FLAG TYPE OPTIONS

#### SPECIFICATIONS—MECHANICAL:

- \* DURABILITY: 200 CYCLES
- \* PERPENDICULAR PUSH OUT FORCE: 3–5.5 LBS / PIN TYP.
- \* AXIAL PUSH OUT FORCE: NOT MOVE PRIOR TO 30 GRAMS
- \* OPERATING TEMPERATURE: –55°C TO +85°C

#### SPECIFICATIONS—ELECTRICAL:

- \* CURRENT RATING(CONTINUOUS): 2 AMP/CONTACT MAX

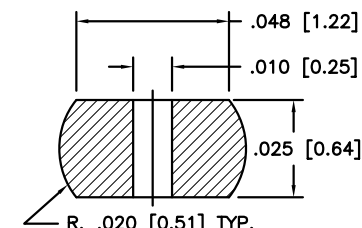
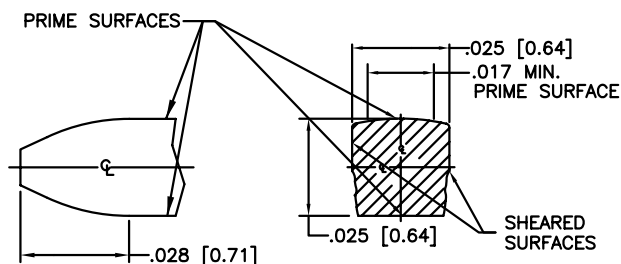
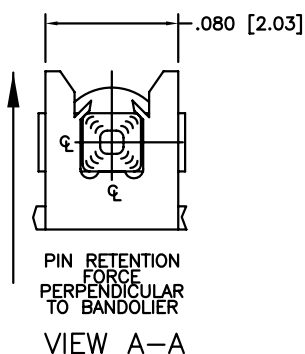
#### FEATURES:

- \* .025" [0.63mm] SQUARE PINS
- \* PRESS FIT COMPLIANT WITH PCB HOLE, FINISHED HOLE SIZE  $0.040+0.003/-0.002$  [ $1.016+0.07/-0.05$ ]
- \* SELECTIVE GOLD PLATING IN CONTACT AREA (2 SIDED)
- \* GOLD, TIN-LEAD OR TIN PLATING AT EITHER END
- \* PROGRESSIVE TAPER NOSE (4 SIDES) AT BOTH ENDS FOR SMOOTH ENGAGEMENT IN FEMALE CONTACT
- \* BANDOLIERED (.100" [2.54mm], .125" [3.18mm], .150" [3.81mm] PITCH) FOR BACKPANEL OR SHROUD
- \* TIN-LEAD OR TIN PLATING IN AREA WHERE MATING TO BOARD
- \* COMPLIANT SECTION DESIGNED FOR RETENTION IN .093" [2.36mm] THICK PCB TYPICALLY
- \* WITHSTANDS SOLDERLESS WRAP CONNECTIONS

mat'l. code SEE NOTE 1				surface	tolerance	projection	product family
lir	ecn no	dr	date	tolerances unless otherwise specified		INCH/MM	title
E	V06-0103	HTB	2/2/06	angles	linear		FREE STANDING PINS COMPLIANT BACKPANEL
F	V06-0354	HTB	4/17/06			scale N.T.S.	dwg no
				dr	T. BREWBAKER	2/2/06	sheet 1 of 5 size
				engr	T. BREWBAKER	2/2/06	A3
				chr	T. BREWBAKER	2/2/06	
				appd	T. BREWBAKER	2/2/06	
sheet	revision	F	F	F	F		type
index	sheet	1	2	3	4	5	Product Customer Drawing



PRODUCT NUMBER

SEE TABLE



## NOTES:

1. BANDOLIER MATERIAL: C26000  
PIN MATERIAL: C51000  
CONTACT AREA FINISH:  $30\mu$ " /  $0.76\mu$  Au  
CONTACT UNDERPLATE:  $50\mu$ " /  $1.27\mu$  Ni  
C-SECTION AREA FINISH:  $20-70\mu$ " /  $0.51-1.78\mu$  SnPb  
LF C-SECTION AREA FINISH:  $20-70\mu$ " /  $0.51-1.78\mu$  Sn  
WIRE WRAP TAIL FINISH:  $100-200\mu$ " /  $2.54-5.08\mu$  SnPb  
LF WIRE WRAP TAIL FINISH:  $100\mu$ " /  $2.54\mu$  Sn
2. PACKAGING: MEDITE/MASONITE REELS WITH PAPER INTERLEAVE  
RIGHT OR LEFT REELING OPTION (PER DRAWING 57399)
3. PART NUMBERS WITH AN LF SUFFIX MEET EUROPEAN  
UNION DIRECTIVES AND OTHER COUNTRY REGULATIONS  
AS DESCRIBED IN GS-22-008.
4. PART NUMBERS WITH AN LF SUFFIX HAVE 100% TIN PLATING  
IN THE INTERFACE AND HAVE NOT BEEN TESTED FOR WHISKER  
GROWTH IN ALL INTERCONNECT ENVIRONMENTS.

mat'l. code SEE NOTE 1				surface <input checked="" type="checkbox"/> tolerance		projection 		product family NORCON			
ltr	ecn no	dr	date	tolerances unless otherwise specified				title			
F				angles	linear	INCH/MM .006±.005/.006±.13		FREE STANDING PINS COMPLIANT BACKPANEL			
						scale N.T.S.					
				dr	T. BREWBAKER 2/2/06			dwg no		sheet 2 of 5	size
				engr	T. BREWBAKER 2/2/06			54366		A3	
				chr	T. BREWBAKER 2/2/06						
				appd	T. BREWBAKER 2/2/06						
sheet index		revision sheet						type Product Customer Drawing			

PRODUCT NUMBER	ENG. CODE	PIN ID	PITCH	FLAG TYPE	DIM "A"	DIM "C" PRIMARY SIDE	DIM "D" SECONDARY SIDE	DIM "F" PIN LENGTH	AVG. QTY. PER REEL
A0354258	NPS25230L3D	D I S C O N T I N U E D							
A0354259	NPS25230L4C	D I S C O N T I N U E D							
A0354260	NPS25230L5B	-13B	.150 [3.81]	2	.365 [9.27]	.200 [5.08] Au	.200 [5.08] Au	1.110 [28.19]	26,500
A0354260LF	-	-13B	.150 [3.81]	2	.365 [9.27]	.200 [5.08] Au	.200 [5.08] Au	1.110 [28.19]	26,500
A0354261	NPS25230L6D	D I S C O N T I N U E D							
A0354263	NPS25230L8B	D I S C O N T I N U E D							
A0354264	NPS25230L9D	D I S C O N T I N U E D							
A0354265	NPS25230L10C	D I S C O N T I N U E D							
A0354266	NPS25230L11B	D I S C O N T I N U E D							
A0354273	NPS25230L18D	-1D	.100 [2.54]	1	.263 [6.68]	.200 [5.08] Au	.200 [5.08] Au	1.235 [31.37]	40,000
A0354273LF	-	-1D	.100 [2.54]	1	.263 [6.68]	.200 [5.08] Au	.200 [5.08] Au	1.235 [31.37]	40,000
A0354274	NPS25230L19C	D I S C O N T I N U E D							
A0354274LF	-	D I S C O N T I N U E D							
A0354275	NPS25230L20B	D I S C O N T I N U E D							
A0354275LF	-	D I S C O N T I N U E D							
A0354276	NPS25230L21D	-2D	.100 [2.54]	1	.313 [7.95]	.250 [6.35] Au	.250 [6.35] Au	1.335 [33.90]	40,000
A0354276LF	-	-2D	.100 [2.54]	1	.313 [7.95]	.250 [6.35] Au	.250 [6.35] Au	1.335 [33.90]	40,000
A0354277	NPS25230L22C	D I S C O N T I N U E D							
A0354277LF	-	D I S C O N T I N U E D							
A0354278	NPS25230L23B	D I S C O N T I N U E D							
A0354278LF	-	D I S C O N T I N U E D							
A0354385	NPS25230L24D	-5D	.100 [2.54]	1	.263 [6.68]	.200 [5.08] Au	N/A SnPb	.880 [22.35]	40,000
A0354385LF	-	-5D	.100 [2.54]	1	.263 [6.68]	.200 [5.08] Au	N/A Sn	.880 [22.35]	40,000
A0354386	NPS25230L25D	-6D	.100 [2.54]	1	.313 [7.95]	.250 [6.35] Au	N/A SnPb	.930 [23.62]	40,000
A0354386LF	-	-6D	.100 [2.54]	1	.313 [7.95]	.250 [6.35] Au	N/A Sn	.930 [23.62]	40,000
A0367267	NPS25230L29C	-9C	.125 [3.18]	2	.365 [9.27]	.200 [5.08] Au	N/A SnPb	1.130 [28.70]	32,000
A0367267LF	-	-9C	.125 [3.18]	2	.365 [9.27]	.200 [5.08] Au	N/A Sn	1.130 [28.70]	32,000

LEGEND:  
Au: GOLD  
SnPb: TIN/LEAD  
Sn: TIN

mat'l. code SEE NOTE 1				surface <input checked="" type="checkbox"/> tolerance		projection		product family NORCON	
lfr	ecr no	dr	date	tolerances unless otherwise specified		INCH/MM		title	
F				angles	linear .0004-.005/.004-.13	scale N.T.S.		FREE STANDING PINS COMPLIANT BACKPANEL	
				dr	T. BREWBAKER 2/2/06			dwg no	
				engr	T. BREWBAKER 2/2/06			sheet 3 of 5	
				chr	T. BREWBAKER 2/2/06			size	
				appd	T. BREWBAKER 2/2/06			A3	
sheet	revision							type Product Customer Drawing	
index	sheet								

PRODUCT NUMBER	ENG. CODE	PIN ID	PITCH	FLAG TYPE	DIM "A"	DIM "C" PRIMARY SIDE	DIM "D" SECONDARY SIDE	DIM "F" PIN LENGTH	AVG. QTY. PER REEL
A0367268	NPS25230L30C	-9C	.125 [3.18]	2	.365 [9.27]	.200 [5.08] Au	.200 [5.08] Au	1.130 [28.70]	32,000
A0367268LF	-	-9C	.125 [3.18]	2	.365 [9.27]	.200 [5.08] Au	.200 [5.08] Au	1.130 [28.70]	32,000
A0367269	NPS25230L31C	-11C	.125 [3.18]	2	.465 [11.81]	.300 [7.62] Au	.200 [5.08] Au	1.230 [31.24]	32,000
A0367269LF	-	-11C	.125 [3.18]	2	.465 [11.81]	.300 [7.62] Au	.200 [5.08] Au	1.230 [31.24]	32,000
A0367271	NPS25230L32C	-7C	.125 [3.18]	2	.365 [9.27]	.200 [5.08] Au	N/A SnPb	.760 [19.30]	32,000
A0367271LF	-	-7C	.125 [3.18]	2	.365 [9.27]	.200 [5.08] Au	N/A Sn	.760 [19.30]	32,000
A0367835	NPS25230L33B	-7B	.150 [3.81]	2	.365 [9.27]	.200 [5.08] Au	N/A SnPb	.760 [19.30]	26,500
A0367835LF	-	-7B	.150 [3.81]	2	.365 [9.27]	.200 [5.08] Au	N/A Sn	.760 [19.30]	26,500
A0369182	NPS25230L36D	DISCONTINUED							
A0369183	NPS25230L37C	DISCONTINUED							
A0369184	NPS25230L38B	DISCONTINUED							
A0369185	NPS25230L39D	DISCONTINUED							
A0369185LF	-	DISCONTINUED							
A0369186	NPS25230L40B	DISCONTINUED							
A0369186LF	-	DISCONTINUED							
A0369187	NPS25230L41D	DISCONTINUED							
A0369187LF	-	DISCONTINUED							
A0369188	NPS25230L42B	-9B	.150 [3.81]	2	.365 [9.27]	.200 [5.08] Au	.200 [5.08] Au	1.130 [28.70]	26,500
A0369188LF	-	-9B	.150 [3.81]	2	.365 [9.27]	.200 [5.08] Au	.200 [5.08] Au	1.130 [28.70]	26,500
A0369192	NPS25230L46D	DISCONTINUED							
A0369193	NPS25230L47C	DISCONTINUED							
A0369194	NPS25230L48B	DISCONTINUED							
A0369195	NPS25230L49D	-8D	.100 [2.54]	2	.465 [11.81]	.300 [7.62] Au	N/A SnPb	.860 [21.84]	40,000
A0369195LF	-	-8D	.100 [2.54]	2	.465 [11.81]	.300 [7.62] Au	N/A Sn	.860 [21.84]	40,000
A0369196	NPS25230L50C	-8C	.125 [3.18]	2	.465 [11.81]	.300 [7.62] Au	N/A SnPb	.860 [21.84]	32,000
A0369196LF	-	-8C	.125 [3.18]	2	.465 [11.81]	.300 [7.62] Au	N/A Sn	.860 [21.84]	32,000
A0369197	NPS25230L51B	DISCONTINUED							

LEGEND:  
 Au: GOLD  
 SnPb: TIN/LEAD  
 Sn: TIN

mat'l. code SEE NOTE 1				surface <input checked="" type="checkbox"/> tolerance		projection		product family NORCON	
lfr	ecr no	dr	date	tolerances unless otherwise specified		INCH/MM		title	
F				angles	linear .0004-.005/.004-.13	scale N.T.S.		FREE STANDING PINS COMPLIANT BACKPANEL	
				dr	T. BREWBAKER 2/2/06			dwg no	
				engr	T. BREWBAKER 2/2/06			sheet 4 of 5 size	
				chr	T. BREWBAKER 2/2/06			A3	
				appd	T. BREWBAKER 2/2/06			type Product Customer Drawing	
sheet index	revision sheet								

PRODUCT NUMBER	ENG. CODE	PIN ID	PITCH	FLAG TYPE	DIM "A"	DIM "C" PRIMARY SIDE	DIM "D" SECONDARY SIDE	DIM "F" PIN LENGTH	AVG. QTY. PER REEL
A0369198	NPS25230L52D								
A0369199	NPS25230L53C								
A0369199LF	—								
A0369200	NPS25230L54B								
A0369200LF	—								
A0369301	NPS25230L55C								
A0369301LF	—								
A0369302	NPS25230L56B								
A0369302LF	—								
A0376521	NPS25230L64D								
A0379660	NPS25230L65C								
A0379661	NPS25230L65B								
A0386410	NPS25230L59C								
A0386423	NPS25230L60B								
A0386424	NPS25230L60D								
A0386425	NPS25230L61B								
A0386426	NPS25230L61D								
A0386427	NPS25230L62B	—16B	.150 [3.81]	2	.335 [8.50]	.250 [6.35] Au	N/A SnPb	.730 [18.54]	26,500
A0386427LF	—	—16B	.150 [3.81]	2	.335 [8.50]	.250 [6.35] Au	N/A Sn	.730 [18.54]	26,500
A0386428	NPS25230L62D								
A0600173	NPS25230L67D	—19D	.100 [2.54]	1	.328 [8.33]	.300 [7.62] Au	N/A SnPb	.945 [24.00]	40,000
A0600173LF	—	—19D	.100 [2.54]	1	.328 [8.33]	.300 [7.62] Au	N/A Sn	.945 [24.00]	40,000
A0609814	NPS25230L70B								
A0623351	NPS25230L71D	—22D	.100 [2.54]	1	.263 [6.68]	.200 [5.08] Au	N/A SnPb	.782 [19.86]	40,000
A0623351LF	—	—22D	.100 [2.54]	1	.263 [6.68]	.200 [5.08] Au	N/A Sn	.782 [19.86]	40,000
A0623362	NPS25230L72D								

LEGEND:  
 Au: GOLD  
 SnPb: TIN/LEAD  
 Sn: TIN

mat'l. code SEE NOTE 1				surface <input checked="" type="checkbox"/> tolerance		projection		product family NORCON	
lfr	ecr no	dr	date	tolerances unless otherwise specified		INCH/MM		title	
F				angles	linear .0004-.005/.004-.13	scale N.T.S.		FREE STANDING PINS COMPLIANT BACKPANEL	
				dr	T. BREWBAKER 2/2/06			dwg no	
				engr	T. BREWBAKER 2/2/06			sheet 5 of 5 size	
				chr	T. BREWBAKER 2/2/06			54366 A3	
				appd	T. BREWBAKER 2/2/06			type Product Customer Drawing	
sheet index	revision sheet								