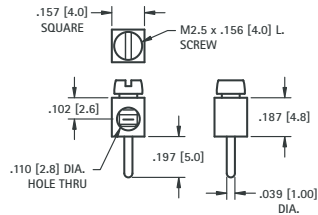


MINI BINDING POSTS



THRU HOLE

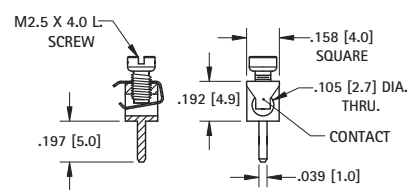


SPECIFICATIONS

Terminal: Brass, Tin Plate
Screw: Steel, Zinc Plate
Mounting Hole: .047 (1.2)
Current Rating: 15 AMP

CAT. NO. 8730 (Screw Installed)

WIRE CONTACT



SPECIFICATIONS

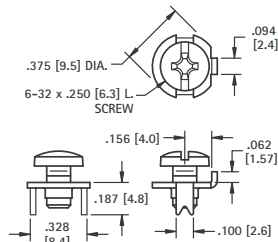
Terminal: Brass, Tin Plate
Screw: Steel, Zinc Plate
Contact: Phosphorus Bronze, Tin Plate
Mounting Hole: .047 (1.2)
Current Rating: 15 AMP

CAT. NO. 8737 (Screw Installed)

LOW PROFILE SCREW TERMINALS



6-32



SPECIFICATIONS

Rated: 15 Amps
Terminal: .032 (.81) Brass, Matte Tin Plate
Screw: Combination drive, Stainless Steel

CAT. NO. 1284 (No Screw Supplied)

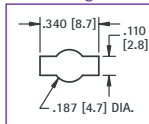
CAT. NO. 1298 (Screw Supplied Unassembled)

CAT. NO. 1201 (Screw Installed & Captivated)

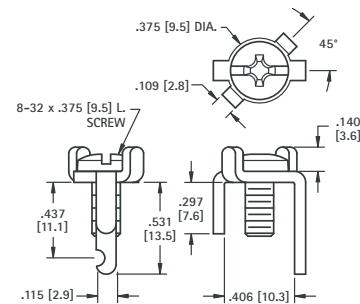
PRINCIPLE FEATURES

- Easy to connect using solid or stranded wire, crimp lugs or terminals
- Anti-rotation tab for use with spade terminals
- Supplied with screw installed and captivated, with screw unassembled, or without screw
- Stainless steel screw will not wick

Mounting Detail



8-32



SPECIFICATIONS

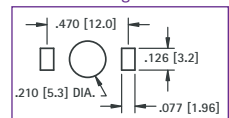
Rated: 15 Amps
Terminal: .064 (1.6) Brass, Matte Tin Plate
Screw: Brass, Nickel Plate

CAT. NO. 1205 (No Screw Supplied)

CAT. NO. 1207 (Screw Supplied Unassembled)

CAT. NO. 1209 (Screw Installed)

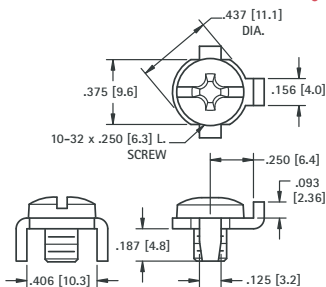
Mounting Detail



HEAVY DUTY SCREW TERMINALS - 30 AMP



10-32



SPECIFICATIONS

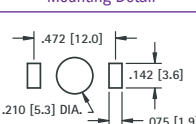
Rated: 30 Amps
Terminal: .062 (1.6) Brass, Matte Tin Plate
Screw: Combination drive, Stainless Steel

CAT. NO. 1293 (No Screw Supplied)

CAT. NO. 1299 (Screw Supplied Unassembled)

CAT. NO. 1202 (Screw Installed & Captivated)

Mounting Detail

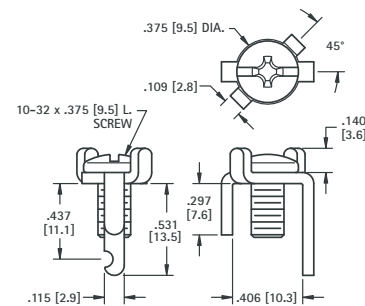


PRINCIPLE FEATURES

- Anti-rotation tab for use with spade terminals
- Below the board notched leg, to facilitate mechanical and solder connections
- Easy to connect using solid or stranded wire, crimp lugs or terminals
- Available with screw installed, unassembled, or without screw



10-32



SPECIFICATIONS

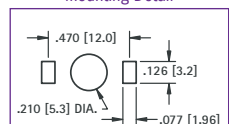
Rated: 30 Amps
Terminal: .064 (1.6) Brass, Matte Tin Plate
Screw: Steel, Nickel Plate

CAT. NO. 1206 (No Screw Supplied)

CAT. NO. 1208 (Screw Supplied Unassembled)

CAT. NO. 1283 (Screw Installed)

Mounting Detail



Mouser Electronics

Authorized Distributor

Click to View Pricing, Inventory, Delivery & Lifecycle Information:

[Keystone Electronics:](#)

[1299](#) [1293](#) [1201](#) [1202](#) [1284](#) [1207](#) [1208](#) [1298](#) [8737](#) [1205](#) [1206](#) [8730](#)