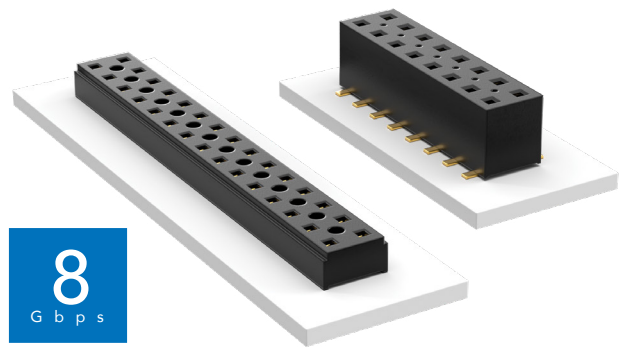


COST-EFFECTIVE & DUAL WIPE SOCKETS

(2.00 mm) .0787" PITCH • TLE/CLT SERIES



TLE

Mates:

TMMH, TMM, MTMM,
MMT, TW, LTMM, ZLTMM,
TCMD, TSH

CLT

Mates:

TMM, TMMH, MTMM,
MMT, TW, TSH

SPECIFICATIONS

TLE

Insulator Material:

Black Liquid Crystal Polymer

Contact Material:

Phosphor Bronze

Plating:

Au over 50 μ " (1.27 μ m) Ni

Operating Temp Range:

-55 °C to +125 °C

Current Rating (TLE/TMMH):

3.2 A per pin (2 pins powered)

Voltage Rating:

406 VAC/574 VDC

Insertion Depth:

(2.08 mm) .082" to

(4.37 mm) .172" with

(0.38 mm) .015" wipe,

pass-through, or

(3.35 mm) .132" min

for bottom entry

CLT

Same as TLE except:

Plating:

Sn or Au over 50 μ " (1.27 μ m) Ni

Current Rating (CLT/TMMH):

4.2 A per pin (2 pins powered)

Voltage Rating:

405 VAC/573 VDC

Insertion Depth:

Top Entry=

(1.40 mm) .055" minimum

Bottom Entry=

(2.57 mm) .101" minimum

(add board thickness for

correct post OAL)

Max Cycles:

100 with 10 μ " (0.25 μ m) Au

PROCESSING

TLE

Lead-Free Solderable: Yes

SMT Lead Coplanarity:

(0.10 mm) .004" max (02-26)

(0.15 mm) .006" max (26-34)*

*(.004" stencil solution

may be available; contact

ipg@samtec.com)

CLT

Same as TLE except:

SMT Lead Coplanarity:

(0.10 mm) .004" max (02-25)

(0.15 mm) .006" max (26-34)*

(0.20 mm) .008" max (35-50)*

*(.004" stencil solution

may be available; contact

ipg@samtec.com)

Note:

Some lengths, styles and
options are non-standard,
non-returnable.

TLE	-	1	NO. PINS PER ROW	-	01	-	PLATING OPTION	-	DV	-	OPTIONS
-----	---	---	------------------	---	----	---	----------------	---	----	---	---------

02 thru 50

No. of positions x (2.00) .0787

(4.00) .157

(4.32) .170

(4.50) .177

(5.56) .219

-G
= 10 μ " (0.25 μ m) Gold

-A
= Alignment Pin (3 positions minimum)

-K
= (5.00 mm) .197" DIA Polyimide Film Pick & Place Pad (3 positions minimum)

-P
= Metal Pick & Place Pad (4 positions minimum)

-TR
= Tape & Reel Packaging (2-37 positions only)

-FR
= Full Reel Tape & Reel (must order maximum quantity per reel; contact Samtec for quantity breaks) (2-37 positions only)

CLT	-	1	NO. PINS PER ROW	-	LEAD STYLE	-	PLATING OPTION	-	D	-	OTHER OPTIONS
-----	---	---	------------------	---	------------	---	----------------	---	---	---	---------------

02 thru 50

No. of positions x (2.00) .0787

(4.00) .157

(2.121) .0835

(2.29) .090

(5.16) .203

-01
= Through-hole

-02
= Surface Mount

-03
= Through-hole

-F
= Gold flash on contact, Matte Tin on tail

-L
= 10 μ " (0.25 μ m) Gold on contact, Matte Tin on tail

-G
= 10 μ " (0.25 μ m) Gold on contact, Gold flash on tail

-BE
= Bottom Entry (Required for bottom entry applications)

-A
= Alignment Pin (3 positions minimum) Metal or plastic at Samtec's discretion

-K
= (5.00 mm) .197" DIA Polyimide Film Pick & Place Pad (04 thru 50 only)

-P
= Pick & Place Pad (4 positions minimum) (Not always necessary for auto placement.)

-TR
= Tape & Reel (36 positions max)

-FR
= Full Reel Tape & Reel (must order maximum quantity per reel; contact Samtec for quantity breaks) (36 positions max)

ALSO AVAILABLE
Contact Samtec

Other Platings

02 thru 50

No. of positions x (2.00) .0787

(4.00) .157

(2.121) .0835

(2.29) .090

(5.16) .203

-01 or -03

LEAD STYLE

LEAD STYLE	A
-01	(2.16) .085
-03	(2.95) .116