

4

3

2

1

THIS DRAWING IS UNPUBLISHED.

RELEASED FOR PUBLICATION

© COPYRIGHT

ALL RIGHTS RESERVED.

LOC

DIST

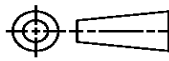
REVISIONS

P	LTR	DESCRIPTION	DATE	DWN	APVD
	B2	ECR-16-009824	28JUL2016	GK	SD

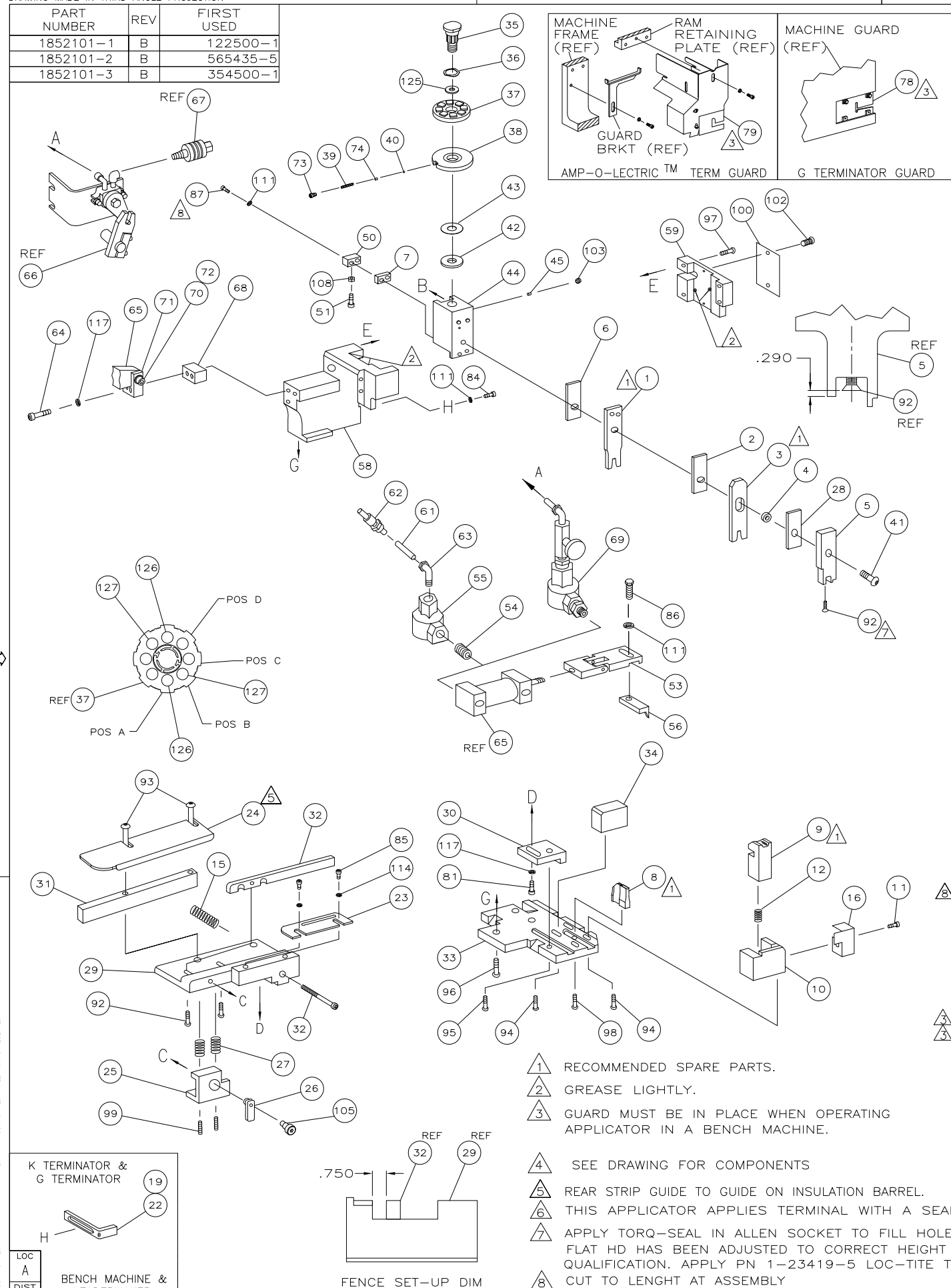
REPLACED BY OCEAN STYLE APPLICATOR PART
NUMBER 2836277-2

FOR REPLACEMENT PARTS FOR APPLICATOR 1852101
REFER TO ADDITIONAL PAGE(S). SPARE PARTS KIT (IF LISTED)
WILL REMAIN AVAILABLE.

THE REPLACEMENT OCEAN STYLE APPLICATOR HAS THE
SAME TERMINATOR/PRESS INTERFACE AS APPLICATOR
1852101

THIS DRAWING IS A CONTROLLED DOCUMENT.		DWN	GOPALAKRISHNA HV				
		CHK	GOPALAKRISHNA HV				
DIMENSIONS:		APVD	STOUGH DALE				
		PRODUCT SPEC					
		APPLICATION SPEC					
		WEIGHT					
MATERIAL		SIZE		CAGE CODE	DRAWING NO		RESTRICTED TO
		A 3			C= 1852101		
		CUSTOMER DRAWING			SCALE	SHEET 1 OF 2	REV B2

PART NUMBER	REV	FIRST USED
1852101-1	B	122500-1
1852101-2	B	565435-5
1852101-3	B	354500-1



1. RECOMMENDED SPARE PARTS.
2. GREASE LIGHTLY.
3. GUARD MUST BE IN PLACE WHEN OPERATING APPLICATOR IN A BENCH MACHINE.
4. SEE DRAWING FOR COMPONENTS
5. REAR STRIP GUIDE TO GUIDE ON INSULATION BARREL.
6. THIS APPLICATOR APPLIES TERMINAL WITH A SEAL.
7. APPLY TORQ-SEAL IN ALLEN SOCKET TO FILL HOLE FLAT HD HAS BEEN ADJUSTED TO CORRECT HEIGHT A QUALIFICATION. APPLY PN 1-23419-5 LOC-TITE TO CUT TO LENGTH AT ASSEMBLY
- 8.

TERMINAL NAME: L-TYPE FEMALE										6
AMP TERM PN		MFR TERM PN		YAZAKI TERMINAL				AMP CRIMP SPECS		
SOCKET		SOCKET		PAD LTR	CRIMP HEIGHT			WIRE SIZE		
1572755		7116-3250			A	.128 ±.002 [3.25 ±.05mm]			8	
					B	.110 ±.002 [2.79 ±.05mm]			10	
					C	NOT			USED	
					D	NOT			USED	
				CRIMP	SIZE		TYPE		RANGE	
AMP SEAL PN		MFR SEAL PN			WIRE		.220 [5.9mm]		F 10-8	
1572770.7		157-3580-6		INSUL		.280 [7.1mm]		F .175 MAX		
WIRE STRIP LENGTH			TERM APPL SPEC		FEED		APPL INSTRUCTION		SET UP GAGE LAYOUT	
—			NONE		1.037		408-8040		458637-11185210	

									129
									128
2	2	2	-	C	6-354778-3	PIN, WIRE DISC. .2810 B			127
2	2	2	-	C	2-354778-7	PIN, WIRE DISC. .2630 A			126
1	1	1	-	A	986950-1	WASHER, FLAT PRECISION			125
1	1	1	-	A	217238-1	GENERAL INSTRUCTION PACKAGE			124
1	1	1	-	-	4088040	SF APPL INST 408-8040			123
									122
									121
									120
									119
									118
3	3	3	-	A	21024-5	WASHER, LOCK(#10)ADJ BLOCK			117
									116
									115
2	2	2	-	A	21024-2	WASHER, LOCK (#4)			114
									113
									112
4	4	4	-	A	21024-4	WASHER,LOCK(#8)STRIPPER			111
									110
									109
1	1	1	-	A	21018-5	NUT,HEX(NO.6)HOLDDOWN			108
									107
									106
1	1	1	-	A	21989-8	SCR, SHC SHLD DRAG			105
									104
1	1	1	-	A	21009-2	SCR,SKT SET(1/4-20x.25 LW)RAM			103
2	2	2	-	A	21017-2	SCR,DRIVE(#2x.19)ID PLATE			102
									101
1	1	1	-	B	461264-1	PLATE, IDENTIFICATION			100
2	2	2	-	A	5-21006-6	SCR,SET(10-32x.75)			99
1	1	1	-	A	22733-8	SCR,BHC(8-32x.38 LW)ANVIL			98
4	4	4	-	A	2-21002-9	SCR,BHC(10-32x.75)CAP			97
3	3	3	-	A	2-22733-8	SCR,BHC(1/4-20x.62)HSG			96
1	1	1	-	A	2-21002-7	SCR,BHC(10-32x.50)SG ADJ BLK			95
4	4	4	-	A	2-21002-2	SCR,BHC(8-32x.50)TERM H DWN			94
2	2	2	-	A	9-21002-6	SCR,BHC(8-32x.88)R STP GDE			93
1	1	1	-	A	2-21003-0	SCR,FHC(6-32x.50)DEP			92
4	4	4	-	A	1-21002-4	SCR, BHC (4-40X.38) FENCE			91
									90
									89
									88
2	2	2	-	A	2-21000-8	SCR,SHC(8-32x.625)STRIPPER			87
1	1	1	-	A	2-22603-1	SCR,HEX HD(8-32x.38)FEED FINGER			86
2	2	2	-	A	1-21000-3	SCR,SHC(4-40x.25)			85
1	1	1	-	A	2-21000-7	SCR,SHC(8-32x.50)STRIPPER			84
									83
									82
1	1	1	-	A	3-21000-4	SCR,SHC(10-32x.38)SG ADJ BL			81
									80
-	1	-	-	B	462992-7	GUARD ASSY			79
REF	-	-	-	B	679532-1	INSERT, GUARD			78
									77
									76
									75
1	1	1	-	A	690603-1	SPRING, ASSIST			74
1	1	1	-	A	23030-1	SCR,SHC(6-32x.25 SL)INS DISC			73
1	1	1	-	A	3-21001-5	SCR,SHC(3/8x1.00)FEED MT			72
1	1	1	-	B	459610-3	MOUNT, FEED BRACKET			71
-3	-2	-1	U/M	DWG SIZE	PART NO	DESCRIPTION			ITEM NO
QTY REQD PFR ASSY				PARTS LIST					

ITEM 34 LOCATION

300 ± 0.20

REF	B1	ECR-08-022358	DM
	B	ECR-06-004292	GB
		PRODUCT RELEASE	CMR
		PRODUCTION RECORD	QPR

	-1	LEADMAKER				AIRFEED		
	-2	BENCH	MODEL	K		AIRFEED		
	-3	BENCH	MODEL	G		AIRFEED		
A	1	1	1	-	A	21024-8	WASHER,LOCK(3/8)FEED BRKT	70
	-	1	-	-	C	692655-5	AIR FEED VALVE ASSY	69
	1	1	1	-	A	461690-1	SPACER, AIR FEED	68
A	-	REF	-	-	A	24042-2	VALVE, SHUT OFF	67
	-	REF	-	-	C	692655-6	AIR FEED VALVE ASSY	66
A	1	1	1	-	B	461065-2	AIR FEED ASSY (2 INCH)	65
	2	2	2	-	A	4-21000-3	SCR,SHC(10-32x2.00)AIR ASSY	64
	1	-	1	-	A	980285-2	ELBOW, SWIVEL 1/8 NPT - 1/4 T	63
	1	-	1	-	A	23238-1	QUICK DISCONNECT	62
	21.00	-	21.00	IN	A	27319-4	TUBING, POLY-FLO Ø.25	61
								60
	1	1	1	-	C	454220-1	CAP, RAM	59
	1	1	1	-	D	454485-1	HOUSING	58
								57
	1	1	1	-	B	3-694433-1	PAWL, FEED	56
	1	-	1	-	A	22374-7	VALVE, QUICK EXHAUST	55
A	1	-	1	-	A	22304-1	NIPPLE, HEX	54
	1	1	1	-	B	461062-1	FEED FINGER ASSY	53
								52
	1	1	1	-	A	811242-2	BUMPER, HOLDDOWN	51
	1	1	1	-	A	690753-1	SPACER, TONKER	50
								49
								48
								47
								46
	1	1	1	-	A	690191-1	PLUG, NYLON	45
	1	1	1	-	C	819307-7	RAM	44
	1	1	1	-	A	690125-1	WASHER, LAMINATED	43
	1	1	1	-	A	1-690124-0	WASHER, RAM	42
	1	1	1	-	A	7-21002-9	BOLT, CRIMPER(5/16x1.00)	41
	1	1	1	-	A	23241-6	BALL, STEEL	40
	1	1	1	-	A	690170-1	SPRING, COMPRESSION	39
	1	1	1	-	C	1-690142-2	DISC, INSULATION	38
	1	1	1	-	D	354777-1	DISC, WIRE	37
	1	1	1	-	A	22480-5	WASHER, SPRING	36
	1	1	1	-	B	690212-1	POST, RAM	35
	1	1	1	-	B	690786-3	SUPPORT, TERMINAL	34
	1	1	1	-	D	318055-1	PLATE, BASE	33
	1	1	1	-	C	189807-5	FENCE	32
	1	1	1	-	C	1-1320908-2	PLATE, STRIP GUIDE	31
	1	1	1	-	B	455689-1	BLOCK, STRIP GUIDE ADJ	30
	1	1	1	-	C	1633087-9	PLATE, STRIP GUIDE	29
	1	1	1	-	C	455888-5	SPACER, FRONT SHEAR DEP	28
	2	2	2	-	C	1-22284-0	SPRING COMPRESSION	27
	1	1	1	-	C	356835-1	LEVER DRAG RELEASE	26
S	1	1	1	-	C	240792-1	TERMINAL DRAG	25
	1	1	1	-	D	1320928-2	GUIDE, STRIP (REAR)	24
	1	1	1	-	C	693855-1	FRONT STRIP GUIDE	23
	-	-	1	-	B	690472-2	STRIPPER	22
								21
								20
	1	1	-	-	B	691353-1	STRIPPER	19
								18
								17
	1	1	1	-	B	318563-1	GUARD, CHIP, FRONT	16
	1	1	1	-	C	1-22281-8	SPRING COMPRESSION	15
								14
								13
	1	1	1	-	A	4-22280-8	SPRING, SHEAR	12
	1	1	1	-	B	1-690461-7	STOP, SHEAR	11
I	1	1	1	-	C	1-690459-7	HOLDER, SHEAR (FRONT)	10
	1	1	1	-	C	318059-1	SHEAR, FLOAT (FRONT)	9
I	1	1	1	-	C	3-318088-1	ANVIL	8
	1	1	1	-	C	240641-9	SPACER, DEPRESSOR (REAR)	7
	1	1	1	-	C	455888-1	SPACER, CRIMPER	6
	1	1	1	-	C	122399-2	DEPRESSOR, SHEAR (FRONT)	5
	1	1	1	-	B	238011-1	SPACER, BLOCK CRIMPER	4
I	1	1	1	-	C	4-1583690-8	CRIMPER, INSULATION	3
I	1	1	1	-	C	2-455888-5	SPACER, CRIMPER	2
	1	1	1	-	C	456413-2	CRIMPER, WIRE	1
	-3	-2	-1	U/M	DWG SIZE	PART NO	DESCRIPTION	ITEM NO
← REVISION OF EACH ASSY NO (WHEN BLANK, USE DWG REVISION)								
QTY REQD PER ASSY PARTS LIST								
DIMENSIONS IN INCHES. DO NOT SCALE PRINT. TOLERANCES UNLESS OTHERWISE SPECIFIED: 2 PLC DEC ±.25 3 PLC DEC ±. 4 PLC DEC ±. ANGLES ±. SURF TEXTURE: ✓ REMOVE BURRS, BREAK SHARP EDGES R.015 MAX					MATL - HT TR - FIN -			
DR C.REICHELDERFER 17AUG05 APP 17AUG05 T.ELBIN					CHK - REL -		AMP Tyco Electronics Harrisburg, PA 17105-3608	
NAME					SIDE FEED HDM APPLICATOR			MACHINE REF MINI APPL
SCALE -					D DWG NO 1852101		SHEET 1 of 1 REV B1	
CAGE CODE 00779					CUSTOMER AND ASSEMBLY DRAWING			
DATE					RESTRICTED TO -			

Mouser Electronics

Authorized Distributor

Click to View Pricing, Inventory, Delivery & Lifecycle Information:

[TE Connectivity:](#)

[1852101-2](#)