

HPX15-77-D1M



4.6 m | 15 ft High Performance Parabolic Shielded Antenna, dual-polarized, 7.725–8.275 GHz, PDR84, gray antenna, standard white radome with flash, standard pack—two-piece reflector

Product Classification

Product Type Microwave antenna

General Specifications

Antenna Type	HPX - High Performance Parabolic Shielded Antenna, dual-polarized
Diameter, nominal	4.6 m 15 ft
Packing	Standard pack
Radome Color	White
Radome Material	Standard
Reflector Construction	Two-piece reflector
Antenna Input	PDR84
Antenna Color	Gray
Antenna Type	HPX - High Performance Parabolic Shielded Antenna, dual-polarized
Diameter, nominal	4.6 m 15 ft
Flash Included	Yes
Polarization	Dual

Electrical Specifications

Operating Frequency Band	7.725 – 8.275 GHz
Electrical Compliance	US FCC Part 78B
Operating Frequency Band	7.725 – 8.275 GHz

Mechanical Specifications

Fine Azimuth Adjustment	±5°
Fine Elevation Adjustment	±3.6°
Mounting Pipe Diameter	115 mm 4.5 in
Net Weight	499 kg 1100 lb
Side Struts, Included	1 inboard
Side Struts, Optional	2 outboard

HPX15-77-D1M

Wind Velocity Operational	110 km/h 68 mph
Wind Velocity Survival Rating	200 km/h 125 mph

Wind Forces At Wind Velocity Survival Rating

Angle α for MT Max	110 °
Axial Force (FA)	39672 N 8919 lbf
Force on Inboard Strut Side	35233 N 7921 lbf
Side Force (FS)	19652 N 4418 lbf
Twisting Moment (MT)	29828 N-m 22000 ft lb
Weight with 1/2 in (12 mm) Radial Ice	952 kg 2099 lb
Zcg with 1/2 in (12 mm) Radial Ice	1372 mm 54 in
Zcg without Ice	1306 mm 51 in

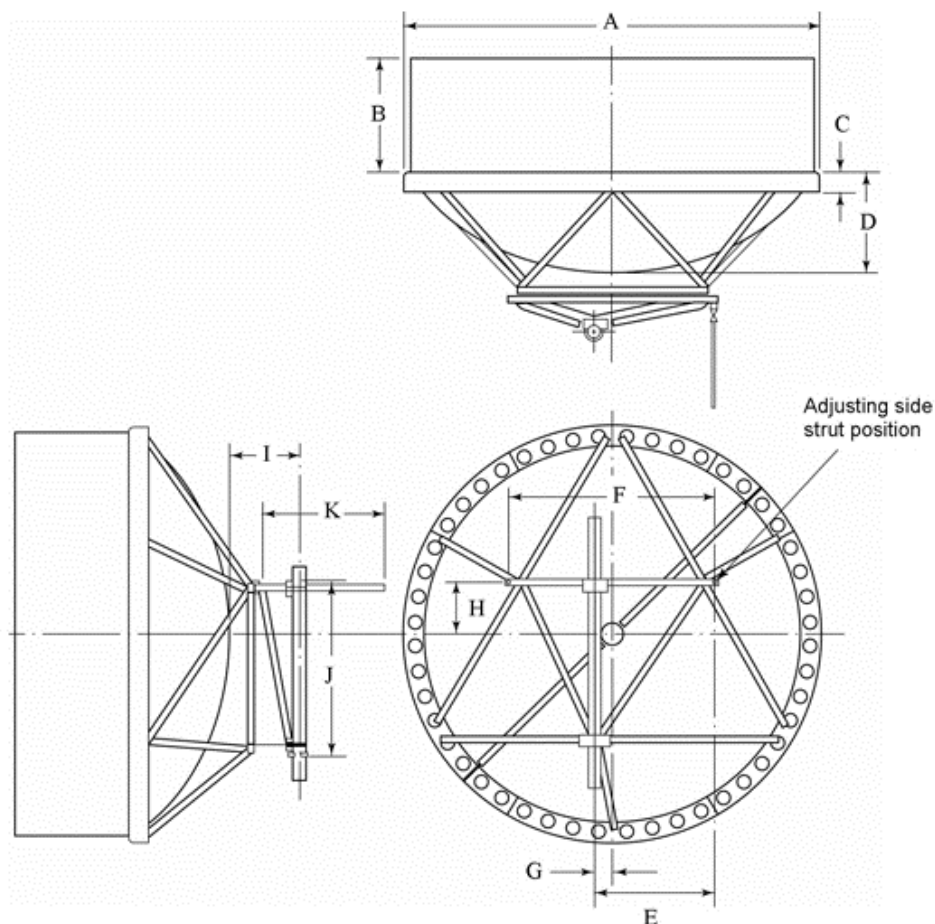
Wind Forces At Wind Velocity Survival Rating Image



Packed Dimensions

Gross Weight, Packed Antenna	1136.0 kg 2504.5 lb
Height	2570.0 mm 101.2 in
Length	4930.0 mm 194.1 in
Volume	19.4 m ³
Width	1530.0 mm 60.2 in

Antenna Dimensions And Mounting Information



ANTENNA DIMENSIONS			
All dimensions in mm (inches)			
A	4685 (184.5)	G	200 (8)
B	1245 (49.0)	H	595 (23.5)
C	135 (5.3)	I	595 (23.5)
D	865 (34.0)	J	1930 (76.0)
E	1310 (51.5)	K	1240 (108)
F	2210 (87)		

Regulatory Compliance/Certifications

Agency

ISO 9001:2015

Classification

Designed, manufactured and/or distributed under this quality management system



* Footnotes

Axial Force (FA)	Maximum forces exerted on a supporting structure as a result of wind from the most critical direction for this parameter. The individual maximums specified may not occur simultaneously. All forces are referenced to the mounting pipe.
Operating Frequency Band	Bands correspond with CCIR recommendations or common allocations used throughout the world. Other ranges can be accommodated on special order.
Packing	Andrew standard packing is suitable for export. Antennas are shipped as standard in totally recyclable cardboard or wire-bound crates (dependent on product). For your convenience, Andrew offers heavy duty export packing options.
Side Force (FS)	Maximum side force exerted on the mounting pipe as a result of wind from the most critical direction for this parameter. The individual maximums specified may not occur simultaneously. All forces are referenced to the mounting pipe.
Twisting Moment (MT)	Maximum forces exerted on a supporting structure as a result of wind from the most critical direction for this parameter. The individual maximums specified may not occur simultaneously. All forces are referenced to the mounting pipe.
Wind Velocity Operational	The wind speed where the antenna deflection is equal to or less than 0.1 degrees. In the case of ValuLine antennas, it is defined as a maximum deflection of 0.3 x the 3 dB beam width of the antenna.
Wind Velocity Survival Rating	The maximum wind speed the antenna, including mounts and radomes, where applicable, will withstand without permanent deformation. Realignment may be required. This wind speed is applicable to antenna with the specified amount of radial ice.