

## Accessories

### Filtration - Inlet Filter (Single Connection)

# ROTRON®

Inlet Filters protect the blower and the air distribution system from dust, and other airborne particles and contaminants. Normally used in pressure systems.

#### SPECIFICATIONS:

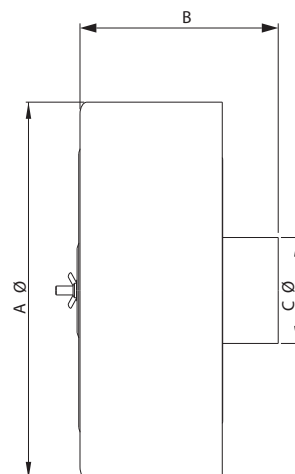
HOUSING – Steel

MEDIA – Polyester

EFFICIENCY – 97-98% (8 to 10 micron particle size)

FILTER ELEMENT – Replaceable (see filter elements)

NOTE: “Z” MEDIA (1 to 3 micron particle size) available



		Part/Model Number								
Specification	Units	477411	516466	515122	515123	515124	515125	515145	515151	516511
Filter Element	-	A	B	C, D	E	E	F	G	H	H
Ref Blower Model	-	271078	515132	515132	515133	515134	515134	515134	515135	516515
Outlet Connection	-	2.00 SO	1.00 NPT	1.50 NPT	2.00 NPT	2.00 NPT	2.50 NPT	3.00 NPT	4.00 NPT	6.00 NPT
Dimension A	Inches	4.56	6.00	6.00	7.75	10.00	10.00	10.00	10.00	16.00
	mm	115.8	152.4	152.4	196.9	254	254	254	254	406.4
Dimension B	Inches	6.12	6.50	6.50	7.25	12.25	12.50	13.00	14.00	15.00
	mm	155.4	165.1	165.1	184.2	311.2	317.5	330.2	355.6	381
Dimension C	Inches	2.00	1.00	1.5	2.00	2.00	2.50	3.00	4.00	6.00
	mm	50.8	25.4	38.1	50.8	50.8	63.5	76.2	101.6	152.4
Z Media Filter PN	-		517865	517866	517867	517868	517869	517870	517871	517872

#### Blower Model Reference Key

A = SPIRAL	E = DR/EN/CP 656, 6, 633, S7
B = DR/EN/CP 068, 083, 101, 202	F = DR/EN/CP 757, 808, 858, S9, P9 (Inlet Only)
C = DR/EN/CP 303, 312, 313, 353	G = DR/EN/CP 833, S13, P13 (Inlet Only)
D = DR/EN/CP 404, 454, 513, 505, 555, 523	H = DR/EN/CP 909, 979, 1233, 14, S15, P15 (Inlet Only)

This document is for informational purposes only and should not be considered as a binding description of the products or their performance in all applications. The performance data on this page depicts typical performance under controlled laboratory conditions. AMETEK is not responsible for blowers driven beyond factory specified speed, temperature, pressure, flow or without proper alignment. Actual performance will vary depending on the operating environment and application. AMETEK products are not designed for and should not be used in medical life support applications. AMETEK reserves the right to revise its products without notification. The above characteristics represent standard products. For product designed to meet specific applications, contact AMETEK Technical & Industrial Products Sales department.

AMETEK TECHNICAL & INDUSTRIAL PRODUCTS  
 75 North Street, Saugerties, NY 12477  
 USA: +1 215-256-6601 - Europe: +44 (0) 845 366 9664 - Asia: +86 21 5763 1258  
 Customer Service Fax: +1 215.256.1338  
[www.ametektip.com](http://www.ametektip.com)