

5.10±0.15

3.75 MAX.

0.95

7.60

4.40

3.50

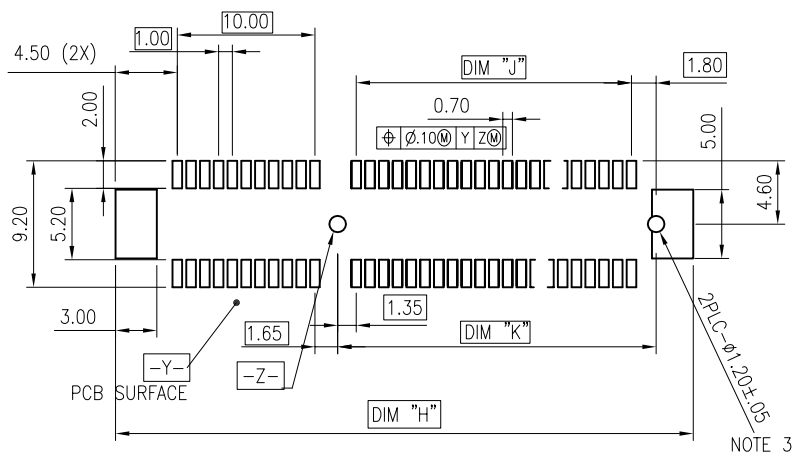
SECTION F-F

form: A4



Copyright FCI

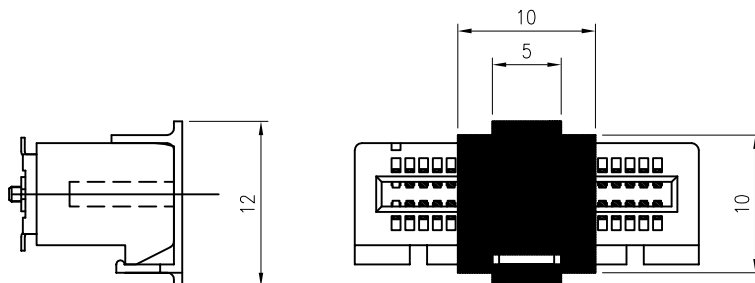
[illegible]



RECOMMENDED PCB LAYOUT, PAD TYPE

DIMENSIONS								
POSITION	A	B ± 0.15 -0.05	C ± 0.20	D ± 0.23	E ± 0.20	H ± 0.10	J	K ± 0.10
36	6.00	7.65	9.15	25.00	27.00	28.00	6.00	9.15
64	20.00	21.65	23.15	39.00	41.00	42.00	20.00	23.15
98	37.00	38.65	40.15	56.00	58.00	59.00	37.00	40.15
164	70.00	71.65	73.15	89.00	91.00	92.00	70.00	73.15

POSTION OF CAP



mat'l. code				surface 58/	tolerance	projection	product family			
-				ISO 1302	ISO 406 ISO 1101		PCI_EXPRESS			
ltr	ecn no	dr	date	tolerances unless otherwise specified			title			
K	-	-	-	angles	linear	MM	PCI_EXPRESS_CARD_EDGE ASSEMBLY(SMT)			
				0°±2°		scale 2				
				dr	MAGGIE_WU	06'/6/21	dwg no		sheet 3 of 6	size
				enr	RICHARD_CHIU	06'/6/21	10061913			A4
				chr	PAUL_WANG	06'/6/21				
				app	JOSEPH_HSIA	06'/6/21	type		CUSTOMER Drawing	
sheet index	revision	K								
	sheet	3								

NOTES:

1.MATERIAL:

HOUSING: NYLON, GLASS FILLED UL94V-0 RATE, SUITABLE FOR I.R
SOLDERING.

TERMINAL: COPPER ALLOY

PLATING: 50u" NICKEL UNDERPLATE ALL OVER
CONTACT AREA PLATING - SEE PRODUCT NUMBER CODE
SOLDER TAIL: TIN 100u" OVER 50u" NICKEL

METAL PADS: COPPER ALLOY
FINISH: 100u" TIN OVER 50u" NICKEL

2.PRODUCT SPECIFICATION: GS-12-390

- ③THE HORIZONTAL AXIS FOR THE PAD PATTERN IS ESTABLISHED BY
A LINE THROUGH THE CENTER OF THE TWO Ø1.0 HOLES.
THE VERTICAL AXIS IS 90° TO THE HORIZONTAL AXIS, THROUGH THE CENTER
OF DATUM $\square Z \square$

- ④NO TIE BAR PERMITTED FROM CARD EDGE TO LEADING EDGE OF PAD FOR
PINS A1.

- ⑤CHAMFER EDGES MUST BE FREE OF CUTTING BURRS.

6.RoHS COMPATIBLE PRODUCT SPECIFICATIONS

a - PLATING:

- "LF" MEANS THE PRODUCT IS LEAD-FREE

b - MANUFACTURING PROCESS COMPATIBILITY

- THE HOUSING WILL WITHSTAND EXPOSURE TO 260°C±5°C PEAK TEMPERATURE FOR
5 SECONDS IN A CONVECTION, INFRA-RED OR VAPOR PHASE REFLOW OVEN.

- 7.A \triangle SYMBOL WILL BE NEXT TO ANY DIMENSION, VIEW, OR NOTE WHICH HAS BEEN MODIFIED
WITH CURRENT DRAWING REVISION.

PRODUCT NUMBER CODE

10061913-X X X X L F

HOUSING COLOR OPTIONS

0-WHITE
1-BLACK

LEAD FREE

PACKAGING OPTIONS

T-TRAY PACKAGING WITHOUT CAP
R-TAPE & REEL PACKING WITHOUT CAP AND MYLAR (FOR
36P&64P OPTIONS ONLY)
P-TAPE & REEL PACKING WITH CAP (FOR 36P&64P&98P
OPTIONS ONLY)
C-TRAY PACKAGING WITH CAP
M-TAPE & REEL PACKING WITH MYLAR (FOR 36P&64P
OPTIONS ONLY)
N-TRAY PACKAGING WITH MYLAR
Y-HARD TRAY(FOR 164P ONLY)
Z-HARD TRAY PACKAGING WITH MAYLAR(FOR 164P ONLY)
A-44MM WIDTH TAPE&REEL PACKING WITH MYLAR(FOR 36P ONLY)
B-HARD TRAY PACKAGING WITH CAP(FOR 164P ONLY) \triangle

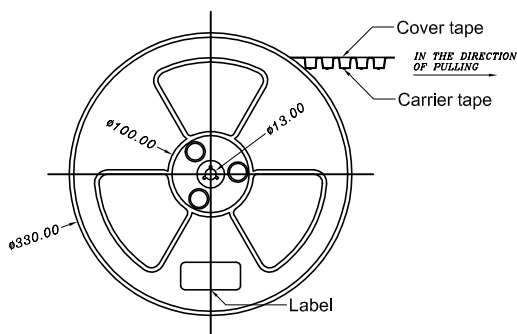
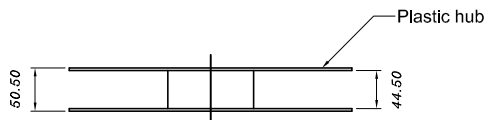
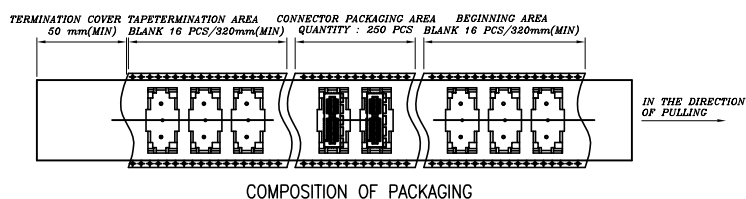
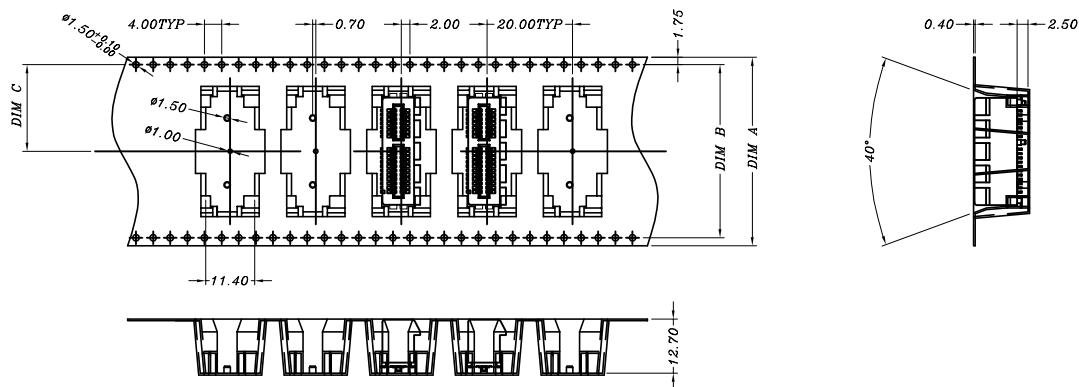
TERMINAL PLATING OPTIONS

0-50u" Ni UNDERPLATE
30u" Au CONTACT AREA
100u" TIN TAIL AREA ----- COMPATIBLE RoHS
1-50u" Ni UNDERPLATE
15u" Au CONTACT AREA
100u" TIN TAIL AREA ----- COMPATIBLE RoHS
2-50u" Ni UNDERPLATE
GOLD FLASH CONTACT AREA
100u" TIN TAIL AREA ----- COMPATIBLE RoHS
3-50u" Ni UNDERPLATE
30u" Au CONTACT AREA
 \triangle GOLD FLASH TAIL AREA ----- COMPATIBLE RoHS

POS OPTIONS

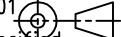


0-36
1-64
2-98
3-164

mat'l. code				surface 58/	tolerance	projection	product family									
-				ISO 1302	ISO 406	ISO 1101	PCI_EXPRESS									
ltr	ecn no	dr	date	tolerances unless otherwise specified			title									
K	-	-	-	angles	linear											
				0°±2'												
				dr	MAGGIE_WU	06'/6/21										
				engr	RICHARD_CHIU	06'/6/21										
				chr	PAUL_WANG	06'/6/21										
				app	JOSEPH_HSIA	06'/6/21										
sheet index	revision	K					dwg no									
	sheet	4					sheet 4 of 6									
							size									
							10061913									
							A4									
							type									
							CUSTOMER Drawing									



TAPE AND REEL
PACKING
RECOMMENDED FOR
36PINS ONLY

DIMENSIONS					
POSITIONS	A	B	C	D REF.	E REF.
36 (10061913-xxxALF)	44.00	40.40	20.20	44.5	50.5
64	56.00	52.60	26.30	56.4	60.4

mat'l. code —				surface 58 ✓ ISO 1302		tolerance ISO 406 ISO 101		projection 		product family PCI_EXPRESS										
ltr	ecn no	dr	date	tolerances unless otherwise specified						title										
K	—	—	—	angles	linear	.X±.3				PCI_EXPRESS_CARD_EDGE										
						.XX±.20				ASSEMBLY(SMT)										
				0°±2'		XXX±.10				scale 1										
				dr	MAGGIE_WU		06'/6/21				dwg no						sheet 5 of 6		size	
				engr	RICHARD_CHIU		06'/6/21				10061913						A4			
				chr	PAUL_WANG		06'/6/21													
				appd	JOSEPH_HSIA		06'/6/21													
sheet index		revision		K																
		sheet		5																

1 For PCI EXPRESS SMT TYPE 36P ONLY.

2. Material :

2.1 Reel :

2.1.1 Plastic hub : High Impact Polystyrene

2.1.2 Cover tape : PE

2.1.3 Carrier tape : ABS

2.2 Waterproof bag : PE

2.3 Desiccative : Silica Gel

2.4 Carton : Corrugated paper

2.5 Baffle : E.P.E

2.6 Angle paperboard : Corrugated paper

3. Dimension :

3.1 Reel :

3.1.1 Plastic hub : $\phi 330 \times T50.5$ mm

3.1.2 Cover tape : 5690(L) x 37.4(W) mm

3.1.3 Carrier tape : 5640(L) x 44(W)mm

3.2 Waterproof bag : 600(H) x 465(W) x 0.06(T) mm

3.3 Desiccative : 25 gram / Package

3.4 Carton : 380(L) x 380(W) x 300(H) mm

3.5 Baffle (1): 370(L) x 370(W) x 15(H) mm

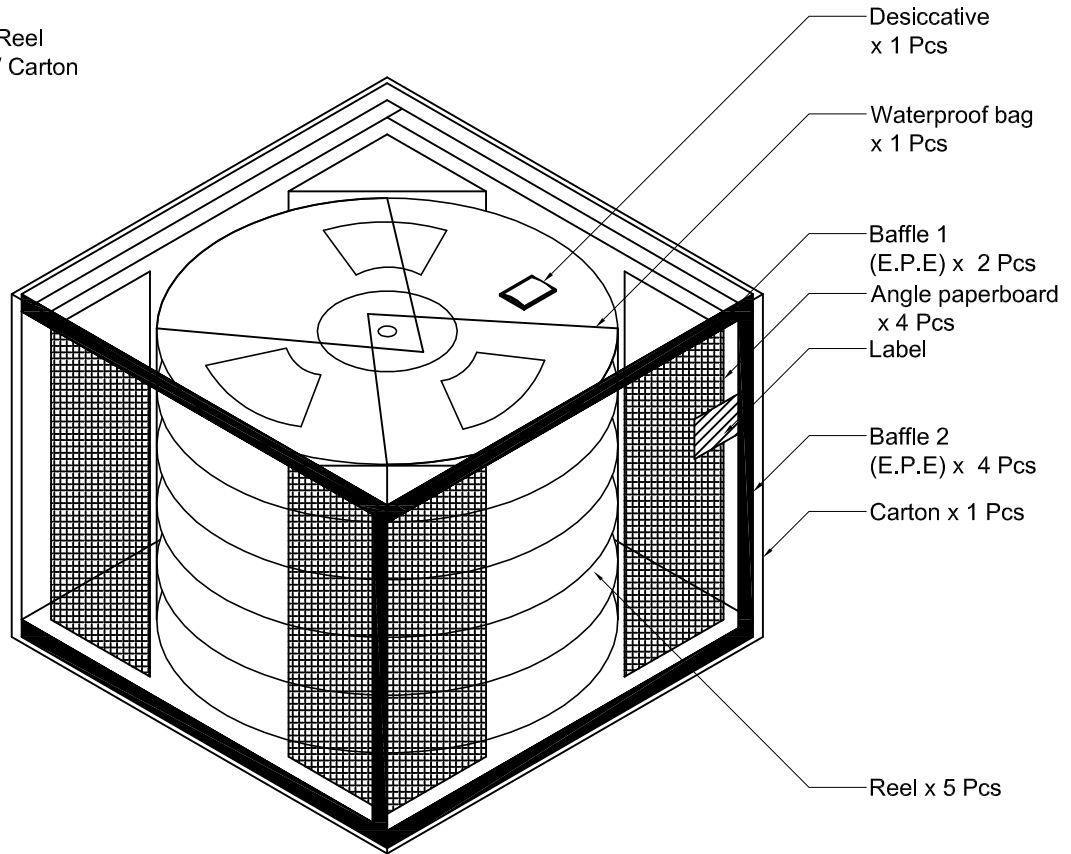
3.6 Baffle (2): 355(L) x 252(W) x 15(H) mm

3.7 Angle paperboard : 252(H)

4. Quantity :

4.1 250 Pcs / Reel

4.2 1250 Pcs / Carton



mat'l. code				surface 58/	tolerance	projection	product family			
-				ISO 1302	ISO 406 ISO 1101		PCI_EXPRESS			
ltr	ecn no	dr	date	tolerances unless otherwise specified			title			
K	-	-	-	angles	linear	MM	PCI_EXPRESS_CARD_EDGE ASSEMBLY(SMT)			
				0°±2'		scale 1				
				dr	MAGGIE_WU	06'/6/21	dwg no		sheet 6 of 6	size
				engr	RICHARD_CHIU	06'/6/21	10061913		A4	
				chr	PAUL_WANG	06'/6/21				
				app	JOSEPH_HSIA	06'/6/21	type		CUSTOMER Drawing	
sheet index	revision	K								
	sheet	6								