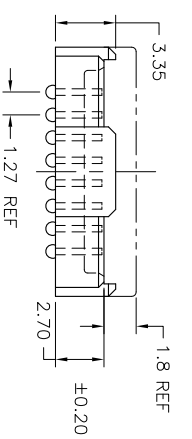
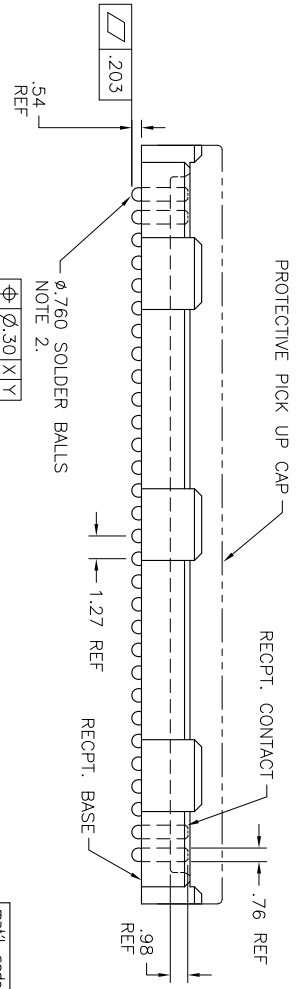
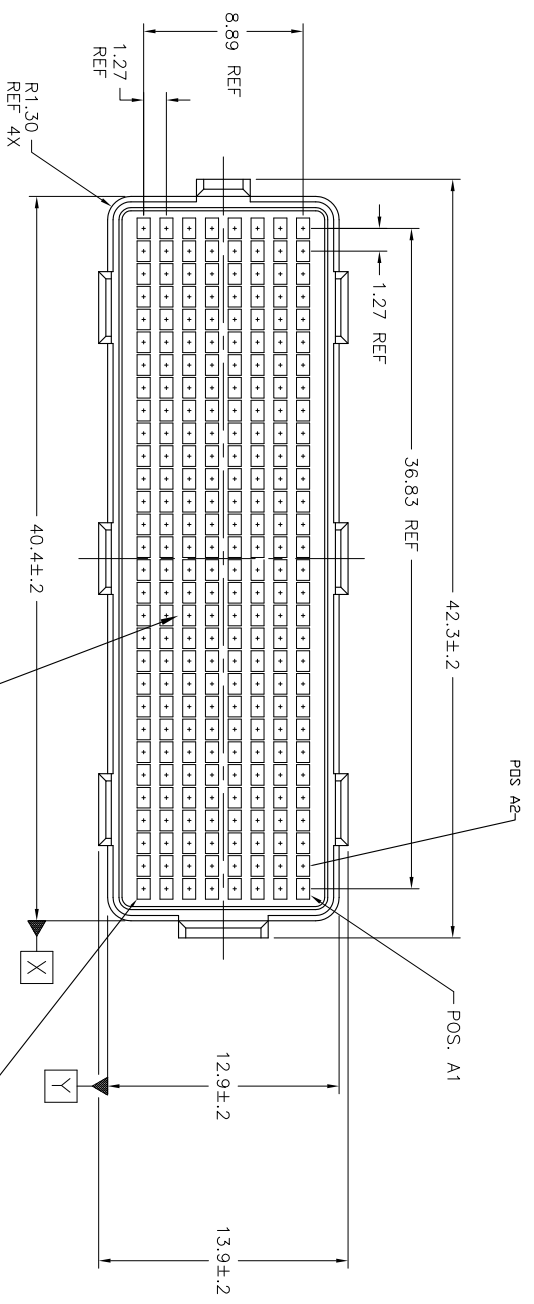


PRODUCT NUMBER
SEE SHEET 3

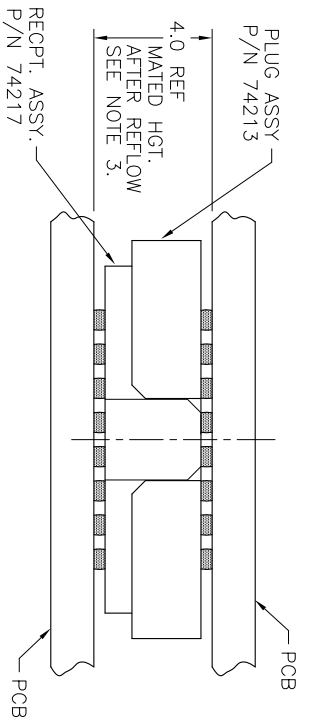


mat'l code	SEE NOTE 1	surface	tolerance	projection	product family
Ln	ecn no	dr	date	ASME Y14.5	ASME Y14.5
M	V06-0360	LP	2006/06/22	angles	X *3
N	V-13467	DOCH	2012-11-15	tolerances unless otherwise specified	XX *0
P	V-16678	DCH	2014-1-7	XXX *050	Scale 1:1
R	V-17551	DOCH	2014-04-28	D WAUGHEN	11.12.97
S	V-20116	RWB	2015-1-28	EMGR	11.12.97
L	V04-0940	VS	10/18/04	CHN	11.12.97
Sheet	revision	S	S	S	FCI
index	Sheet	1	2	3	MM

title	dwg no	sheet 1 of 3	size
MEG-Array	4mm RECPT. ASSY. 8 X 30 = 240 POS.	74217	A4
type	CUSTOMER Drawing		

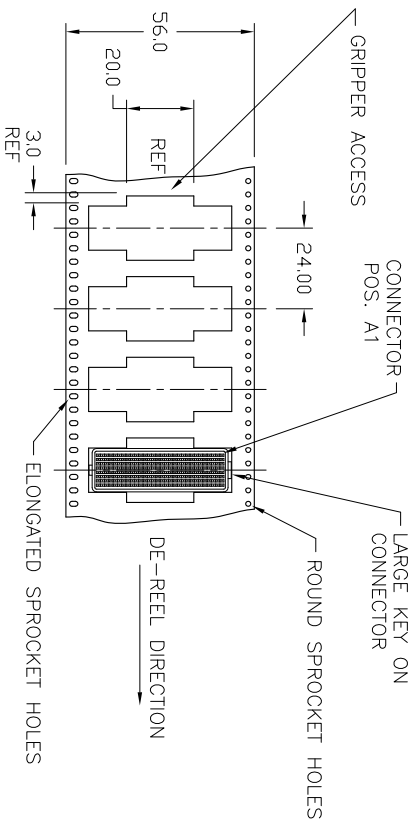
PICK UP CAP
FLAT AREA POS. A1

STENCIL MATED CONNECTOR OUTLINE
ONTO BOARD.

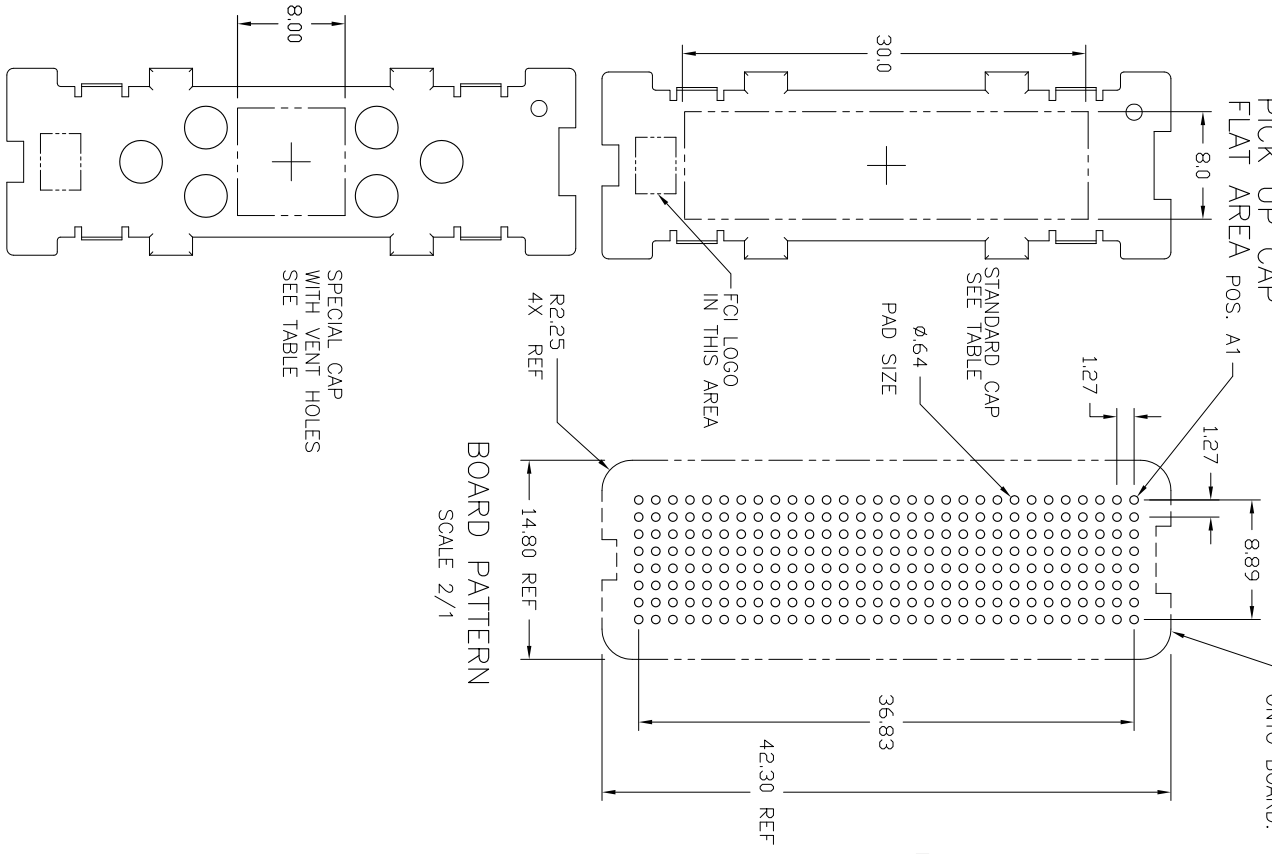


MATED HEIGHT AFTER REFLOW IS BASED ON ϕ .64mm PAD (METAL-DEFINED) AND .13mm SOLDER PASTE STENCIL THICKNESS. SEE NOTE 3.

END VIEW - MATED CONNECTORS



TAPE & REEL PACKAGING SCALE NONE
PER EIA 481-3



BOARD PATTERN
SCALE 2/1

mat'l code	SEE NOTE 1	surface	ASME Y14.5	tolerance	ASME Y14.5	projection	MM	product family	MEG-Arroy
lfr	ecn no	dr	date	tolerances unless otherwise specified				title	4mm RECPT. ASSY
S				angles	X +.3			8 X 30 = 240POS.	
				or +.2"	XX +.0			sheet 2 of 3	size
					XXX +.050	scale	1:1	74217	A4
		dr	D WAUGHEN	11.12.97				CUSTOMER Drawing	
		enfr	TELMKE	11.12.97					
		chr	TELMKE	11.12.97					
		apdd	TELMKE	11.12.97					
sheet index	revision								



PRODUCT NUMBER	NOTES	CONTACT PLATING	SOLDER BALL	CAP STYLE
74217-001		15u" (.38um) Au OVER Ni	SnPb STANDARD	STANDARD
74217-001LF	5 6		SnAgCu LEAD FREE STANDARD	STANDARD
74217-091		15u" (.38um) GXT OVER Ni	SnPb STANDARD	STANDARD
74217-091LF	5 6		SnAgCu LEAD FREE STANDARD	STANDARD
74217-093		15u" (.38um) GXT OVER Ni	SnPb SPECIAL WITH VENT HOLES	SPECIAL WITH VENT HOLES
74217-093LF	5 6		SnAgCu LEAD FREE SPECIAL WITH VENT HOLES	SPECIAL WITH VENT HOLES
74217-093BF	8		SnPb SPECIAL WITH VENT HOLES	SPECIAL WITH VENT HOLES
74217-093BLF	5 6 8	15u" (.38um) GXT OVER Ni	SnAgCu LEAD FREE SPECIAL WITH VENT HOLES	SPECIAL WITH VENT HOLES
74217-101		30u" (.76um) Au OVER Ni	SnPb STANDARD	STANDARD
74217-101LF	5 6		SnAgCu LEAD FREE STANDARD	STANDARD
74217-191		30u" (.76um) GXT OVER Ni	SnPb STANDARD	STANDARD
74217-191LF	5 6		SnAgCu LEAD FREE STANDARD	STANDARD
74217-201		SEE NOTE 4.	SnPb STANDARD	STANDARD
74217-201LF	5 6		SnAgCu LEAD FREE STANDARD	STANDARD
74217-291		SEE NOTE 4.	SnPb STANDARD	STANDARD
74217-291LF	5 6		SnAgCu LEAD FREE STANDARD	STANDARD

NOTES:

1. MAT'L:

HOUSING: LCP
CONTACT: COPPER ALLOY

PLATING

CONTACT: (SEE TABLE ON SHEET1)
SOLDER BALL: (SEE TABLE ON SHEET1)
EUTECTIC SnPb OR LEAD FREE
95.5Sn/44g/0.5Cu

2. SOLDER BALLS WILL NOT BE PERFECT SPHERICAL SHAPE DUE TO REFLOW ATTACHMENT.

3. MATED HEIGHT EFFECTED BY CUSTOMER'S PCB PAD SIZE, PLATING, SOLDER REFLOW PROFILE, & SOLDER PASTE.

4. PLATING FOR -2XX SERIES DASH NOS. MEETS THE REQUIREMENTS OF CENTRAL OFFICE ENVIRONMENT, (25 YEAR LIFE EXPECTANCY).

5. FOR PROPER APPLICATION FOLLOW FCI APPLICATION SPECIFICATION GS-20-033 LEAD FREE SOLDER BALLS WILL NOT SOLDER PROPERLY IN A LEADED SOLDER PROCESS DUE TO A HIGHER REFLOW TEMPERATURE. LEAD FREE PRODUCT IS THEREFORE NOT BACKWARDS COMPATIBLE WITH LEADED OR SOME SOLDERING APPLICATIONS. REFERENCE FCI APPLICATION SPECIFICATION

6. THIS PRODUCT MEETS EUROPEAN UNION DIRECTIVES AND OTHER COUNTRY REGULATIONS AS DESCRIBED IN GS-47-0004 PRODUCT MEETING THIS DIRECTIVE IS IDENTIFIED IN THE LOT CODE NUMBER MARKED ON EACH PART BY HAVING AN "X" IN THE SEVENTH CHARACTER POSITION

7. VISIBLE KNT LINES ANYWHERE ON THE FLOOR OF THE HOUSING ARE PERMITTED. OPEN KNT LINES ANYWHERE ARE NOT PERMITTED.

8. FOR THESE DASH NUMBERS, PRODUCT IS BERYLLIUM FREE.

mat'l code	SEE NOTE 1	surface	tolerance	projection	product family
lit	ecn no	dr	date	ASME Y14.5	ASME Y14.5
S				tolerances unless otherwise specified	
		angles	X *3	MM	
		or 42°	XX *0	SCALE 1:1	
		dr	DWAUGHEN 11.12.97		
		engr	TLEMKE 11.12.97		
		chr	TLEMKE 11.12.97		
		appd	TLEMKE 11.12.97		
sheet	revision				
index	sheet				



dwg no 74217
sheet 3 of 3
4mm RECPT. ASSY
8 X 30 = 24POS.
CUSTOMER Drawing
A4