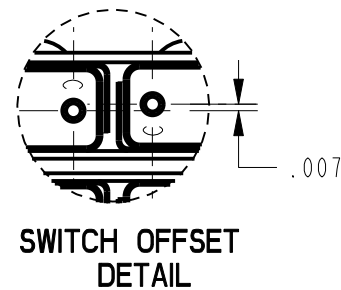


CATALOG LISTING

64AT44-1



NOTES

- 1 - UNIT INCLUDES "SX" TYPE BASIC SWITCH (4)
- 2 - SWITCHES DO NOT NECESSARILY OPERATE SIMULTANEOUSLY
- 3 - TERMINAL DESIGNATION MARKED ON BOTH SIDES OF UNIT
- 4 - DULL FINISH ON LEVER AND BUSHING
- 5 - HARDWARE FURNISHED ASSEMBLED WITH SWITCH OR IN PACKET
15PA313-AT PER MIL-PRF-8805
- 6 - REPLACEMENT MOUNTING HARDWARE PACKET 15PA313-AT

THIRD ANGLE PROJECTION

FILE	FULL
1	1
2	2
3	3
4	4
5	5
6	6
7	7
8	8
9	9
10	10
11	11
12	12
13	13
14	14
15	15
16	16
17	17
18	18
19	19
20	20
21	21
22	22
23	23
24	24
25	25
26	26
27	27
28	28
29	29
30	30
31	31
32	32
33	33
34	34
35	35
36	36
37	37
38	38
39	39
40	40
41	41
42	42
43	43
44	44
45	45
46	46
47	47
48	48
49	49
50	50
51	51
52	52
53	53
54	54
55	55
56	56
57	57
58	58
59	59
60	60
61	61
62	62
63	63
64	64
65	65
66	66
67	67
68	68
69	69
70	70
71	71
72	72
73	73
74	74
75	75
76	76
77	77
78	78
79	79
80	80
81	81
82	82
83	83
84	84
85	85
86	86
87	87
88	88
89	89
90	90
91	91
92	92
93	93
94	94
95	95
96	96
97	97
98	98
99	99
100	100

DO NOT SCALE PRINT

UNLESS OTHERWISE SPECIFIED
TOLERANCES ARE

ONE PLACE	(.0)	$\pm .030$
TWO PLACES	(.01)	$\pm .005$

TWO PLACE	(.00)	$\pm .015$
THREE PLACE	(.000)	$\pm .005$

ANGLES

WEIGHT

DETAIL RATING CHART

[illegible]

ANSI Y14.5M-1982 APPLIES

Mouser Electronics

Authorized Distributor

Click to View Pricing, Inventory, Delivery & Lifecycle Information:

[Honeywell:](#)

[64AT44-1](#)