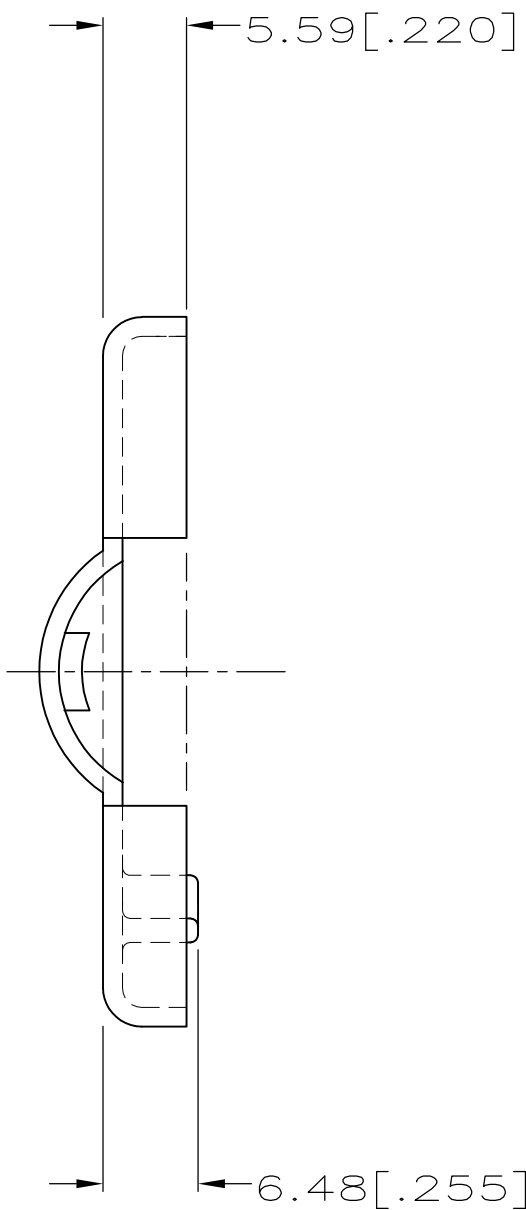
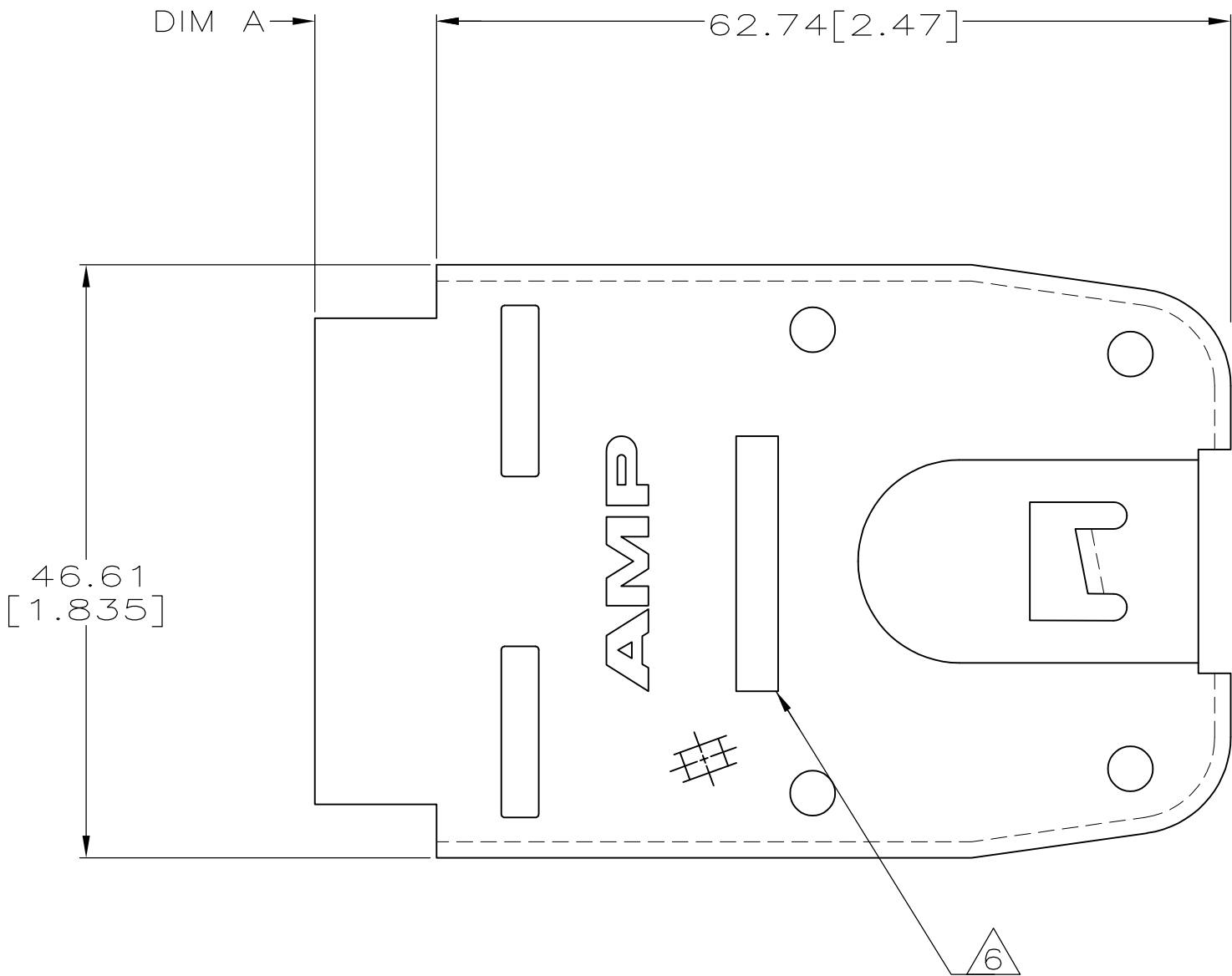


LOC		DIST		REVISIONS					
AA		28		P	LTR	DESCRIPTION	DATE	DWN	APVD
			F	ECO-13-012930			13AUG2013	JM	MS

1. ALL DIMENSIONS ARE MAXIMUM.
2. STRAIN RELIEF TO BE ASSEMBLED WITH
Ø3.18[.125] X 12.7[.500] LONG SEMI-TUBULAR
STEEL RIVETS FURNISHED BY CUSTOMER.
3. ASSEMBLY REQUIRES ONE PIECE OF EITHER:
A) 555891-1 AND 555890-1 OR 555890-3
OR
B) 555891-2 AND 555890-2 OR 555890-4.
4. RECOMMEND ARMOUR CABLE TO ACCOMMODATE
UP TO 8 INSULATED WIRES: 14.3[9/16] OR
12.7[1/2] INSIDE DIAMETER APPLIANCE
FLEX METAL CONDUIT.
5. STRAIN RELIEF ASSEMBLY CAN BE USED WITH
POWER CONNECTOR HOUSING 555930 AND
POWER CONNECTOR BASE 555929 OR LINE
CONNECTOR HOUSING 555892 AND LINE
CONNECTOR COVER 555894.
- △ STRAIN RELIEF IS MARKED AS FOLLOWS:
555890-1 IS MARKED 90 1/2
555890-2 IS MARKED 90 9/16
555890-3 IS MARKED 90 1/2
555890-4 IS MARKED 90 9/16



OBSOLETE	0.64[.025]	14.3[9/16] CONDUIT	555890-4
	0.64[.025]	12.7[1/2] CONDUIT	555890-3
	9.91[.390]	14.3[9/16] CONDUIT	555890-2
	9.91[.390]	12.7[1/2] CONDUIT	555890-1
	DIM A	DESCRIPTION	PART NO.

THIS DRAWING IS A CONTROLLED DOCUMENT FOR AMP INCORPORATED.
IT IS SUBJECT TO CHANGE AND THE CONTROLLING ENGINEERING
ORGANIZATION SHOULD BE CONTACTED FOR THE LATEST REVISION.

DIMENSIONS:
mm [INCHES]

MATERIAL

-

TOLERANCES UNLESS
OTHERWISE SPECIFIED:

0 PLC ±-

1 PLC ±-

2 PLC ±-

3 PLC ±-

4 PLC ±-

ANGLES ±-

FINISH -

DWN
D. STRAUSSER
09JUL96

CHK
N. JONES
09JUL96

APVD
R. BOSSI
12JUL96

NAME

PRODUCT SPEC

APPLICATION SPEC

WEIGHT

CUSTOMER DRAWING

AMP Incorporated
Harrisburg, PA 17105-3608

STRAIN RELIEF,FLEXIBLE
CONDUIT,RIGHT

SIZE
A2

CAGE CODE
00779

DRAWING NO
C-555890

SCALE
2:1

SHEET
1 OF 1

REV
F