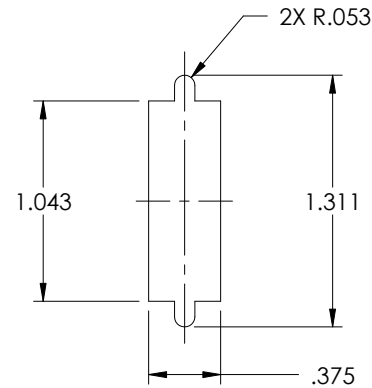
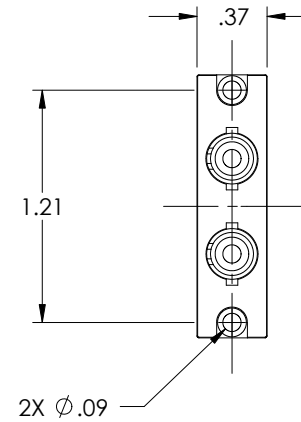
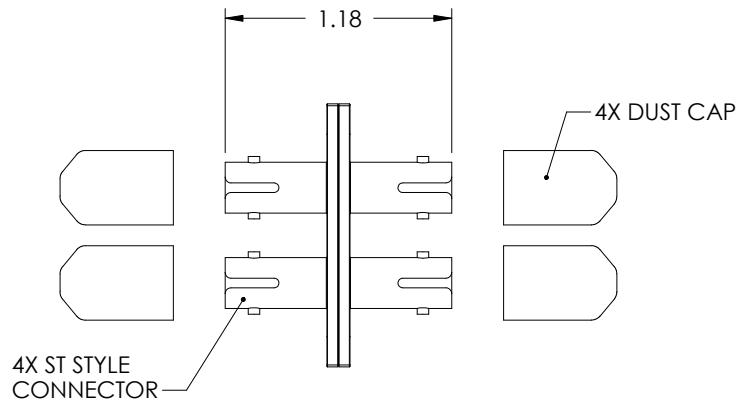
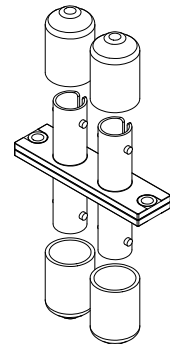


THE INFORMATION CONTAINED IN THIS DRAWING IS THE SOLE PROPERTY OF L-COM, INC. ANY REPRODUCTION IN PART OR WHOLE WITHOUT THE WRITTEN PERMISSION OF L-COM, INC. IS PROHIBITED.

REVISIONS			
REV	DESCRIPTION	DATE	APPROVED
A	RELEASED FOR PRODUCTION	12/20/00	MCCORMICK
B	ECN#1605 ADDED COMPONENT SPECIFICATION TABLE	12/04/03	MCCORMICK
.	.	.	.
.	.	.	.



RECOMMENDED  
PANEL HOLE



Component Specifications	
Material	
Sleeve	Phosphorus Bronze
Body	Zinc Alloy
Dust cap	PVC
Rivet	Copper
Finish	
Body	Nickel
Rivet	Nickel

CS-118

UNLESS OTHERWISE SPECIFIED,  
DIMENSIONS ARE IN INCHES  
TOLERANCES ARE:  
.X ±.1  
.XX ±.05  
.XXX ±.005  
CABLE LENGTH TOLERANCE  
<300" ±5% >300" ±2%

APPROVALS	DATE
DRAWN BY C.McCORMICK	12/20/00
CHECKED BY DFP	01/12/01
APPROVED BY R.CARRICK	01/12/01

CONFIGURATION DETAILS OF  
UNDIMENSIONED FEATURES  
MAY VARY

<b>L-com</b> CONNECTIVITY PRODUCTS		45 BEECHWOOD DRIVE NORTH ANDOVER, MA 01845	
PRODUCT DESCRIPTION			
ST TO ST DUPLEX ADAPTOR			
DRAWING TITLE			
OUTLINE DRAWING			
SIZE <b>A</b>	FSCM NO. <b>43321</b>	DWG. NO. <b>FOA-401-OD1</b>	REV. <b>B</b>
SCALE: NONE		CAD FILE: FOA-401-OD1.SLDDRW	SHEET 1 OF 1