



Our Focus is in Plastics

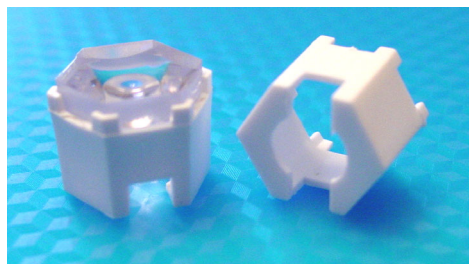
Polymer Optics Ltd.

6 Kiln Ride, Wokingham,
Berks., RG40 3JL, England
Tel/Fax: +44 (0) 1189 893341
www.polymer-optics.co.uk

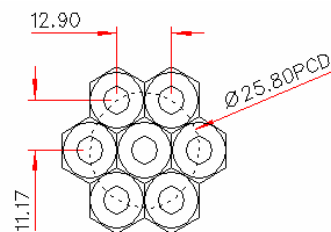
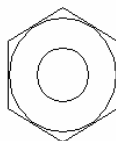
25 Degree LED Collimator Lens - Part No. 124



- Designed for LUXEON® I, III and K2 LED's
- High light collection efficiency of >85%
- Suitable for all LUXEON® "Lambertian" and "Bat-wing" LED designs
- Precision moulded in optical grade Polycarbonate for thermal stability and system durability
- Part of the Polymer Optics "Modular LED Optics"® range



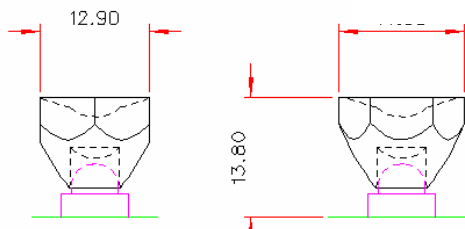
Typical dimensional tolerances
to $\pm 0.2\text{mm}$



NESTED COMPONENTS ON 25,8MM PCD
(shown half size)



Polymer Optics Limited is a certified
Lumileds-Future Partner



Polymer Optics "Modular LED Optics"® design, based on a hexagonal format, allows maximum packing density and assembly flexibility

Holder (Part No. 121) available for mounting optics onto LUXEON® I Star or LUXEON® Emitter PCB's

Star Holder (Part No. 128) available for LUXEON® III Star formats only.

K2 Holder (Part No. 151) available for LUXEON® K2 LED range.

Please refer to POL's "LUXEON® LED Optic Selection Table" to determine your optimum product configuration.

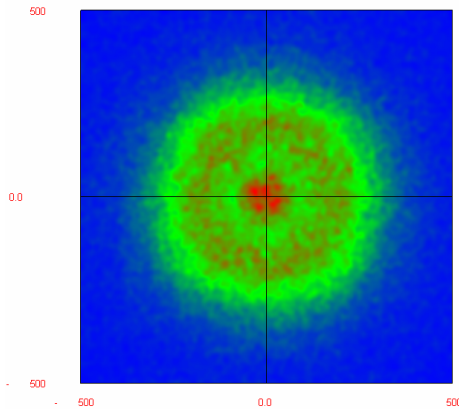


Our Focus is in Plastics

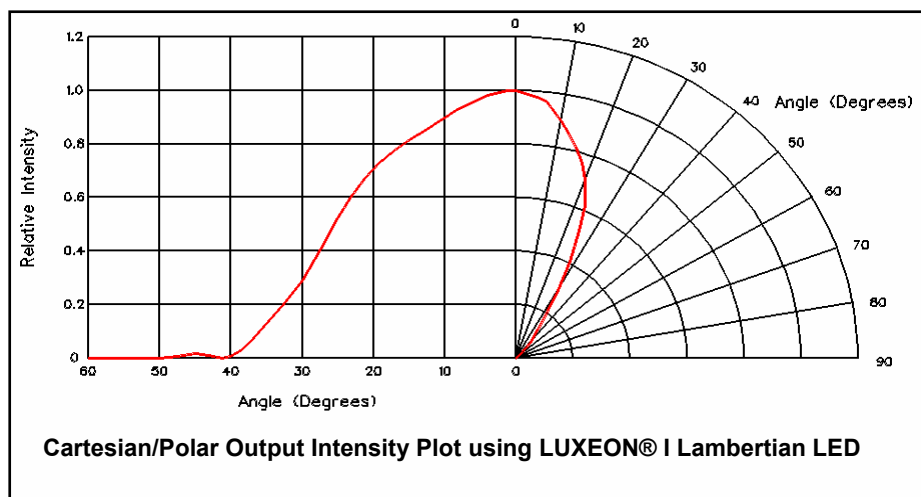
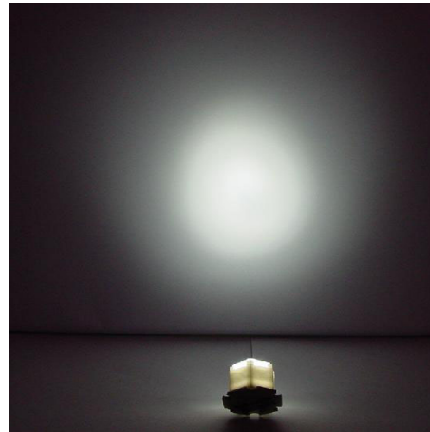
Polymer Optics Ltd.

6 Kiln Ride, Wokingham,
Berks., RG40 3JL, England
Tel/Fax: +44 (0) 1189 893341
www.polymer-optics.co.uk

25 Degree LED Collimator Lens - Part No. 124



Raytrace Simulation of Typical Beam at
1m with 1W White LED



Typical illuminance values using 25 lumen white LUXEON® I Emitter = 6cd/lumen			
Range	0.5m	1m	2m
Illuminance	600 lux	150 lux	37.5 lux

Performance values given are typical values and will vary dependant on LED binning, colour and drive profile

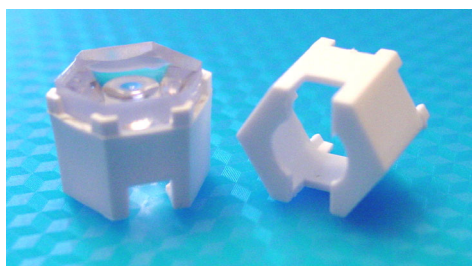


Our Focus is in Plastics

Polymer Optics Ltd.

6 Kiln Ride, Wokingham,
Berks., RG40 3JL, England
Tel/Fax: +44 (0) 1189 893341
www.polymer-optics.co.uk

Standard Lens Holder - Part No. 121

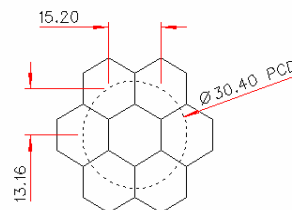
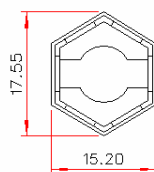
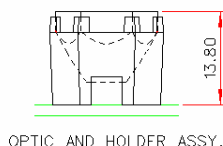
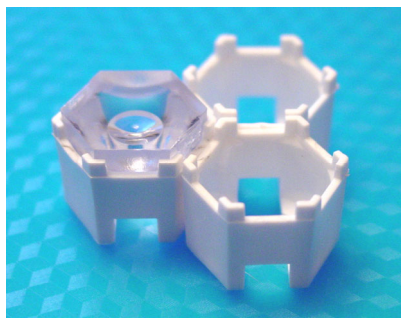


- Designed for use with Polymer Optics “Modular LED Optics”® and other custom Polymer Optics designs
- Designed for LUXEON® I Star and LUXEON® I, III, and V Emitter populated PCB's
- Simply mounts onto PCB and self-aligns to LUXEON® Emitter
- Precision moulded in optical grade Polycarbonate for thermal stability and system durability
- Part of the Polymer Optics “Modular LED Optics”® range

Polymer Optics “Modular LED Optics”® design, based on a hexagonal format, allows maximum packing density and assembly flexibility

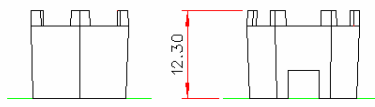
Alternative Star Holder (Part No. 128) available for LUXEON® I and III Star formats which have different mounting heights

K2 Holder available for LUXEON® K2 Emitter



NESTED COMPONENTS ON 30.4MM PCD

Typical dimensional tolerances to $\pm 0.2\text{mm}$



Polymer Optics Limited is a certified
Lumileds-Future Partner



121 Holder and 120 Optic mounted on
LUXEON® I Star PCB

