

DESIGNED & DIMENSIONED
IN MILLIMETERS[INCHES]

MCX-J-P-X-ST-SM1-XX ☐

GENDER
-J: JACK

TYPE
-P: PCB

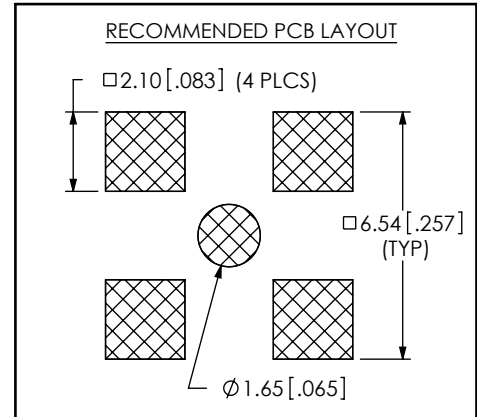
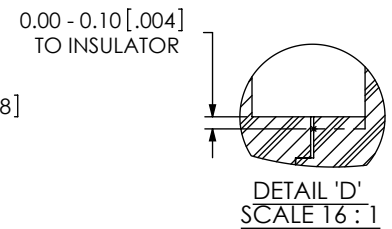
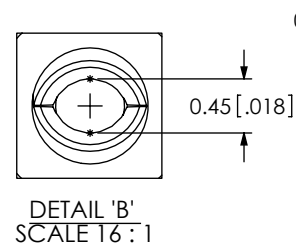
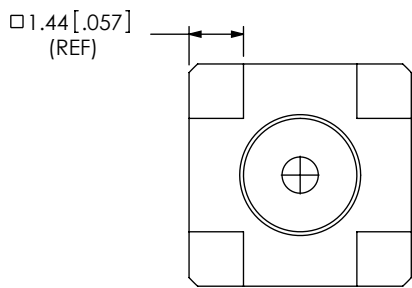
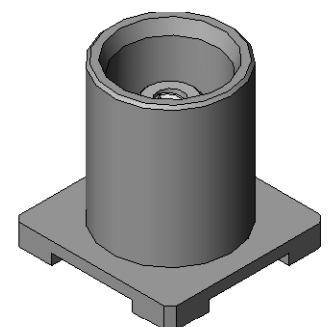
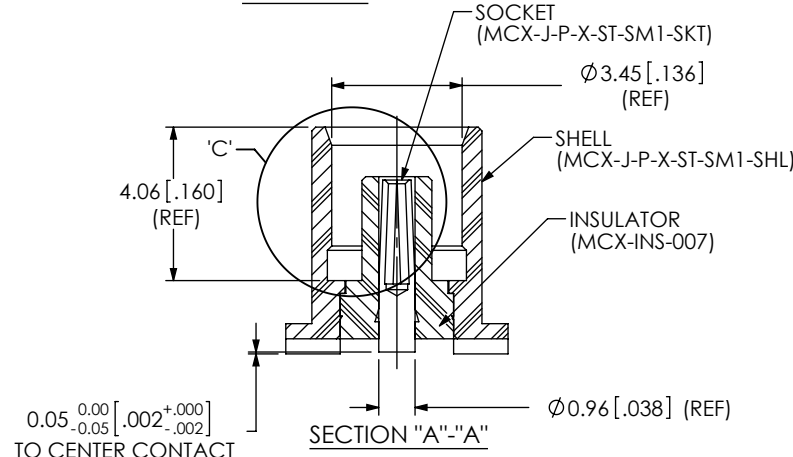
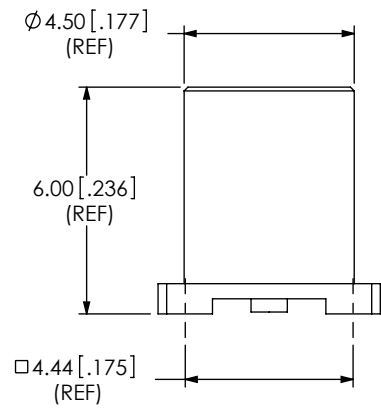
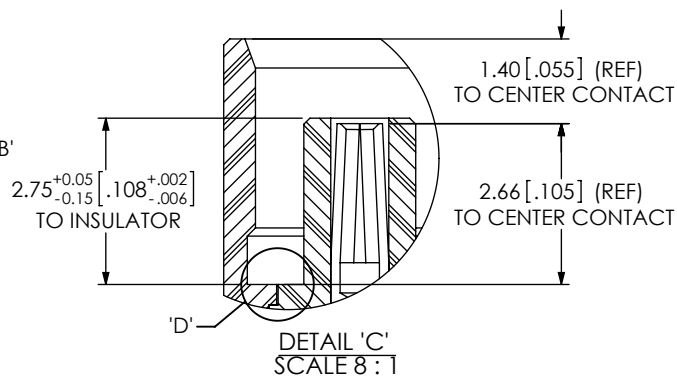
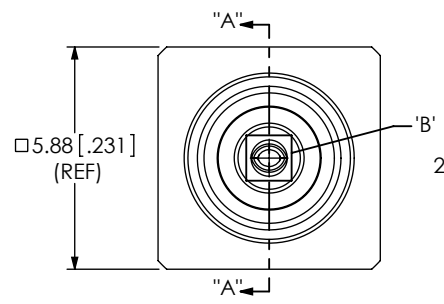
PLATING SPECIFICATION
-H: HEAVY GOLD
(SEE TABLE 1)

OPTION

-TR: TAPE & REEL
(LEAVE BLANK FOR NO
TAPE AND REEL)

TERMINATION
-SM1: SURFACE MOUNT

ORIENTATION
-ST: STRAIGHT



NOTES:

1. REPRESENTS A CRITICAL DIMENSION.
2. PUSHOUT FORCE FOR INSULATOR: 20 N[4.5 LB] MIN.
3. PUSHOUT FORCE FOR CENTER CONTACT: 10 N[2.25 LB] MIN.
4. PARTS TO BE PACKAGED IN TRAYS; IF QUANTITY IS LESS THAN HALF TRAY, PARTS TO BE PACKAGED IN COHESIVE FOAM.
5. RoHS COMPLIANT.

F:\DWG\MISC\MKTG\MCX-J-P-X-ST-SM1-XX-MKT.SLDDRW

UNLESS OTHERWISE SPECIFIED,
DIMENSIONS ARE IN MILLIMETERS.
TOLERANCES ARE:
DECIMALS ANGLES
.X: ± 0.3 [0.1] 2°
.XX: ± 0.13 [0.05]
.XXX: ± 0.051 [0.020]

PROPRIETARY NOTE
THIS DOCUMENT CONTAINS INFORMATION
CONFIDENTIAL AND PROPRIETARY TO
SAMTEC, INC. AND SHALL NOT BE REPRODUCED
OR TRANSFERRED TO OTHER DOCUMENTS OR
DISCLOSED TO OTHERS OR USED FOR ANY
PURPOSE OTHER THAN THAT WHICH IT WAS
OBTAINED WITHOUT THE EXPRESSED WRITTEN
CONSENT OF SAMTEC, INC.

samtec

520 PARK EAST BLVD., NEW ALBANY, IN 47150
PHONE: 812-944-6733 FAX: 812-948-5047
e-Mail: info@SAMTEC.com code: 55322

MATERIAL: DO NOT SCALE DRAWING SHEET SCALE: 5:1
SEE TABLE 1

DESCRIPTION:
MCX STRAIGHT, SMT JACK- 50 OHM

DWG. NO.
MCX-J-P-X-ST-SM1-XX ☐

BY: R MUSSER 02/06/2008 SHEET 1 OF 1

TABLE 1: MATERIAL

SAMTEC PART NUMBER	ITEM	MATERIAL	PLATING - (REFERENCE)
MCX-J-P-X-ST-SM1-SHL	SHELL	BRASS C3604B	0.00013[.000005] GOLD OVER .00127[.000050] NICKEL
MCX-INS-007	INSULATOR	PTFE TEFLON (WHITE)	N/A
MCX-J-P-X-ST-SM1-SKT	SOCKET	BeCu C17300	0.00076[.000030] GOLD OVER .00127[.000050] NICKEL