

**Product number FA11902\_TINA3-W**

|                 |               |             |            |
|-----------------|---------------|-------------|------------|
| Family          | Tina3         | FWHM        | 37 degrees |
| Type            | Assembly      | Efficiency  | 92 %       |
| LED             | XM-L          | cd/Im       | 1.370      |
| Color           | White         | Gerber File | Available  |
| Diameter        | 16.1 mm       |             |            |
| Height          | 7.3 mm        |             |            |
| Style           | Round         |             |            |
| Optic Material  | PMMA          |             |            |
| Holder Material | PC            |             |            |
| Fastening       | Pin, tape     |             |            |
| Status          | On production |             |            |

**Product number FA11903\_TINA3-WW**

|                 |               |             |            |
|-----------------|---------------|-------------|------------|
| Family          | Tina3         | FWHM        | 56 degrees |
| Type            | Assembly      | Efficiency  | 89 %       |
| LED             | XM-L          | cd/Im       | 0.850      |
| Color           | White         | Gerber File | Available  |
| Diameter        | 16.1 mm       |             |            |
| Height          | 7.1 mm        |             |            |
| Style           | Round         |             |            |
| Optic Material  | PMMA          |             |            |
| Holder Material | PC            |             |            |
| Fastening       | Pin, tape     |             |            |
| Status          | On production |             |            |

**Product number FA11904\_TINA3-WWW**

|                 |               |             |            |
|-----------------|---------------|-------------|------------|
| Family          | Tina3         | FWHM        | 70 degrees |
| Type            | Assembly      | Efficiency  | 89 %       |
| LED             | XM-L          | cd/Im       | 0.600      |
| Color           | White         | Gerber File | Available  |
| Diameter        | 16.1 mm       |             |            |
| Height          | 7 mm          |             |            |
| Style           | Round         |             |            |
| Optic Material  | PMMA          |             |            |
| Holder Material | PC            |             |            |
| Fastening       | Pin, tape     |             |            |
| Status          | On production |             |            |

**NOTE: The typical divergence will be changed by different color, chip size and chip position tolerance. The typical total divergence is the full angle measured where the luminous intensity is half of the peak value.**



## PRODUCT DATASHEET

### Tina3 series

last update 13/9/2013



#### GENERAL INFORMATION

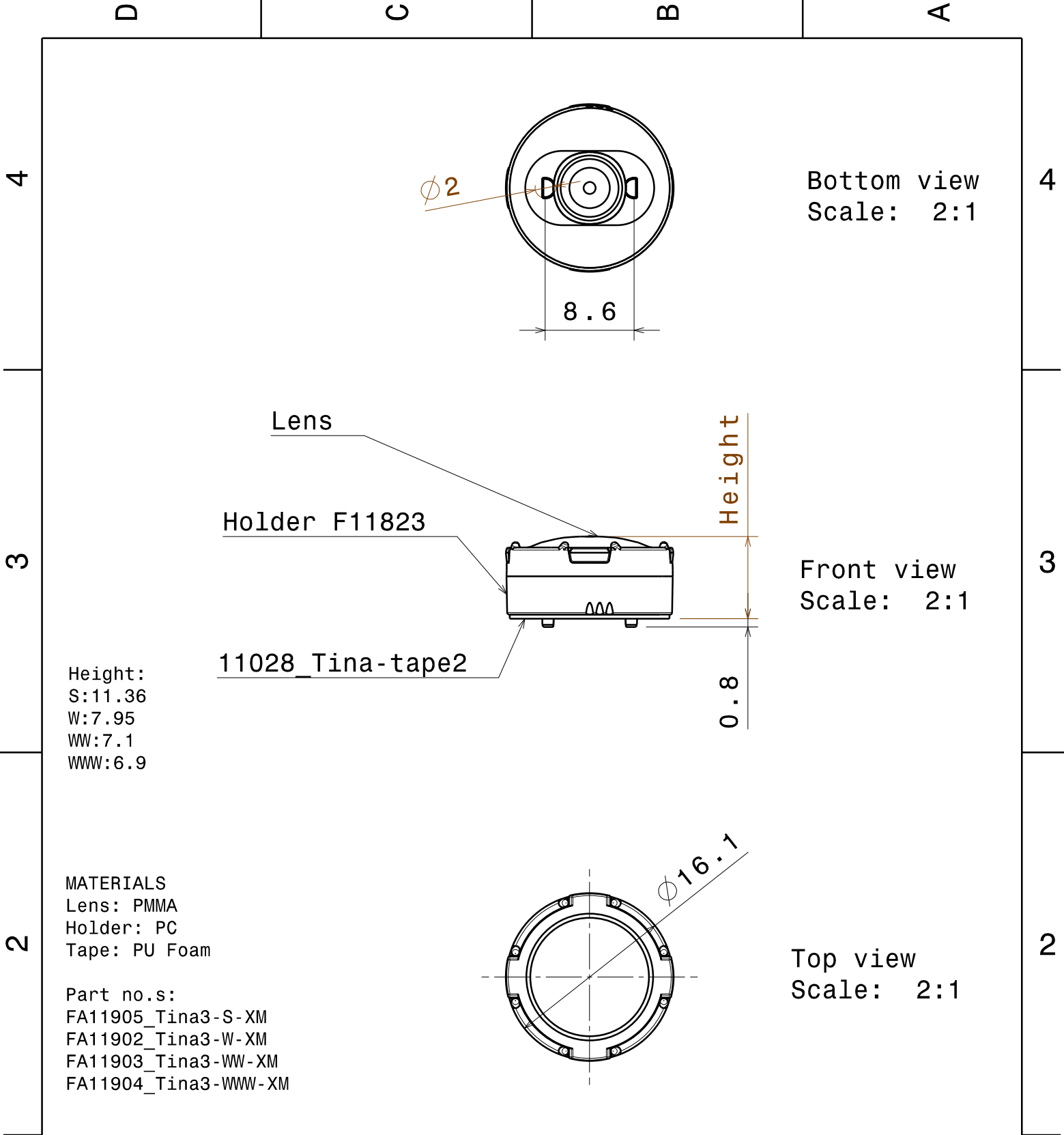
- Product series especially designed & optimized for XM-L series of LEDs.
- Special care taken to make light distribution as uniform as possible.
- Lens material optical grade PMMA with high UV and temperature resistance. Allows use of high current and temperature conditions.

Please find more information about used material from below:

[http://ledil.fi/sites/default/files/Documents/Technical/Material/PMMA%20N%20UL94\\_Yellow%20Card.pdf](http://ledil.fi/sites/default/files/Documents/Technical/Material/PMMA%20N%20UL94_Yellow%20Card.pdf)

<http://ledil.fi/sites/default/files/Documents/Technical/Material/PMMA%20N%20PLEXIGLAS-Datasheet.pdf>

- Optic holder molded by high quality PC material (120 dergees of Celcius / 248 degrees of Fahrenheit).



MATERIALS  
Lens: PMMA  
Holder: PC  
Tape: PU Foam

Part no.s:  
FA11905\_Tina3-S-XM  
FA11902\_Tina3-W-XM  
FA11903\_Tina3-WW-XM  
FA11904\_Tina3-WWW-XM

This drawing is our property.  
It can't be reproduced  
or communicated without  
our written agreement.



Ledil Oy  
Tehdaskatu 13  
FIN-24100 SALO  
Finland

DRAWING TITLE

Datasheet Tina3-series Assy XM

DRAWN BY  
ah

DATE  
18.05.2011

CHECKED BY  
ah

DATE  
18.5.2011

DESIGNED BY  
pv

DATE  
13.10.2010

SIZE  
A4

DRAWING NUMBER

-

REV  
1

SCALE

2:1

WEIGHT (g)

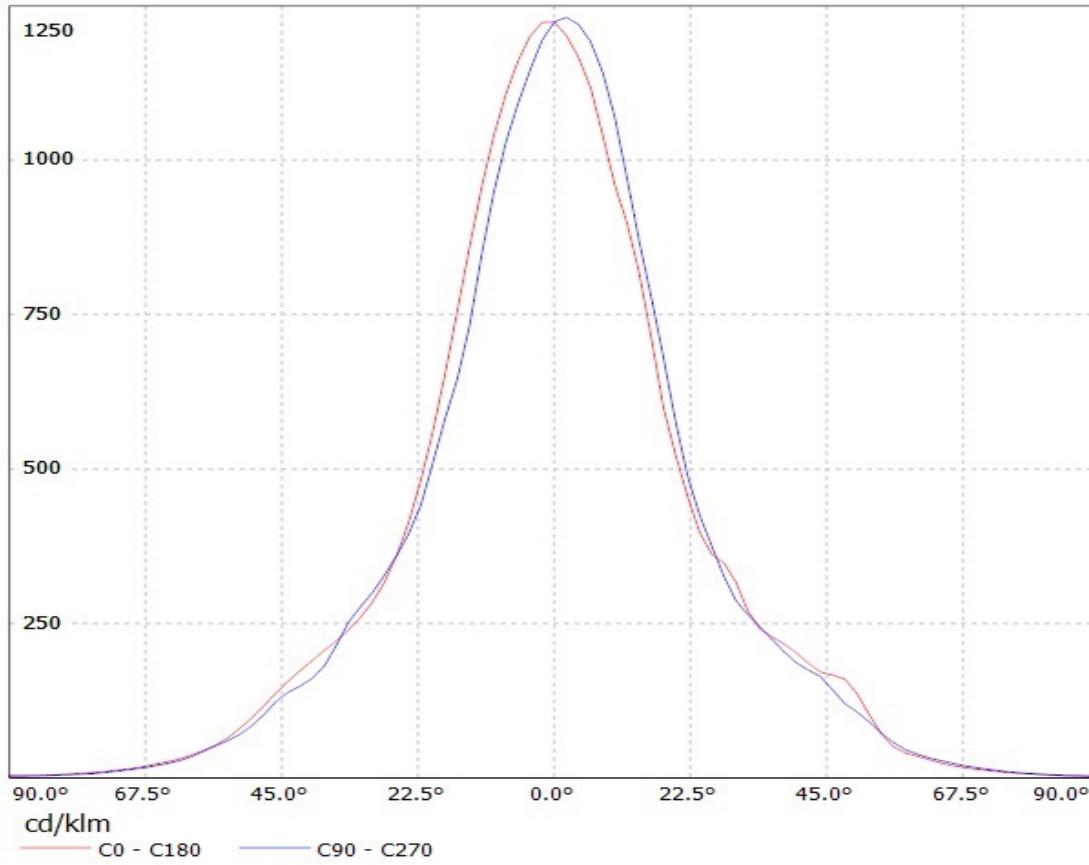
-

SHEET

1 / 1

# Ledil Oy FA11902\_Tina3-W-XM FA11902\_Tina3-W-XM LOR=92% / LDC (Linear)

Luminaire: Ledil Oy FA11902\_Tina3-W-XM FA11902\_Tina3-W-XM LOR=92%  
Lamps: 1 x Cree XM-L 250mA 97lm

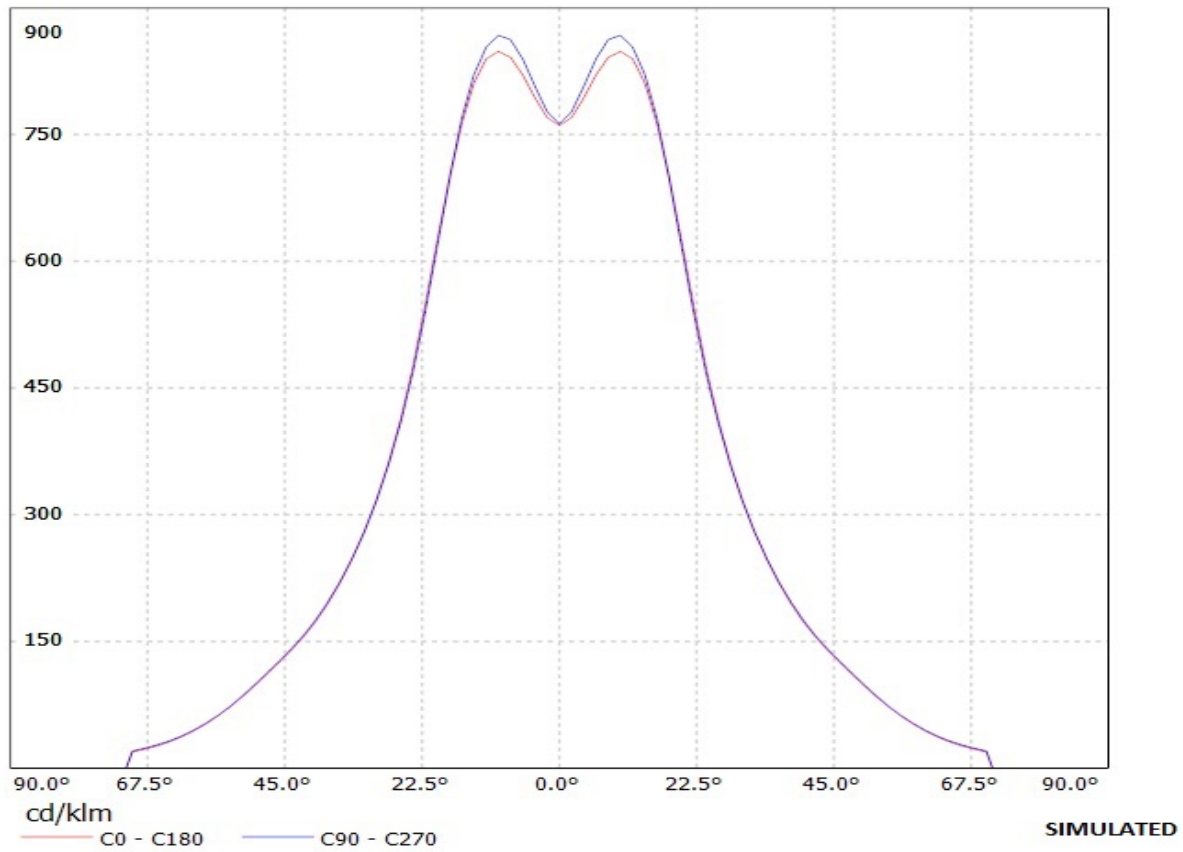


SIMULATED

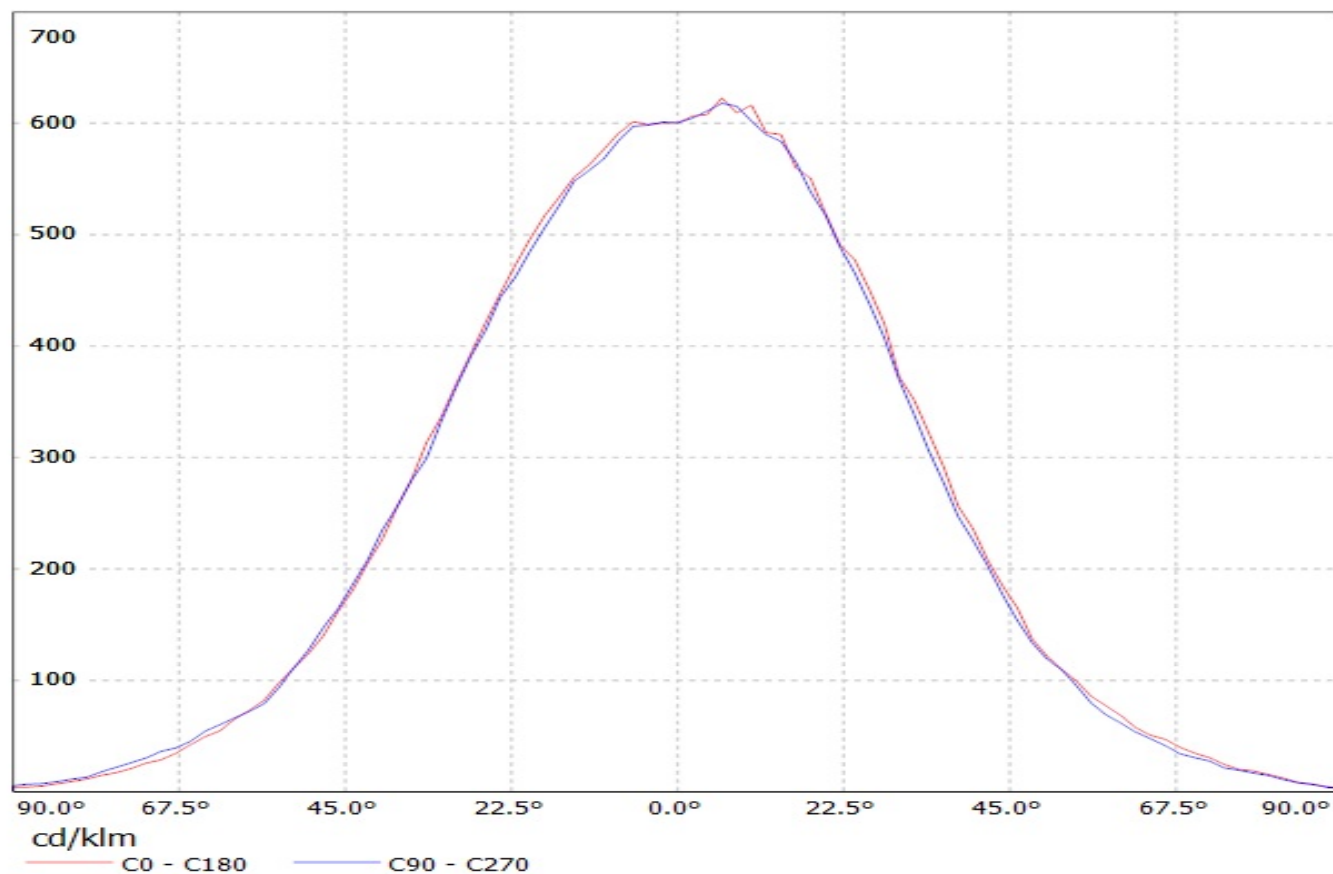
# Ledil Oy FA11903\_Tina3-WW-XM FA11903\_Tina3-WW-XM LOR=89% / LDC (Linear)

Luminaire: Ledil Oy FA11903\_Tina3-WW-XM FA11903\_Tina3-WW-XM LOR=89%

Lamps: 1 x Cree XM-L



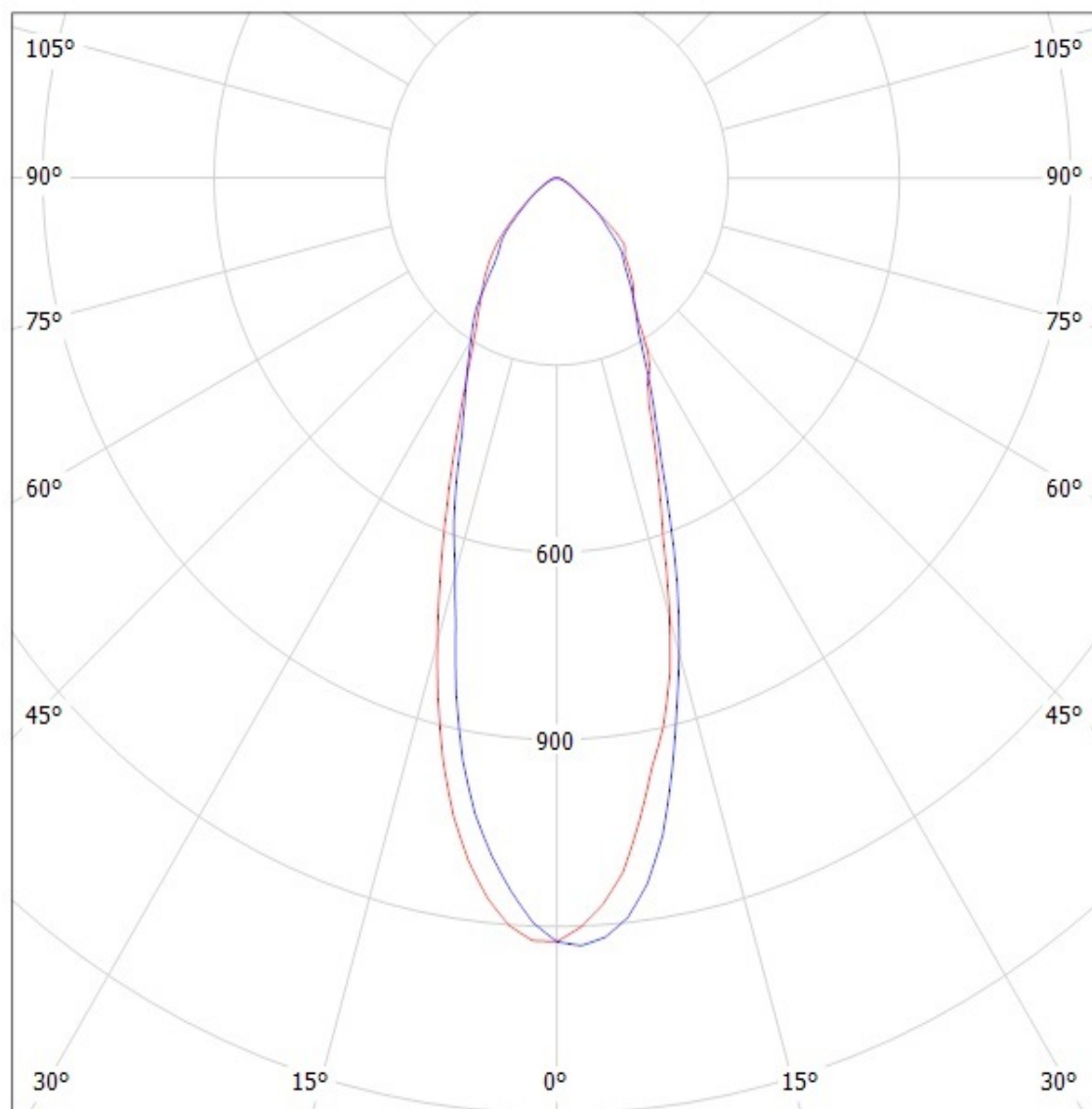
Luminaire: Ledil Oy FA11904\_TINA3-WWW (Cree XM-L 90lm @ 250mA) Efficiency=89%  
Lamps: 1 x Cree XM-L 90lm @ 250mA



## Ledil Oy FA11902\_Tina3-W-XM FA11902\_Tina3-W-XM LOR=92% / LDC (Polar)

Luminaire: Ledil Oy FA11902\_Tina3-W-XM FA11902\_Tina3-W-XM LOR=92%

Lamps: 1 x Cree XM-L 250mA 97lm



cd/klm

— C0 - C180

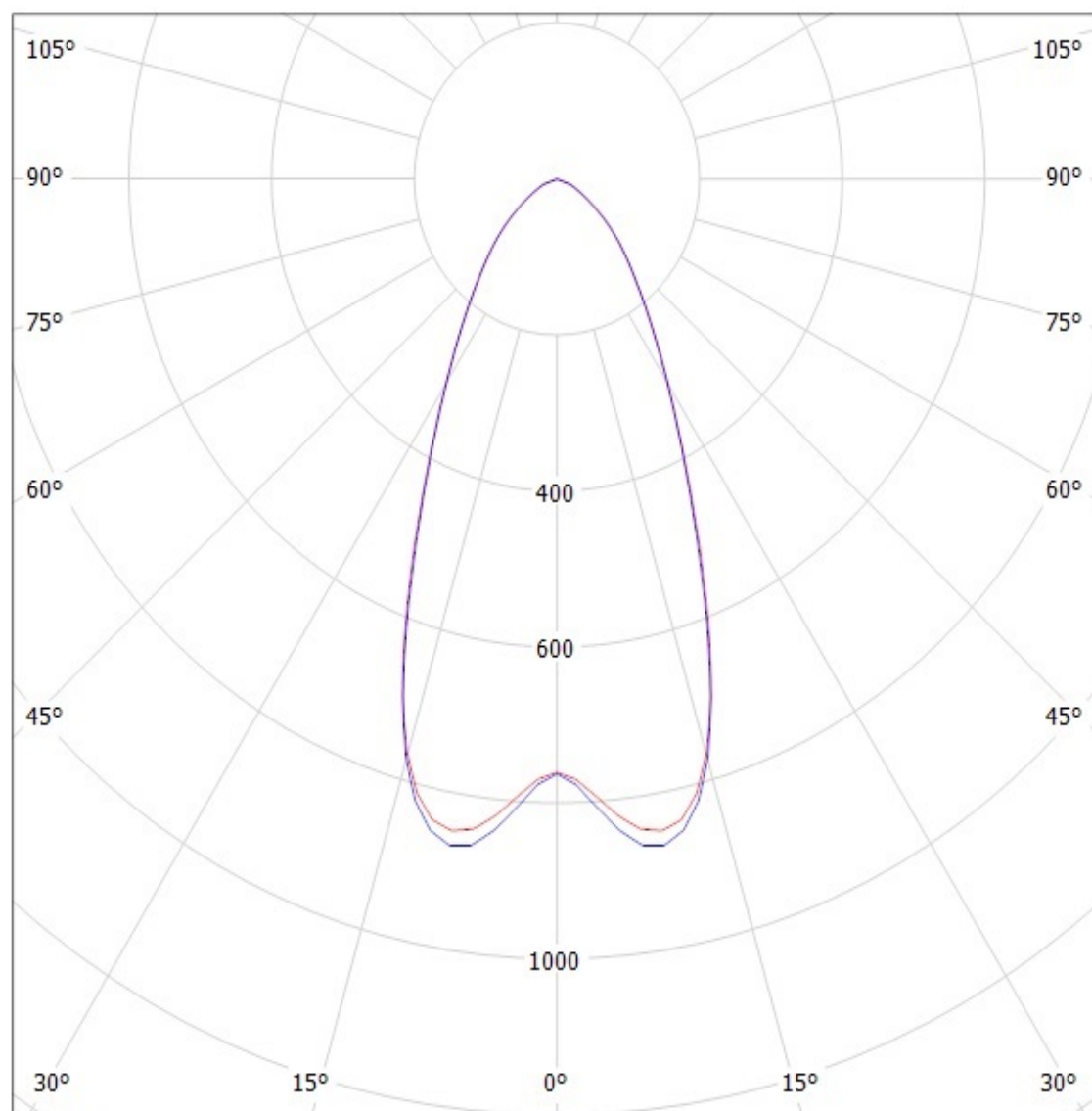
— C90 - C270

**SIMULATED**

# Ledil Oy FA11903\_Tina3-WW-XM FA11903\_Tina3-WW-XM LOR=89% / LDC (Polar)

Luminaire: Ledil Oy FA11903\_Tina3-WW-XM FA11903\_Tina3-WW-XM LOR=89%

Lamps: 1 x Cree XM-L



cd/klm

— C0 - C180

— C90 - C270

**SIMULATED**



Luminaire: Ledil Oy FA11904\_TINA3-WWW (Cree XM-L 90lm @ 250mA) Efficiency=89%  
Lamps: 1 x Cree XM-L 90lm @ 250mA

