

# ELECTRICAL DATA

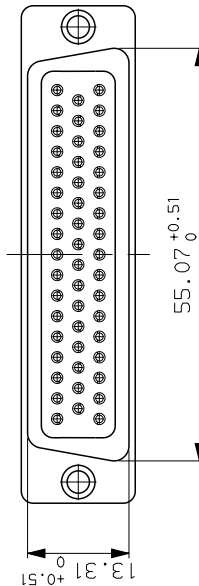
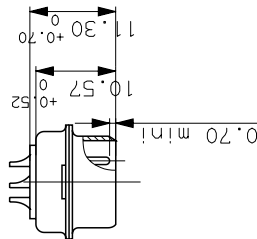
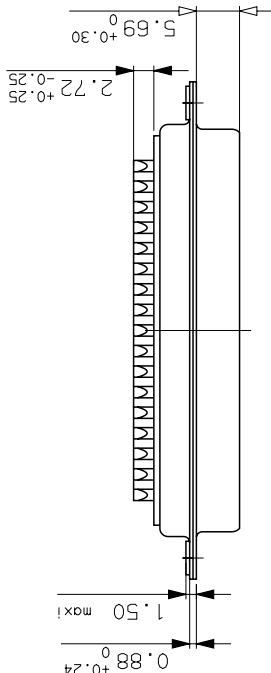
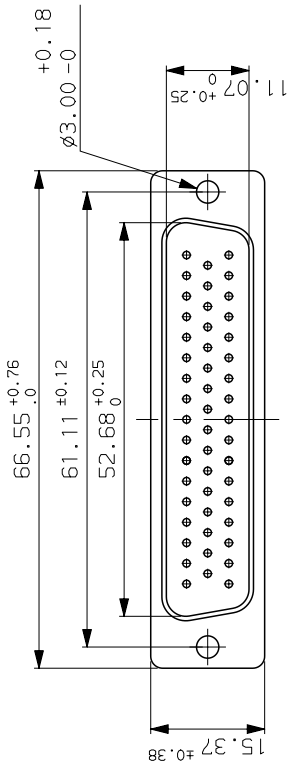
- I max 7.5A
- Contact resistance ≤55ma under 7.5 A
- Insulation resistance ≥5000MΩ
- TEST VOLTAGE
- contact/contact ≥1000V
- contact/ground ≥1200V



# MECHANICAL DATA

- Contact force ≥0.20N
- Retention force ≥40N
- Insertion force according to MIL-DTL-24308
- Withdrawal force according to MIL-DTL-24308
- Mechanical endurance :500 matings / unmatings
- Material shell steel ,cadmium
- Material insulator glass filled thermoplastic UL94V0
- Material contacts pin:brass.
- Finish on contact area gold 50µ inch min over nickel 30-150µinch min
- Finish on termination end tin-lead 100µinch min over nickel 30-180µinch min
- Solderability according to MIL-DTL-24308
- Shock according to MIL-DTL-24308
- Vibration according to MIL-DTL-24308

# ENVIRONMENTAL DATA

- Climatic category -55° / +125°/56
- Corrosion salt spray:48h



Part number		DDM50P052		
B	15/07/03	in notes replace DIN 41640 by MIL-DTL-24308 suppress dimple on front shell		
ISS	DATE	Latest modification by : M PESSON		
Designed by:		JARRY	date:4/01/97	Type of drawing: CLIENT
TITLE :		PIN CONNECTORS D SUBMINIATURE WITH SOLDER CONTACT		
SCALE: 1.5		SHEET 1/1		
				
FRAMATOME CONNECTORS FRANCE Rue Louis Breguet - Bp 05 72024 LE MANS Cedex Tel. 33 (16) 43.84.08.43		This document is the property of FRAMATOME CONNECTORS FRANCE It must not be reproduced or communicated without permission in writing from the owners		
FORMAT		SOURIAU DRG N°		PROJECT
A3		C01-8637-0474		M94D001