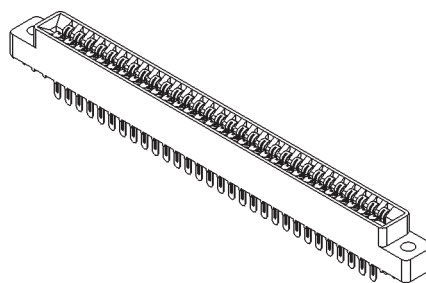




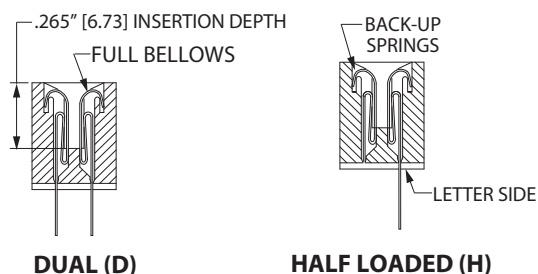
**.125" [3.18 mm] Contact Centers, .431" [10.95 mm] Insulator Height,
Dip Solder/Eyelet/Right Angle for .062" [1.57 mm] or .031" [0.79 mm] Mating PCB**

SPECIFICATIONS

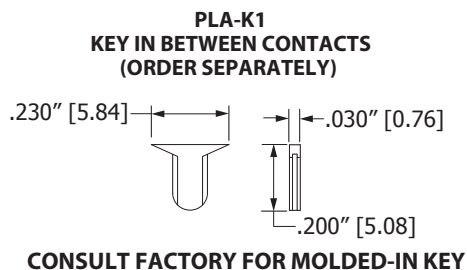
- Accommodates .062" \pm .008" [1.57 mm \pm 0.20 mm] PC board or .031" \pm .006" [0.79 mm \pm 0.15 mm] PC board
- Molded-in key available
- 3 Amps current rating for one contact energized
- 30 milli Ohms maximum at rated current
- UL Flammability Rating: 94V-0



READOUT

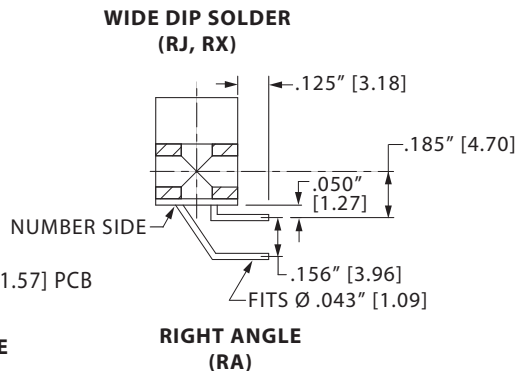
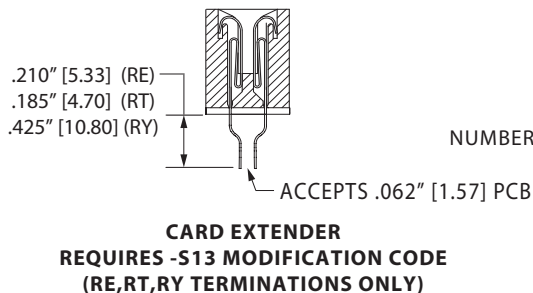
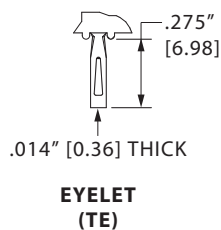
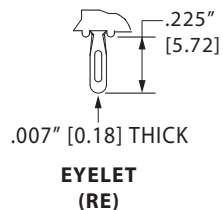


POLARIZING KEY

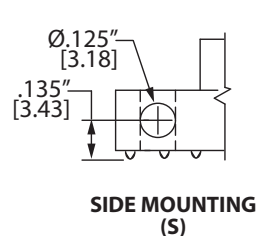
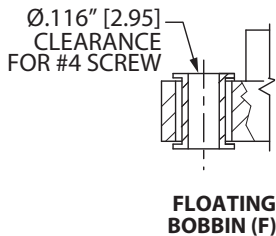
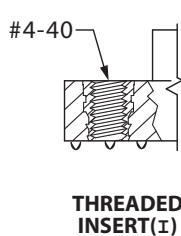
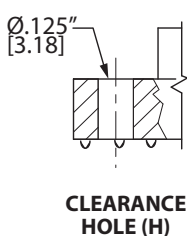


TERMINATION TYPE

EYELET ACCEPTS 3-#26 AWG



MOUNTING STYLE





**.125" [3.18 mm] Contact Centers, .431" [10.95 mm] Insulator Height,
Dip Solder/Eyelet/Right Angle for .062" [1.57 mm] or .031" [0.79 mm] Mating PCB**

PART NUMBER OPTIONS

E B A 43 D R E H - Sxxx

MATERIALS (INSULATOR/CONTACT)

- E = PBT/Phosphor Bronze (Standard)
- R = PPS/Phosphor Bronze
- G = PA9T/Phosphor Bronze
- H = PBT/Beryllium Copper
- A = PPS/Beryllium Copper
- J = PA9T/Beryllium Copper
- *F = PPS/Spinodal (Overall Gold Plating Only)
- Consult factory for special soldering guidelines.
- *C = PPS/Beryllium Nickel (Overall Gold Plating Only)
- *W = PEEK/Beryllium Nickel (Overall Gold Plating Only)
- *Consult factory for availability.
- Refer to Page 7 for Operating/Processing Temperatures

CONTACT FINISH - RoHS Compliant

All platings are Lead Free and have .000050" Nickel underplate

| Contact Surface | Termination |
|-------------------|--------------------------|
| B = .000010" Gold | .000100" Pure Tin, Matte |
| C = .000030" Gold | .000100" Pure Tin, Matte |
| G = .000010" Gold | .000005" Gold |
| Y = .000030" Gold | .000005" Gold |

| Contact Surface | Overall Plating |
|------------------------------|--------------------------|
| S = .000010" Gold | .000010" Gold |
| M = .000030" Gold | .000010" Gold |
| E = .000100" Pure Tin, Matte | .000100" Pure Tin, Matte |

CONTACT CENTERS

A = .125" [3.18 mm]

MODIFICATION CODE (Consult Factory)

OMIT FOR STANDARD

- S13 = Card Extender Accepts .062" [1.57 mm] PCB (RE, RT, RY Terminations Only)
- S734 = .031" ± .006" [0.79 mm ± 0.15 mm] Thick PCB

MOUNTING STYLE (Opposite Page)

- H = .125" [3.18 mm] Clearance Holes
- N = No Mounting
- S = Side Mounting
- I = Threaded Insert
- F = Floating Bobbin

TERMINATION TYPE (Opposite Page)

- RA = Right Angle
- RE = Eyelet (Standard)
- TE = Eyelet (Overall Plated Only)
- RT = .140" [3.56 mm] X .200" [5.08 mm] Dip Solder
- RY = .140" [3.56 mm] X .440" [11.19 mm] Dip Solder
- RX = .200" [5.08 mm] X .185" [4.70 mm] Dip Solder
- RJ = .250" [6.35 mm] X .165" [4.19 mm] Dip Solder

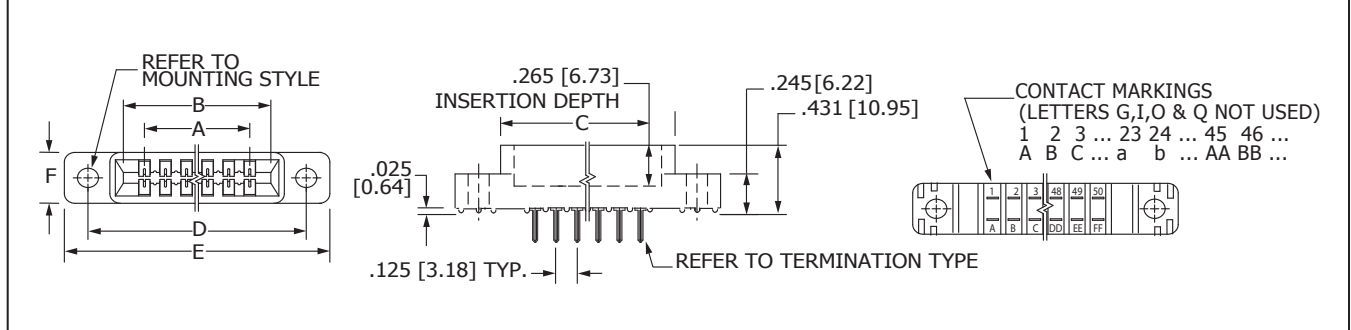
READOUT (Opposite Page)

- D = Dual
- H = Half Loaded

NUMBER OF CONTACT POSITIONS

See Chart Below

DIMENSIONS Dimensions in [] are in millimeters, all others are in inches.



Tolerances on non-critical dimensions may vary slightly due to shrinkage differential per insulator material; Consult factory.

| POSITIONS/ CONTACTS | INCHES | | | | | | MILLIMETERS | | | | | |
|------------------------|--------|--------|--------|--------|--------|----------------|-------------|--------|--------|--------|--------|--------------|
| | A±.008 | B±.008 | C±.015 | D±.010 | E±.020 | F+-.005/-0.015 | A±0.20 | B±0.20 | C±0.38 | D±0.25 | E±0.51 | F+0.13/-0.38 |
| 06/12 | 0.625 | 0.875 | 1.035 | 1.295 | 1.575 | 0.330 | 15.88 | 22.23 | 26.29 | 32.89 | 40.01 | 8.38 |
| 10/20 | 1.125 | 1.375 | 1.535 | 1.795 | 2.075 | | 28.58 | 34.93 | 38.99 | 45.59 | 52.71 | |
| 14/28 | 1.625 | 1.875 | 2.035 | 2.295 | 2.575 | | 41.28 | 47.63 | 51.69 | 58.29 | 65.41 | |
| 15/30 | 1.750 | 2.000 | 2.160 | 2.420 | 2.700 | | 44.45 | 50.80 | 54.86 | 61.47 | 68.58 | |
| 18/36 | 2.125 | 2.375 | 2.535 | 2.795 | 3.075 | | 53.98 | 60.33 | 64.39 | 70.99 | 78.11 | |
| 22/44 | 2.625 | 2.875 | 3.035 | 3.295 | 3.575 | | 66.68 | 73.03 | 77.09 | 83.69 | 90.81 | |
| 28/56 | 3.375 | 3.625 | 3.785 | 4.045 | 4.325 | | 85.73 | 92.08 | 96.14 | 102.74 | 109.86 | |
| 30/60 | 3.625 | 3.875 | 4.035 | 4.295 | 4.575 | | 92.08 | 98.43 | 102.49 | 109.09 | 116.21 | |
| 31/62 | 3.750 | 4.000 | 4.160 | 4.420 | 4.700 | | 95.25 | 101.60 | 105.66 | 112.27 | 119.38 | |
| 35/70 | 4.250 | 4.500 | 4.660 | 4.920 | 5.200 | | 107.95 | 114.30 | 118.36 | 124.97 | 132.08 | |
| 36/72 | 4.375 | 4.625 | 4.785 | 5.045 | 5.325 | 0.370 | 111.13 | 117.48 | 121.54 | 128.14 | 135.26 | 9.40 |
| 37/74 | 4.500 | 4.750 | 4.910 | 5.170 | 5.450 | | 114.30 | 120.65 | 124.71 | 131.32 | 138.43 | |
| 40/80 | 4.875 | 5.125 | 5.285 | 5.545 | 5.825 | | 123.83 | 130.18 | 134.24 | 140.84 | 147.96 | |
| 43/86 | 5.250 | 5.500 | 5.660 | 5.920 | 6.200 | | 133.35 | 139.70 | 143.76 | 150.37 | 157.48 | |
| 44/88 | 5.375 | 5.625 | 5.785 | 6.045 | 6.325 | | 136.53 | 142.88 | 146.94 | 153.54 | 160.66 | |
| 49/98 | 6.000 | 6.250 | 6.410 | 6.670 | 6.950 | | 152.40 | 158.75 | 162.81 | 169.42 | 176.53 | |
| 50/100 | 6.125 | 6.375 | 6.535 | 6.795 | 7.075 | | 155.58 | 161.93 | 165.99 | 172.59 | 179.71 | |