

# MICRO SWITCH

A DIVISION OF MILWAUKEE-HONEYWELL REGULATOR COMPANY  
FREEPORT, ILLINOIS

FED. MFR. CODE 91929

# SWITCH-BASIC

CATALOG LISTING  
**1SE3-T**

1SE3-T

M

DRAWING NUMBER

89

ISSUE

84

REPLACES

SR 8855

RELEASE NO.

CHECK

1 MAY 58

24 MAR 59

14 MAR 60

27 APR 60

14 MAY 63

28 JUL 64

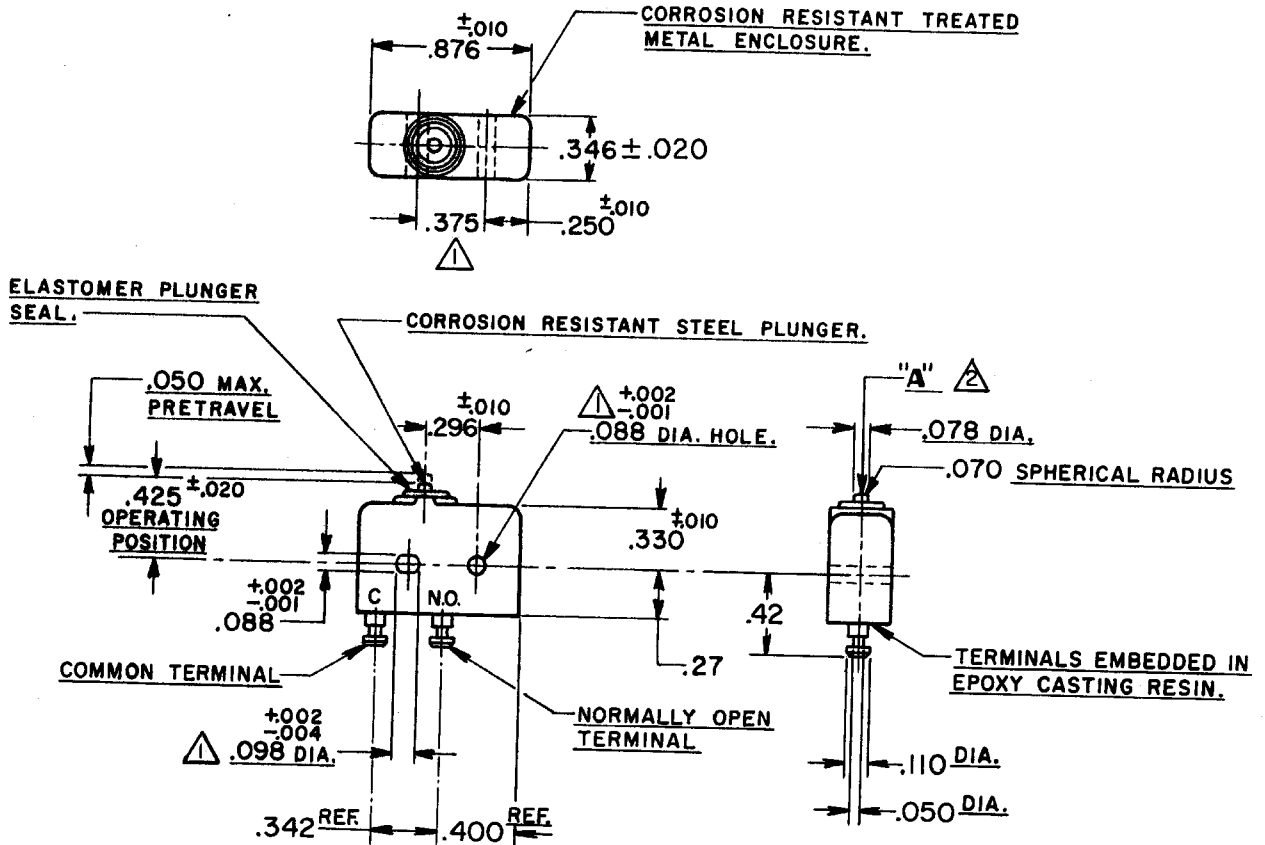
7 DEC 94

CHECK

15 MAR 60

CHECK

1 MAY 58



**NOTE:**

- 1 MOUNTING HOLES WILL ACCEPT .087 MAX. DIA. PINS OR SCREWS ON .375  $\pm .002$  CENTERS.
- 2 ACTUATION IN LINE WITH ARROW "A" IS RECOMMENDED.

THIS DRAWING COVERS A PROPRIETARY ITEM AND IS THE PROPERTY OF MICRO SWITCH, A DIVISION OF HONEYWELL. THIS DRAWING IS NOT TO BE COPIED OR USED WITHOUT THE APPROVAL OF MICRO SWITCH.

**CHARACTERISTICS**

OPERATING FORCE ----- 5-17 OZ.  
 RELEASE FORCE ----- 4 OZ. MIN.  
 RELEASE TRAVEL ----- .004 MIN.  
 DIFFERENTIAL TRAVEL ----- .004 MAX.  
 OVERTRAVEL ----- .003 MIN.

**ELECTRICAL DATA**

CONTACT ARRANGEMENT  
S. P. N.O.

**250 VAC** ----- 5 AMP  
**30 VOLTS DC RATING**

INDUCTIVE ----- SEA LEVEL ----- 3 AMP  
 50,000 FT. ----- 2.5 AMP

RESISTIVE ----- SEA LEVEL ----- 5 AMP  
 50,000 FT. ----- 5 AMP

MAXIMUM INRUSH ----- 24 AMP

**SCALE FULL**

DO NOT SCALE PRINT

UNLESS OTHERWISE SPECIFIED  
 DIMENSIONS ARE IN INCHES  
**TOLERANCES ARE:**  
 ONE PLACE (.0)  $\pm .030$   
 TWO PLACE (.00)  $\pm .015$   
 THREE PLACE (.000)  $\pm .005$   
 ANGLES  $\pm$

WEIGHT .26 OZ MAX (E)

FO-50376

DRAWN D. A. W. I, MAY 58

CHECK GCH 15 MAR 60