

PRODUCT NO. 95635-XXXXX	PUSH-ROD LOCATION		STAND-OFF HEIGHT DIM "L"	DIM "P"	DOUBLE - DECK HEADER 92821-XXX	(B) CLOSEST TO PCB	(C) FARTEST FROM PCB	MOUNTING STYLE TO PCB AND PUSH-ROD SIDE
	DECK CLOSEST TO PCB	DECK FARTHEST FROM PCB				EJECT MECHANISM 88644-XXXX	EJECT MECHANISM 94307-XXXX	
000CA	LEFT	RIGHT	0.0	2.8	92821-000	10CA	00CA	
020CA	LEFT	RIGHT	2.0	2.5	92821-040	12CA	00CA	
050CA	LEFT	RIGHT	5.0	2.8	57956-050	15CA	00CA	
100CA	RIGHT	LEFT	0.0	2.8	92821-000	00CA	10CA	
120CA	RIGHT	LEFT	2.0	2.5	92821-040	02CA	10CA	
150CA	RIGHT	LEFT	5.0	2.8	57956-050	05CA	10CA	
200CA	RIGHT	RIGHT	0.0	2.8	92821-000	00CA	00CA	
220CA	RIGHT	RIGHT	2.0	2.5	92821-040	02CA	00CA	
250CA	RIGHT	RIGHT	5.0	2.8	57956-050	05CA	00CA	
300CA	LEFT	LEFT	0.0	2.8	92821-000	10CA	10CA	
320CA	LEFT	LEFT	2.0	2.5	92821-040	12CA	10CA	
350CA	LEFT	LEFT	5.0	2.8	57956-050	15CA	10CA	
000CALF	LEFT	RIGHT	0.0	2.8	92821-000LF	10CA	00CA	
020CALF	LEFT	RIGHT	2.0	2.5	92821-040LF	12CA	00CA	
050CALF	LEFT	RIGHT	5.0	2.8	57956-050LF	15CA	00CA	
100CALF	RIGHT	LEFT	0.0	2.8	92821-000LF	00CA	10CA	
120CALF	RIGHT	LEFT	2.0	2.5	92821-040LF	02CA	10CA	
150CALF	RIGHT	LEFT	5.0	2.8	57956-050LF	05CA	10CA	
200CALF	RIGHT	RIGHT	0.0	2.8	92821-000LF	00CA	00CA	
220CALF	RIGHT	RIGHT	2.0	2.5	92821-040LF	02CA	00CA	
250CALF	RIGHT	RIGHT	5.0	2.8	57956-050LF	05CA	00CA	
300CALF	LEFT	LEFT	0.0	2.8	92821-000LF	10CA	10CA	
320CALF	LEFT	LEFT	2.0	2.5	92821-040LF	12CA	10CA	
350CALF	LEFT	LEFT	5.0	2.8	57956-050LF	15CA	10CA	

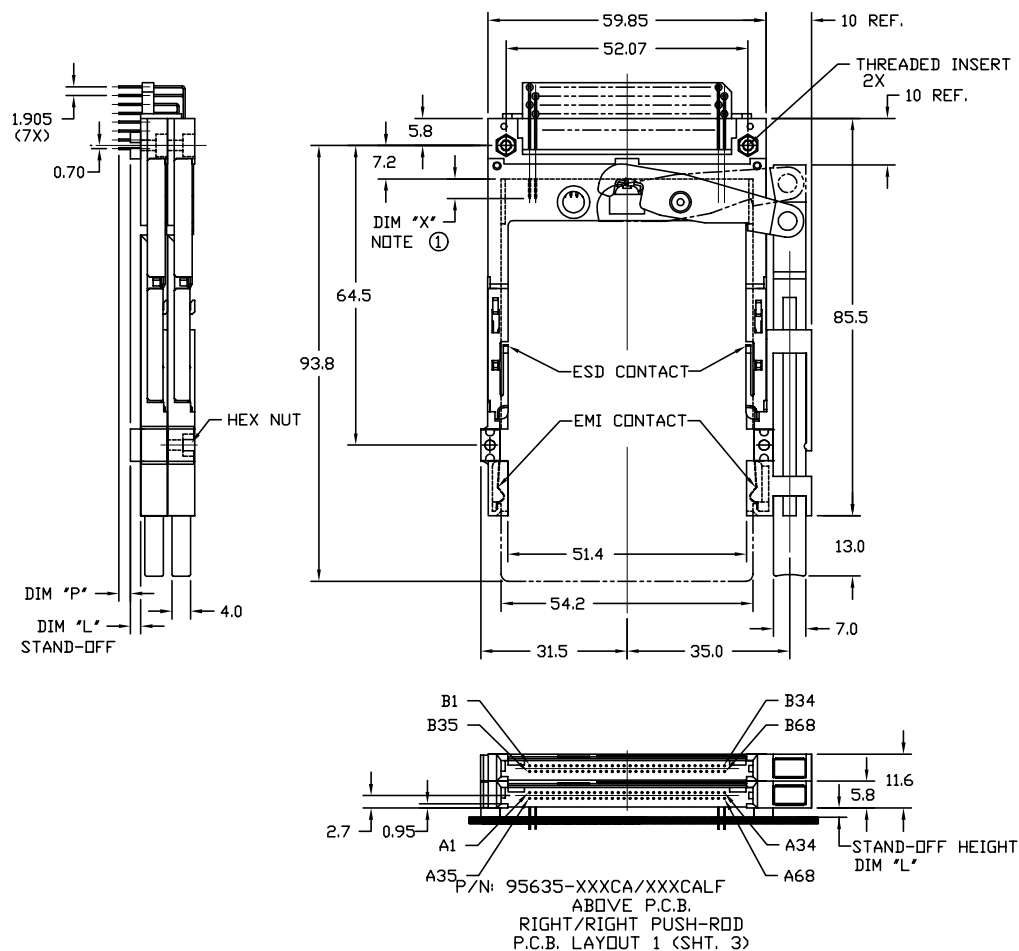
mat'l. code				surface <input checked="" type="checkbox"/> ISO 1302 <input checked="" type="checkbox"/> ISO 406 ISO1101		tolerance		projection		product family		
l t r e c n n o d r				date		tolerances unless otherwise specified				PCMCIA		
D	V61383	RDS	9/16/96	angle		0.X±0.3		MM		DOUBLE-DECK HEADER EJECT ASSY		
E	V11670	RGD	6/6/01	0°±2'		0.XX±0.13						
F	V20419	LP	3/25/02			0.XXX±0.051		scale 1:1				
G	N05-0052	WB	02/25/05	dr	D.SHEAFFER	9/16/96			dwg no		sheet 1 of 4	size
H	N05-0077	WB	03/17/05	engr	D.BRANN	9/16/96			95635		A4	
J	EX-N-007340	ZK	10/25/11	chr	D.BRANN	9/16/96			type		Product Customer Drawing	
K	EX-N-011443	ZK	04/12/12	appd	D.BRANN	9/16/96						
sheet	revision	K	K	K	K							
index	sheet	1	2	3	4							



PRODUCT NO. 95635-XXXX	PUSH-ROD LOCATION		STAND-OFF HEIGHT DIM "L"	DIM "P"	DOUBLE DECK HEADER 92821-XXX	B CLOSEST TO PCB EJECT MECHANISM 88644-XXXX	C FARTHEST FROM PCB EJECT MECHANISM 94307-XXXX	MOUNTING STYLE TO PCB AND PUSH-ROD SIDE
	DECK CLOSEST TO PCB	DECK FARTHEST FROM PCB						
500CA	RIGHT	LEFT	0.0	2.8	92821-500	10CA	00CA	
520CA	RIGHT	LEFT	2.0	2.5	92821-540	12CA	00CA	
550CA	RIGHT	LEFT	5.0	2.8	57956-550	15CA	00CA	
600CA	LEFT	RIGHT	0.0	2.8	92821-500	00CA	10CA	
620CA	LEFT	RIGHT	2.0	2.5	92821-540	02CA	10CA	
650CA	LEFT	RIGHT	5.0	2.8	57956-550	05CA	10CA	
700CA	RIGHT	RIGHT	0.0	2.8	92821-500	10CA	10CA	
700CP	RIGHT	RIGHT	0.0	2.8	92821-500	10CP	10CP	
720CA	RIGHT	RIGHT	2.0	2.5	92821-540	12CA	10CA	
750CA	RIGHT	RIGHT	5.0	2.8	57956-550	15CA	10CA	
800CA	LEFT	LEFT	0.0	2.8	92821-500	00CA	00CA	
820CA	LEFT	LEFT	2.0	2.5	92821-540	02CA	00CA	
850CA	LEFT	LEFT	5.0	2.8	57956-550	05CA	00CA	
500CALF	RIGHT	LEFT	0.0	2.8	92821-500LF	10CA	00CA	
520CALF	RIGHT	LEFT	2.0	2.5	92821-540LF	12CA	00CA	
550CALF	RIGHT	LEFT	5.0	2.8	57956-550LF	15CA	00CA	
600CALF	LEFT	RIGHT	0.0	2.8	92821-500LF	00CA	10CA	
620CALF	LEFT	RIGHT	2.0	2.5	92821-540LF	02CA	10CA	
650CALF	LEFT	RIGHT	5.0	2.8	57956-550LF	05CA	10CA	
700CALF	RIGHT	RIGHT	0.0	2.8	92821-500LF	10CA	10CA	
700CPLF	RIGHT	RIGHT	0.0	2.8	92821-500LF	10CP	10CP	
720CALF	RIGHT	RIGHT	2.0	2.5	92821-540LF	12CA	10CA	
750CALF	RIGHT	RIGHT	5.0	2.8	57956-550LF	15CA	10CA	
800CALF	LEFT	LEFT	0.0	2.8	92821-500LF	00CA	00CA	
820CALF	LEFT	LEFT	2.0	2.5	92821-540LF	02CA	00CA	
850CALF	LEFT	LEFT	5.0	2.8	57956-550LF	05CA	00CA	

NOTES (CONTINUOUS ON SHEET 3):
1 EJECT FORCE 3.5kg MAX.
2 EJECT TRAVEL - 8.0mm
3 MATERIAL
HOUSING: HIGH TEMPERATURE THERMOPLASTIC UL94V-0 BLACK
TERMINAL: COPPER ALLOY
COVER: STAINLESS STEEL
4 FINISH - PIN
UNDER PLATING: 1.27µm MIN. Ni
CONTACT AREA: 0.076 µm MIN. GOLD
SOLDER TAIL(TIN LEAD OPTION): 2.5µm MIN Sn-Pb
SOLDER TAIL(LEAD FREE OPTION): 2.5µm MIN PURE TIN

mat'l. code		surface		tolerance		projection		product family	
		ISO 1302		ISO 406 ISO 1101				PCMCIA	
l t r e c n n o d r		date		tolerances unless otherwise specified		title			
K				0.X±0.3		MM		DOUBLE-DECK	
				0.XX±0.13				HEADER EJECT ASSY	
				0.XXX±0.051		scale 1:1			
dr		D.SHEAFFER		9/16/96				dwg no	
enr		D.BRANN		9/16/96				sheet 2 of 4	
chr		D.BRANN		9/16/96				size	
appd		D.BRANN		9/16/96				A4	
sheet		revision				type		Product Customer Drawing	
index		sheet							

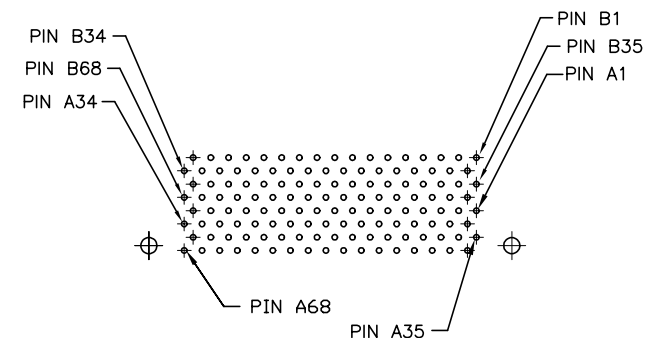
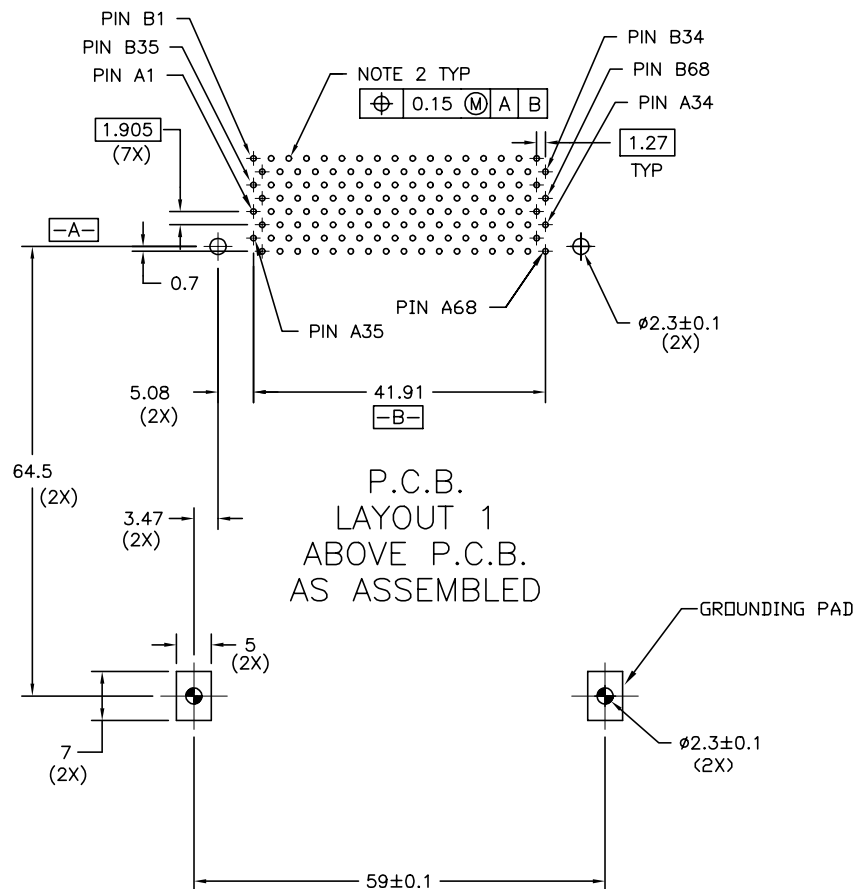


NOTES (CONTINUOUS FROM SHEET 2):

DIM "X"	4.25±0.1	3.5±0.1	5.0±0.1
PIN NUMBER	OTHERS	36,67	1,17,34,35,51,68

- RECOMMENDED HOLD DOWN - 2mm SCREWS (95121)
RECOMMENDED SCREW TORQUE: 1.0 TO 1.5 MAX in.-lbs. (1.2-1.7 cm.-kgs).
- IF LEAD FREE P/N, THE HOUSING WILL WITHSTAND EXPOSURE TO 260°C PEAK TEMPERATURE FOR 10 SECONDS IN A WAVE SOLDER APPLICATION WITH A 1.00MM MINIMUM THICK CIRCUIT BOARD.
- LEAD FREE PRODUCT MEETS EUROPEAN UNION DIRECTIVES AND OTHER COUNTRY REGULATIONS AS DISCRIBLED IN GS-22-008
- IF LEAD FREE P/N, PACKAGING MEETS GS-14-920 SPECIFICATION
- PRODUCT SPEC: 110-263

mat'l. code	surface	tolerance	projection	product family
	ISO 1302	ISO 406	ISO 1101	PCMCIA
l t r e c n n o d r	date	tolerances unless otherwise specified	MM	DOUBLE-DECK HEADER EJECT ASSY
K		0.X±0.3	scale 1:1	
	angle	0.XX±0.13		
	0°±2'	0.XXX±0.051		
dr	D.SHEAFFER	9/16/96		dwg no
enr	D.BRANN	9/16/96		sheet 3 of 4
chr	D.BRANN	9/16/96		size
appd	D.BRANN	9/16/96		A4
sheet	revision			type
index	sheet			Product Customer Drawing



NOTES:

1. ALL TOLERANCES ± 0.15 UNLESS NOTED.
2. RECOMMENDED DIAMETER IS $\phi 1.0$ FOR PROCESSES USING PASTE REFLOW. HOLE MAY BE AS SMALL AS $\phi 0.79$
3. BOARD VIEW FROM CONNECTOR MOUNTED SIDE TOP OF BOARD IN APPLICATION

mat'l. code				surface			tolerance	projection	product family			
				ISO 1302	ISO 406	ISO 1101			PCMCIA			
l	t	r	e	c	n	n	d	a	t	e	tolerances unless otherwise specified	
k											MM	
											scale 1:1	
											dwg no	
											sheet 4 of 4	
											size	
											A4	
											type	
											Product Customer Drawing	
sheet	revision											
index	sheet											