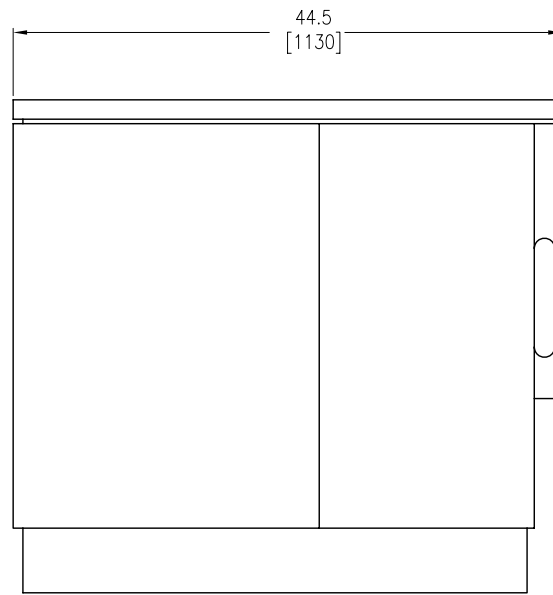
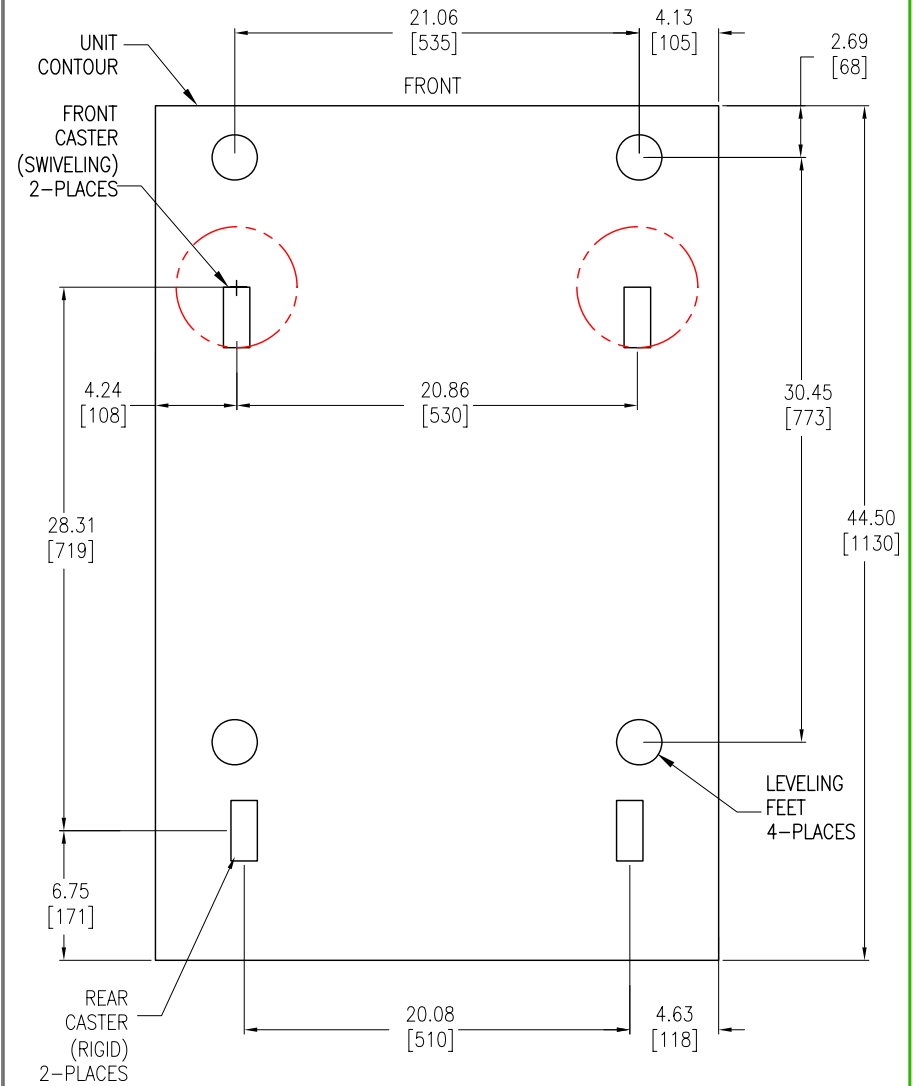


FRONT VIEW



RIGHT SIDE VIEW



BOTTOM VIEW

NOTES: UNLESS OTHERWISE SPECIFIED.

1. INSTALLATION SHALL COMPLY WITH ALL APPLICABLE NATIONAL, STATE AND LOCAL CODES.
2. PLEASE REFER TO PRODUCT MANUALS FOR ADDITIONAL DETAILS.
3. ALL DIMENSIONS ARE IN INCHES [MILLIMETERS].
4. CLEARANCE REQUIRED—
7.9 [200.0] ON EITHER SIDES.
5. CABLE ENTRY IS FROM REAR SIDE.
6. NET WEIGHT OF THE UNIT 303 lbs [138 kg].
7. COLOR — OAK/GREY FINISH.

THIS DRAWING AND SPECIFICATIONS HEREIN ARE THE PROPERTY OF SCHNEIDER ELECTRIC AND SHALL NOT BE COPIED, REPRODUCED OR USED IN WHOLE OR IN PART, AS THE BASIS FOR THE MANUFACTURE OR SALE OF ITEMS WITHOUT WRITTEN PERMISSION FROM SCHNEIDER ELECTRIC. THIS DRAWING IS BASED UPON LATEST AVAILABLE INFORMATION AND IS SUBJECT TO CHANGE WITHOUT NOTICE.

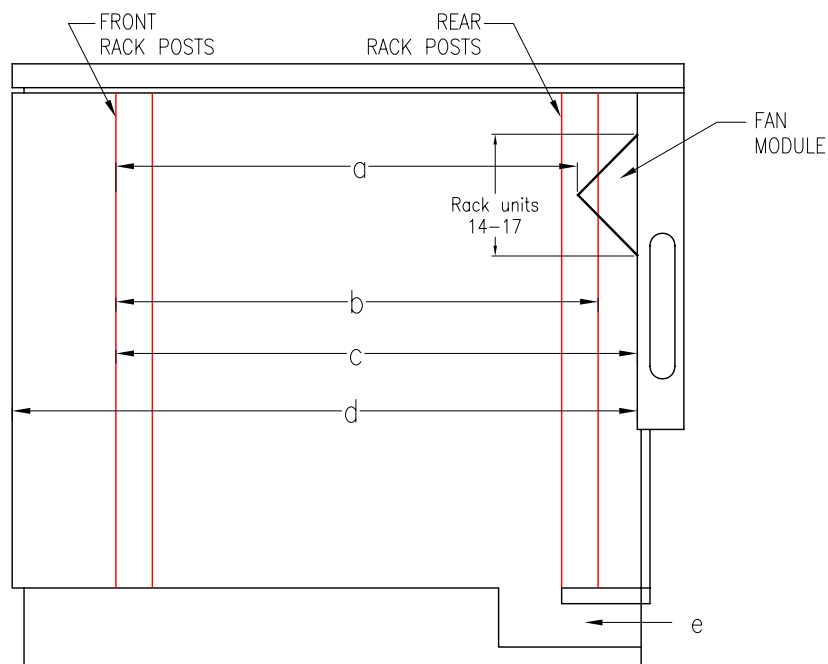
Schneider
Electric

TITLE:
NetShelter CX Enclosure
18U, 750mm Wide X 1130mm Deep
MAIN MECHANICAL

PROJECT: SUBMITTAL DRAWINGS SHEET 1 OF 2

DWG NO: AR4018
DRAWN BY: K.NAGENDRA 03-DEC-09
ENGINEER: BOB OLIVER/J.KUMMER 03-DEC-09
APPROVED BY: B.SHERIDAN 03-DEC-09

REV. 0
THIRD
ANGLE
PROJECTION

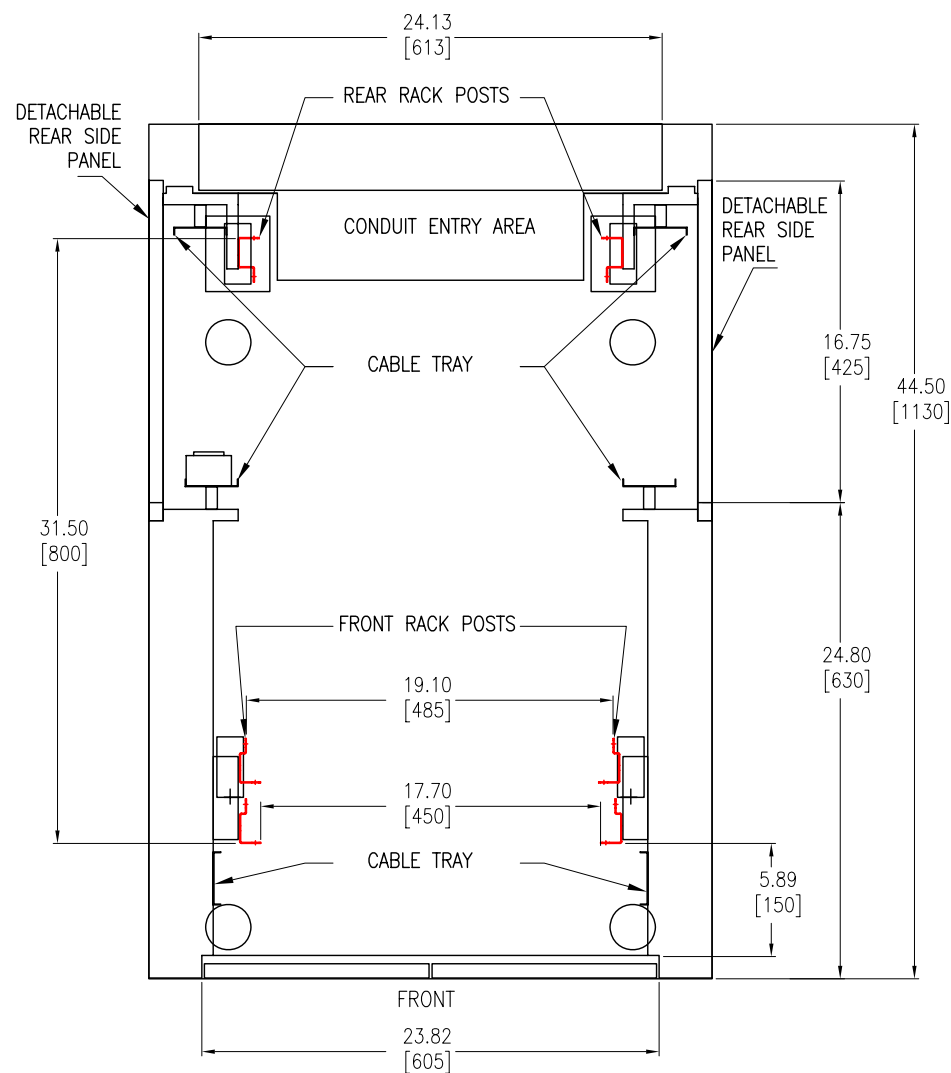


INTERNAL VIEW
(RIGHT SIDE)

Details	Dimension
a	30.5 [775]
b	31.5 [800]
c	33.5 [860]
d	39.5 [1010]



e – Indicates soundproofed
cable entry/exit pathway



INTERNAL-BOTTOM VIEW
(LOOKING FROM TOP)

NOTES: UNLESS OTHERWISE SPECIFIED.

1. INSTALLATION SHALL COMPLY WITH ALL APPLICABLE NATIONAL, STATE AND LOCAL CODES.
2. PLEASE REFER TO PRODUCT MANUALS FOR ADDITIONAL DETAILS.
3. ALL DIMENSIONS ARE IN INCHES [MILLIMETERS].
- △ 4. DUE TO TRIANGULAR PROTRUSION OF FAN MODULES
INTERNAL CABINET DEPTH REDUCED TO 30.5 [775.0].
REFER TO INSTALLATION MANUAL FOR DETAILS.

THIS DRAWING AND SPECIFICATIONS HEREIN ARE THE PROPERTY OF SCHNEIDER ELECTRIC AND SHALL NOT BE COPIED, REPRODUCED OR USED IN WHOLE OR IN PART, AS THE BASIS FOR THE MANUFACTURE OR SALE OF ITEMS WITHOUT WRITTEN PERMISSION FROM SCHNEIDER ELECTRIC. THIS DRAWING IS BASED UPON LATEST AVAILABLE INFORMATION AND IS SUBJECT TO CHANGE WITHOUT NOTICE.

Schneider
Electric

TITLE:
NetShelter CX Enclosure
18U, 750mm Wide X 1130mm Deep
INTERNAL DETAILS

PROJECT: SUBMITTAL DRAWINGS SHEET 2 OF 2

DWG NO: AR4018

DRAWN BY: JAYAPRAKASH 9-MAR-12

ENGINEER: DAVID O'COMIN 9-MAR-12

APPROVED BY: JAMES KUMMER 9-MAR-12

REV. 1

THIRD
ANGLE
PROJECTION