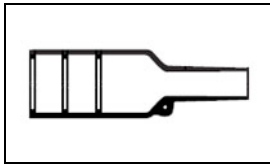


What can we help you find?

[Products](#) [Industries](#) [Resources](#) [About TE](#) [My Account](#) [Innovation](#) [Support Center](#)**202K142-25-0 Product Details**[+ Share](#) [Print](#) [Email](#)**202K142-25-0**

TE Internal Number: 878496-000



Active

**Molded Parts** Always EU RoHS/ELV Compliant (Statement of Compliance)**Product Highlights:**

- Molded Part Type = Molded Boot
- Family Name = 202K1
- Straight
- General Purpose Application, Military Application
- Entry Size, Braided or Magneform Adapter = 10, 11

[View all Features](#)**Quick Links**

- ▶ [Pricing & Availability](#)
- ▶ [Search for Tooling](#)
- ▶ [Product Feature Selector](#)
- ▶ [Contact Us About This Product](#)

[Add to My Part List](#)[Request Sample](#)[Find Similar Products](#)[Buy Product](#)**Documentation & Additional Information****Product Drawings:**

- [Boot, straight with lip](#) (PDF, English)

**Catalog Pages/Data Sheets:**

- None Available

**Product Specifications:**

- None Available

**Application Specifications:**

- None Available

**Instruction Sheets:**

- None Available

**CAD Files:**

- None Available

**Additional Information:**

- [Product Line Information](#)

**Related Products:**

- [Tooling](#)

[List all Documents](#)**Product Features (Please use the Product Drawing for all design activity)****Product Type Features:**

- [Molded Part Type](#) = Molded Boot
- [Family Name](#) = 202K1
- Angle = Straight
- Adhesive Description = Adhesive Purchased Separately.
- Size = 42

**Mechanical Attachment:**

- Adhesive Pre-Coating = Without

**Dimensions:**

- Adapter Entry Size Outside Diameter (Min-Max) (mm [in]) = 18.00 – 24.00 [0.709 – 0.945]
- Cable Diameter Range (mm [in]) = 7.10 – 16.00 [0.280 – 0.630]

**Body Features:**

- Material = Fluid Resistant Modified Elastomer

**Housing Features:**

- Entry Size, Braided or Magneform Adapter = 10, 11
- Entry Size, Tinel-Lock Adapter = 7, 8, 10
- Entry Size - Solid or Fixed Adapter = 6
- Entry Size - Spin Coupling Adapter = 8 – 10
- [Material Systems Code](#) = 25

**Configuration Features:**

- Material Code = 25

**Industry Standards:**

- Government/Industry Qualification = No
- Approved Standards = DEF Std 59-97 Issue 3 Type DE, MIS-34867, VG95343 Parts 6, 7, 8, & 9
- [RoHS/ELV Compliance](#) = RoHS compliant, ELV compliant
- [Lead Free Solder Processes](#) = Not relevant for lead free process
- RoHS/ELV Compliance History = Always was RoHS compliant

**Environmental:**

- Operating Temperature (°C) = -75 – +150

**Operation/Application:**

- Application = General Purpose, Military

**Purchasing Information:**

- Adhesive Code = S1125

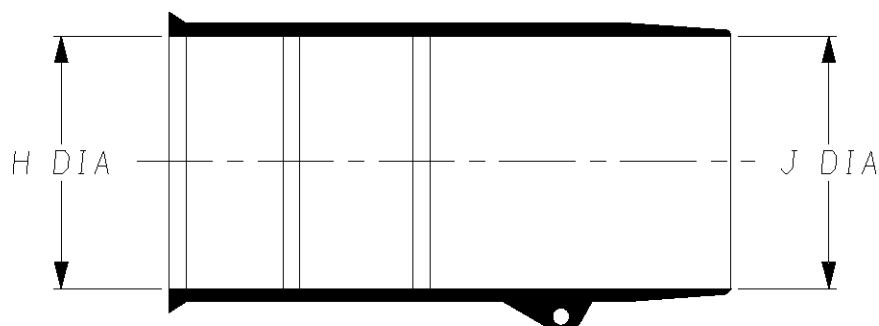
**Other:**

- Brand = Raychem
- Comment = Contact Raychem for additional adhesive and/or cut off boot length information

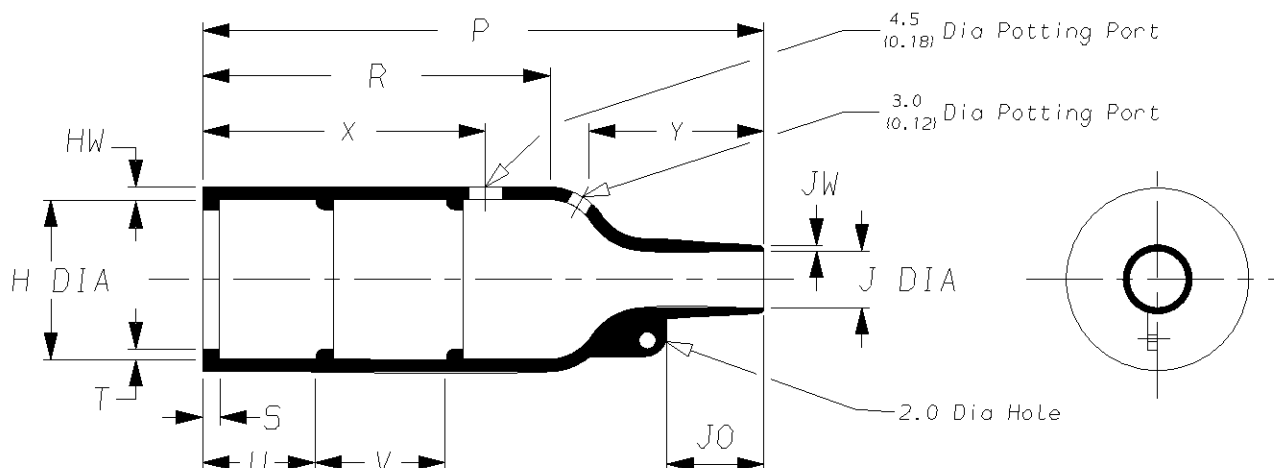
**Corporate Information**[About TE](#)[Investors](#)[News Room](#)**Quick Links**[Distributor Inventory](#)[Product Cross Reference](#)[Documents & Drawings](#)**Customer Support**[Email or Chat With Us](#)[Find a Phone Number](#)[Knowledge Base](#)

a) Part as supplied.

202K1\*\*




b) Part after unrestricted recovery.



**DIMENSIONS** in millimetres  
(in inches, for reference)

Part No.	H		J		P	R	S	T	U&V	JO	HW	JW	X	Y
	Min	Max	Min	Max	±10%	±10%	±10%	±10%	±10%	±10%	±20%	±20%	±20%	±20%
	a	b	a	b	b	b	b	b	b	b	b	b	b	b
① 202K121	24 (0.94)	10.4 (0.41)	24 (0.94)	5.6 (0.22)	38 (1.50)	21 (0.83)	3.0 (0.12)	1.0 (0.04)	12 (0.47)	8.5 (0.33)	1.6 (0.06)	0.9 (0.04)	24 (0.94)	13 (0.51)
① 202K132	30 (1.18)	14.2 (0.56)	30 (1.18)	5.9 (0.23)	55 (2.17)	32 (1.26)	3.0 (0.12)	1.0 (0.04)	12 (0.47)	11.5 (0.45)	1.8 (0.07)	1.0 (0.04)	24 (0.94)	18 (0.71)
① 202K142	31 (1.22)	18.0 (0.71)	31 (1.22)	7.1 (0.28)	67 (2.64)	35 (1.38)	3.0 (0.12)	1.0 (0.04)	20 (0.79)	17.0 (0.67)	1.8 (0.07)	1.0 (0.04)	32 (1.26)	25 (0.98)
① 202K153	36 (1.42)	22.4 (0.88)	36 (1.42)	8.4 (0.33)	80 (3.15)	42 (1.65)	3.0 (0.12)	1.0 (0.04)	20 (0.79)	19.5 (0.77)	2.0 (0.08)	1.0 (0.04)	32 (1.26)	30 (1.18)
202K163	43 (1.69)	28.2 (1.11)	43 (1.69)	9.9 (0.39)	99 (3.90)	61 (2.40)	3.0 (0.12)	1.7 (0.07)	20 (0.79)	21.0 (0.83)	2.2 (0.09)	1.2 (0.05)	52 (2.05)	30 (1.18)
202K174	60 (2.36)	35.1 (1.38)	60 (2.36)	15.7 (0.62)	130 (5.12)	72 (2.83)	3.0 (0.12)	1.7 (0.07)	20 (0.79)	39.0 (1.54)	3.2 (0.13)	1.5 (0.06)	52 (2.05)	50 (1.97)
202K185	66 (2.60)	44.5 (1.75)	66 (2.60)	16.8 (0.66)	170 (6.69)	90 (3.54)	3.0 (0.12)	2.0 (0.08)	20 (0.79)	51.5 (2.03)	3.8 (0.15)	2.0 (0.08)	52 (2.05)	70 (2.76)

② See over for explanation of Notes ① and ②

 <b>Specification</b> <b>Control Drawing</b>		Part Number 202K1** Issue 16	
Iss.	Date	E.C.R. No.	Details of Change
7	August 1986	4865	Jo Dimension moved, & 2.0 Dia note added
8	August 1986	4865	Jo dimension changed
9	February 2000	CR00-HM-0001	Injection point note added
10	April 2001	CR01-HM-0008	Redrawn to include inches
11	February 2002	CR02-HM-0003	/180 added to -3 & -4
12	March 2002	CR02-HM-0001	Note ⑨ added (on 121 JW is 0.9 for -25)
13	June 2002	CR02-HM-0001v2	Note ⑨ removed
14	February 2005	H0307	JW was 1.0
15	April 2007	CR07-HM-010	Document title was 202K121 thru 185

## Ordering Information

202K1**-*/**-0		
		Adhesive Slash Number (if required see compatibility chart)
		Material Dash Number (see compatibility chart)
		Base Part Number

## COMPATIBILITY CHART

Material Dash Number	Material Description	SPEC Number	Coating Slash Number
-3	POLYOLEFIN, SEMI-RIGID	RT-301, RK-6703	/42, /86, /180
-4	POLYOLEFIN, FLEXIBLE	RT-1304 RT-1050	/42, /86, /180
-6	SILICON	RT-602, RK-6706	N/A
-25	ELASTOMER, FLUID RESISTANT	RT-1325, RK-6713	/42, /86, /225
-130	POLYOLEFIN, COMMERCIAL FLEXIBLE	RW-2008	/42

## NOTES

- Supplied with 2 lips only, Dimension V does not apply.
- Potting Port X @ 90° to Potting Port Y on 202K121.
- If eyelet clip (000W212) is required with part then add CS-1858 to description (i.e. 202K132-3-CS-1858-0).
- As supplied dimensions are for uncoated parts, when coating is added entry diameters will reduce by 1.5mm Max.
- Potting Ports are optional, when specified by suffix -00 they will be located as shown.
- For -12 SCD see 202K1\*\*-12.
- For -100 SCD see 202K1\*\*-100.
- On some parts a bump or depression at the material injection point may exist as a normal manufacturing process.

TE Connectivity Faraday Road, Swindon, Wiltshire, SN3 5HH England Telephone: (01793) 528171 Fax: 572516	TE Connectivity 300, Constitution Drive, Menlo Park, CA 94025 USA Telephone (650) 361-3860 Fax: (650) 361-5579
Cage Code K1010	Cage Code 06090