

THE INFORMATION CONTAINED HEREIN IS CONSIDERED "PROPRIETARY" TO BEL FUSE INC. AND SHALL NOT BE COPIED, REPRODUCED OR DISCLOSED WITHOUT THE WRITTEN APPROVAL OF BEL FUSE INC.



ELECTRICAL SPECIFICATIONS:

DESIGNED FOR OPERATION FROM -40 TO 85 degrees C

- 1.0 INDUCTANCE: (P2-P3)

(P4-P5)

(P6-P7)

(P8-P9)
- : 350uH MIN. @ 0.1V, 100KHz, 8mA DC Bias

: 350uH MIN. @ 0.1V, 100KHz, 8mA DC Bias

: 350uH MIN. @ 0.1V, 100KHz, 8mA DC Bias

: 350uH MIN. @ 0.1V, 100KHz, 8mA DC Bias
- 2.0 TURNS RATIO: (P2-P3) : (J1-J2)

(P4-P5) : (J3-J6)

(P6-P7) : (J4-J5)

(P8-P9) : (J7-J8)
- : 1CT : 1CT ± 2%

: 1CT : 1CT ± 2%

: 1CT : 1CT ± 2%

: 1CT : 1CT ± 2%
- 3.0 RETURN LOSS: 100 OHM REF. 500kHz TO 40MHz

40MHz TO 100MHz
- : -18dB MIN.

: -12+20LOG(f/80MHZ) MIN.
- 4.0 INSERTION LOSS: RS=RL=100 OHMS 100KHz TO 100MHz

:

1.2dB MAX.
- 5.0 CROSS TALK: Ch1-Ch2, Ch1-Ch3, Ch1-Ch4, Ch2-Ch3, Ch2-Ch4, Ch3-Ch4

1MHz TO 30MHz

30MHz TO 80MHz

80MHz TO 100MHz
- : -35dB MIN.

: -24dB MIN.

: -25dB MIN.
- 6.0 CM TO CM REJECTION: 100kHz TO 100MHz

:

-30dB MIN.
- 7.0 CM TO DM REJECTION: 100kHz TO 100MHz

:

-35dB MIN.
- 8.0 VOLTAGE WITHSTAND: (J1, J2) TO (P2, P3)

(J3, J6) TO (P4, P5)

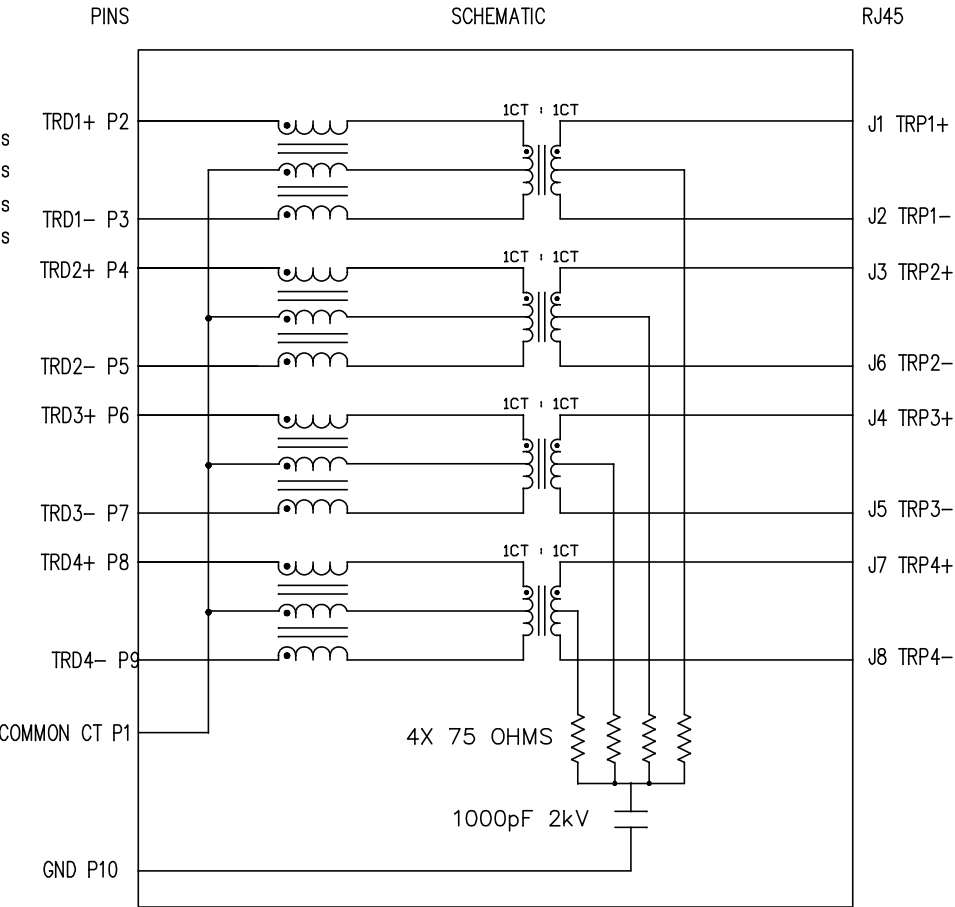
(J4, J5) TO (P6, P7)

(J7, J8) TO (P8, P9)
- : 1500 Vrms

: 1500 Vrms

: 1500 Vrms

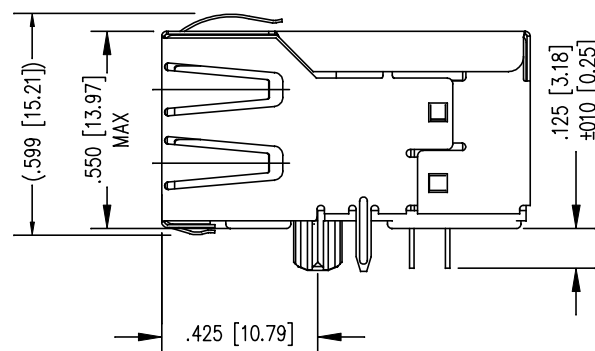
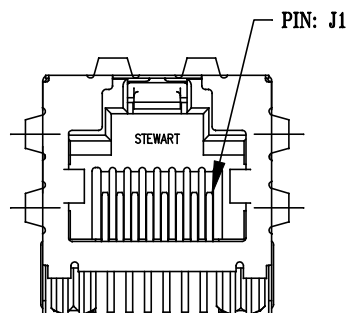
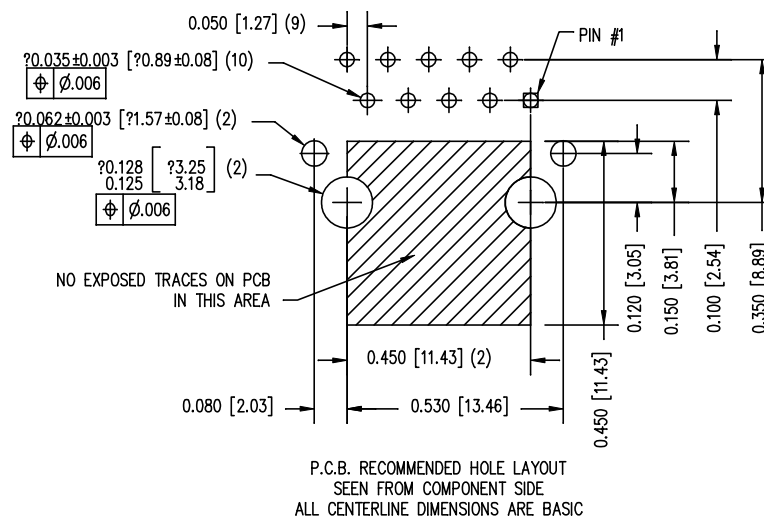
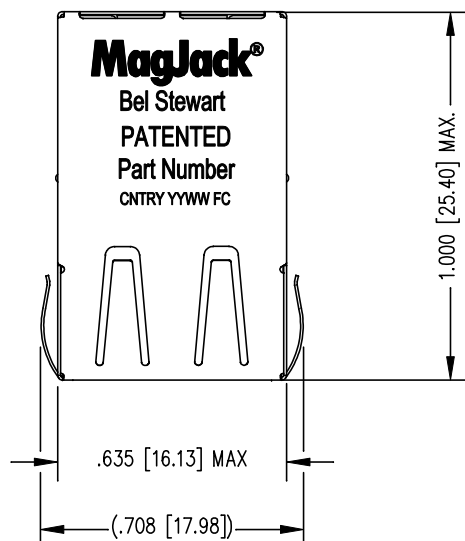
: 1500 Vrms
- 9.0 THIS COMPNENT IS A PATENT PRODUCT;US PATENT NUMBER 7,123,117.



ORIGINATED BY	DATE	TITLE <div>MagJack®</div> TAB UP SHIELDED 10/100/1000BT PATENTED	PART NO. / DRAWING NO.	STANDARD DIM. TOL. IN INCH	[] METRIC DIM. AS REFERENCE		<div>bel</div> <div>COMPONENTS FOR A CONNECTED PLANET</div>
RS Zhang	04-15-10		SI-51024-F		UNIT : INCH [mm]	REV. : 01	
DRAWN BY	DATE		FILE NAME		SCALE : N/A	SIZE : A4	
RS Zhang	04-15-10		SI-51024-F.DWG			PAGE : 2	


THE INFORMATION CONTAINED HEREIN IS CONSIDERED
"PROPRIETARY" TO BEL FUSE INC. AND SHALL NOT BE
COPIED, REPRODUCED OR DISCLOSED WITHOUT THE
WRITTEN APPROVAL OF BEL FUSE INC.

RoHS
2002/95/EC



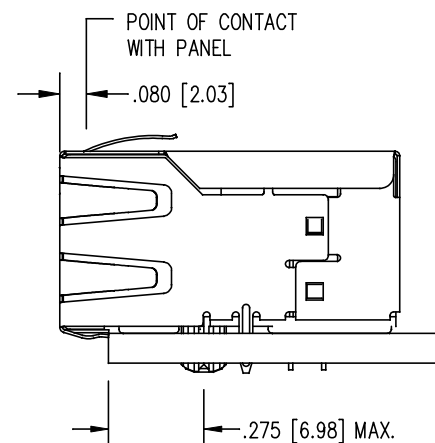
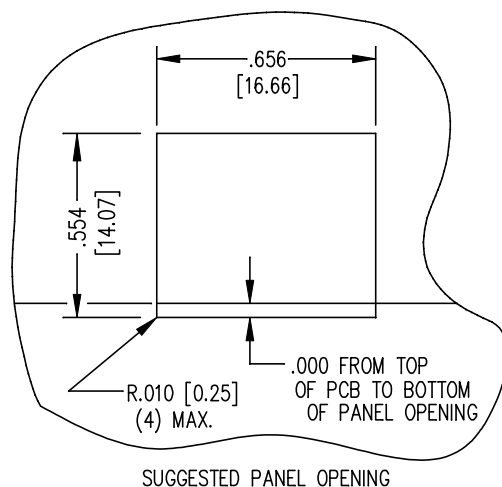
NOTES:

- CONNECTOR MATERIALS:
HOUSING: THERMOPLASTIC UL94 V-0
CONTACT/SHIELD: COPPER ALLOY
SHIELD PLATING: NICKEL OR TIN
CONTACT PLATING: SELECTIVE GOLD,
50 MICRO-INCHES MIN. IN CONTACT AREA.
- PIN NOT ELECTRICALLY CONNECTED MAYBE OMITTED.
SEE ELECTRICAL DRAWING FOR OMITTED PINS.
- TOLERANCES COMPLY WITH F.C.C. DIMENSION REQUIREMENTS.
- ALL TOLERANCES NOT OTHERWISE SPECIFIED TO BE ±.005 [0.13]
- WAVE SOLDER COMPATIBLE - PREHEAT 125°C/90SECS.
HIGH TEMPERATURE REFLOW COMPATABLE - 230°C/90 SEC MAX.

ORIGINATED BY	DATE	TITLE <div>MagJack®</div> <div>TAB UP SHIELDED</div> <div>10/100/1000BT</div> <div>PATENTED</div>	PART NO. / DRAWING NO.	STANDARD DIM.		[] METRIC DIM. AS REFERENCE		<div>bel</div> <div>COMPONENTS FOR A CONNECTED PLANET</div>	
RS Zhang	04-15-10		SI-51024-F	TOL. IN INCH		UNIT : INCH [mm]			REV. : 01
DRAWN BY	DATE		FILE NAME	.X		SCALE : N/A			SIZE : A4
RS Zhang	04-15-10		SI-51024-F.DWG	.XX					PAGE : 3
				.XXX	±0.005				



COMPONENTS FOR A
CONNECTED
PLANET



1. THE SUGGESTED PANEL OPENING IS INTENDED TO GIVE THE USER THE ABILITY TO HAVE REASONABLE JACK / PANEL CLEARANCES YET MAINTAIN RELIABLE GROUNDING CAPABILITY.
2. ALL TOLERANCES NOT OTHERWISE SPECIFIED TO BE ± 0.005 [0.13]

ORIGINATED BY	DATE	TITLE	PART NO. / DRAWING NO.	STANDARD DIM.	[] METRIC DIM. AS REFERENCE	
RS Zhang	04-15-10	MagJack® TAB UP SHIELDED 10/100/1000BT PATENTED	SI-51024-F	TOL. IN INCH	UNIT : INCH [mm]	REV. : 01
DRAWN BY	DATE		FILE NAME	.X	SCALE : N/A	SIZE : A4
RS Zhang	04-15-10		SI-51024-F.DWG	.XX .XXX		PAGE : 4