

TPS75005EVM-023

This user's guide describes the characteristics, operation, and use of the [TPS75005EVM-023](#) evaluation module (EVM). The TPS75005EVM-023 is a reference design for engineering demonstration and evaluation of the [TPS75005](#) dual low-dropout linear regulator (LDO) and triple voltage rail monitor from Texas Instruments. This user's guide includes setup and configuration instructions, a complete schematic diagram, bill of materials (BOM), and printed circuit board (PCB) layouts for the evaluation module. Throughout this document, the abbreviation *EVM* and the term *evaluation module* are synonymous with the TPS75005EVM-023 unless otherwise noted.

Contents

1	Introduction	2
2	Setup	2
3	Operation	4
4	Test Results	5
5	Thermal Guidelines and Layout Recommendations	6
6	Board Layout	7
7	Schematic and Bill of Materials	10

List of Figures

1	Start-Up Sequence, SEQ Set to Logic Low	5
2	Shutdown Sequence, SEQ Set to Logic Low	5
3	Load Step and Transient Response of LDO-1, VSET Set to Logic Low	5
4	Load Step and Transient Response of LDO-2	5
5	Third Voltage Monitor Behavior (VDET) when EXT SVS Drops Below Regulation	6
6	Top Layer with Silk Screen	7
7	Top Layer	8
8	Internal Layer 1	8
9	Internal Layer 2	9
10	Bottom Layer	9
11	TPS75005EVM-023 Schematic	10

1 Introduction

The TPS75005EVM-023 helps design engineers evaluate the operation and performance of the TPS75005 for possible use in their own circuit applications. The TPS75005 is optimized to be a complete power management solution for Texas Instruments' C2000™ real-time microcontrollers and other DSP/FPGA/ASIC MCUs. The device contains dual, 500-mA LDOs. Each LDO output is monitored by an internal supervisor (SVS) circuit to determine the Power Good (PG) signal. A third supervisor allows the customer to independently monitor an additional external voltage. On this EVM, the third SVS monitor is preset by a resistor divider to monitor an external 2.5-V power rail. The two power outputs are enabled and disabled by a single EN logic input. Sequence and soft-start circuitry provide a means to program the start-up characteristics and to ensure well-behaved output ramp-up.

This document describes the configuration and setup of the TPS75005EVM-023 board.

2 Setup

This section describes the jumpers and connectors on the EVM as well as how to properly connect, set up, and use the TPS75005EVM-023.

2.1 Input / Output Connector Descriptions

J1: EXT SVS

This connector is the input to the voltage monitoring function (VMON) of the TPS75005. When the voltage at this header drops below approximately 2.35 V, the VDET output drops to logic low. The VDET output can be measured at TP1.

J2: VIN

This connector is the input power-supply voltage connector. The positive input lead and ground return lead from the input power supply should be twisted and kept as short as possible to minimize electromagnetic interference (EMI) transmission.

J3: GND

This connector is the return connection for the input power supply. The positive input lead and ground return lead from the input power supply should be twisted and kept as short as possible to minimize EMI.

J4: VOUT2

This connector is the positive output of LDO-2. The LDO-2 output is regulated to 3.3 V.

J5: GND

This connector is the return connection for LDO-2.

J6: VOUT1

This connector is the positive output of LDO-1. The LDO-1 output is regulated to 1.9 V if jumper JP2 is installed, and 1.8 V if jumper JP2 is not installed.

J7: GND

This connector is the return connection for LDO-1.

2.2 Jumper Description

JP1: EN

This jumper enables or disables the LDO outputs. When the jumper is connected between EN and ON, the power-on sequence is triggered. When it is connected between EN and OFF, the power-down sequence is triggered.

JP2: VSET

This jumper sets the LDO-1 output voltage setting. When the jumper is installed, LDO-1 is set to 1.9 V. When the jumper is not installed, LDO-1 is set to 1.8 V.

JP3: SEQ

This jumper connects the sequence select pin to either logic high or low. When no jumper is installed, the start-up sequence powers up LDO-1 first and LDO-2 second. The shutdown sequence powers down LDO-2 first and then LDO-1. When the jumper is installed, the start-up sequence powers up LDO-2 first and then LDO-1; the shutdown sequence powers down LDO-1 first, followed by LDO-2.

2.3 Test Points

TP1: VDET

This test point is connected to the output of the voltage detector that is monitoring the voltage at the EXT SVS input. When the voltage at EXT SVS drops below approximately 2.35 V, VDET will be logic low. When the voltage at EXT SVS is above approximately 2.4 V, VDET will be logic high. This operates independently of the two LDOs and is not enabled or disabled by EN.

TP2: PG

This test point monitors the voltage at the Power-Good output. When VOUT1 and VOUT2 are both above the respective supervisory threshold voltage for each LDO ($V_{SVS1} = 1.88$ or 1.78 and $V_{SVS2} = 3.26$), PG outputs logic high. If either VOUT1 or VOUT2 falls below its supervisory threshold, then PG outputs logic low.

TP3: $\overline{\text{ERR}}$

This test point is connected to the error output. If any error occurs, then $\overline{\text{ERR}}$ drops to logic low. In the absence of errors, $\overline{\text{ERR}}$ stays at logic high. There are three types of errors that trigger $\overline{\text{ERR}}$: thermal shutdown, undervoltage lockout, and current limit.

Thermal Shutdown

Thermal shutdown occurs when the internal junction temperature rises above +160°C. In this case, $\overline{\text{ERR}}$ only returns to logic high when the temperature drops below +140°C.

Undervoltage Lockout (UVLO)

Undervoltage lockout occurs when VIN drops below 3.6 V. While VIN stays below 3.6 V, $\overline{\text{ERR}}$ is at logic low. Once VIN rises above 3.6 V, $\overline{\text{ERR}}$ rises to logic high.

Current Limit

If either LDO output current limits, then an error occurs. The current limit for LDO-1 is between 750 mA to 1150 mA, while the current limit for LDO-2 is between 700 mA and 1000 mA.

NOTE: The name of pin 11 has changed from $\overline{\text{ERR}}$ to TEST on the datasheet.

TP4: VSET

This test point monitors the VSET logic input to the integrated circuit (IC). VSET determines the output voltage of LDO-1. Logic high sets VOUT1 to 1.9 V, and logic low sets VOUT1 to 1.8 V. Installing JP2 increases VSET from logic low to logic high.

TP5: SEQ

This test point is connected to the SEQ input. It is either logic high or low, depending on whether jumper JP3 is installed or not.

2.4 Other Components

R8

R8 is listed as *not installed* on the schematic and in the bill of materials. It does not need to be installed for the EVM to work properly. Installing a 0- Ω resistor at R8 ties EN to VDET. In this mode, a drop in the EXT SVS voltage, below approximately 2.35 V, disables the LDO-1 and LDO-2 outputs.

WARNING

Uninstall the jumper at JP1 before installing R8. Never have any jumper on JP1 while there is a resistor installed at R8.

C1

A place to install an extra input capacitor is provided at C1. This capacitor is listed as *not installed* on the schematic and in the bill of materials. It does not need to be installed for the EVM to work properly.

C4

C4 programs the delay for the internal SVS-2 of LDO-2.

C5

Programs the soft-start ramp time for LDO-2.

C6

Programs the soft-start ramp time for LDO-1.

C7

C7 programs the delay for the internal SVS-1 of LDO-1.

2.5 Soldering Guidelines

Any solder re-work to modify the EVM for the purpose of repair or other application reasons must be performed using a hot-air system to avoid damaging the IC.

2.6 Equipment Setup

Follow these procedures to properly set up the TPS75005EVM-023 equipment.

- Turn off the input power supply after verifying that its output voltage is set to less than 6.5 V. Connect the positive voltage lead from the input power supply to VIN at the J2 connector of the EVM. Connect the ground lead from the input power supply to GND at the J3 connector of the EVM.
- Turn off the SVS power supply after verifying that its output voltage is set to 2.5 V. Connect the positive voltage lead from the SVS power supply to the EXT SVS input at the J1 connector of the EVM. Connect the ground lead from the SVS power supply to GND at the J3 connector.
- Connect a 0-mA to 500-mA load between the output VOUT1 at connector J6, and GND at connector J7. Connect a 0-mA to 500-mA load between the output VOUT2 at connector J4, and GND at connector J5.

3 Operation

This section provides information about the operation of the TPS75005EVM-023.

3.1 General Operation

- Turn on the input power supply. For initial operation, it is recommended that the input power supply, VIN – J2, be set to 5 V.
- Vary the respective loads and the VIN and EXT SVS voltages as necessary for test purposes.

4 Test Results

This section provides typical performance waveforms for the TPS75005EVM-023 PCB. These tests were performed with $V_{IN} = 5\text{ V}$.

4.1 Start-Up and Shutdown Sequence

Figure 1 and Figure 2 show the start-up and shutdown sequence, respectively, when JP3 is not installed. If JP3 is installed, then VOUT1 and VOUT2 swap the order in which they turn on and off. For these tests, $V_{IN} = 5.0\text{ V}$, with no load. The start-up ramps of VOUT1 and VOUT2 can be adjusted by modifying C6 and C5, respectively.

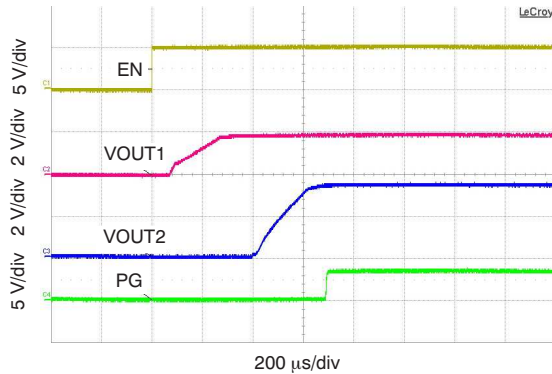


Figure 1. Start-Up Sequence, SEQ Set to Logic Low

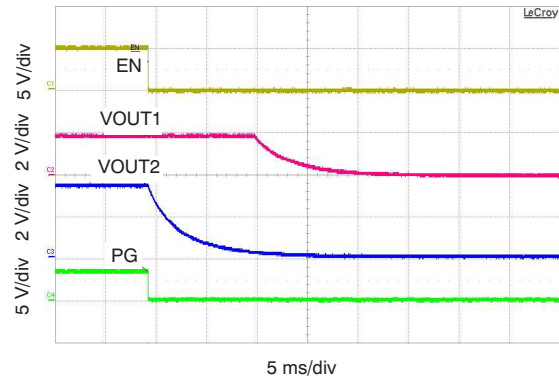


Figure 2. Shutdown Sequence, SEQ Set to Logic Low

4.2 Output Load Transient

Figure 3 and Figure 4 show the load transient responses of LDO-1 and LDO-2, respectively, for a load step from 10 mA to 500 mA. V_{IN} is set at 5.0 V. Figure 3 shows the load transient response at VOUT1 of LDO-1 when VOUT1 is set to 1.8 V. Figure 4 shows the load transient response at VOUT2 of LDO-2.

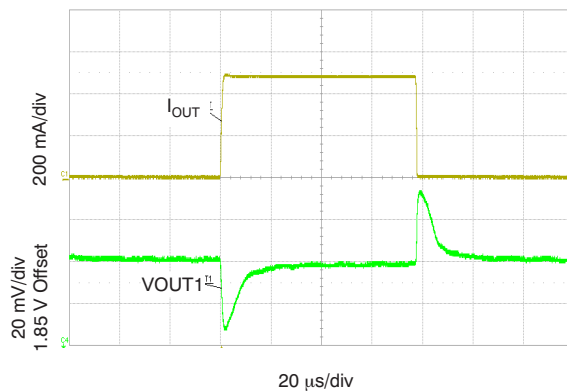


Figure 3. Load Step and Transient Response of LDO-1, VSET Set to Logic Low

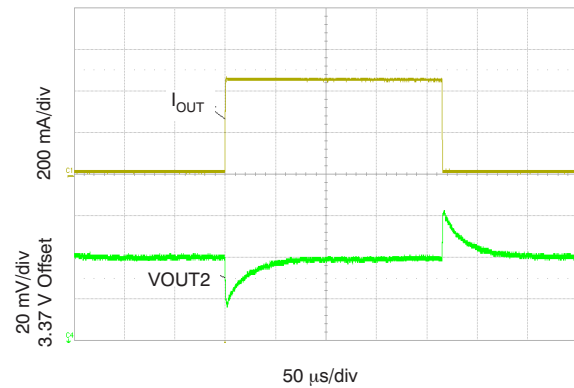


Figure 4. Load Step and Transient Response of LDO-2

4.3 EXT SVS Voltage Monitor Behavior

Figure 5 shows the VDET output as the EXT SVS input drops below regulation voltage.

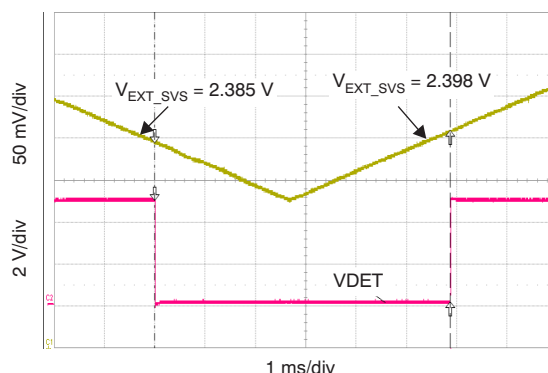


Figure 5. Third Voltage Monitor Behavior (VDET) when EXT SVS Drops Below Regulation

5 Thermal Guidelines and Layout Recommendations

Thermal management is a key component of design of any power converter and is especially important when the power dissipation in the LDO is high. Use the following formula to approximate the maximum power dissipation for a particular ambient temperature:

$$T_J = T_A + P_D \times \theta_{JA}$$

Where T_J is the junction temperature, T_A is the ambient temperature, P_D is the power dissipation in the device (in watts), and θ_{JA} is the thermal resistance from junction to ambient. All temperatures are in degrees Celsius ($^{\circ}\text{C}$). The absolute maximum silicon junction temperature, T_J , must not be allowed to exceed $+150^{\circ}\text{C}$. The steady-state maximum of T_J must not exceed $+125^{\circ}\text{C}$. $+125^{\circ}\text{C}$ is the highest allowable junction temperature at which the TPS75005 can operate for an extended period of time. The layout design must use copper trace and plane areas carefully as thermal sinks (in order to prevent T_J from exceeding the absolute maximum rating under all temperature conditions and voltage conditions across the part).

The designer should carefully consider the thermal design of the PCB for optimal performance over temperature. This EVM employs two copper plane layers as primary spreading layers to sink and spread conducted heat from the TPS75005. Internal layer 1 (shown in Figure 8) is primarily used as a signal/trace layer, but it also contains enough 1-oz copper area to assist with heat dissipation. Internal layer 2 (shown in Figure 9) is an unbroken ground plane (2.3 in by 1.7 in) and thermal spreading layer made of 1-oz copper. The bottom layer (shown in Figure 10) is also a thermal spreading layer, but consists of 2-oz copper.

Table 1 shows the thermal parameters measured in the laboratory for this particular layout. This measurement is made for illustrative purposes only, and should **not** be used to replace the more conservative JEDEC-based thermal characteristics found in the [TPS75005 product data sheet](#). The JEDEC model only uses two 1-oz internal spreading planes (3 in by 3 in). Keep in mind that thermal parameters can vary significantly if there is not sufficient copper to act as a heat sink for the part.

Table 1. Approximate Thermal Resistance, θ_{JA} , and Maximum Power Dissipation

Board	Package	θ_{JA}	Max Dissipation without Derating ($T_A = +25^{\circ}\text{C}$)	Max Dissipation without Derating ($T_A = +70^{\circ}\text{C}$)
TPS75005EVM-023	RGW	18 $^{\circ}\text{C}/\text{W}$	6.944 W	4.444 W

In addition, refer to the Texas Instruments thermal modeling tool, the [PCB Thermal Calculator](#) (available at www.ti.com) to calculate the maximum junction temperature for a selectable internal copper spreading area.

6 Board Layout

This section provides the TPS75005EVM-023 board layout and illustrations.

6.1 Layout

NOTE: Board layouts are not to scale. These figures are intended to show how the board is laid out; they are not intended to be used for manufacturing TPS75005EVM-023 PCBs.

Figure 6 through Figure 10 show the PCB layouts.

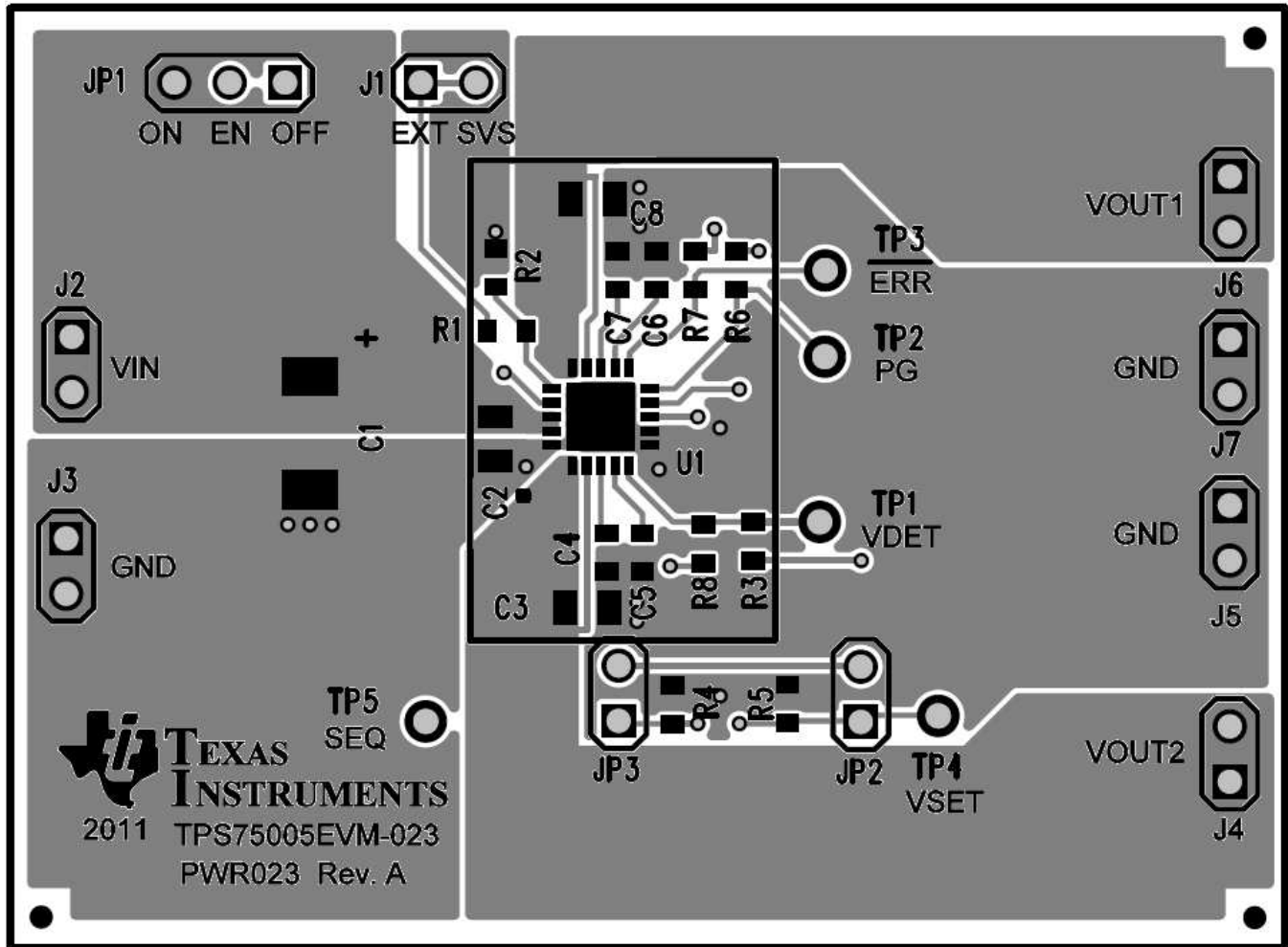


Figure 6. Top Layer with Silk Screen

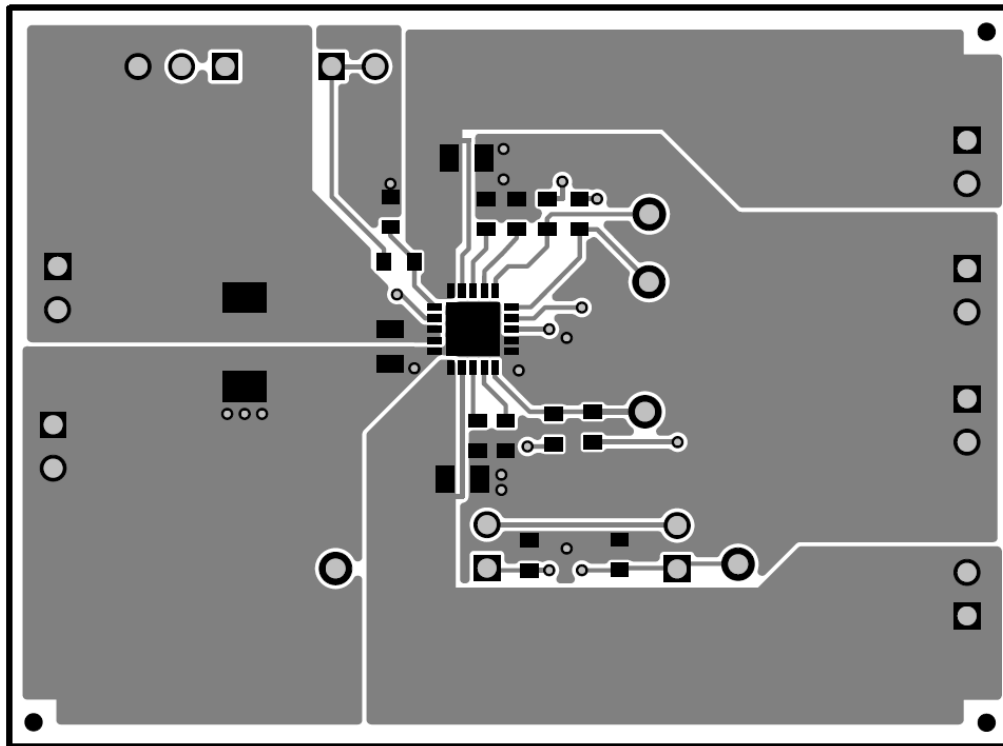


Figure 7. Top Layer

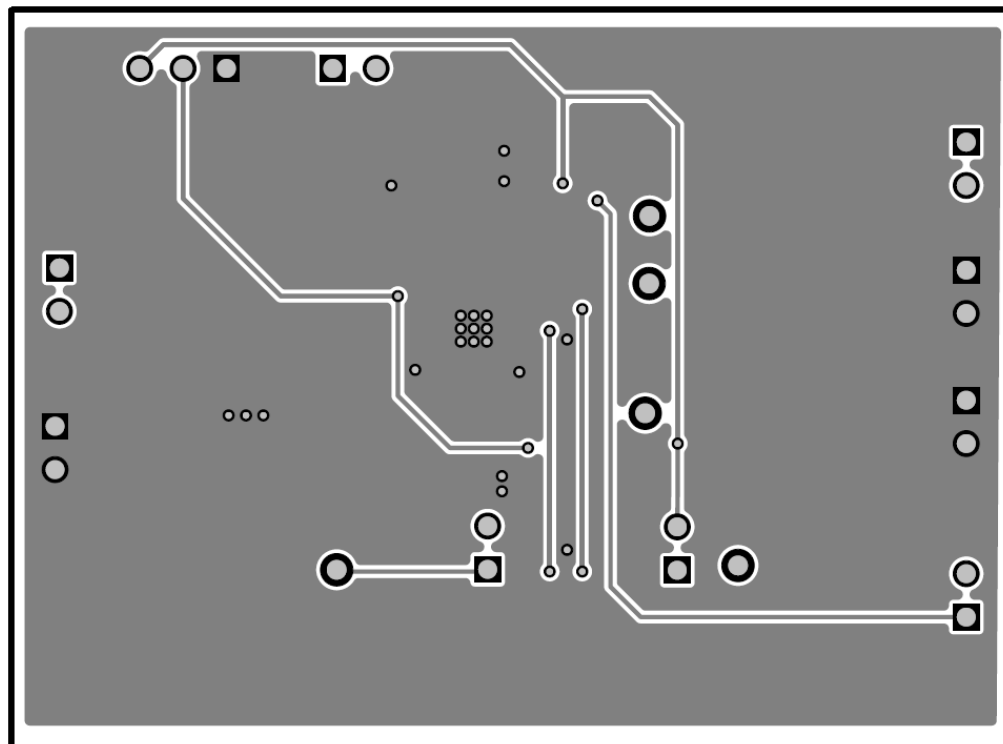


Figure 8. Internal Layer 1

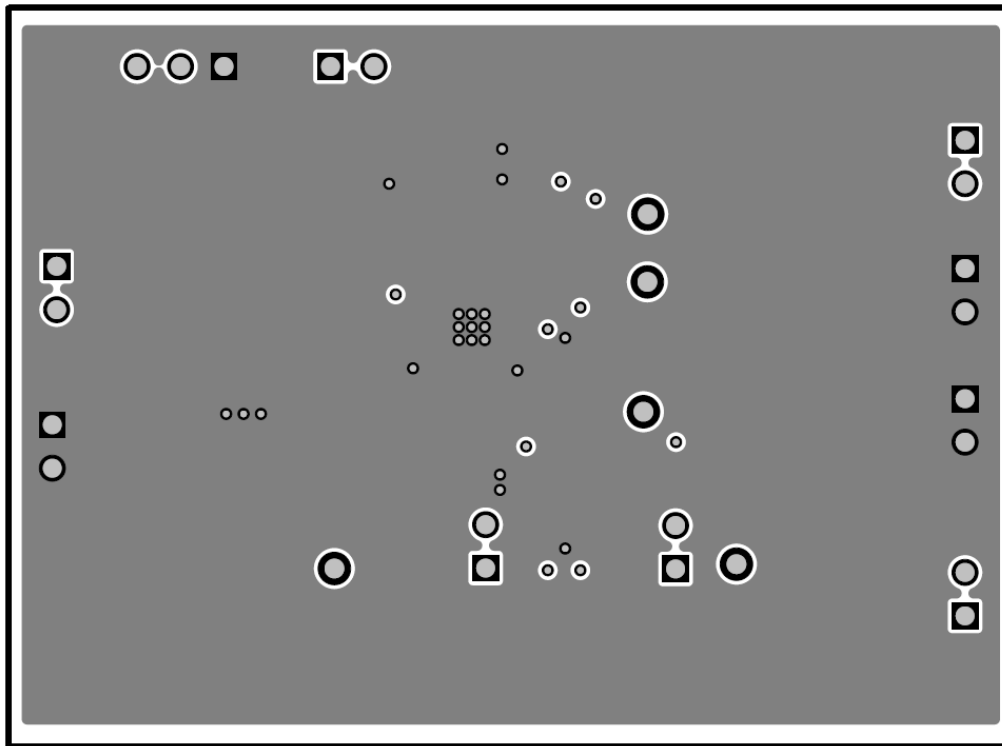


Figure 9. Internal Layer 2

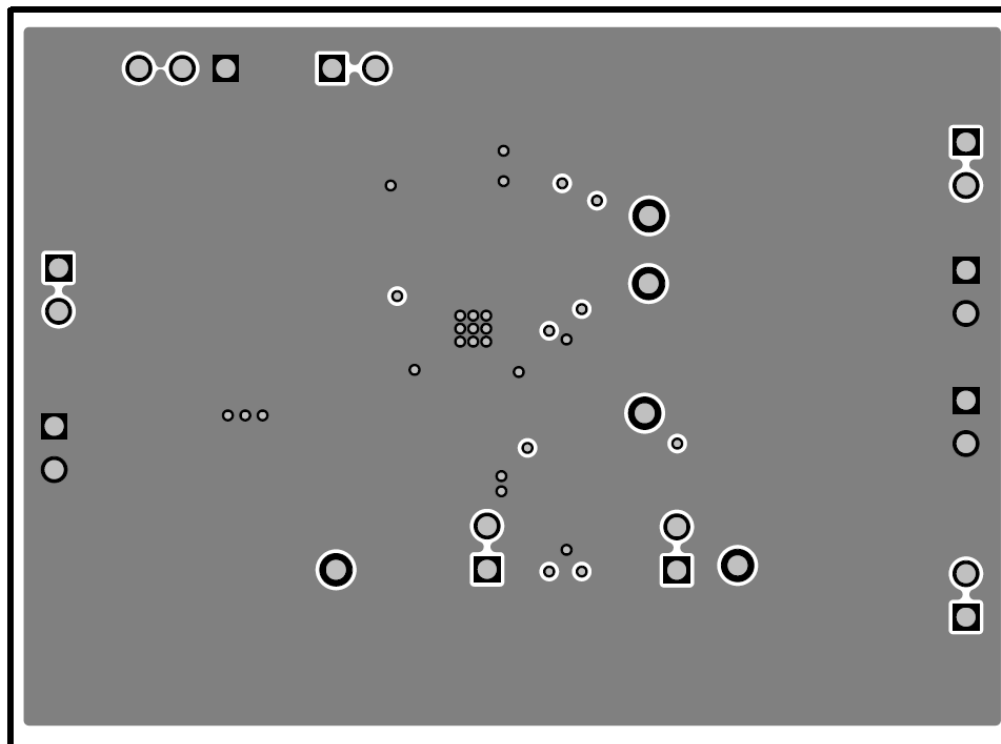


Figure 10. Bottom Layer

7 Schematic and Bill of Materials

This section provides the TPS75005EVM-023 bill of materials and schematic.

7.1 Schematic

The schematic for this EVM is shown in [Figure 11](#).

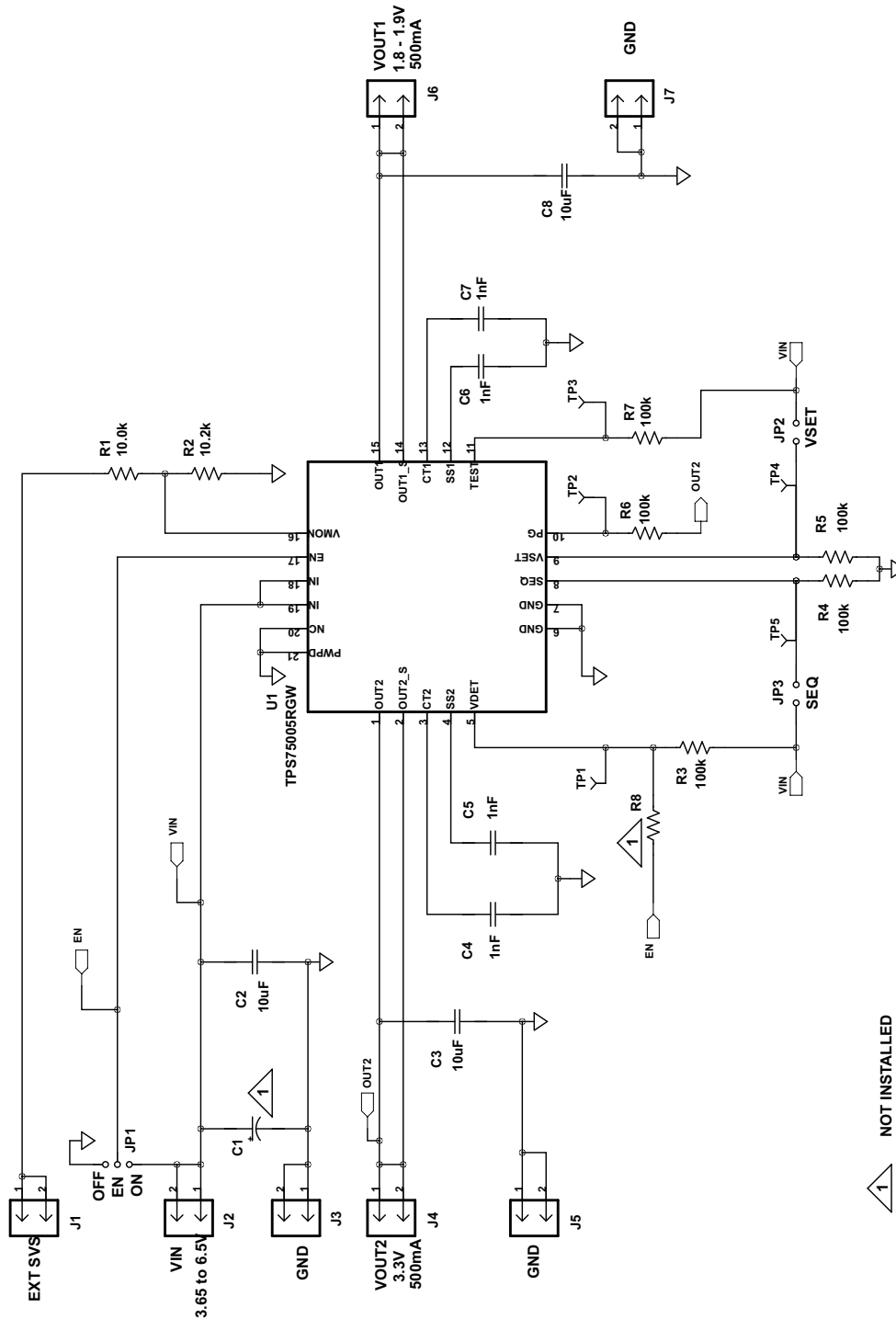


Figure 11. TPS75005EVM-023 Schematic

7.2 Parts List

Table 2 lists the bill of materials for the TPS75005EVM.

Table 2. TPS75005EVM Bill of Materials⁽¹⁾⁽²⁾⁽³⁾

Count	RefDes	Value	Description	Size	Part Number	MFR
0	C1	Open	Capacitor, tantalum, 10 V, 20%	6032	Std	Std
3	C2, C3, C8	10 μ F	Capacitor, ceramic, 10 V, X5R, 20%	0805	Std	Std
4	C4 to C7	1 nF	Capacitor, ceramic, 10 V, X5R, 10%	0603	Std	Std
7	J1 to J7	PEC02SAAN	Header, male 2-pin, 100-mil spacing,	0.100 inch x 2	PEC02SAAN	Sullins
1	JP1	PEC03SAAN	Header, male 3-pin, 100-mil spacing,	0.100 inch x 3	PEC03SAAN	Sullins
2	JP2-3	PEC02SAAN	Header, male 2-pin, 100-mil spacing,	0.100 inch x 2	PEC02SAAN	Sullins
1	R1	10.0 k Ω	Resistor, chip, 1/16W, 1%	0603	Std	Std
1	R2	10.2 k Ω	Resistor, chip, 1/16W, 1%	0603	Std	Std
5	R3 to R7	100 k Ω	Resistor, chip, 1/16W, 1%	0603	Std	Std
0	R8	Open	Resistor, chip, 1/16W, 1%	0603	Std	Std
5	TP1 to TP5	5000	Test point, red, through-hole color keyed	0.100 x 0.100 inch	5000	Keystone
1	U1	TPS75005RGW	IC, dual 500-mA LDO and Triple voltage rail monitor	QFN-20	TPS75005RGW	TI
3	--		Shunt, 100-mil, black	0.100	929950-00	3M
1	--		PCB, 1.7 in x 2.3 in x 0.062 in		PWR023	Any

⁽¹⁾ These assemblies are ESD sensitive. ESD precautions shall be observed.

⁽²⁾ These assemblies must be clean and free from flux and all contaminants. Use of *no-clean flux* is not acceptable.

⁽³⁾ These assemblies must comply with workmanship standards IPC-A-610 Class 2.

Evaluation Board/Kit Important Notice

Texas Instruments (TI) provides the enclosed product(s) under the following conditions:

This evaluation board/kit is intended for use for **ENGINEERING DEVELOPMENT, DEMONSTRATION, OR EVALUATION PURPOSES ONLY** and is not considered by TI to be a finished end-product fit for general consumer use. Persons handling the product(s) must have electronics training and observe good engineering practice standards. As such, the goods being provided are not intended to be complete in terms of required design-, marketing-, and/or manufacturing-related protective considerations, including product safety and environmental measures typically found in end products that incorporate such semiconductor components or circuit boards. This evaluation board/kit does not fall within the scope of the European Union directives regarding electromagnetic compatibility, restricted substances (RoHS), recycling (WEEE), FCC, CE or UL, and therefore may not meet the technical requirements of these directives or other related directives.

Should this evaluation board/kit not meet the specifications indicated in the User's Guide, the board/kit may be returned within 30 days from the date of delivery for a full refund. **THE FOREGOING WARRANTY IS THE EXCLUSIVE WARRANTY MADE BY SELLER TO BUYER AND IS IN LIEU OF ALL OTHER WARRANTIES, EXPRESSED, IMPLIED, OR STATUTORY, INCLUDING ANY WARRANTY OF MERCHANTABILITY OR FITNESS FOR ANY PARTICULAR PURPOSE.**

The user assumes all responsibility and liability for proper and safe handling of the goods. Further, the user indemnifies TI from all claims arising from the handling or use of the goods. Due to the open construction of the product, it is the user's responsibility to take any and all appropriate precautions with regard to electrostatic discharge.

EXCEPT TO THE EXTENT OF THE INDEMNITY SET FORTH ABOVE, NEITHER PARTY SHALL BE LIABLE TO THE OTHER FOR ANY INDIRECT, SPECIAL, INCIDENTAL, OR CONSEQUENTIAL DAMAGES.

TI currently deals with a variety of customers for products, and therefore our arrangement with the user **is not exclusive.**

TI assumes **no liability for applications assistance, customer product design, software performance, or infringement of patents or services described herein.**

Please read the User's Guide and, specifically, the Warnings and Restrictions notice in the User's Guide prior to handling the product. This notice contains important safety information about temperatures and voltages. For additional information on TI's environmental and/or safety programs, please contact the TI application engineer or visit www.ti.com/esh.

No license is granted under any patent right or other intellectual property right of TI covering or relating to any machine, process, or combination in which such TI products or services might be or are used.

FCC Warning

This evaluation board/kit is intended for use for **ENGINEERING DEVELOPMENT, DEMONSTRATION, OR EVALUATION PURPOSES ONLY** and is not considered by TI to be a finished end-product fit for general consumer use. It generates, uses, and can radiate radio frequency energy and has not been tested for compliance with the limits of computing devices pursuant to part 15 of FCC rules, which are designed to provide reasonable protection against radio frequency interference. Operation of this equipment in other environments may cause interference with radio communications, in which case the user at his own expense will be required to take whatever measures may be required to correct this interference.

EVM Warnings and Restrictions

It is important to operate this EVM within the input voltage range of 3.65 V to 6.5 V and the output voltage range of 0 V to 1.9 V for VOUT1 and 0 V to 3.3 V for VOUT2 (fixed outputs).

Exceeding the specified input range may cause unexpected operation and/or irreversible damage to the EVM. If there are questions concerning the input range, please contact a TI field representative prior to connecting the input power.

Applying loads outside of the specified output range may result in unintended operation and/or possible permanent damage to the EVM. Please consult the EVM User's Guide prior to connecting any load to the EVM output. If there is uncertainty as to the load specification, please contact a TI field representative.

During normal operation, some circuit components may have case temperatures greater than +95°C. The EVM is designed to operate properly with certain components above +95°C as long as the input and output ranges are maintained. These components include but are not limited to linear regulators, switching transistors, pass transistors, and current sense resistors. These types of devices can be identified using the EVM schematic located in the EVM User's Guide. When placing measurement probes near these devices during operation, please be aware that these devices may be very warm to the touch.

IMPORTANT NOTICE

Texas Instruments Incorporated and its subsidiaries (TI) reserve the right to make corrections, modifications, enhancements, improvements, and other changes to its products and services at any time and to discontinue any product or service without notice. Customers should obtain the latest relevant information before placing orders and should verify that such information is current and complete. All products are sold subject to TI's terms and conditions of sale supplied at the time of order acknowledgment.

TI warrants performance of its hardware products to the specifications applicable at the time of sale in accordance with TI's standard warranty. Testing and other quality control techniques are used to the extent TI deems necessary to support this warranty. Except where mandated by government requirements, testing of all parameters of each product is not necessarily performed.

TI assumes no liability for applications assistance or customer product design. Customers are responsible for their products and applications using TI components. To minimize the risks associated with customer products and applications, customers should provide adequate design and operating safeguards.

TI does not warrant or represent that any license, either express or implied, is granted under any TI patent right, copyright, mask work right, or other TI intellectual property right relating to any combination, machine, or process in which TI products or services are used. Information published by TI regarding third-party products or services does not constitute a license from TI to use such products or services or a warranty or endorsement thereof. Use of such information may require a license from a third party under the patents or other intellectual property of the third party, or a license from TI under the patents or other intellectual property of TI.

Reproduction of TI information in TI data books or data sheets is permissible only if reproduction is without alteration and is accompanied by all associated warranties, conditions, limitations, and notices. Reproduction of this information with alteration is an unfair and deceptive business practice. TI is not responsible or liable for such altered documentation. Information of third parties may be subject to additional restrictions.

Resale of TI products or services with statements different from or beyond the parameters stated by TI for that product or service voids all express and any implied warranties for the associated TI product or service and is an unfair and deceptive business practice. TI is not responsible or liable for any such statements.

TI products are not authorized for use in safety-critical applications (such as life support) where a failure of the TI product would reasonably be expected to cause severe personal injury or death, unless officers of the parties have executed an agreement specifically governing such use. Buyers represent that they have all necessary expertise in the safety and regulatory ramifications of their applications, and acknowledge and agree that they are solely responsible for all legal, regulatory and safety-related requirements concerning their products and any use of TI products in such safety-critical applications, notwithstanding any applications-related information or support that may be provided by TI. Further, Buyers must fully indemnify TI and its representatives against any damages arising out of the use of TI products in such safety-critical applications.

TI products are neither designed nor intended for use in military/aerospace applications or environments unless the TI products are specifically designated by TI as military-grade or "enhanced plastic." Only products designated by TI as military-grade meet military specifications. Buyers acknowledge and agree that any such use of TI products which TI has not designated as military-grade is solely at the Buyer's risk, and that they are solely responsible for compliance with all legal and regulatory requirements in connection with such use.

TI products are neither designed nor intended for use in automotive applications or environments unless the specific TI products are designated by TI as compliant with ISO/TS 16949 requirements. Buyers acknowledge and agree that, if they use any non-designated products in automotive applications, TI will not be responsible for any failure to meet such requirements.

Following are URLs where you can obtain information on other Texas Instruments products and application solutions:

Products

Audio	www.ti.com/audio
Amplifiers	amplifier.ti.com
Data Converters	dataconverter.ti.com
DLP® Products	www.dlp.com
DSP	dsp.ti.com
Clocks and Timers	www.ti.com/clocks
Interface	interface.ti.com
Logic	logic.ti.com
Power Mgmt	power.ti.com
Microcontrollers	microcontroller.ti.com
RFID	www.ti-rfid.com
OMAP Mobile Processors	www.ti.com/omap
Wireless Connectivity	www.ti.com/wirelessconnectivity

Applications

Communications and Telecom	www.ti.com/communications
Computers and Peripherals	www.ti.com/computers
Consumer Electronics	www.ti.com/consumer-apps
Energy and Lighting	www.ti.com/energy
Industrial	www.ti.com/industrial
Medical	www.ti.com/medical
Security	www.ti.com/security
Space, Avionics and Defense	www.ti.com/space-avionics-defense
Transportation and Automotive	www.ti.com/automotive
Video and Imaging	www.ti.com/video

TI E2E Community Home Page

e2e.ti.com

Mailing Address: Texas Instruments, Post Office Box 655303, Dallas, Texas 75265
Copyright © 2011, Texas Instruments Incorporated