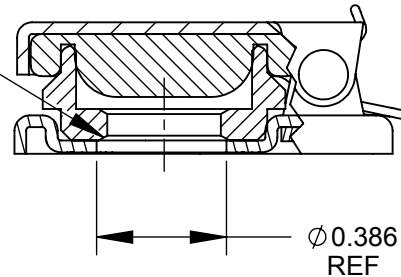


NOTES:

1. MATERIALS:
COVER & BASE - STEEL
FINISH MIL-F-14072 (SIG. - C)
BASIC FINISH #P-211 TYPE I EXPOSURE
FINAL FINISH PER TT-E-529 ENAMEL
SYNTHETIC SEMI-GLOSS BLACK PER - A1

GASKET - SYNTHETIC RUBBER
TORSION SPRING - STAINLESS STEEL
AXLE - COPPER ALLOY, NICKEL PLATED
NUT - COPPER ALLOY, NICKEL PLATED

3/8-32 UNEF-2B
THREAD



2. HEX NUT SHIPPED UNASSEMBLED
3. THIS PRODUCT IS RoHS COMPLIANT.

CUSTOMER DRAWING

					<div>UNLESS OTHERWISE SPECIFIED</div> <div>1. ALL DIMENSIONS IN INCHES</div> <div>- TWO PLACE DECIMALS ±0.02</div> <div>- THREE PLACE DECIMALS ±0.005</div>	THIS DRAWING DESCRIBES A DESIGN CONSIDERED PROPRIETARY IN NATURE, DEVELOPED AND MANUFACTURED BY SWITCHCRAFT INC. AND IS RELEASED ON A CONFIDENTIAL BASIS FOR IDENTIFICATION PURPOSES ONLY.								
						SIZE	WIDTH		MULT	LBS/M	TEMPER			
						FINISH				MATERIAL				
						SPEC No.				SPEC No.				
						FIRST USED ON			SCALE		<div>Switchcraft®</div>			
B	26771	05/13/11	JEB	TJK				1.75:1						
A	25429	9-19-07	RF	TJK										
					DATE DRAWN	BY	CHKD	APVD		SHEET 1 OF 1				
					9-19-06	RF	RF	TJK						
							9-19-06	9-19-07						
REV	ECO NUMBER	DATE	BY	APVD	NAME					PART No.		REV		
REVISIONS					DO NOT SCALE DRAWING					JAX COVER, RoHS				
										515X		B		

DO NOT SCALE DRAWING

SolidWorks CAD File



Mouser Electronics

Authorized Distributor

Click to View Pricing, Inventory, Delivery & Lifecycle Information:

[Switchcraft:](#)

[515X](#)