

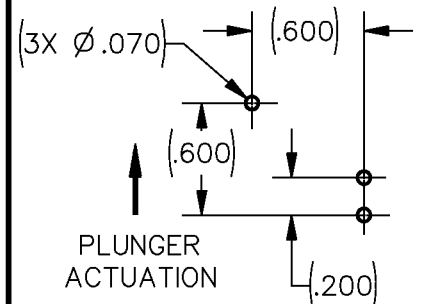
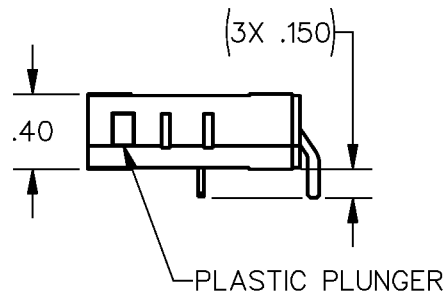
FED.MFG.CODE 91929

SWITCH – BASIC

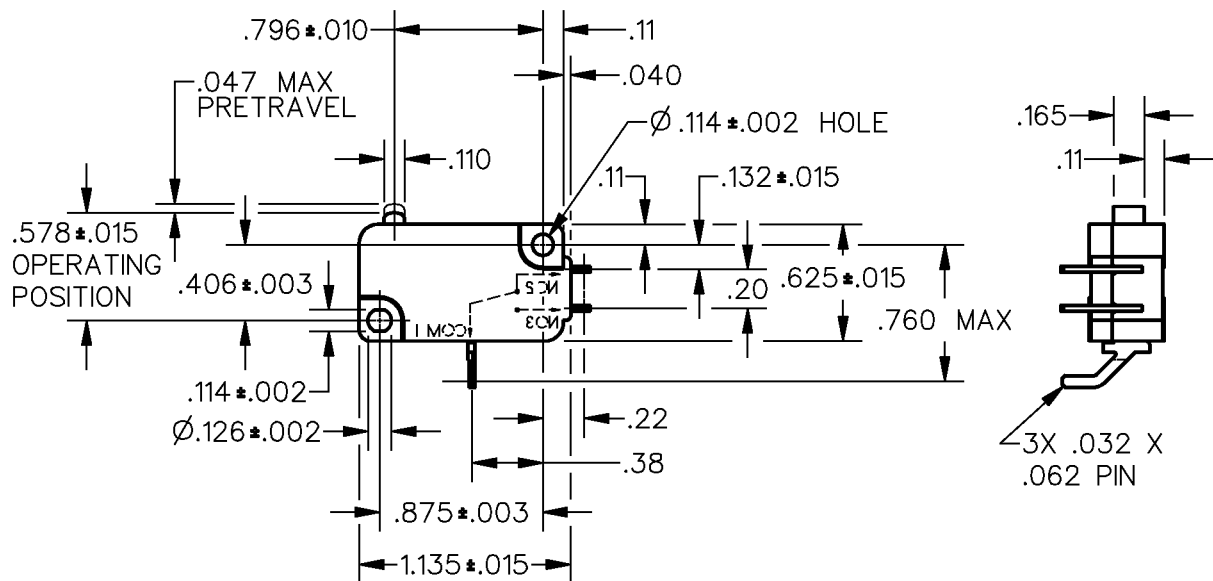
CATALOG LISTING

V7-1E17P02

CW-B5992



TERMINATION PATTERN



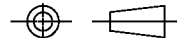
NOTES



- 1 - TERMINATION MAY REQUIRE STUFFING INTO BOARD
2 - TERMINALS SILVER PLATED

ANSI Y14.5M-1982 APPLIES

THIS DRAWING COVERS A PROPRIETARY ITEM AND IS THE PROPERTY OF MICRO SWITCH, A DIVISION OF HONEYWELL. THIS DRAWING IS NOT TO BE COPIED OR USED WITHOUT THE APPROVAL OF MICRO SWITCH.

THIRD ANGLE PROJECTION



CHARACTERISTICS	ELECTRICAL DATA	SCALE FULL	DO NOT SCALE PRINT
OPERATING FORCE— — — 150 GRAMS MAX	CONTACT ARRANGEMENT S P D T L216 10A 1/3HP 125, <u>250</u> OR 277 VAC 1/2A 125 VDC 1/4A 250 VDC; 4A 125 VAC "L"	UNLESS OTHERWISE SPECIFIED TOLERANCES ARE	
RELEASE FORCE— — — 25 GRAMS MIN		ONE PLACE (.0)	± .030
DIFFERENTIAL TRAVEL — — — .002—.010		TWO PLACE (.00)	± .015
OVERTRAVEL — — — — — .050 MIN		THREE PLACE (.000)	± .005
FREE POSITION — — — — — .625 MAX		ANGLES	±
RELEASE TRAVEL — — — — — .007 MIN	 	WEIGHT	

Mouser Electronics

Authorized Distributor

Click to View Pricing, Inventory, Delivery & Lifecycle Information:

[Honeywell:](#)

[V7-1E17P02](#)