

POWER RELAY

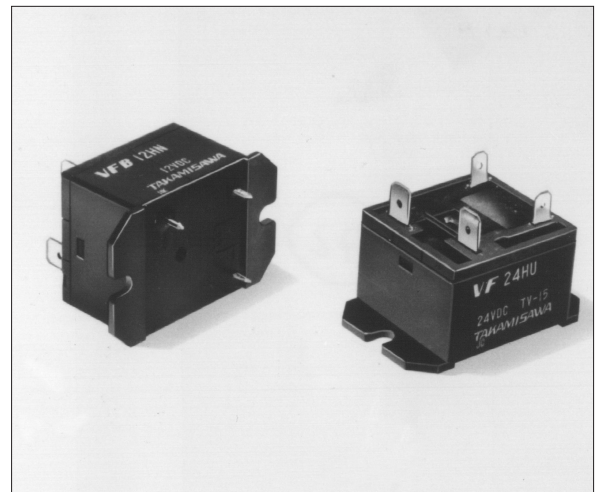
1 POLE—20, 25, 30 A (HEAVY POWER CONTROL)

VF SERIES

RoHS compliant

■ FEATURES

- UL, CSA, VDE recognized TV-15 rated
- 1 Form A (SPST-NO) contact
- Heavy duty 20 to 30 A small power relay
- High inrush current and high surge voltage
 - Inrush current 65 A
 - Surge strength 10,000 V
- Printed circuit coil terminals type available
- Small package meets high density mounting requirement
- RoHS compliant since date code: 0435L2
Please see page 7 for more information



■ ORDERING INFORMATION

[Example] VF B - 6 H U
(a) (b) (*) (c) (d) (e)

(a)	Series Name	VF : VF Series
(b)	Terminal	Nil : TopAll tab-terminal B : TopTab-terminal (contacts) : Bottom...PCB-terminal (coil and movable contact) D : TopTab-terminal (coil) Screw tight terminal (contacts) P : TopScrew tight terminal (contacts) : Bottom...PCB terminal (coil and movable contact)
(c)	Nominal Voltage	Refer to the COIL DATA CHARAT
(d)	Contact Rating	H : 30 A M : 25 A L : 20 A
(e)	Standard	U : UL, CSA, VDE rating acquired

Note: Actual marking omits hyphen (-) of (*)

■ SAFETY STANDARD AND FILE NUMBERS

UL508, 873 (File No. E56140)

C22.2 No. 1, No. 14 (File No. LR35579)

VDE 0435 (File No. 11039-4940-1016)

Please note that UL/CSA rating may differ from the standard rating.

Type	Nominal voltage	Contact rating
VF- () L	3 to 60 VDC	TV-15 120 VAC 1 HP 125 VAC/250 VAC 20 A 250 VAC resistive 15A 250 VAC inductive (PF=0.7)
VF- () M	3 to 60 VDC	TV-15 120 VAC 1.5 HP 250 VAC 25 A 250 VAC resistive
VF- () H	3 to 60 VDC	TV-15 120 VAC 2 HP 250 VAC 30 A 250 VAC resistive 22.5A 250 VAC inductive (PF=0.7)

■ SPECIFICATIONS

Item			30 A Type	25 A Type	20 A Type
			VFD, VFP- () H	VF () - () M	VF () - () L
Contact	Arrangement		1 form A (SPST-NO)		
	Material		Silver alloy		
	Style		Single		
	Resistance (initial)		Maximum 30m Ω (at 1 A 6 VDC)		
	Rating	Resistive	30 A 250 VAC	25 A 250 VAC	20 A 250 VAC
		Motor	2 HP 250 VAC	1.5 HP 250 VAC	1 HP 250 VAC
	Maximum Carrying Current		30 A	25 A	20 A
	Maximum Switching Power		7,500 VA	6,250 VA	5,000 VA
	Maximum Switching Voltage		250 VAC		
	Maximum Switching Current		30 A	25 A	20 A
	Minimum Switching Load*1		100 mA 5 VDC		
Coil	Nominal Power (at 20°C)		1.20 to 1.25 W		
	Operate Power (at 20°C)		1.59 to 0.62 W		
	Operating Temperature		-30°C to +65°C (no frost) (refer to the CHARACTERISTIC DATA)		
Time Value	Operate (at nominal voltage)		Maximum 20 ms		
	Release (at nominal voltage)		Maximum 5 ms		
Insulation Dielectric Strength	Resistance (at 500 VDC)		Minimum 1,000 MΩ		
		between open contacts	1,200 VAC 1 minute		
		between coil and contacts	4,000 VAC 1 minute		
	Surge Strength		10,000 V (at 1.2 x 50 μs)		
Life	Mechanical		5 × 10 ⁶ operations minimum		
	Electrical (at contact rating)		1 × 10 ⁵ operations minimum (resistive load)		
			2 × 10 ⁵ operations minimum (motor load)		
Other	Vibration Resistance	Misoperation	10 to 55 Hz (double amplitude of 1.5 mm)		
		Endurance	10 to 55 Hz (double amplitude of 1.5 mm)		
	Shock Resistance	Misoperation	200 m/s ² (11 ±1 ms)		
		Endurance	1,000 m/s ² (6 ±1 ms)		

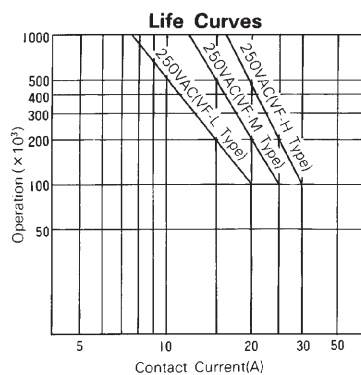
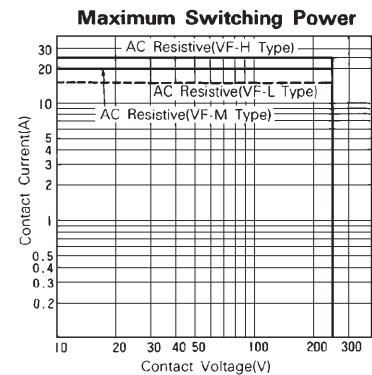
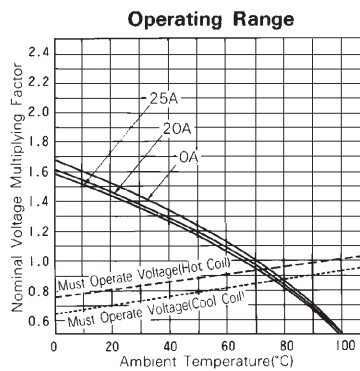
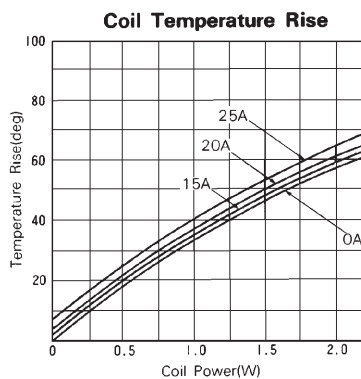
*1 Minimum switching loads mentioned above are reference values. Please perform the confirmation test with the actual load before production since reference values may vary according to switching frequencies, environmental conditions and expected reliability levels.

COIL DATA CHART

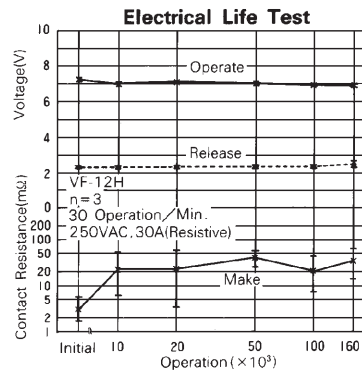
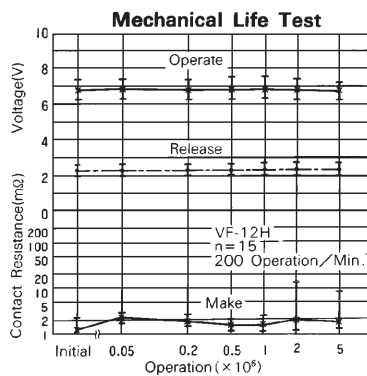
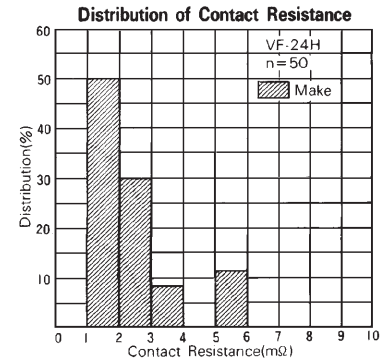
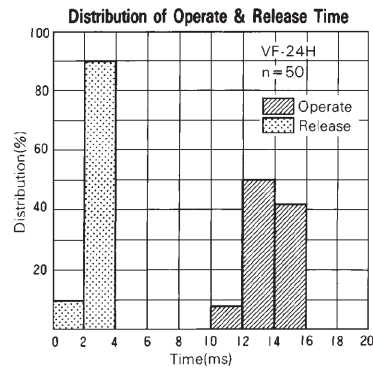
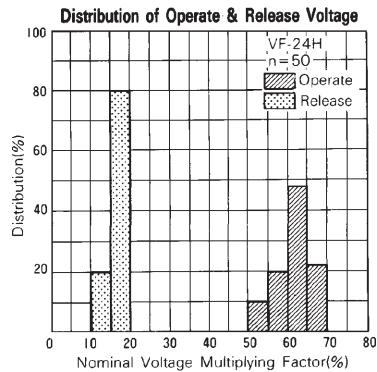
MODEL			Nominal voltage	Coil resistance ($\pm 10\%$)	Must operate voltage	Must release voltage	Nominal power
30 A Type	25 A Type	20 A Type					
VF (D or P) - 3H	VF () - 3M	VF () - 3L	3 VDC	7.5 Ω	2.1 VDC	0.3 VDC	1.2 W
VF (D or P) - 5H	VF () - 5M	VF () - 5L	5 VDC	20 Ω	3.5 VDC	0.5 VDC	1.25 W
VF (D or P) - 6H	VF () - 6M	VF () - 6L	6 VDC	30 Ω	4.2 VDC	0.6 VDC	1.2 W
VF (D or P) - 9H	VF () - 9M	VF () - 9L	9 VDC	67 Ω	6.3 VDC	0.9 VDC	1.2 W
VF (D or P) -12H	VF () -12M	VF () -12L	12 VDC	120 Ω	8.4 VDC	1.2 VDC	1.2 W
VF (D or P) -18H	VF () -18M	VF () -18L	18 VDC	270 Ω	12.6 VDC	1.8 VDC	1.2 W
VF (D or P) -24H	VF () -24M	VF () -24L	24 VDC	480 Ω	16.8 VDC	2.4 VDC	1.2 W
VF (D or P) -48H	VF () -48M	VF () -48L	48 VDC	1,920 Ω	33.6 VDC	4.8 VDC	1.2 W
VF (D or P) -60H	VF () -60M	VF () -60L	60 VDC	3,000 Ω	42.0 VDC	6.0 VDC	1.2 W

Note: All values in the table are measured at 20°C

CHARACTERISTIC DATA



REFERENCE DATA



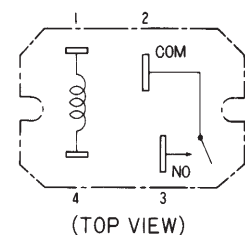
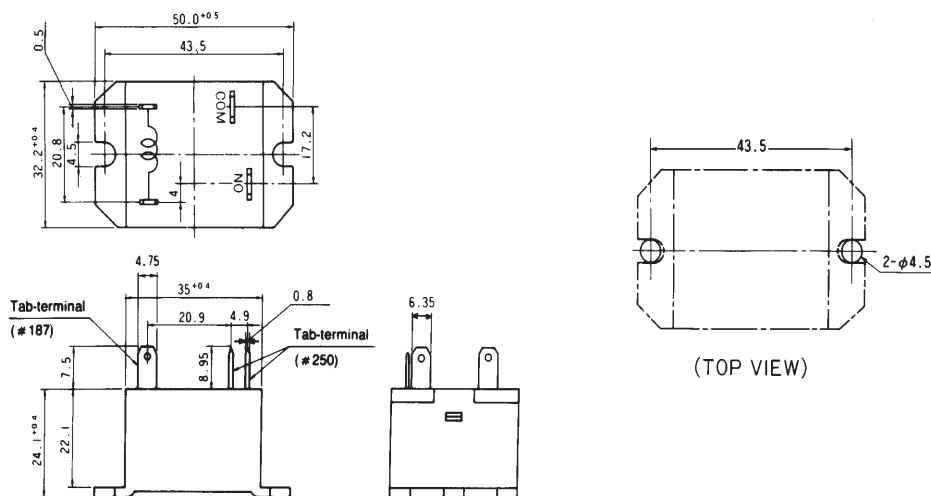
DIMENSIONS

Dimensions

Schematics

PC board mounting hole layout

VF type

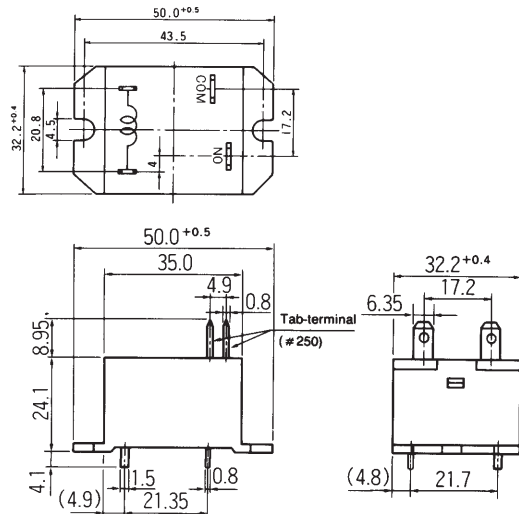


Unit: mm

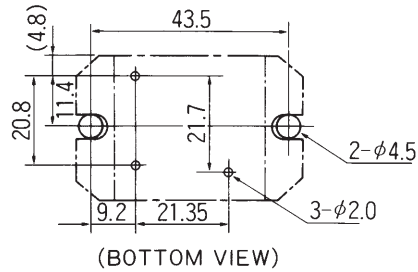
VF SERIES

● Dimensions

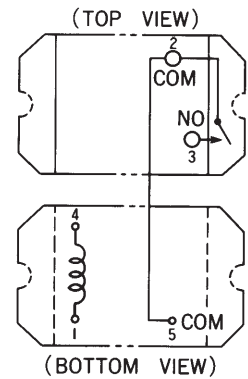
VFB type



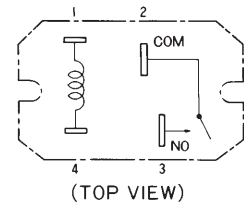
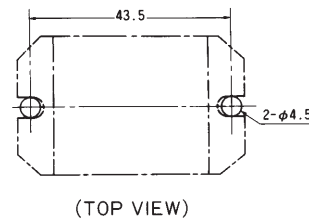
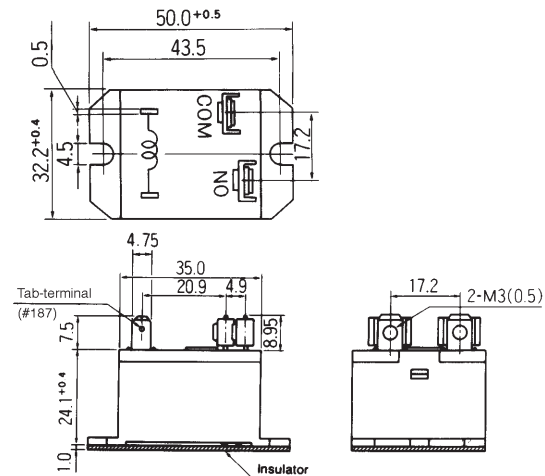
● Schematics



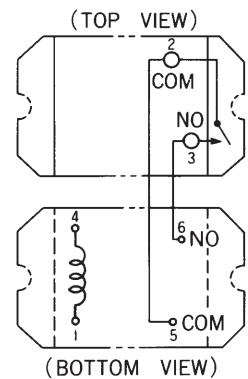
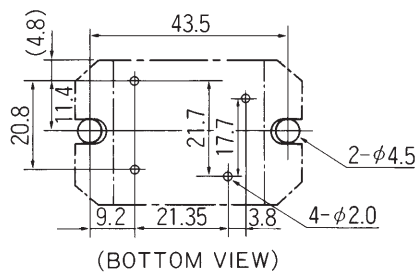
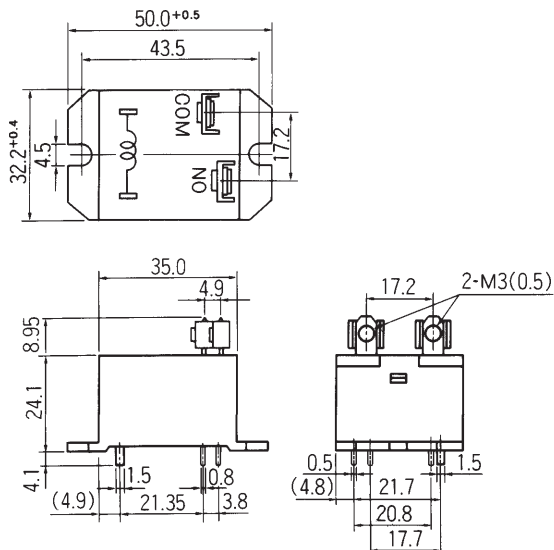
● PC board mounting hole layout



VFD type



VFP type



Unit: mm

RoHS Compliance and Lead Free Relay Information

1. General Information

- Relays produced after the specific date code that is indicated on each data sheet are lead-free now. Most of our signal and power relays are lead-free. Please refer to Lead-Free Status Info. (<http://www.fujitsu.com/us/downloads/MICRO/fcai/relays/lead-free-letter.pdf>)
- Lead free solder paste currently used in relays is Sn-3.0Ag-0.5Cu.
- All signal and most power relays also comply with RoHS. Please refer to individual data sheets. Relays that are RoHS compliant do not contain the 5 hazardous materials that are restricted by RoHS directive (lead, mercury, chromium IV, PBB, PBDE).
- It has been verified that using lead-free relays in leaded assembly process will not cause any problems (compatible).
- "LF" is marked on each outer and inner carton. (No marking on individual relays).
- To avoid leaded relays (for lead-free sample, etc.) please consult with area sales office.
- We will ship leaded relays as long as the leaded relay inventory exists.

Note: Cadmium was exempted from RoHS on October 21, 2005. (Amendment to Directive 2002/95/EC)

2. Recommended Lead Free Solder Profile

- Recommended solder paste Sn-3.0Ag-0.5Cu.

Reflow Solder condition

Flow Solder condition:

Pre-heating: maximum 120°C
Soldering: dip within 5 sec. at
260°C solder bath

Solder by Soldering Iron:

Soldering Iron
Temperature: maximum 360°C
Duration: maximum 3 sec.

We highly recommend that you confirm your actual solder conditions

3. Moisture Sensitivity

- Moisture Sensitivity Level standard is not applicable to electromechanical relays.

4. Tin Whisker

- Dipped SnAgCu solder is known as low risk tin whisker. No considerable length whisker was found by our in house test.

Fujitsu Components International Headquarter Offices

Japan

Fujitsu Component Limited
Gotanda-Chuo Building
3-5, Higashigotanda 2-chome, Shinagawa-ku
Tokyo 141, Japan
Tel: (81-3) 5449-7010
Fax: (81-3) 5449-2626
Email: promothq@ft.ed.fujitsu.com
Web: www.fcl.fujitsu.com

North and South America

Fujitsu Components America, Inc.
250 E. Caribbean Drive
Sunnyvale, CA 94089 U.S.A.
Tel: (1-408) 745-4900
Fax: (1-408) 745-4970
Email: marcom@fcai.fujitsu.com
Web: <http://www.fujitsu.com/us/services/edevices/components/>

Europe

Fujitsu Components Europe B.V.
Diamantlaan 25
2132 WV Hoofddorp
Netherlands
Tel: (31-23) 5560910
Fax: (31-23) 5560950
Email: info@fceu.fujitsu.com
Web: <http://www.fujitsu.com/emea/services/components/>

Asia Pacific

Fujitsu Components Asia Ltd.
102E Pasir Panjang Road
#04-01 Citilink Warehouse Complex
Singapore 118529
Tel: (65) 6375-8560
Fax: (65) 6273-3021
Email: fcal@fcal.fujitsu.com
Web: <http://www.fujitsu.com/sg/services/micro/components/>

©2005 Fujitsu Components America, Inc. All rights reserved. All trademarks or registered trademarks are the property of their respective owners.

Fujitsu Components America does not warrant that the content of datasheet is error free. In a continuing effort to improve our products Fujitsu Components America, Inc. reserves the right to change specifications/datasheets without prior notice. Rev. 12/12/2005.