



SMT Current Sensor – T6522-AL



This low cost transformer is designed for use at 50 kHz to 300 kHz to sense continuous currents up to 3 Amps. The current windings can be connected in series to provide twice the output sensitivity. It is packaged in a small footprint, low profile, surface mount ceramic case that makes it ideal for pick and place operations.

Applications include power supply feedback control, motor protection, overload sensing and detecting load drop or shutdown.

To request free evaluation samples, contact Coilcraft or visit www.coilcraft.com.

Part number ¹	Turns ratio ¹	Sensed current I_{in} ² max	Inductance ³ min (mH)	DCR max (Ohms)	Isolation Pri-sec (Vrms)
T6522-AL_	1:50	3 Arms	3.4	Pins 1,2 – 5,6: 0.006 Pins 3 – 4: 0.700	500

1. When ordering, please specify **packaging** code:

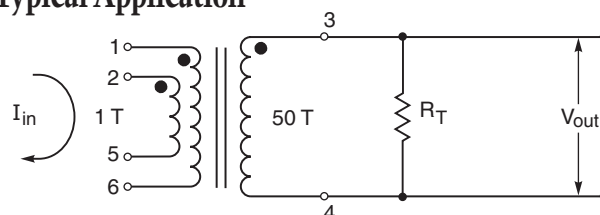
T6522-AL D

Packaging: **D** = 13" machine ready reel. EIA-481 embossed plastic tape (750 per full reel).

B = Less than full reel. In tape, but not machine ready. To have a leader and trailer added (\$25 charge), use code letter D instead.

- The two sensd current windings may be connected in parallel (1:50) to provide up to 3 A sensing capability, or connected in series (2:50) to provide twice the output sensitivity.
- Inductance measured between pins 3 and 4 at 100 kHz, 0.1 Vrms.
- Operating temperature range -40°C to $+85^{\circ}\text{C}$.
- Electrical specifications at 25°C .

Typical Application



Varying the terminating resistance (R_T) increases or decreases output voltage/Ampere in conductor.

Coilcraft®

Specifications subject to change without notice.
Please check our website for latest information.

Document 369-1 Revised 11/05/03

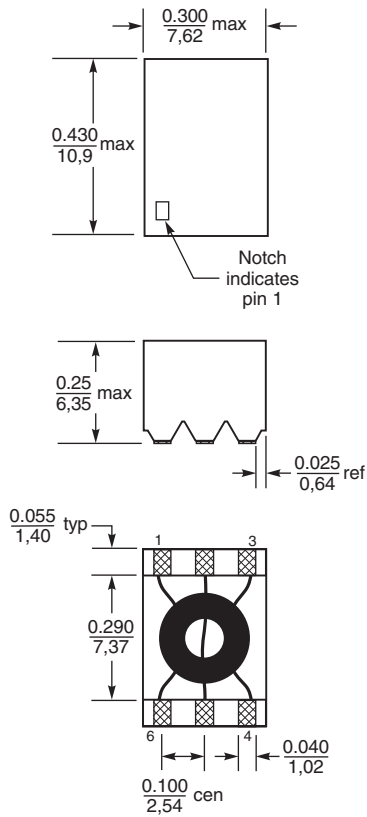
1102 Silver Lake Road Cary, Illinois 60013 Phone 847/639-6400 Fax 847/639-1469

E-mail info@coilcraft.com Web <http://www.coilcraft.com>

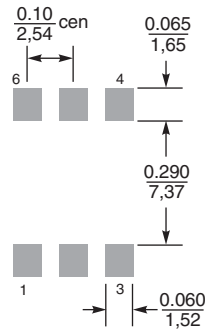


SMT Current Sensor – T6522-AL

Dimensions

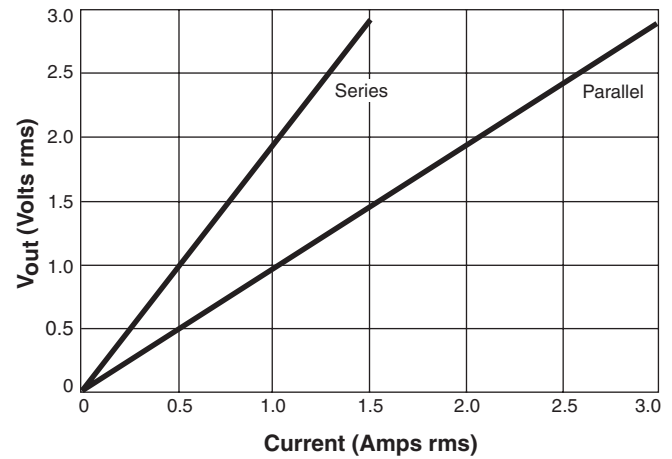


Recommended Land Pattern



Weight: 0.9 g
Termination: Tin-silver-copper over silver-palladium-platinum
Tape and reel: 750/13" reel 24 mm tape width
 For packaging data see Tape and Reel Specifications section.

Typical Response (with $R_T = 50 \text{ Ohm}$)



Coilcraft[®]

Specifications subject to change without notice.
 Please check our website for latest information.

Document 369-2 Revised 05/24/05

1102 Silver Lake Road Cary, Illinois 60013 **Phone** 847/639-6400 **Fax** 847/639-1469

E-mail info@coilcraft.com **Web** <http://www.coilcraft.com>