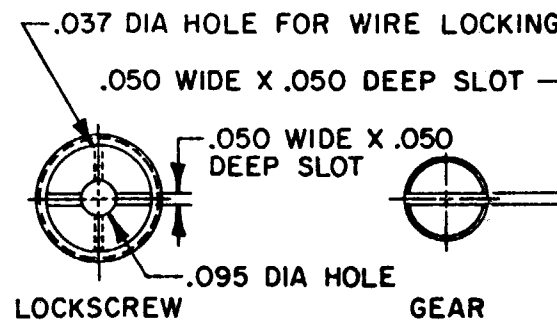
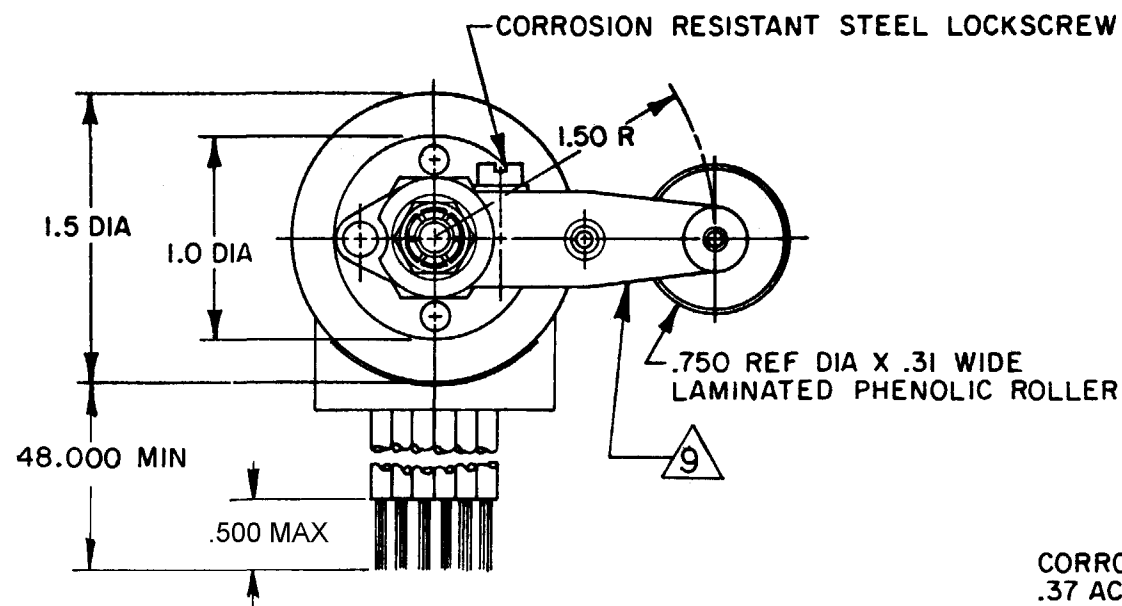


**MICRO SWITCH**  
FREEPORT, ILLINOIS U.S.A.  
A DIVISION OF HONEYWELL  
FED. MFG. CODE 91929

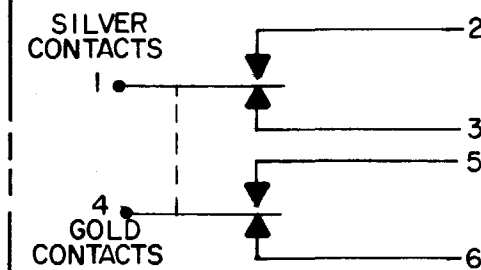
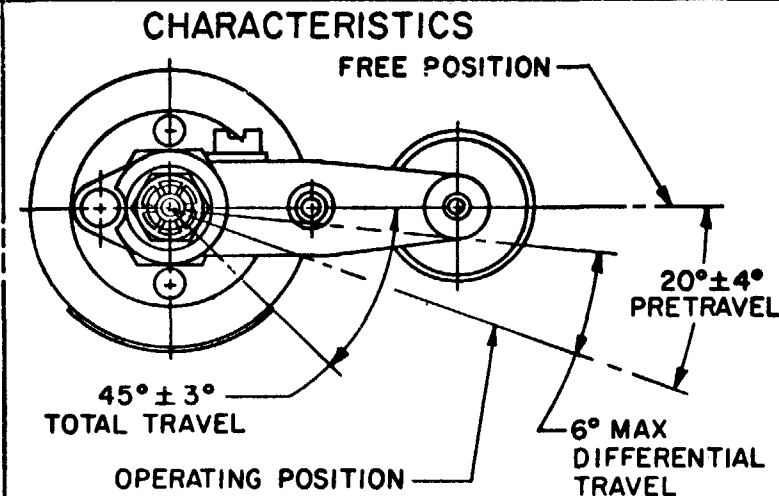
## SWITCH - ENCLOSED

CATALOG LISTING  
**35EN25-4**

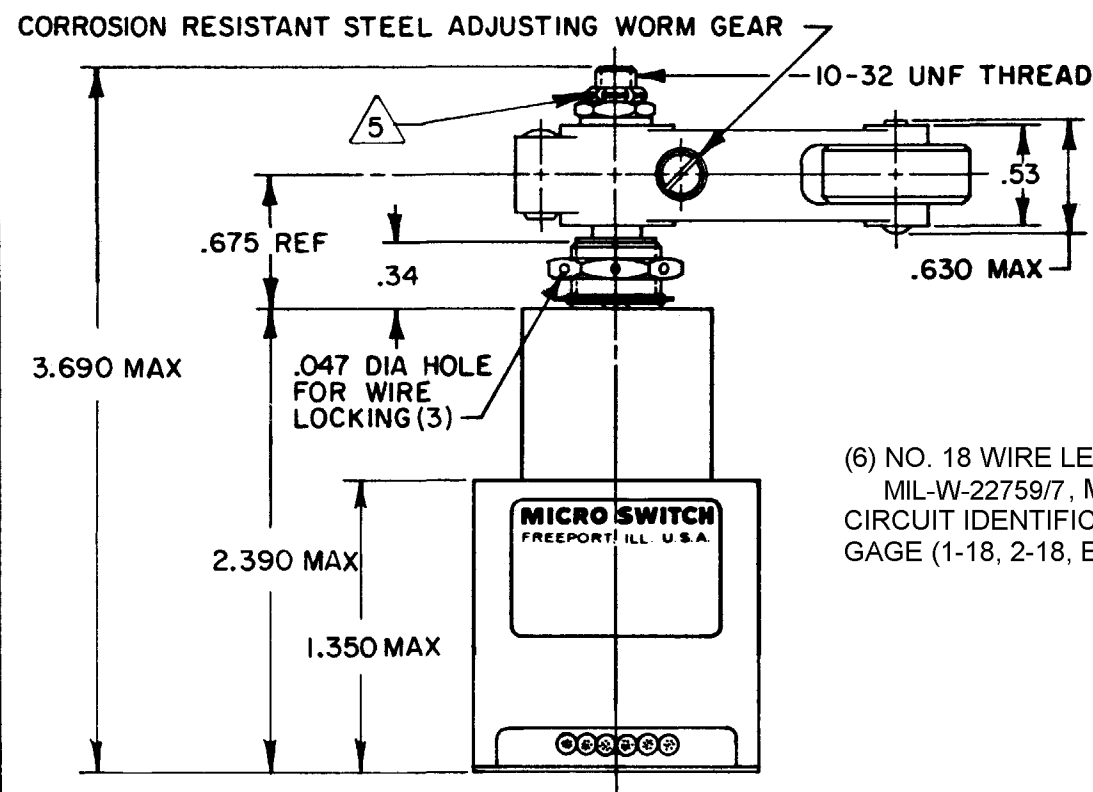


ROLLER LEVER MAY BE ADJUSTED FOR AN INFINITE NUMBER OF POSITIONS THRU 360°. ADJUSTMENT IS MADE BY LOOSENING THE LOCK NUT AND THEN THE LOCKSCREW AND TURNING GEAR UNTIL LEVER IS IN DESIRED POSITION. LOCKSCREW AND LOCK NUT ON SHAFT IS THEN TIGHTENED TO POSITIVELY LOCK LEVER IN POSITION.

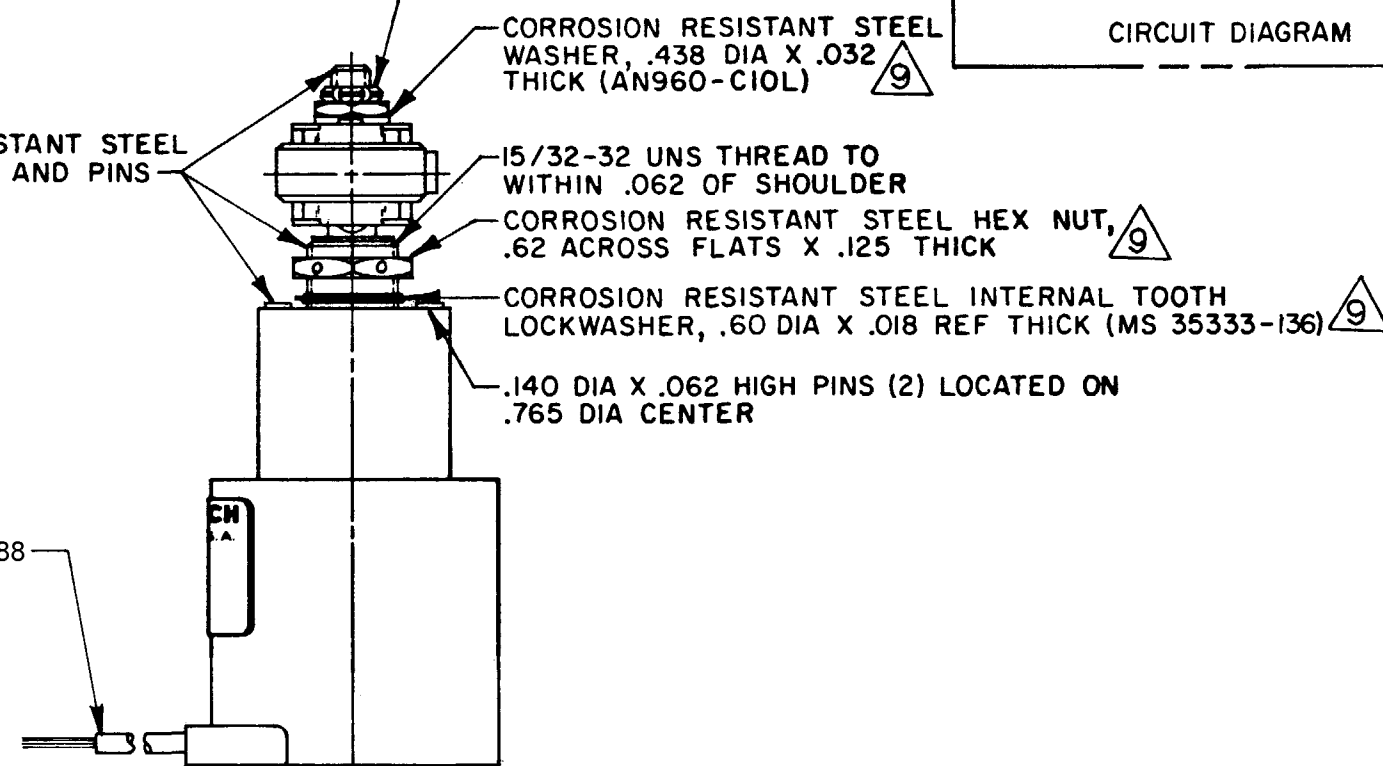
### LEVER ADJUSTMENT DETAIL SCALE 2 TO 1



CIRCUIT DIAGRAM



CORROSION RESISTANT STEEL SHAFT, BUSHING AND PINS



(6) NO. 18 WIRE LEAD PER MIL-W-22759/7, MARKED WITH CIRCUIT IDENTIFICATION AND WIRE GAGE (1-18, 2-18, ETC) PER MIL-W-5088

### NOTES

- 1 CORROSION RESISTANT STEEL ENCLOSURE
- 2 SWITCH SEALED PER MIL-PRF-8805 SYMBOL 4
- 3 CIRCUIT DIAGRAM, CATALOG LISTING, AND DATE CODE ARE SHOWN ON NAMEPLATE
- 4 TOTAL TRAVEL OF ROLLER LEVER IS 45°±3° IN CLOCKWISE DIRECTION ONLY, WITH SPRING RETURN TO NEUTRAL DO NOT APPLY MORE THAN 20-25 INCH-POUNDS OF TORQUE WHEN TIGHTENING LOCKING NUT
- 5 RATINGS APPLY TO CIRCUITS 1, 2, 3, BASIC SWITCH HAS SILVER CONTACTS
- 6 RATINGS APPLY TO CIRCUITS 4, 5, 6, BASIC SWITCH HAS BIFURCATED GOLD CONTACTS
- 7 SHAFT SEAL MATERIAL E.P. RUBBER
- 8 HARDWARE MAY BE PACKAGED UNASSEMBLED PER MIL-PRF-8805

THIS DRAWING COVERS A PROPRIETARY ITEM AND IS THE PROPERTY OF MICRO SWITCH, A DIVISION OF HONEYWELL. THIS DRAWING IS NOT TO BE COPIED OR USED WITHOUT THE APPROVAL OF MICRO SWITCH.

THIRD ANGLE PROJECTION

SCALE FULL

DO NOT SCALE PRINT

TOLERANCES  
APPLY TO DESIGN UNITS. CONVERSIONS ARE ONLY FOR REFERENCE. UNLESS NOTED, TOLERANCES ARE ±

NO. PLACES	DM.	TOL.	DM.	TOL.
ONE PLACE	X	1/100	X	0.01
TWO PLACES	X,X	0.01/0.01	X,X	0.001/0.01
THREE PLACES	X,X,X	0.001/0.001	X,X,X	0.0001/0.001

DESIGN UNITS  
SI METRIC ☐ US CUSTOMARY ☒

RAW MATERIAL—COMMERCIAL STANDARD  
MICRO SWITCH STANDARDS APPLY  
DIMENSIONS ARE TO BE MET BEFORE PROTECTIVE COATINGS ARE APPLIED

WEIGHT 14.9 OZ MAX

### CHARACTERISTICS

OPERATING TORQUE— — — — — 12-25 IN LB  
RELEASE TORQUE  
9 IN LB MIN (AS ADJUSTED)  
4 IN LB MIN (AFTER 25,000 OPERATIONS)

PRETRAVEL  
DIFFERENTIAL TRAVEL  
OVERTRAVEL  
FREE POSITION  
SEE DETAIL

### ELECTRICAL DATA

CONTACT ARRANGEMENT  
SEE CIRCUIT DIAGRAM

28 VDC	SEA LEVEL		50,000 FT.	
	RES	IND	RES	IND
SILVER/6 CONTACTS	4	2	4	2
GOLD/7 CONTACTS	1	0.5	1	0.5

# Mouser Electronics

Authorized Distributor

Click to View Pricing, Inventory, Delivery & Lifecycle Information:

[Honeywell:](#)

[35EN25-4](#)