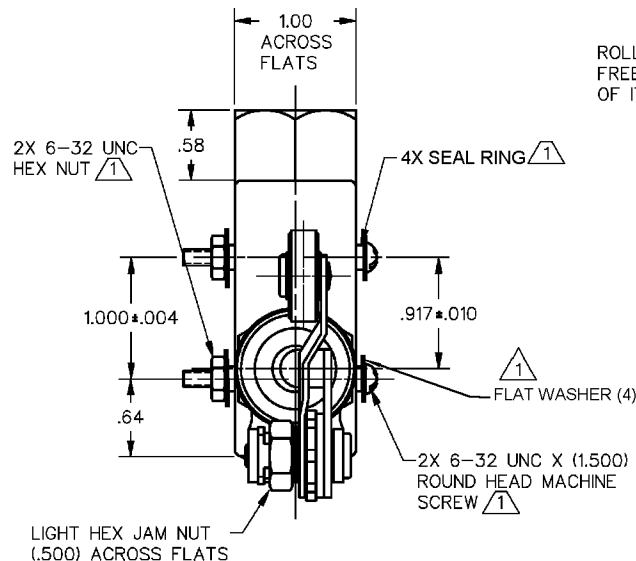


HONEYWELL
PART NUMBER

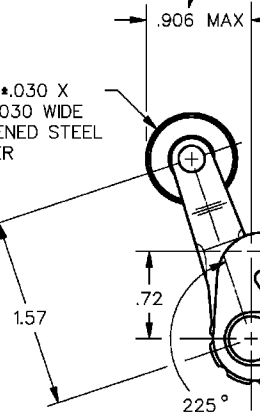
BME6-2RN2

REV	DOCUMENT	CHANGED BY	CHECK
A	0026406	BS 30NOV06	KSR

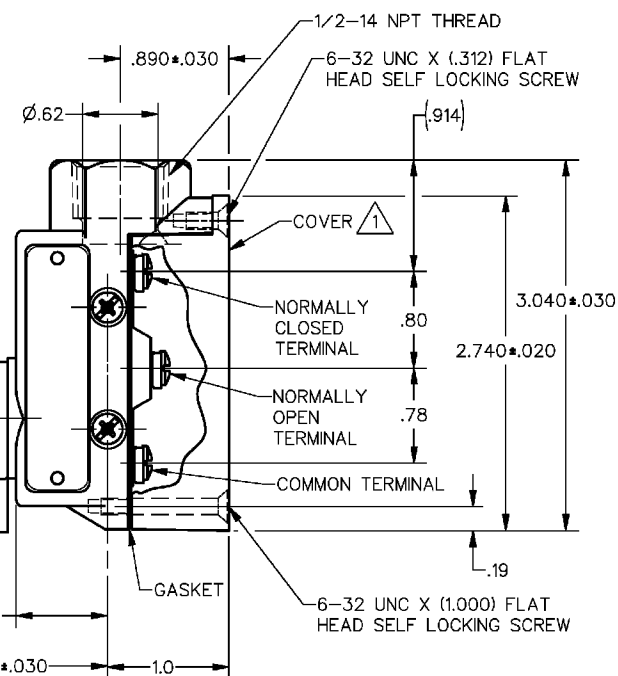


ELASTOMER PLUNGER SEAL SECURED TO COMPONENTS BY EXTERNAL BANDING

ROLLER LEVER IS SHOWN IN ITS FREE POSITION AT ONE EXTREME OF ITS ADJUSTABLE RANGE

Ø.750 ± .030 X
.250 ± .030 WIDE
HARDENED STEEL
ROLLER

ROLLER LEVER MAY BE POSITIVELY LOCKED AT INTERVALS OF APPROXIMATELY 0.2° WITHIN A RANGE OF 225° (1238 POSITIONS)



CHARACTERISTICS

OPERATING FORCE ——— 10-20 OZ

RELEASE FORCE ——— 6 OZ MIN

PRETRAVEL ——— .188 MAX

DIFFERENTIAL TRAVEL — .0004-.0020

OVERTRAVEL ——— .219 MIN

BASIC SWITCH REPLACEMENT — BM-2RN770

ELECTRICAL DATA

CONTACT ARRANGEMENT
S P D T

L101 22A 125, 250 OR 480 VAC

1/4HP 125 VAC; 1/2HP 250 VAC

1/2A 125 VDC; 1/4A 250 VDC

CE 1.5A, 240 Vac



NOTE

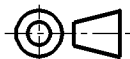
- 1 FURNISHED UNASSEMBLED
- 2 ROLLER LEVER BRACKET ASSEMBLY MAY BE SET AT ANY POSITION AROUND AXIS OF PLUNGER
- 3 3X 6-32 UNC X (.219) BINDING HEAD TERMINAL SCREW AND CUPWASHER
- 4 SEAL RATING: NEMA 1,3,4
IP66

DESIGN UNITS: INCH

TOLERANCES UNLESS NOTED:

NO PLACE	X	±	0.040
ONE PLACE	.X	±	0.030
TWO PLACE	.XX	±	0.015
THREE PLACE	.XXX	±	0.005
FOUR PLACE	.XXXX	±	0.0005
ANGLES		±	2

THIRD ANGLE PROJECTION



DRAWN GWE 02OCT06

CHECK KSR 23NOV06

THIS DRAWING COVERS A PROPRIETARY ITEM AND IS THE PROPERTY OF HONEYWELL. THIS DRAWING IS NOT TO BE COPIED OR USED WITHOUT THE PERMISSION OF HONEYWELL.

INTERPRET PER ASME Y14.5M-1994

OTHER HONEYWELL ENGINEERING STANDARDS MAY APPLY

RASTER

Honeywell

TITLE

SWITCH - ENCLOSED

SIZE	TYPE	DRAWING NAME	REV
A	I	BME6-2RN2	A
SCALE	WEIGHT .71 LB	SHEET 1 OF 1	