

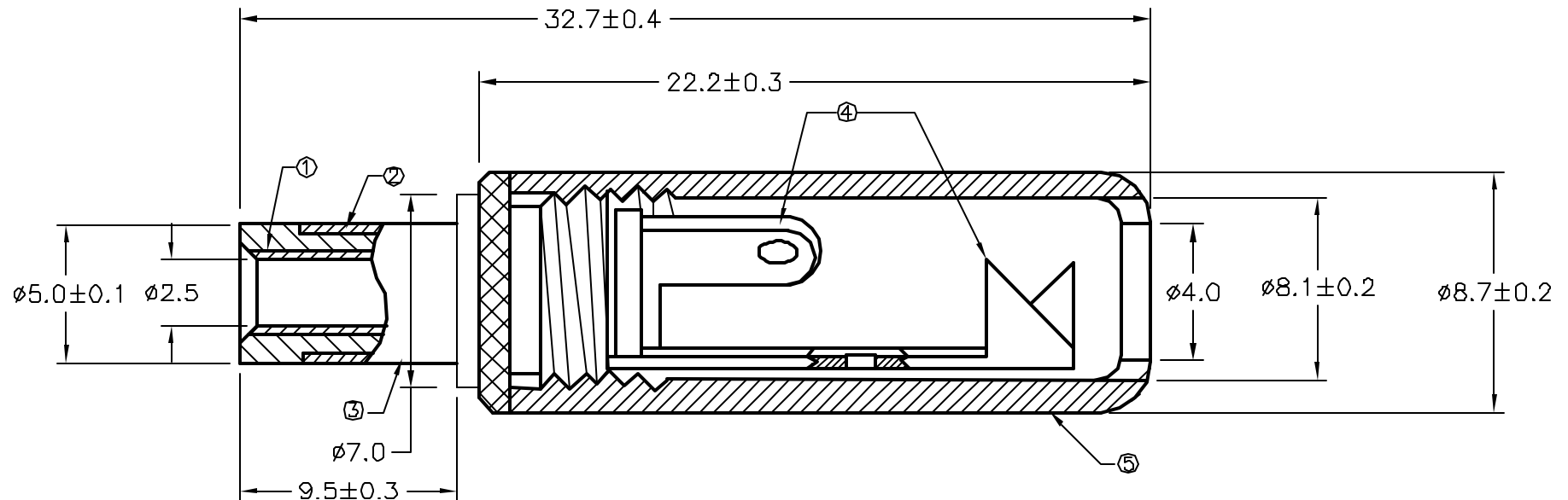
ALL RIGHTS RESERVED. NO PORTION OF THIS PUBLICATION, WHETHER IN WHOLE OR IN PART
CAN BE REPRODUCED WITHOUT THE EXPRESS WRITTEN CONSENT OF SPC TECHNOLOGY.



REVISIONS

DOC. NO. SPC-F005 * Effective: 12/21/08 * DCP No: 880

| DCP # | REV | DESCRIPTION | DRAWN | DATE | CHECKD | DATE | APPRVD | DATE |
|-------|-----|-------------|-------|---------|--------|----------|--------|----------|
| 1937 | A | RELEASED | JWM | 11/6/00 | JN | 06/03/08 | JN | 06/03/08 |
| | | | | | | | | |



| ITEM | DESCRIPTION | QTY | MATERIAL/FINISH |
|------|------------------|-----|----------------------|
| 1 | MOUNTING BUSHING | 1 | BRASS, NICKEL PLATED |
| 2 | INSULATION RING | 1 | POM PLASTIC |
| 3 | BODY | 1 | BRASS, NICKEL PLATED |
| 4 | TERMINAL | 2 | BRASS, NICKEL PLATED |
| 5 | CAP | 1 | ABS PLASTIC |

DISCLAIMER:
ALL STATEMENTS AND TECHNICAL INFORMATION CONTAINED HEREIN ARE BASED UPON INFORMATION
AND/OR TESTS WE BELIEVE TO BE ACCURATE AND RELIABLE. SINCE CONDITIONS OF USE ARE
BEYOND OUR CONTROL, THE USER SHALL DETERMINE THE SUITABILITY OF THE PRODUCT FOR THE
INTENDED USE AND ASSUME ALL RISK AND LIABILITY WHATSOEVER IN CONNECTION THEREWITH.

UNLESS OTHERWISE
SPECIFIED,
DIMENSIONS ARE
FOR REFERENCE
PURPOSES ONLY.

| | |
|---------------|----------|
| DRAWN BY: | DATE: |
| Jeff McVicker | 3/31/99 |
| CHECKED BY: | DATE: |
| Jason Nash | 06/03/08 |
| APPROVED BY: | DATE: |
| Jason Nash | 06/03/08 |



SPC TECHNOLOGY

DRAWING TITLE:

DC Power Plug

| SIZE | DWG. NO. | ELECTRONIC FILE | REV |
|------------|---------------------|-----------------|------|
| A | SPC21361 | 11M0556.dwg | A |
| SCALE: NTS | U.O.M.: INCHES [mm] | SHEET: 1 | OF 1 |