

# Customer Information Sheet

DRAWING No.: H3482-XX

SHEET 2 OF 2

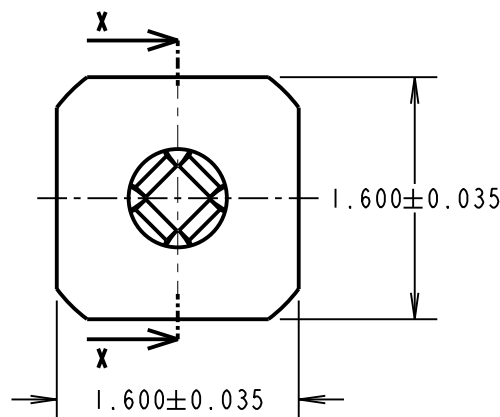
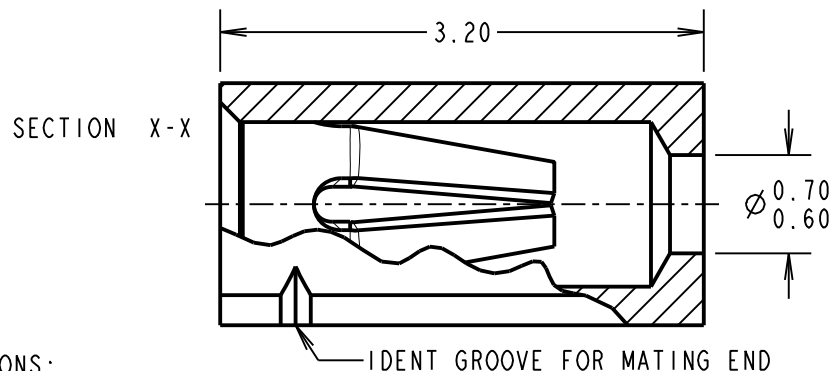
IF IN DOUBT - ASK

(C)

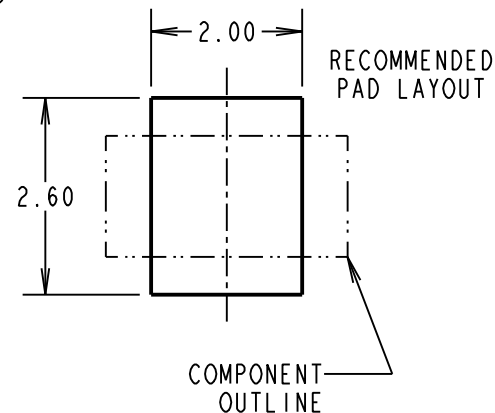
NOT TO SCALE

THIRD ANGLE PROJECTION

ALL DIMENSIONS IN mm



NOTES:  
1. FOR TAPE AND REELED VERSION,  
SEE DRAWING H3482-XXR.



## SPECIFICATIONS:

### MATERIALS:

SHELL = BRASS CW614N M TO BS EN 12164

CLIP = BERYLLIUM COPPER C17200 HM

### FINISH:

01 = 0.10-0.15µ GOLD CLIP,

3.5-5.0µ 90/10 TIN/LEAD SHELL (10% LEAD MIN)

42 = 0.10-0.15µ GOLD CLIP, 3.5-5.0µ 100% TIN SHELL

### ELECTRICAL:

CURRENT RATING AT 25°C = 3 AMPS

CURRENT RATING AT 85°C = 1 AMP

CONTACT RESISTANCE (INITIAL) = 15mΩ MAX

CONTACT RESISTANCE (AFTER CONDITIONING) = 23mΩ MAX

### ENVIRONMENTAL:

TEMPERATURE RANGE = -55°C TO +125°C

### MECHANICAL:

DURABILITY = 01 + 42 - 1000 OPERATIONS

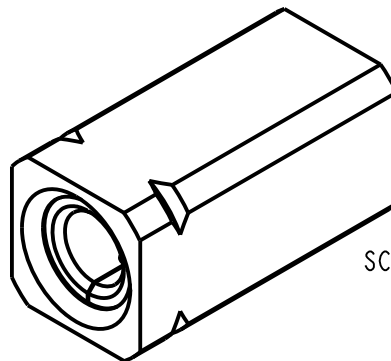
INSERTION FORCE (Ø0.46mm GAUGE) = 5.0N MAX

WITHDRAWAL FORCE (Ø0.46mm GAUGE) = 0.5N MIN

MATING PIN SIZE = Ø0.53-0.41mm

PIN LENGTH = 2.8mm

FOR COMPLETE MECHANICAL AND ELECTRICAL SPECIFICATION  
SEE COMPONENT SPECIFICATION C004XX (LATEST ISSUE).



SCALE 1:5

ORDER CODE:

**H3482-XX**

FINISH

01 - GOLD CLIP, TIN/LEAD SHELL

42 - GOLD CLIP, 100% TIN SHELL

|                 |      |          |        |
|-----------------|------|----------|--------|
| MGP             | 8    | 21.05.13 | 12096  |
| NAME            | ISS. | DATE     | C/NOTE |
| APPROVED: MGP   |      |          |        |
| CHECKED: SB     |      |          |        |
| DRAWN: I. SANDY |      |          |        |
| CUSTOMER REF.:  |      |          |        |
| ASSEMBLY DRG:   |      |          |        |

**HARWIN**

www.harwin.com  
technical@harwin.com

THIS DRAWING AND ANY  
INFORMATION OR DESCRIPTIVE  
MATTER SET OUT HEREON ARE  
CONFIDENTIAL AND COPYRIGHT  
PROPERTY OF THE HARWIN  
GROUP AND MUST NOT BE  
DISCLOSED, LOANED, COPIED  
OR USED FOR MANUFACTURING,  
TENDERING OR FOR ANY  
OTHER PURPOSE WITHOUT  
THEIR WRITTEN PERMISSION.

### TOLERANCES

X. = ±1mm

X.X = ±0.25mm

X.XX = ±0.10mm

X.XXX = ±0.01mm

ANGLES = ±5°

UNLESS STATED

### MATERIAL:

SEE ABOVE

FINISH: SEE ABOVE

S/AREA: mm²

TITLE: Ø0.5mm SURFACE MOUNT  
TEST SOCKET ASSEMBLY  
(TAPE AND REELED)

DRAWING NUMBER:

**H3482-XX**

SHT  
2  
OF  
2

# Mouser Electronics

Authorized Distributor

Click to View Pricing, Inventory, Delivery & Lifecycle Information:

[Harwin:](#)

[H3482-01](#)