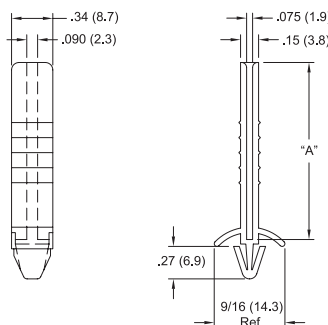
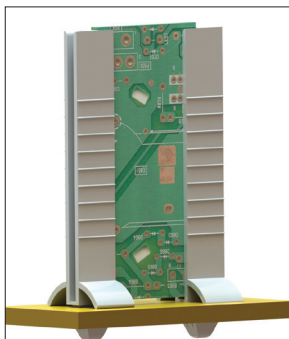


VERTICAL MOUNT CARD GUIDES

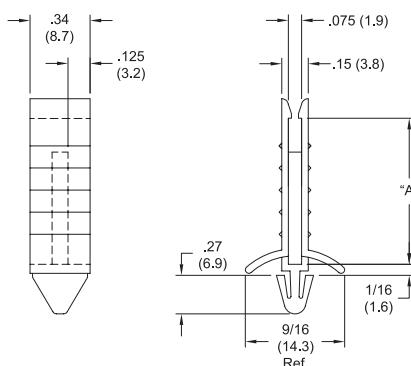
Buy One or
Buy Bulk & SAVECBG
Circuit Board Guide

- Vertical mount for boards of any width
- Double channel permits side-by-side mounting
- PC board easily slides in and out
- Material: UL94 V-2 Nylon 6/6
- Color: Natural

Mounting Hole: Snap-lock: .175 x .310 (4.45 x 7.87)
Rectangular Hole

Panel Thickness: .030 - .070 (0.76 - 1.78)

Item No.	"A"	Accepts PCB Thickness	Bulk Pack Qty.
CBG-1-01	1.0 (25.4)	.062 (1.6)	100
CBG-1.5-01	1.5 (38.1)	.062 (1.6)	100
CBG-2-01	2.0 (50.8)	.062 (1.6)	100
CBG-3-01	3.0 (76.2)	.062 (1.6)	100

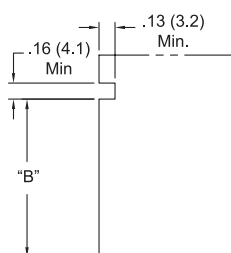
LCBG
Locking Circuit Board Guide

- Locking tabs hold board in place.
- Vertical mount for boards of any width
- Double channel permits side-by-side mounting
- Material: UL94 V-2 Nylon 6/6
- Color: Natural

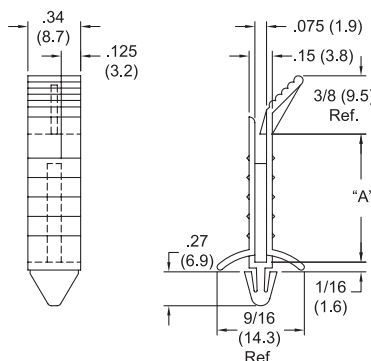
Mounting Hole: Snap-lock: .175 x .310 (4.45 x 7.87)
Rectangular Hole

Panel Thickness: .030 - .070 (0.76 - 1.78)

Item No.	"A"	Accepts PCB Thickness	Bulk Pack Qty.
LCBG-1-01	.880 (22.4)	.062 (1.6)	100
LCBG-1.5-01	1.375 (34.9)	.062 (1.6)	100
LCBG-2-01	1.870 (47.5)	.062 (1.6)	100
LCBG-3-01	2.875 (73)	.062 (1.6)	100

LCBG-T
Releasable Locking Circuit Board Guide

Typical Board Cutout



- Double channel permits side-by-side mounting
- Board is held in place by locking tab
- Board is easily released
- Material: UL94 V-2 Nylon 6/6
- Color: Natural

Mounting Hole: Snap-lock: .175 x .310 (4.45 x 7.87)
Rectangular Hole

Panel Thickness: .030 - .070 (0.76 - 1.78)

Item No.	"A"	"B"	Accepts PCB Thickness	Bulk Pack Qty.
LCBG-1T-01	.880 (22.4)	.865 (22)	.062 (1.6)	100
LCBG-1.5T-01	1.375 (34.9)	1.360 (34.5)	.062 (1.6)	100
LCBG-2T-01	1.870 (47.5)	1.855 (47.1)	.062 (1.6)	100
LCBG-3T-01	2.875 (73)	2.860 (72.6)	.062 (1.6)	100