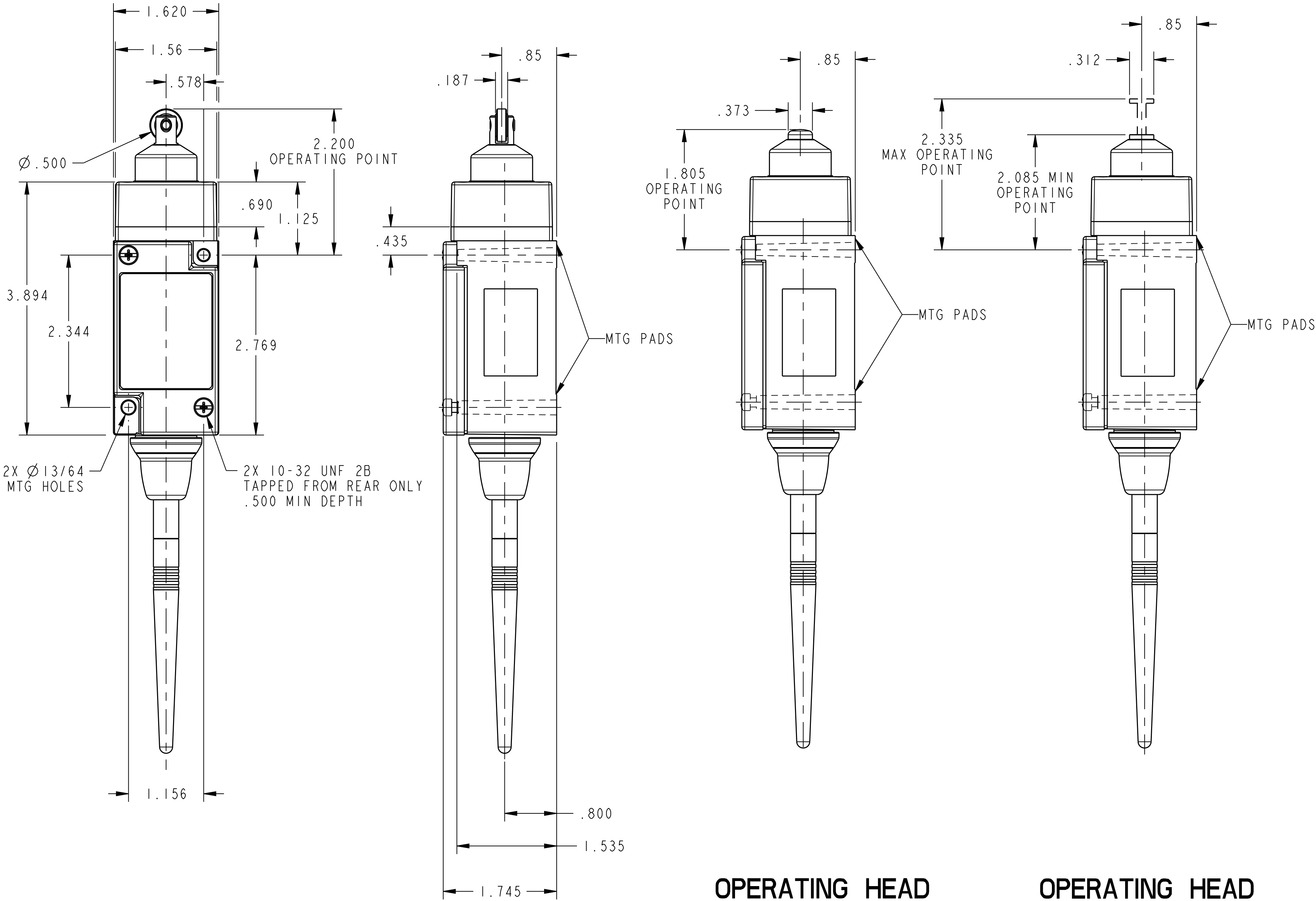


PLUNGER TYPE TOP

OPERATING POINT GIVEN IN RELATION TO TOP MOUNTING HOLE

CHARACTERISTICS	OPERATING HEAD CODE "C" TOP PLUNGER MOMENTARY	OPERATING HEAD CODE "D" TOP ROLLER PLUNGER MOMENTARY	OPERATING HEAD CODE "V" ADJUSTABLE TOP PLUNGER MOMENTARY
PRETRAVEL (MAX)	.070	.070	.070
DIFFERENTIAL TRAVEL (MAX)	.016	.016	.016
OVERTRAVEL (MIN)	.190	.190	.190
OPERATING FORCE (MAX)	4 LBS	4 LBS	4 LBS
OPERATING POINT	1.805±.030	2.200±.040	2.085 MIN 2.335 MAX
FULL OVERTRAVEL FORCE (MAX)	9 LBS	9 LBS	9 LBS



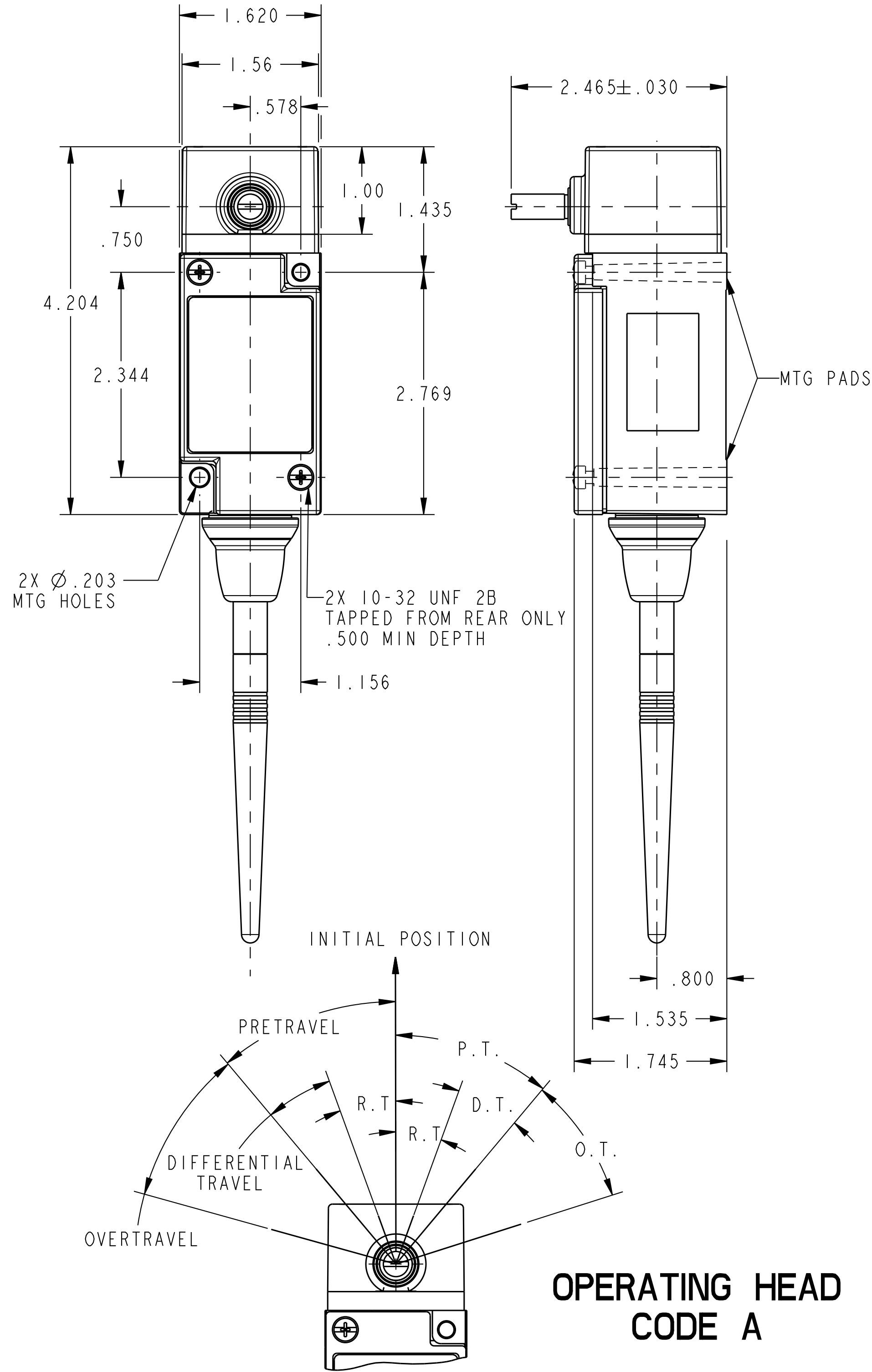
OPERATING HEAD
CODE D

OPERATING HEAD
CODE C

OPERATING HEAD
CODE V

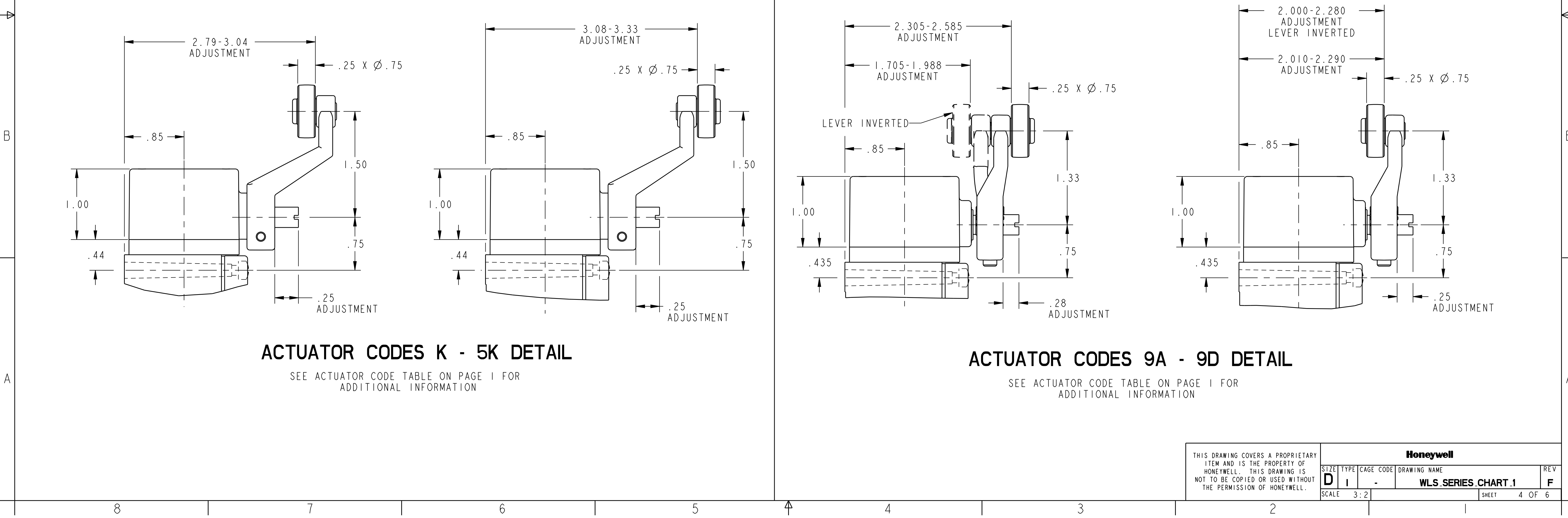
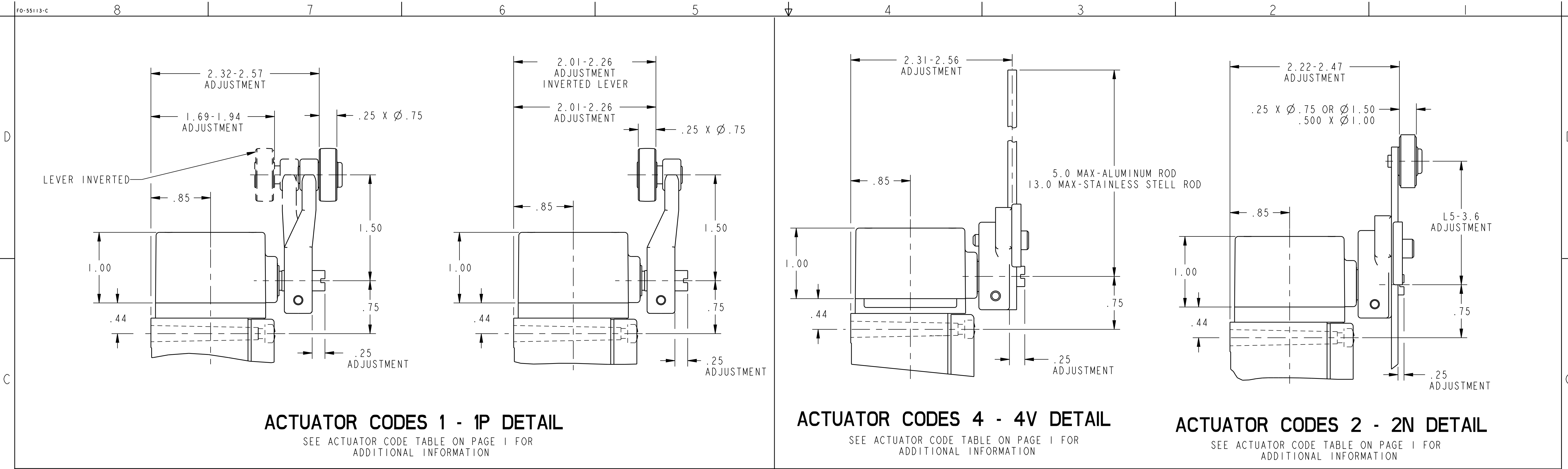
SIDE ROTARY

OPERATING CHARACTERISTICS	OPERATING HEAD CODE "A" MOMENTARY	OPERATING HEAD CODE "N" MAINTAINED
PRETRAVEL (MAX)	17.5°	65°
OVERTRAVEL (MIN)	60°	20°
DIFFERENTIAL TRAVEL (MAX)	7°	40°
TOTAL TRAVEL (REF)	77.5°	90°
OPERATING TORQUE (MAX)	4 IN. LBS	4 IN. LBS
FULL TRAVEL TORQUE (MAX)	4 IN. LBS	N/A



OPERATING HEAD
CODE A

OPERATING DATA-SIDE ROTARY

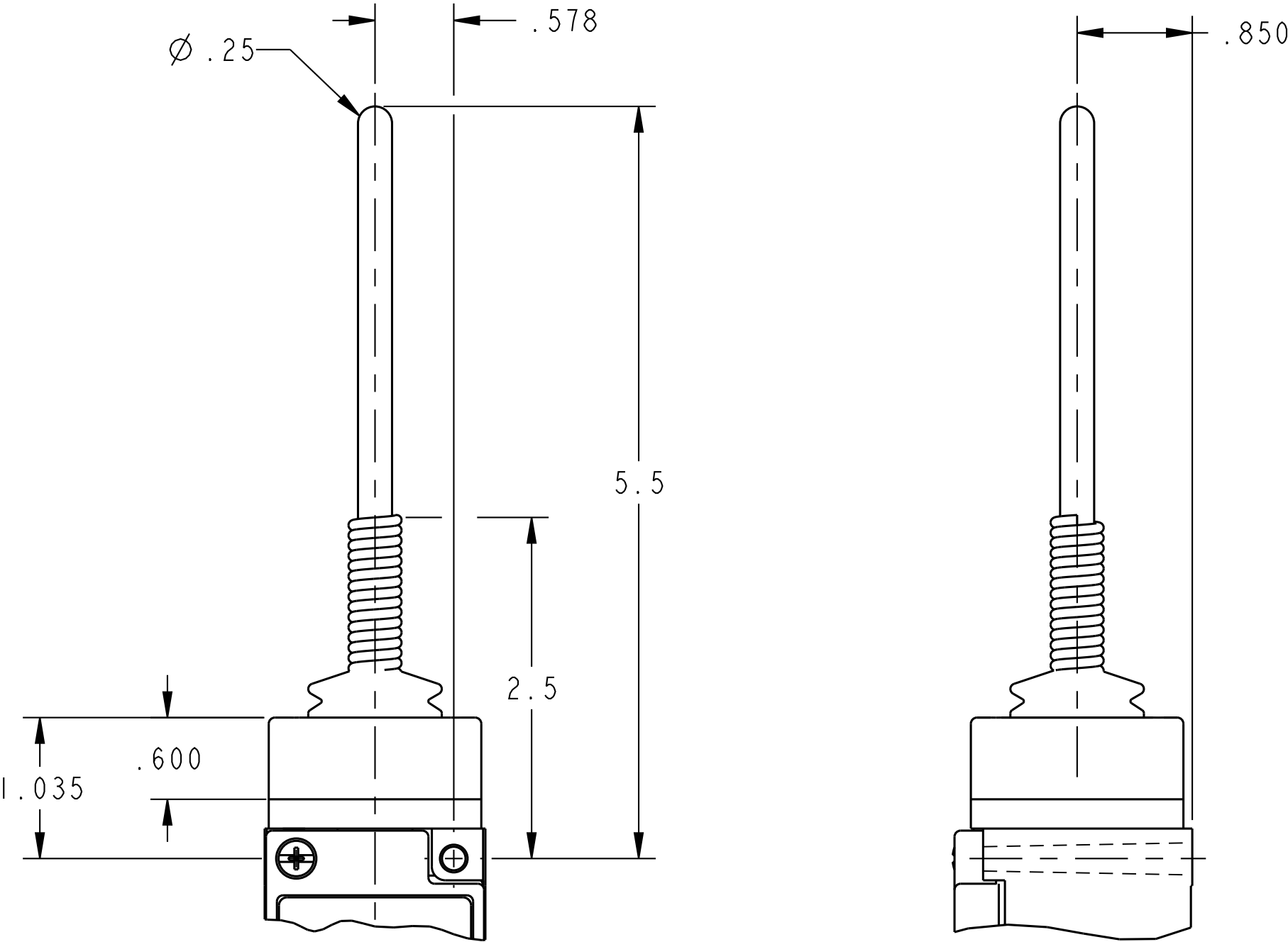


D

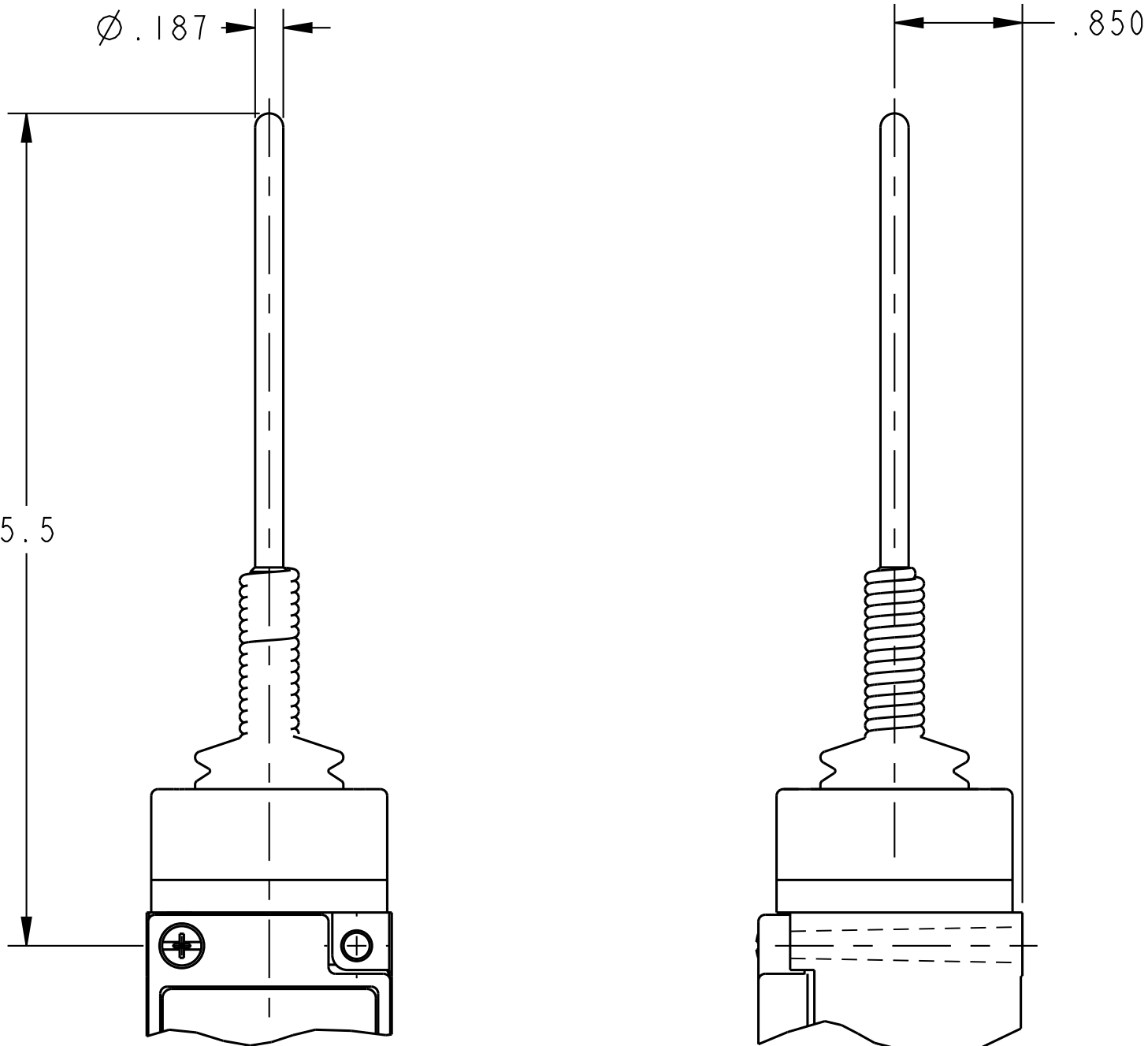
C

B

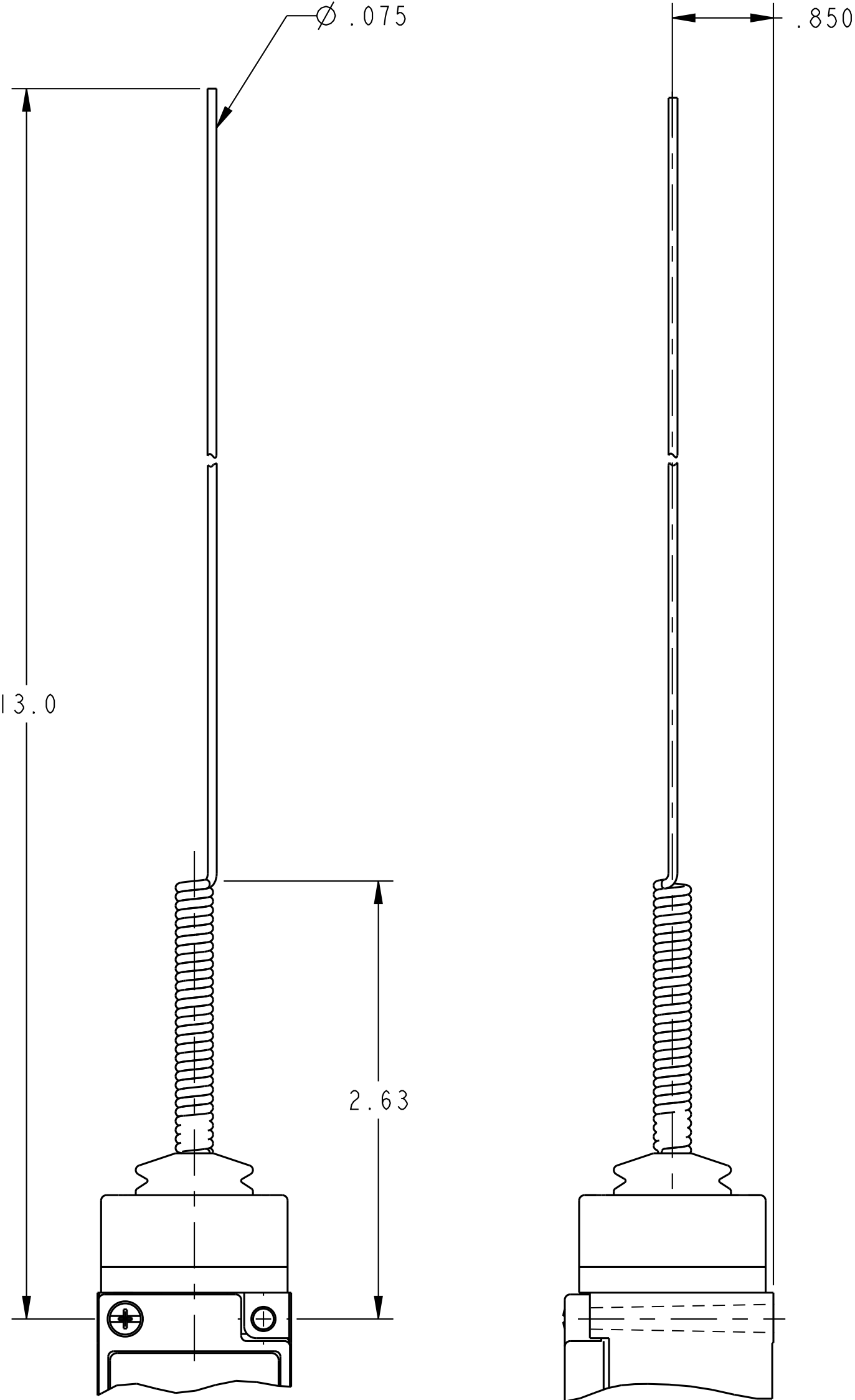
A



OPERATING HEAD CODE J
ACTUATOR CODE 7A



OPERATING HEAD CODE J
ACTUATOR CODE 7N



OPERATING HEAD CODE J
ACTUATOR CODE 7M

PRETRAVEL (APPROX) IN. RADIUS	WOBBLE STICK		
	ROD	CABLE	WIRE
	1.0	1.5	4.0
OPERATING FORCE - OZ (MAX)	10.0	7.0	5.0

D

C

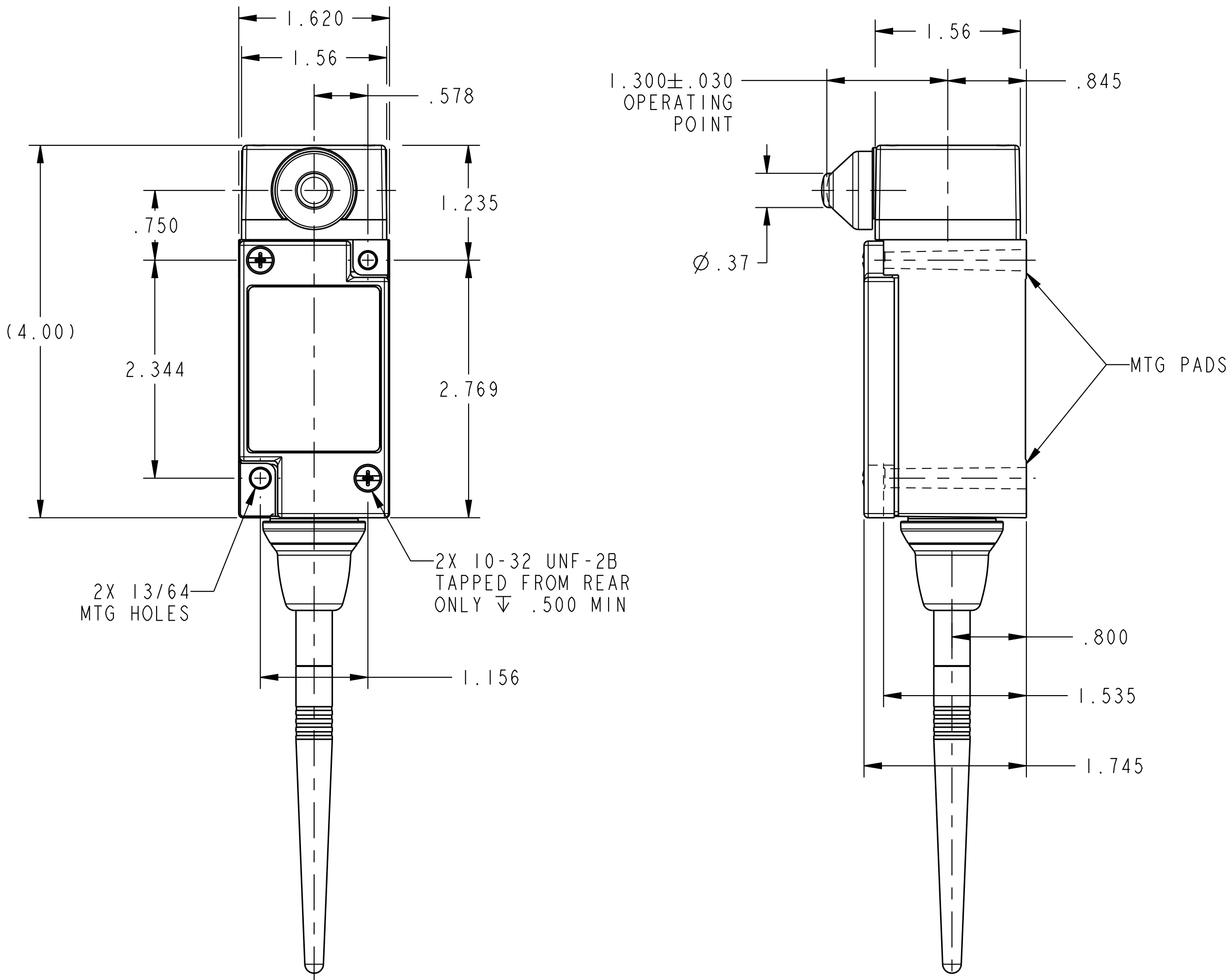
B

A



SIDE PLUNGER TYPE

OPERATING CHARACTERISTICS	
PRETRAVEL (MAX)	.100
DIFFERENTIAL TRAVEL (MAX)	.045
OVERTRAVEL (MIN)	.190
OPERATING FORCE (MAX)	6 LBS
OPERATING POINT	1.300±.030
FULL OVERTRAVEL FORCE (MAX)	6 LBS



OPERATING HEAD
CODE E