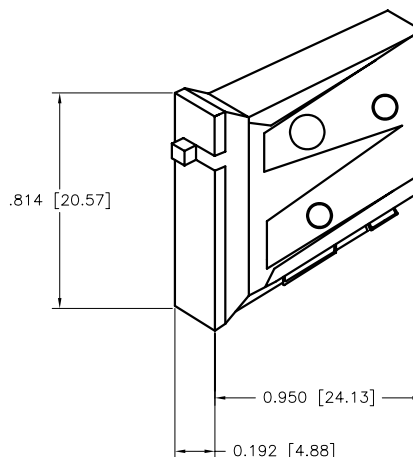


PRODUCT NUMBER

SEE TABLE



## FEATURES:

- \* RATED 1/4 TO 7 1/2 AMPS, 300VDC
- \* PROVIDES ELECTRICAL AND VISUAL ALARM NOTIFICATION
- \* COLOR CODES FOR DIFFERENT CURRENT RATINGS
- \* NO TOOL REQUIRED FOR INSERTION OR REMOVAL
- \* FULLY ENCLOSED FOR MAXIMUM SAFETY
- \* ALARM CIRCUIT TESTING WITHOUT POWER DISRUPTION BY PRESSING THE SLIDING COLOR INDICATOR
- \* SLIDING COLOR INDICATOR POPS OUT WHEN THE FUSE IS BLOWN
- \* CSA APPROVED
- \* FOR USE WITH QBK1, QBK2 AND QBK3 FUSE BLOCKS

## MECHANICAL:

- \* DURABILITY: 250 CYCLES
- \* OPERATING TEMPERATURE: -40°C TO +85°C

## ELECTRICAL:

- \* INSULATION RESISTANCE: 0.5 MEGOHMS MIN.
- \* RATED VOLTAGE: 300VDC

## ASSOCIATED COMPONENTS:

- \* QBK1 FUSE BLOCKS: SEE DRAWING 54376
- \* QBK2 FUSE BLOCKS: SEE DRAWING 54377
- \* QBK3 FUSE BLOCKS: SEE DRAWING 54378
- \* QFF3A DUMMY FUSE (PLASTIC): A0205210

mat'l. code				surface		tolerance	projection	product family	
—				ASME Y14.5		ASME Y14.5		NORCON	
						tolerances unless otherwise specified		title	
ltr	ecdn no	dr	date	angles		XXX ±.005/XX±.13	INCH/MM	FUSE BLOCKS QFF1 ALARM FUSES	
C	V06-0729	HTB	2006-07-31						
D	V07-0477	HTB	2007-07-17					scale N.T.S.	
				dr	T. BREWBAKER	2006-07-31		dwg no	
				engr	T. BREWBAKER	2006-07-31		sheet 1 of 2	
				chr	T. BREWBAKER	2006-07-31		54395	
				appd	T. BREWBAKER	2006-07-31		type	
sheet	revision	D	D					CUSTOMER Drawing	
index	sheet	1	2						



PRODUCT NO.	ENG. CODE	RATED CAPACITY (AMPS)	WILL CARRY FOR 30 MINS. (AMPS)	WILL OPERATE WITHIN 90 SEC. (AMPS)	RESISTANCE OF FUSE (OHMS)	FUSE BODY COLOR	COLOR OF INDICATOR	
A0205202	QFF1A	1-1/3	1.46	2	.26	BROWN	BROWN	
A0205203	QFF1B			DISCONTINUED				DISCONTINUED
A0205204	QFF1C			DISCONTINUED				DISCONTINUED
A0205205	QFF1D			DISCONTINUED				DISCONTINUED
A0205206	QFF1E			DISCONTINUED				DISCONTINUED
A0205207	QFF1F			DISCONTINUED				DISCONTINUED
A0205208	QFF1G			DISCONTINUED				DISCONTINUED
A0205209	QFF1H			DISCONTINUED				DISCONTINUED
A0345823	QFF1J			DISCONTINUED				DISCONTINUED
A0614339	QFF1AB			DISCONTINUED				DISCONTINUED
A0614340	QFF1BB			DISCONTINUED				DISCONTINUED
A0614341	QFF1CB			DISCONTINUED				DISCONTINUED
A0614342	QFF1DB			DISCONTINUED				DISCONTINUED
A0614343	QFF1EB			DISCONTINUED				DISCONTINUED
A0614344	QFF1FB			DISCONTINUED				DISCONTINUED
A0614345	QFF1GB			DISCONTINUED				DISCONTINUED
A0614346	QFF1HB			DISCONTINUED				DISCONTINUED

mat'l. code				surface ASME Y14.5		tolerance ASME Y14.5		projection 		product family NORCON	
ltr	ecr no	dr	date	tolerances unless otherwise specified							
d				angles	xxx +.005/xx+.13		INCH/MM		title FUSE BLOCKS QFF1 ALARM FUSES		
							scale N.T.S.		dwg no		
				dr	T. BREWBAKER	2006-07-31			sheet 2 of 2		size
				enr	T. BREWBAKER	2006-07-31			54395		A4
				chr	T. BREWBAKER	2006-07-31			type		CUSTOMER Drawing
				appd	T. BREWBAKER	2006-07-31					
sheet index	revision sheet										