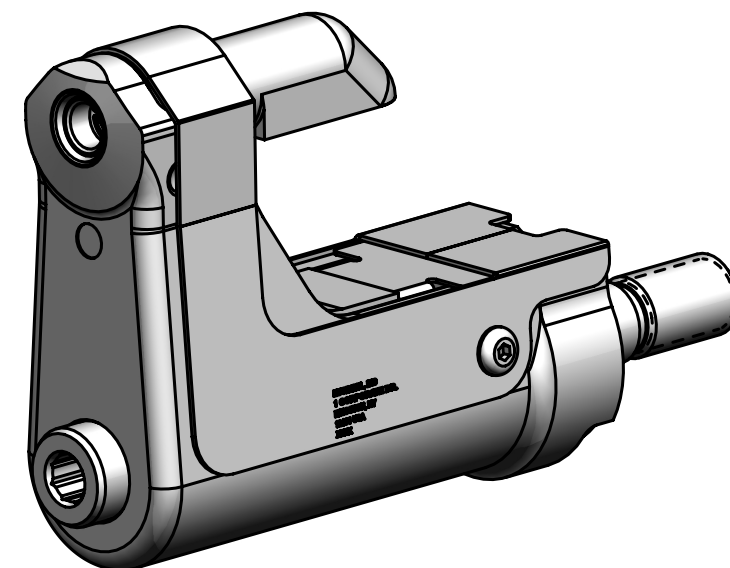


- NOTES:
- 1 MAXIMUM RECOMMENDED STROKE: .500
 - 2 FOR USE WITH THE 225/245 TOOL, USE ATTACHMENT P/N 119400-1 AND STROKE LIMITER 118362
 - 3 FOR USE WITH 2500 TOOL, USE ATTACHMENT P/N 119400-1 AND STROKE LIMITER KIT 119888
 - 4 FOR OTHER TOOLS AND/OR OTHER TOOL AND STROKE COMBINATIONS, CONSILT ENGINEERING DEPARTMENT
 - 5 SHIP WITH STOP 126747
 - 6 SHIP WITH DEFLECTOR 126748-1
 - 7 SHIP WITH (2) .030 SHIMS 128290 REFERENCE PB563 FOR PROPER USE
 - 8 FOR USE WITH 206-375 TOOL PRIMARILY

REV	DESCRIPTION	DET	DATE
E	128072 WAS 120377, 128603 WAS 126755 & 126751, ADDED NOTE 7	MK	12/20/07
F	130056 WAS 128072	EL	11/15/11
G	128493 WAS 128603. ADDED 128488.	JJC	07/18/12
H	ADDED 508511, 130322-1 WAS 126746, 130326-1 WAS 126745; ADDED VIEW	NDG	06/03/13



(H)	508511	2	#6-32 B.H.C.S.	10
	128488	1	DRAWBAR	9
	126748-1	1	UNITIZED DEFLECTOR	8
	128493	1	COLLET	7
(H)	130326-1	1	GUARD	6
	120095	1	DEFLECTOR	5
	122912	1	BARBED RETAINER	4
	130056	1	UNITIZED CHUCK JAWS	3
(H)	130322-1	1	TOP GUARD	2
	126754	1	ANVIL	1
	PART NO.	QTY	DESCRIPTION	ITEM

IDENTIFICATION PER SPEC 42-311: ★ ETCH			
ITAR:	HUCK INTERNATIONAL, INC., I.S.D. 1 CORPORATE DR, P.O. BOX 2270 KINGSTON, NEW YORK 12401		
ECCN:EAR99	NOSE ASSEMBLY -08 LGP LONG		
SCH B#:8467.99.0190	DET: MVM	CK:	DATE: 2/21/02 SCALE: 2:1
HTS:8467.99.0190	B	99-3702-1	