

908-21102

REVISIONS

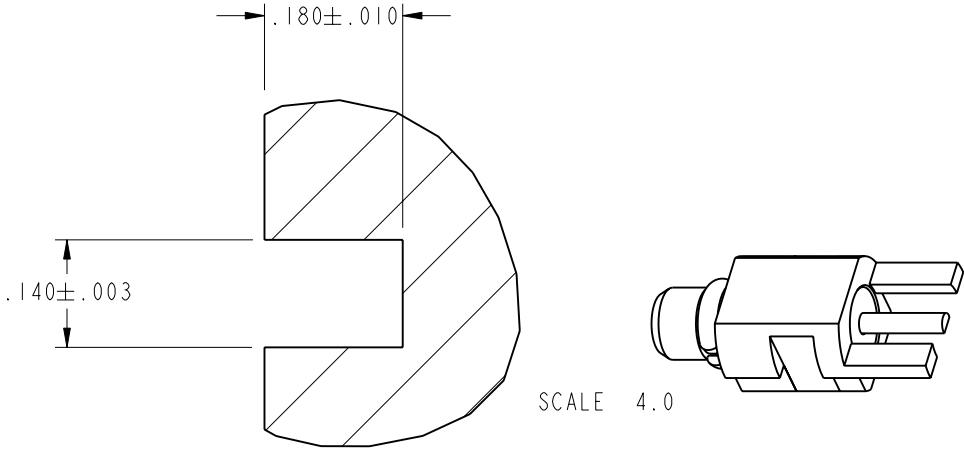
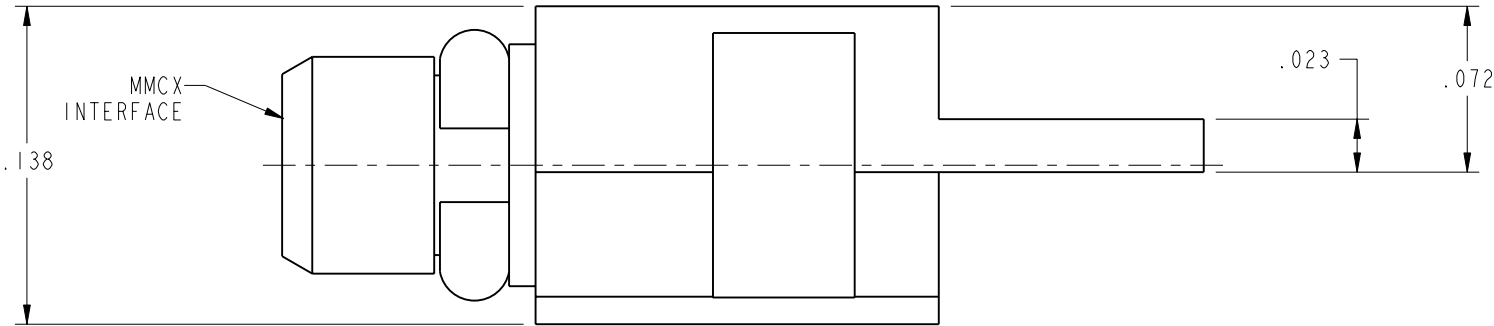
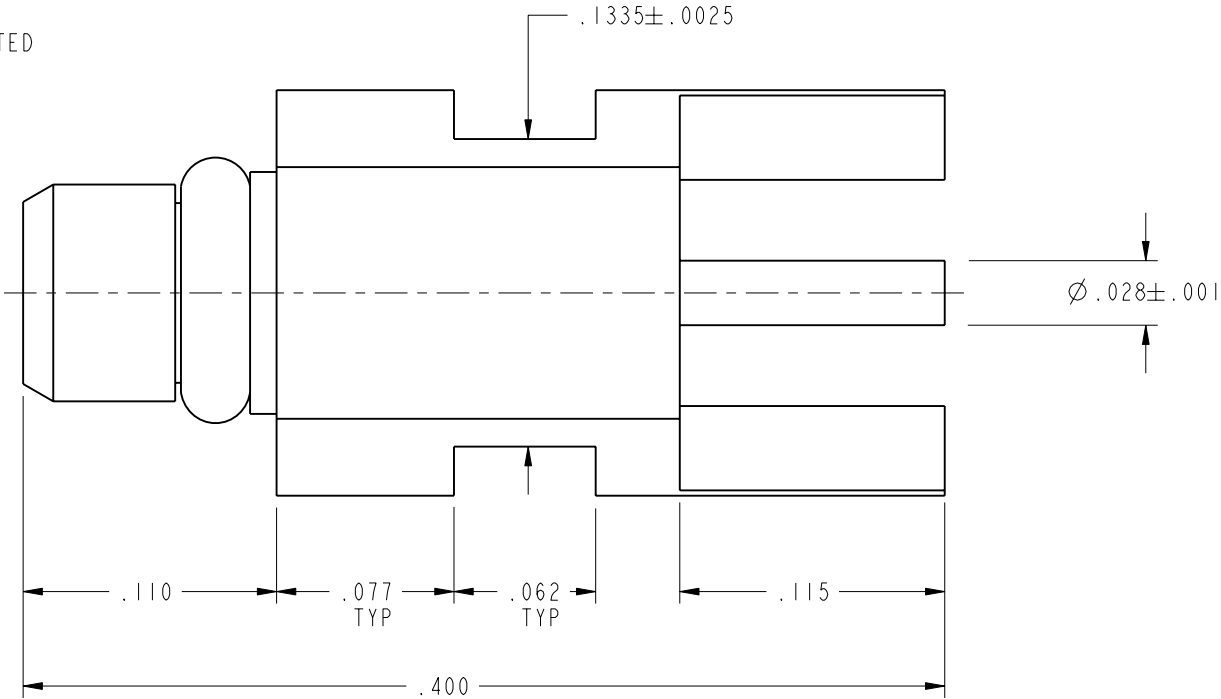
DRAWING NO.	REV	DESCRIPTION	DATE	ECO	APPR
THIRD ANGLE PROJ. 	A	OFFICIAL RELEASE TO MFG	09-12-96	41536	DL/BCG
	B	REVISED, SEE ECO FOR DETAILS	10/10/96	41570	DL/
	C	ADD COPLANAR REF NOTE	2/21/01	43687	CPM

NOTES:

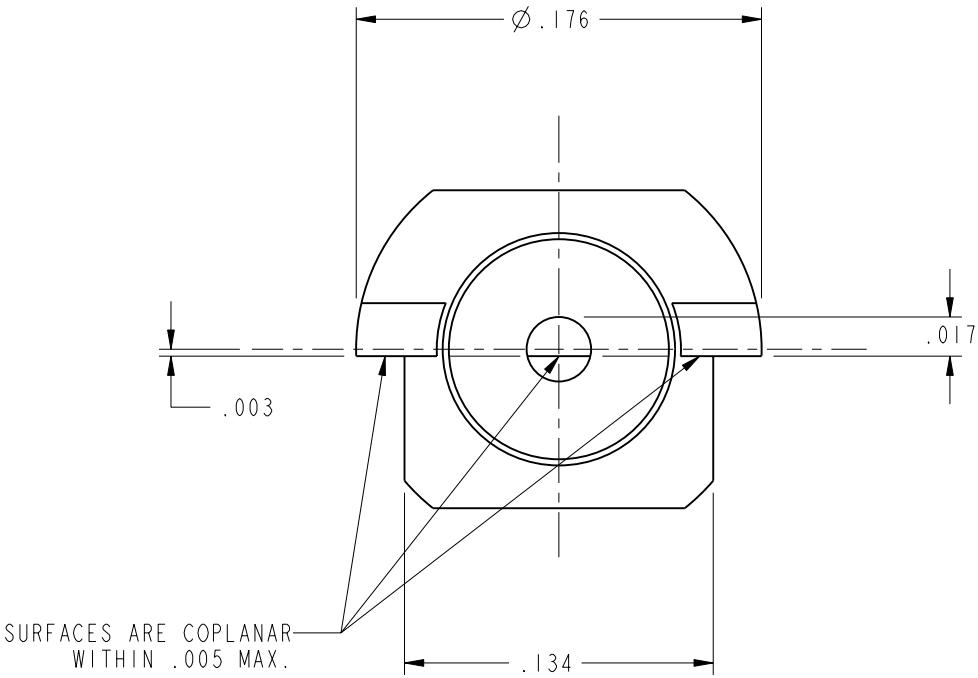
1. DO NOT SCALE THIS DRAWING.
2. MATERIALS OF CONSTRUCTION:

BODY - BRASS, GOLD PLATED
CONTACT - BRASS, GOLD PLATED
INSULATOR - PTFE
RING - BeCu, GOLD PLATED

CUSTOMER OUTLINE DRAWING
ALL OTHER SHEETS ARE FOR INTERNAL USE ONLY



RECOMMENDED PCB CUTOUT



UNLESS OTHERWISE SPECIFIED, DIMENSIONS ARE IN INCHES AND TOLERANCES ARE:
2 PLACE DECIMAL 3 PLACE DECIMAL ANGLES
±.015 (0,381 mm) ±.005 (0,127 mm) ± 1°

NOTICE - These drawings, specifications, or other data (1) are, and remain the property of Amphenol Corp. (2) must be returned upon request; and (3) are confidential and not to be disclosed to any person other than those to whom they are given by Amphenol Corp. The furnishing of these drawings, specifications, or other data by Amphenol Corp., or to any other person to anyone for any purpose is not to be regarded by implication or otherwise in any manner licensing, granting rights or permitting such holder or any other person to manufacture, use or sell any product, process or design, patented or otherwise, that may in any way be related to or disclosed by said drawings, specifications, or other data.

MATERIAL

REFERENCE

EAR 966172-1
615X-1431-200
GEN# ASSYMI-MMCX

DRAWN

D. LUI

ENGINEER

B. GLEISSNER

APPROVED

B. GLEISSNER

CAD FILE

I:\MMCX\908-21102

DATE

29-Aug-96

DATE

29-Aug-96

DATE

03-Sep-96

TITLE

MICRO MATE PLUG
PCB EDGE MOUNT

CODE ID

74868

DWG SIZE

B

DRAWING NO.

908-21102

REV

C

Amphenol

Amphenol Corporation
Communication and Network
Products Division
Danbury, CT U.S.A. 06810

SCALE: 12.0:1

SHEET 2 OF 2