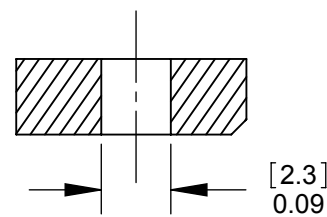
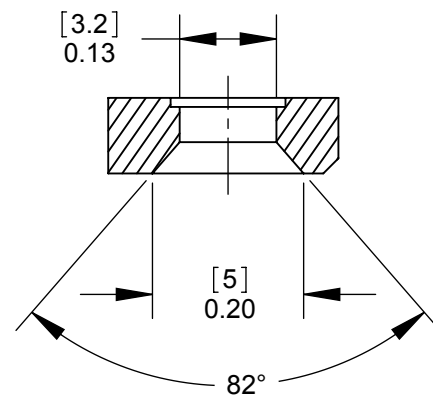


**PD3FSC1
FRONT MOUNT**
SECTION A-A
SCALE 4 : 1



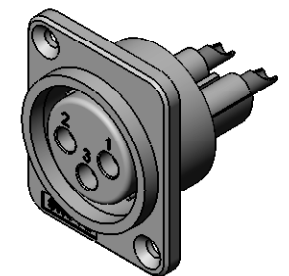
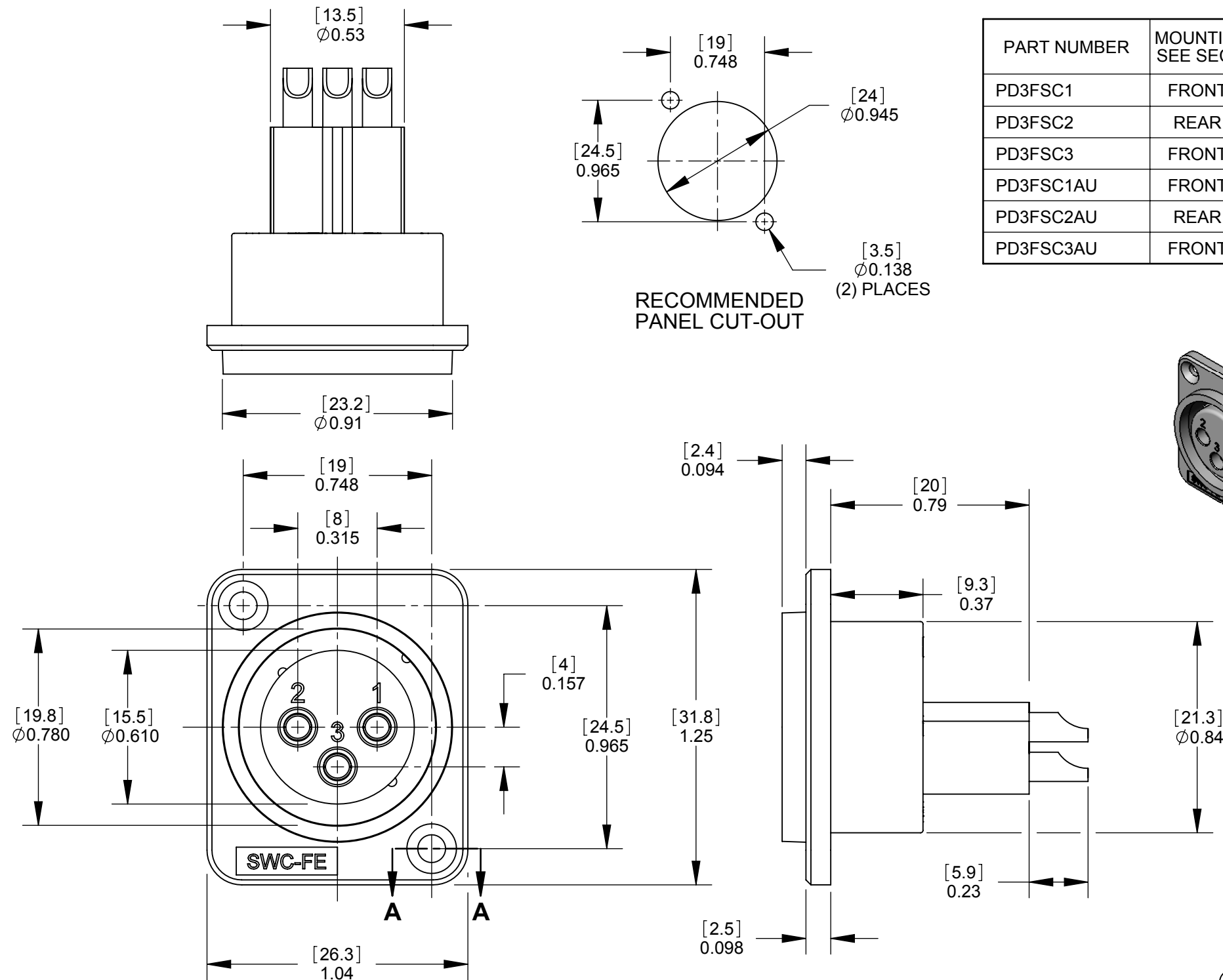
**PD3FSC2
REAR MOUNT**
SECTION A-A
SCALE 4 : 1



**PD3FSC3
FRONT MOUNT**
SECTION A-A
SCALE 4 : 1

NOTES:

1. MATERIALS:
HOUSING - THERMOPLASTIC, BLACK
PINS - COPPER ALLOY (SEE TABLE FOR FINISH)
2. THESE PRODUCTS ARE RoHS COMPLIANT.



PART NUMBER	MOUNTING STYLE SEE SECTION A-A	TERMINAL PLATING
PD3FSC1	FRONT MOUNT	SILVER
PD3FSC2	REAR MOUNT	SILVER
PD3FSC3	FRONT MOUNT	SILVER
PD3FSC1AU	FRONT MOUNT	GOLD
PD3FSC2AU	REAR MOUNT	GOLD
PD3FSC3AU	FRONT MOUNT	GOLD

CUSTOMER DRAWING

					<div>UNLESS OTHERWISE SPECIFIED</div> <div>1. ALL DIMENSIONS IN INCHES</div> <div>- TWO PLACE DECIMALS ±0.02</div> <div>- THREE PLACE DECIMALS ±0.005</div>	THIS DRAWING DESCRIBES A DESIGN CONSIDERED PROPRIETARY IN NATURE, DEVELOPED AND MANUFACTURED BY SWITCHCRAFT INC. AND IS RELEASED ON A CONFIDENTIAL BASIS FOR IDENTIFICATION PURPOSES ONLY.											
						SIZE	WIDTH		MULT		LBS/M		TEMPER				
						FINISH SPEC No.						MATERIAL SPEC No.					
						FIRST USED ON				SCALE 2:1		<div>Switchcraft®</div> <div>SHEET 1 OF 1</div>					
						DATE DRAWN 4/27/10	BY RS	CHKD RS 4/27/10		APVD TJK 4/28/10							
A	22118	1/14/98	RS	TJK		NAME PLASTIC PANEL MOUNT QG CONNECTORS, SOLDERCUP, RoHS							PART No. PD3FSC SERIES				REV A
REV	ECO NUMBER	DATE	BY	APVD													
REVISIONS						DO NOT SCALE DRAWING											