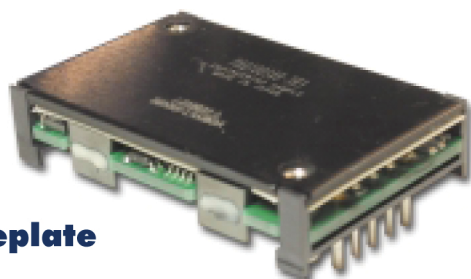

Open Frame

Baseplate

Quarter Brick Power Supply Specifications

- ◆ Low Voltage Outputs (1.2-5.0V)
- ◆ High Power Density up to 90.4W/in³
- ◆ Industry Standard Footprint & Pinouts
- ◆ Safety Agency Approvals (UL1950, CSA22.2, CE, TUV)
- ◆ Constant Current Limit (Auto Restarting)
- ◆ Remote On / Off (Positive/Negative Logic Available)
- ◆ ASIC Design to Reduce Component Count

Key Market Segments & Applications

| | |
|---------------------|-----------------------------------------------------------------------------------------------|
| Central Office: | ATM, Sonet, DSL, ISDN, Frame Relay, WDM |
| Broadband: | Switching Equipment, Routers |
| Wireless/Cellular: | Micro Cells (larger in size/10 sq. mi.) Pico Cells (smaller in size/1 to 2 sq. mi.) |
| Remote Electronics: | Fixed Local Loop, Fiber Optic Transmission, Microwave Transmission, Wireless Local Loop |
| Customer Premise: | PBX, PABX, Datacomm, Voice Systems, Video Conferencing |
| Industrial | ATE Test Equipment & Semi-Fab |

PAQ Features and Benefits

| Feature | Benefit |
|---------------------------------------------------|----------------------------------------------------|
| ◆ Industry Standard footprint/pinout | ◆ Allows for multi-sourcing |
| ◆ ASIC Design | ◆ Reduces number of components |
| ◆ Wide Range Operating Temperature (-40 to 100°C) | ◆ Supports Harsh Wireless Operating Environment |
| ◆ High Efficiency 89% at 3.3V (PAQ100) | ◆ Reduce footprint area/Operation without heatsink |

Specifications

| MODEL | | PAQ100S48-1R2 | PAQ100S48-1R8 | PAQ100S48-2R5 | PAQ100S48-3R3 | PAQ100S48-5 |
|-------------------------|---------|--------------------------------------------------------------------------------|---------------|---------------|---------------|-------------|
| ITEMS | | | | | | |
| Nominal Output Voltage | V | 1.2 | 1.8 | 2.5 | 3.3 | 5 |
| Max Output Current | A | 25 | 25 | 25 | 25 | 20 |
| Max Output Power | W | 30 | 45 | 62.5 | 82.5 | 100 |
| Efficiency (Typ.) | (*1) % | 80 | 84 | 86 | 89 | 90 |
| Input Voltage Range | - | 36 - 76VDC | | | | |
| Input Current (Typ.) | (*1) A | 0.8 | 1.14 | 1.55 | 1.98 | 2.37 |
| Output Voltage Accuracy | (*1) % | ±1 | | | | |
| Output Voltage Range | (*4) - | -20%, +10% | | | ±15% | |
| Max Ripple & Noise | (*4) mV | 100 | 100 | 100 | 100 | 100 |
| Max Line Regulation | (*2) mV | 10 | 10 | 10 | 10 | 10 |
| Max Load Regulation | (*3) mV | 10 | 10 | 10 | 10 | 10 |
| Over Current Protection | - | 105% - 140% (Self-Recovering /V option) | | | | |
| Over Voltage Protection | - | 120% - 140% (Self-Recovering /V option) | | | | |
| Remote ON/OFF Control | - | Low=On, Open=Off (/P option: Low=Off, Open=On) | | | | |
| Operating Temperature | (*5) C | Ta= -40° - +85° (100°C /B Option) | | | | |
| Cooling | (*5) - | Convection Cooled / Forced Air Cooled | | | | |
| Isolation Voltage | - | Input-Output : 1.5kVDC for 1min | | | | |
| Shock | - | 196.1m/s ² | | | | |
| Weight (Typ.) | g | 50 | | | | |
| Vibration | - | Non Operating, 10-55Hz (Sweep for 1min.) | | | | |
| | - | Amplitude 0.825mm Constant (Maximum 49.0m/s ²) X, Y, Z 1 hour each | | | | |
| Size (W×H×D) | in | 1.45" x .33" x 2.3"; .5" height (/B Option) | | | | |
| Warranty | - | 2 years | | | | |

Notes:

*1. At 48VDC, maximum output current, Air Velocity = 2m/s and Ta = +25°C.

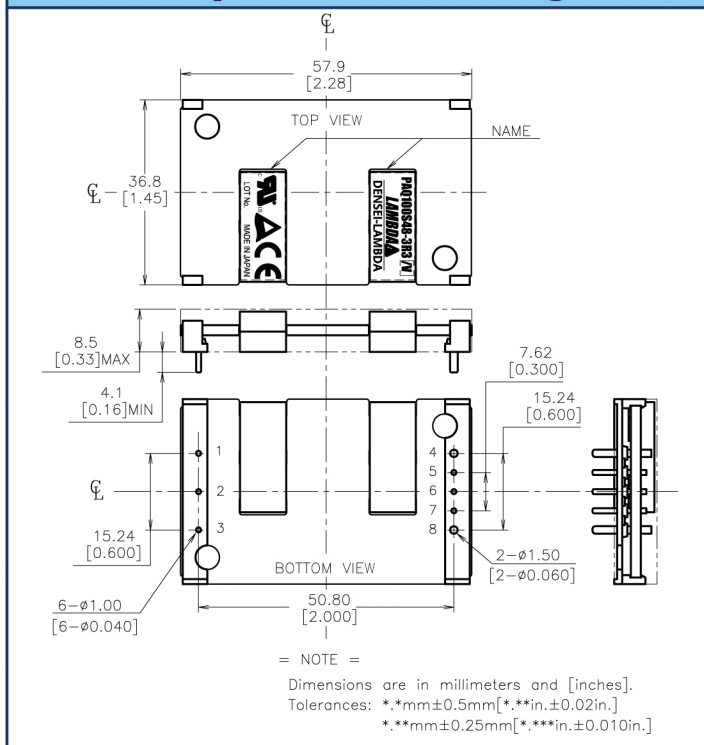
*2. 36 - 76VDC, constant load.

*3. No load - Full load, constant input voltage.

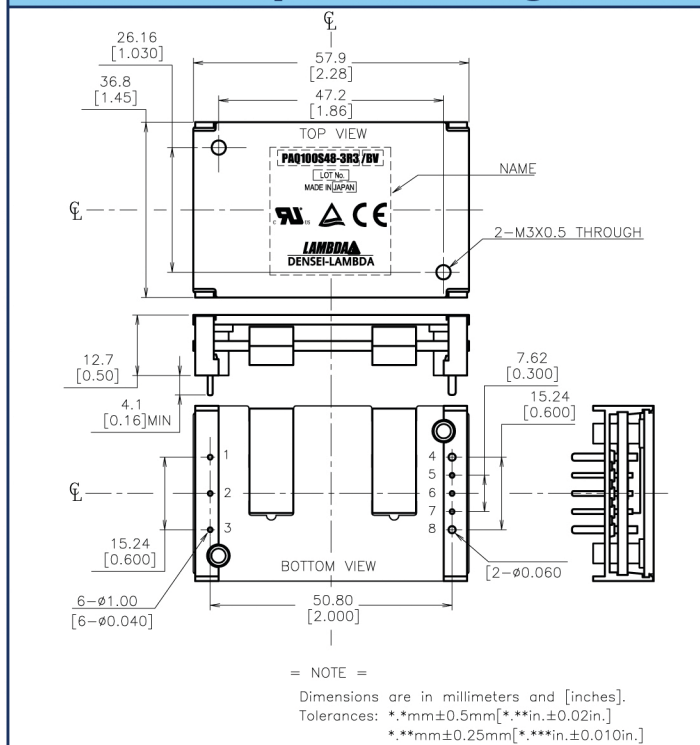
*4. External components are needed for operation.

*5. Refer to installation manual (website).

PAQ100 Openframe Drawing



PAQ100 Baseplate Drawing



PAQ Series Outputs

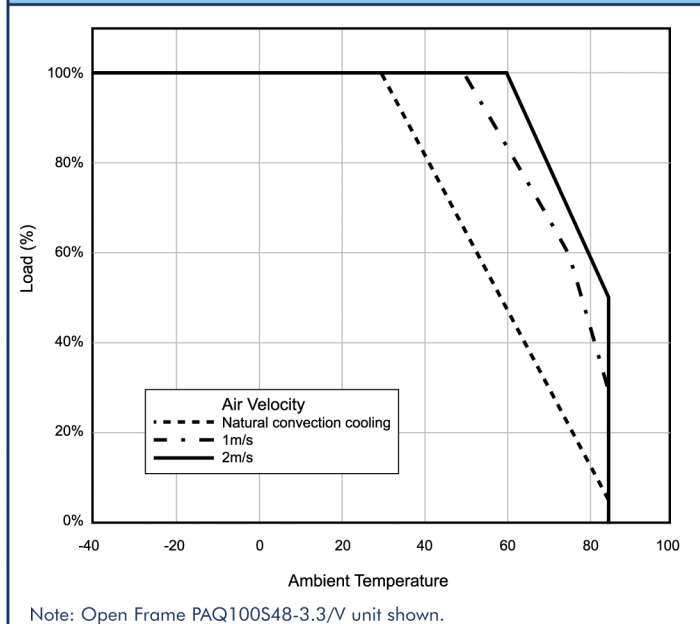
| PIN# | Label | Function |
|------|-------|------------------------------------|
| 1 | -Vin | Negative Input Terminal |
| 2 | CNT | ON/OFF Control Terminal |
| 3 | +Vin | Positive Input Terminal |
| 4 | -V | Negative Output Terminal |
| 5 | -S | Negative Remote Sensing |
| 6 | TRM | Output Voltage Adjustment Terminal |
| 7 | +S | Positive Remote Sensing |
| 8 | +V | Positive Output Terminal |

PAQ Series Options

| Suffix | Description |
|--------|-----------------------------------------|
| Blank | Manual Reset after OVP or OCP condition |
| /V | Auto Reset after OVP or OCP condition |
| /P | Positive Logic Remote On/Off |
| /B | Baseplate version |

/V, /PV, /BV, /BPV are Standard US stock items.

PAQ100 Derating Curve



For Additional Information, please visit www.lambdapower.com/products/paq-series.htm

Last Time Buy November 2019

Mouser Electronics

Authorized Distributor

Click to View Pricing, Inventory, Delivery & Lifecycle Information:

[TDK-Lambda:](#)

[PAQ100S48-1R8/V](#) [PAQ100S481R8/V](#)