

Type: CRR32

◆ Product Description

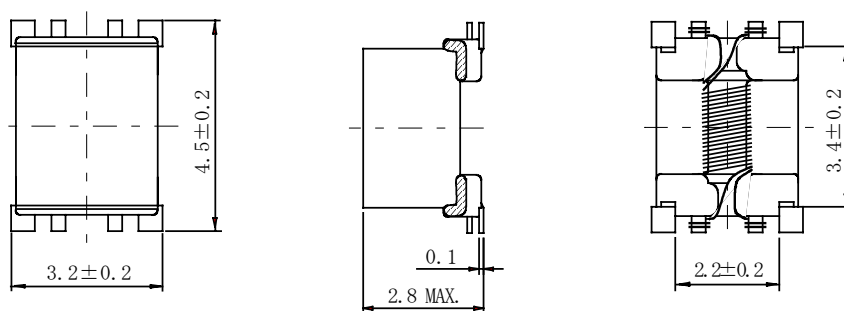
- $4.7 \times 3.4\text{mm}$ Max.(L×W), 2.8mm Max. Height .
- Impedance range: $350\ \Omega \sim 800\ \Omega$.
- Rated current range: 400mA~800mA.



◆ Feature

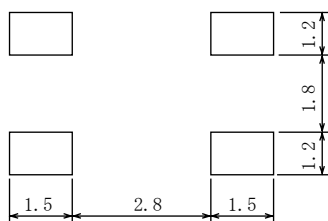
- Correspondence to the large current due to low D.C.R.
- High impedance in wide frequency band.
- Ideally used in D.C common modem line filter(Digital AV equipment ,Digital still camera, Digital video camera).
- RoHS Compliance.

◆ Dimensions (mm)

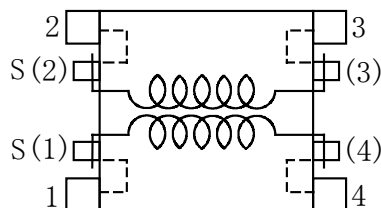


* Dimension does include solder used on coil.

◆ Land Pattern (mm)



◆ Schematics (Bottom)



◆ Specification

Part Name	Stamp	Impedance(Ω) <Min.> 100 MHz (1-4) and (2-3)	D.C.R.(Ω) [Max.](at 20°C) (1-4) and (2-3)	Rated current (mA)[Max.] ※1
CRR32NP-Ø2A	1	800	0.5	400
CRR32NP-Ø5A	2	650	0.3	460
CRR32NP-Ø7A	3	500	0.2	580
CRR32NP-1ØA	4	350	0.2	800

※1. Rated current: The DC current at which the temperature rise is $\Delta t = 40^\circ\text{C}$. ($T_a = 20^\circ\text{C}$).