

13

12

11

10

9

8

7

6

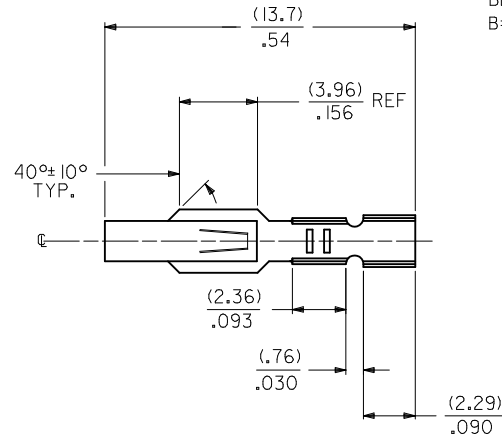
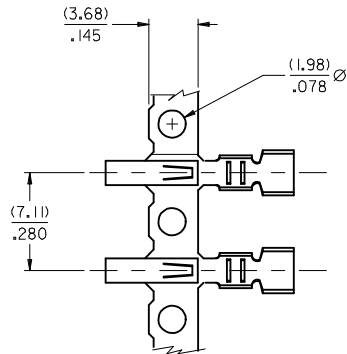
5

4

3

2

1



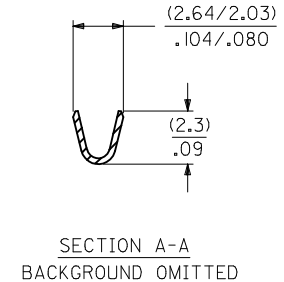
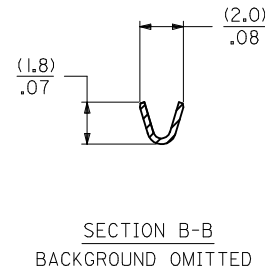
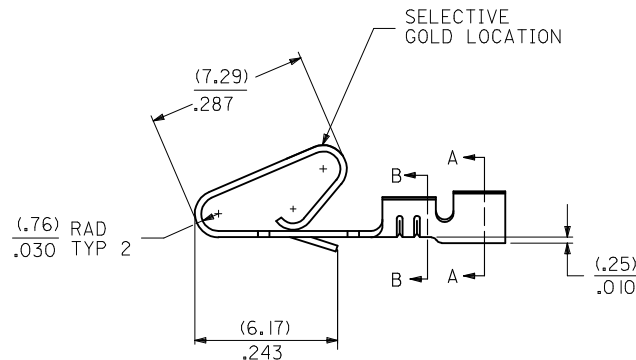
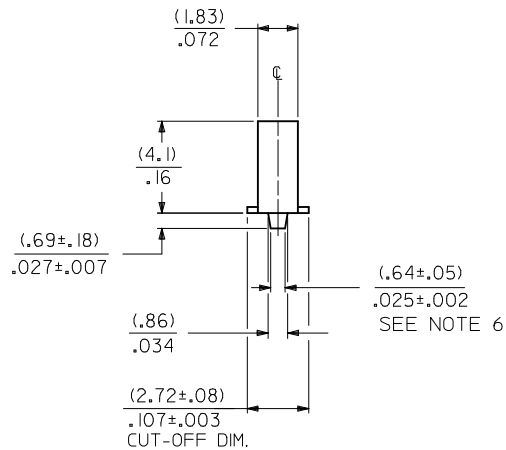
MATERIAL CODE
(.28)/.0106 THK
BLANK=BRASS
B=PHOS BRONZE

OPTIONS
BLANK=AS SHOWN
1 = WITH CAT EARS


WINDING SPEC.
A=CHAIN, PER WINDING DETAIL "A"
BLANK=CHAIN, PER WINDING DETAIL "B"
L=LOOSE

PLATING CODE
(PER SDES-88)

(122) - OVERALL TIN: (0.00381)/.000150 MIN.
OVER (0.00076)/.000030 MIN. NICKEL
(154) - OVERALL TIN (0.00254)/.000100 MIN.
OVER (0.00127)/.000050 MIN. NICKEL
(224) - OVERALL MATTE TIN: (0.00508)/.000200 MIN.
OVER (0.00127)/.000050 MIN. NICKEL
(550) - SELECT GOLD: (0.00038)/.000015 MIN.
OVERALL GOLD FLASH: (0.00005)/.000002 MIN.
OVERALL NICKEL UNDERPLATE: (0.00076)/.000030 MIN.
(555) - SELECT GOLD: (0.00038)/.000015 MIN.
OVERALL NICKEL UNDERPLATE: (0.00076)/.000030 MIN.
(558) - SELECT GOLD: (0.00076)/.000030 MIN.
OVERALL GOLD FLASH: (0.00005)/.000002 MIN.
OVERALL NICKEL UNDERPLATE: (0.00127)/.000050 MIN.
(P909) - OVERALL HOT TIN DIP: (0.00254)/.000100 MIN



1. MATERIAL: SEE LEGEND
2. FINISH: SEE LEGEND
3. PRODUCT SPECIFICATION: PS-08-50
4. CRIMP ACCEPTS 22 TO 26 GA. WIRE WITH (1.65)/0.65 MAX INSULATION DIA.
5. DIMENSIONS GIVEN ACROSS CENTERLINES ARE SYMMETRICAL ABOUT THOSE CENTERLINES WITHIN HALF THE TOTAL TOLERANCE.
6. OPTIONAL DESIGN (.86±.05)/.034±.002
7. THIS PART CONFORMS TO CLASS B REQUIREMENTS OF COSMETIC SPECIFICATION PS-45499-002

ADD WINDING VIEW EC NO: UCP2014-4131 DRWN:MKIPPER 2014/04/07 CHKD:NGUYEN 2014/04/07 APPR:FSMITH 2014/04/21	DESCRIPTION	QUALITY SYMBOLS	GENERAL TOLERANCES (UNLESS SPECIFIED)			DIMENSION STYLE MM/IN		SCALE ---	DESIGN UNITS INCH	 THIRD ANGLE PROJECTION	
				mm	INCH	DRAWN BY	DATE	TITLE			
			4 PLACES	± ---	± ---	PEREZ/AR	01/29/87				
			3 PLACES	± ---	±.010	CHECKED BY	DATE	CRIMP TERMINAL (3.96)/.156 CENTERS 22 TO 26 GA WIRE			
			2 PLACES	± 0.25	±.014	PATEL	01/29/87				
			1 PLACE	± 0.36	± ---	APPROVED BY	DATE	molex			
			0 PLACE	± ---	± ---	FSMITH	2014/04/21				
			ANGULAR ±1/2°			MATERIAL NO.		DOCUMENT NO.			SHEET NO. 1 OF 2
			DRAFT WHERE APPLICABLE MUST REMAIN WITHIN DIMENSIONS			SEE CHART		SD-2578			
			X1	REV		SIZE THIS DRAWING CONTAINS INFORMATION THAT IS PROPRIETARY TO MOLEX INCORPORATED AND SHOULD NOT BE USED WITHOUT WRITTEN PERMISSION					

12

11

10

9

8

7

6

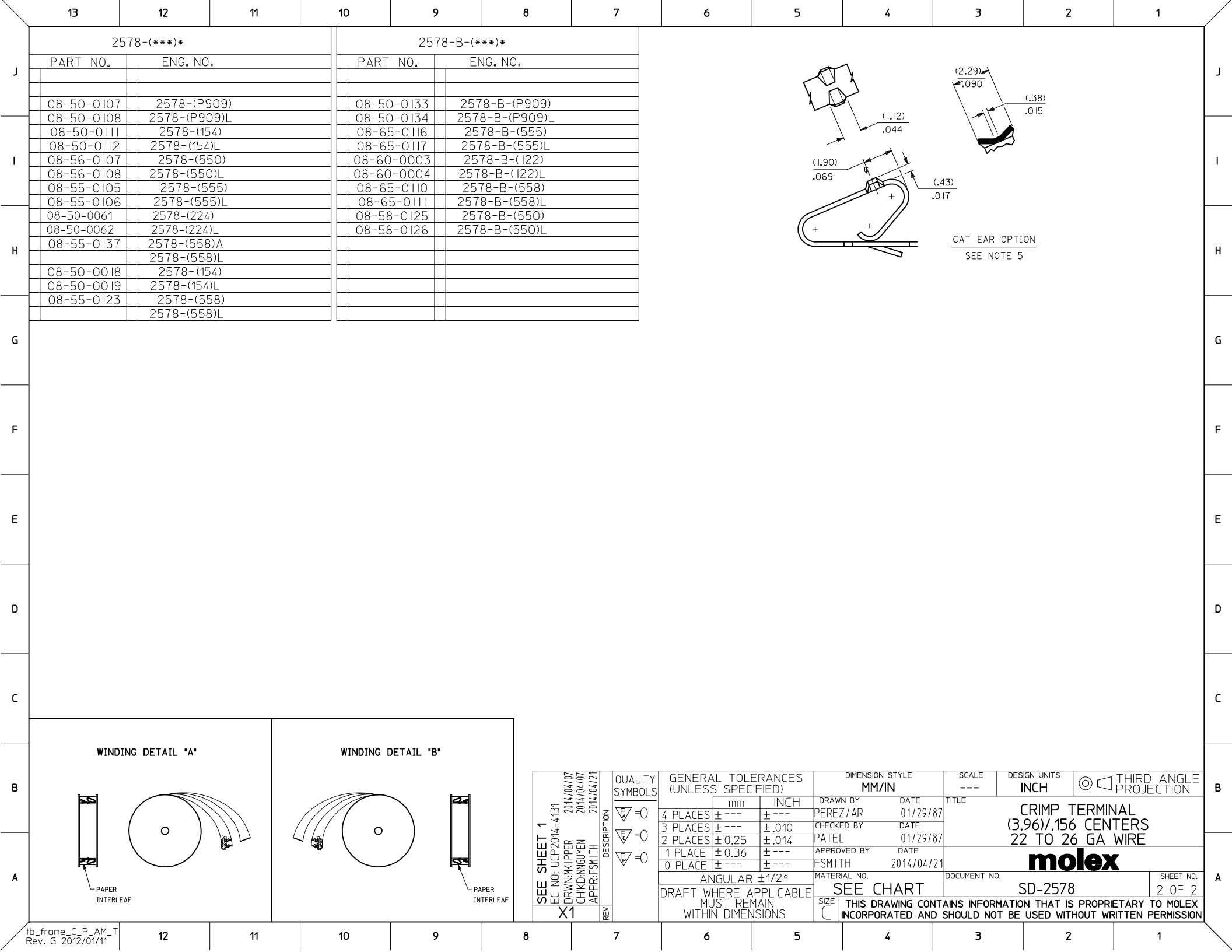
5

4

3

2

1



Mouser Electronics

Authorized Distributor

Click to View Pricing, Inventory, Delivery & Lifecycle Information:

Molex:

08-50-0019