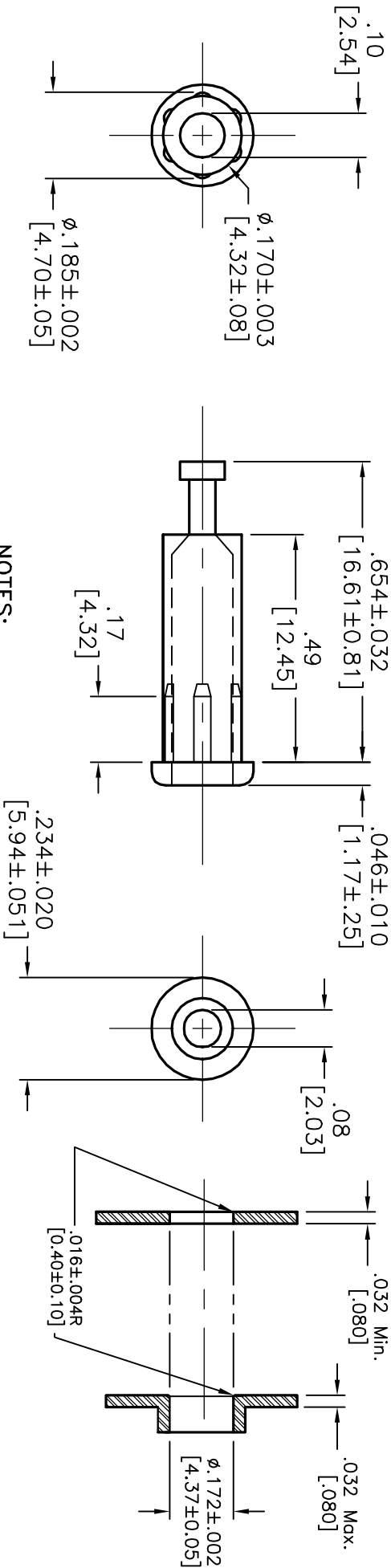


ALL RIGHTS RESERVED. NO PORTION OF THIS PUBLICATION, WHETHER IN WHOLE OR IN PART CAN BE REPRODUCED WITHOUT THE EXPRESS WRITTEN CONSENT OF SPC TECHNOLOGY.

REVISIONS			DOC. NO. SPC-F005 * Effective: 12/21/98 * DCP No: 680					
DCP #	REV	DESCRIPTION	DRAWN	DATE	CHECKD	DATE	APPRVD	DATE
	C	Revised					JL	
1210	D	Renamed and Updated	JWM	12/18/01	DJC	12/28/01	DJC	12/28/01



NOTES:

1. MATERIAL:

CONTACT: BRASS BODY PER QQ-B-626D
WITH WRAP AROUND BERYLLIUM COPPER
SPRING PER QQ-C-533

BODY: NYLON 66 PER ASTM D4066

2. FINISH: SILVER

3. PANEL THICKNESS: UP TO .375" [9.5 MM].

4. FLAMMABILITY: UL94V-2
SELF-EXTINGUISHING

5. CONTINUOUS USE TEMPERATURE:
-40°F (-40°C) TO 185°F (85°C)

6. CURRENT RATING: 5 AMPS

PANEL AND MOUNTING

HOLE LAYOUT

- BREAKDOWN VOLTAGE: 3500 VRMS MINIMUM
- CONTACT RESISTANCE: .005 OHMS MAX.
- CONTACT-TO-PANEL CAP.: 1 pF NOMINAL
- FOR STANDARD TIP PLUG .080" [2 MM].
- MACHINED CONTACT WITH TURRET TERMINAL.
- INSTALLS BY PRESSING INTO MOUNTING HOLE, NO MOUNTING HARDWARE REQUIRED.
- CLOSED ENTRY BLOCKS ACCES OF PROBES GREATER THAN .085" [2.16 MM].

PART NUMBER	COLOR
868-BK	BLACK
868-GR	GREEN
868-R	RED
868-Y	YELLOW

DISCLAIMER
ALL STATEMENTS AND TECHNICAL INFORMATION CONTAINED HEREIN ARE BASED UPON INFORMATION AND/OR TESTS WE BELIEVE TO BE ACCURATE AND RELIABLE SINCE CONDITIONS OF USE ARE BEYOND OUR CONTROL. THE USER SHALL DETERMINE THE SUITABILITY OF THE PRODUCT FOR THE INTENDED USE AND ASSUME ALL RISK AND LIABILITY WHATSOEVER IN CONNECTION THEREWITH.

Tolerances: Unless
Otherwise Specified:

.X = ±.015
.XX = ±.010
.XXX = ±.005

DRAWN BY:	DATE:
JP	2/16/93
CHECKED BY:	DATE:
JC	2/18/93
APPROVED BY:	DATE:
JL	2/22/93

DRAWING TITLE:

Tip Jack, Press-Fit, Rib-Lock

SIZE DWG. NO.

A TA-465

ELECTRONIC FILE

TA-465.dwg

REV

D