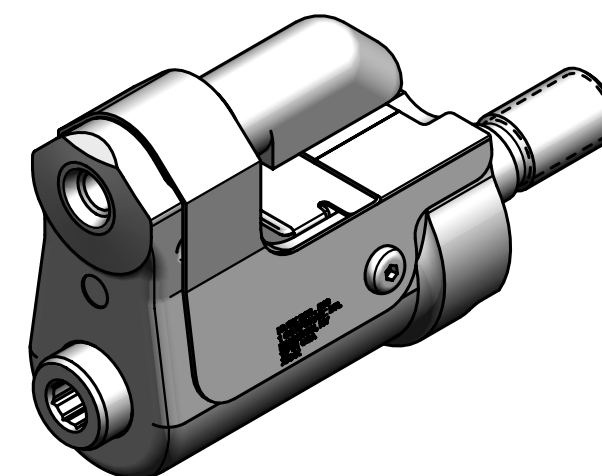


REV	DESCRIPTION	DET	DATE
E	UPDATED PICTORIALY	MJK	1/03/11
F	ITEM 3, 130054 WAS 128070	EL	11/14/11
G	128502 WAS 128612. ADDED 128487	JJC	08/03/12
H	130322 WAS 126746; 130326 WAS 126745; ADDED 508511	HKS	6/13/13

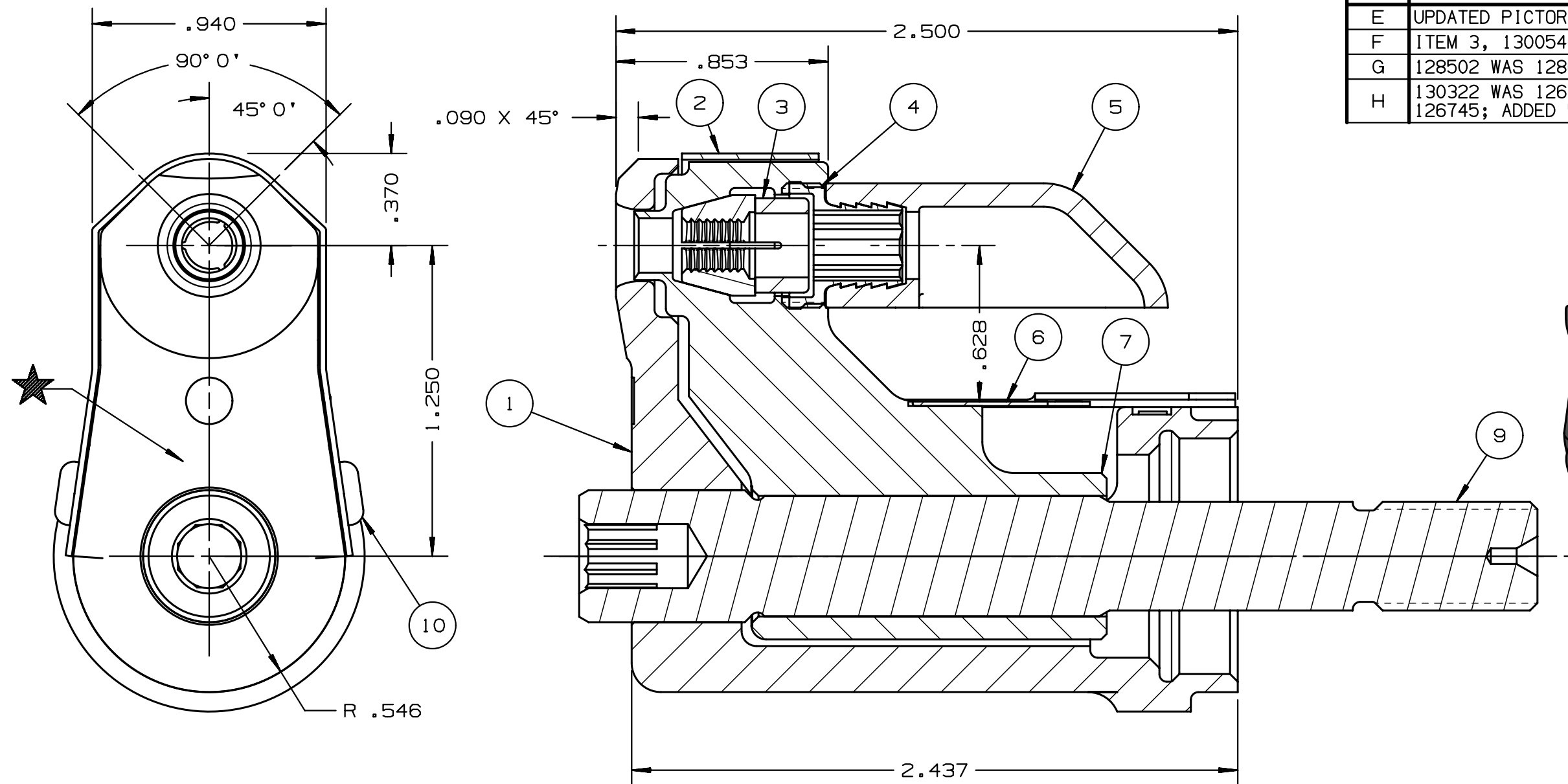


# NOTES:

- 1 MAXIMUM RECOMMENDED STROKE .500
- 2 FOR USE WITH THE 225/245 TOOL, USE ATTACHMENT P/N 119400-1 AND STROKE LIMITER 118362
- 3 FOR USE WITH 2500 TOOL, USE ATTACHMENT P/N 119400-1 AND STROKE LIMITER KIT 119888
- 4 FOR OTHER TOOLS AND/OR OTHER TOOL AND STROKE COMBINATIONS, CONSULT ENGINEERING DEPARTMENT
- 5 SHIP WITH STOP 126747
- 6 SHIP WITH DEFLECTOR 126748-1
- 7 SHIP WITH (2) .030 SHIMS 128290 REFERENCE PB563 FOR PROPER USE

(H)	508511	2	B.H.C.S.	10
	128487	1	DRAWBAR	9
	126748-1	1	UNITIZED DEFLECTOR	8
	128502	1	COLLET	7
(H)	130326	1	GUARD	6
	120095	1	DEFLECTOR	5
	122912	1	BARBED RETAINER	4
	130054	1	UNITIZED CHUCK JAW	3
(H)	130322	1	TOP GUARD	2
	127049	1	ANVIL	1
	PART NO.	QTY	DESCRIPTION	ITEM

IDENTIFICATION PER SPEC 42-311: ★ ETCH	HUCK INTERNATIONAL, INC., I.S.D 1 CORPORATE DR KINGSTON, NEW YORK 12401		
ITAR/ECCN: EAR99	NOSE ASSEMBLY -07 LGP		
SCH B#: 8467.99.0190	FINAL ASSY: FOR USE WITH 206-375		
HTS: 8467.99.0190	ENG: MVM	CK:	DATE: 9/05/02 SCALE: 2:1
	B	99-3762	



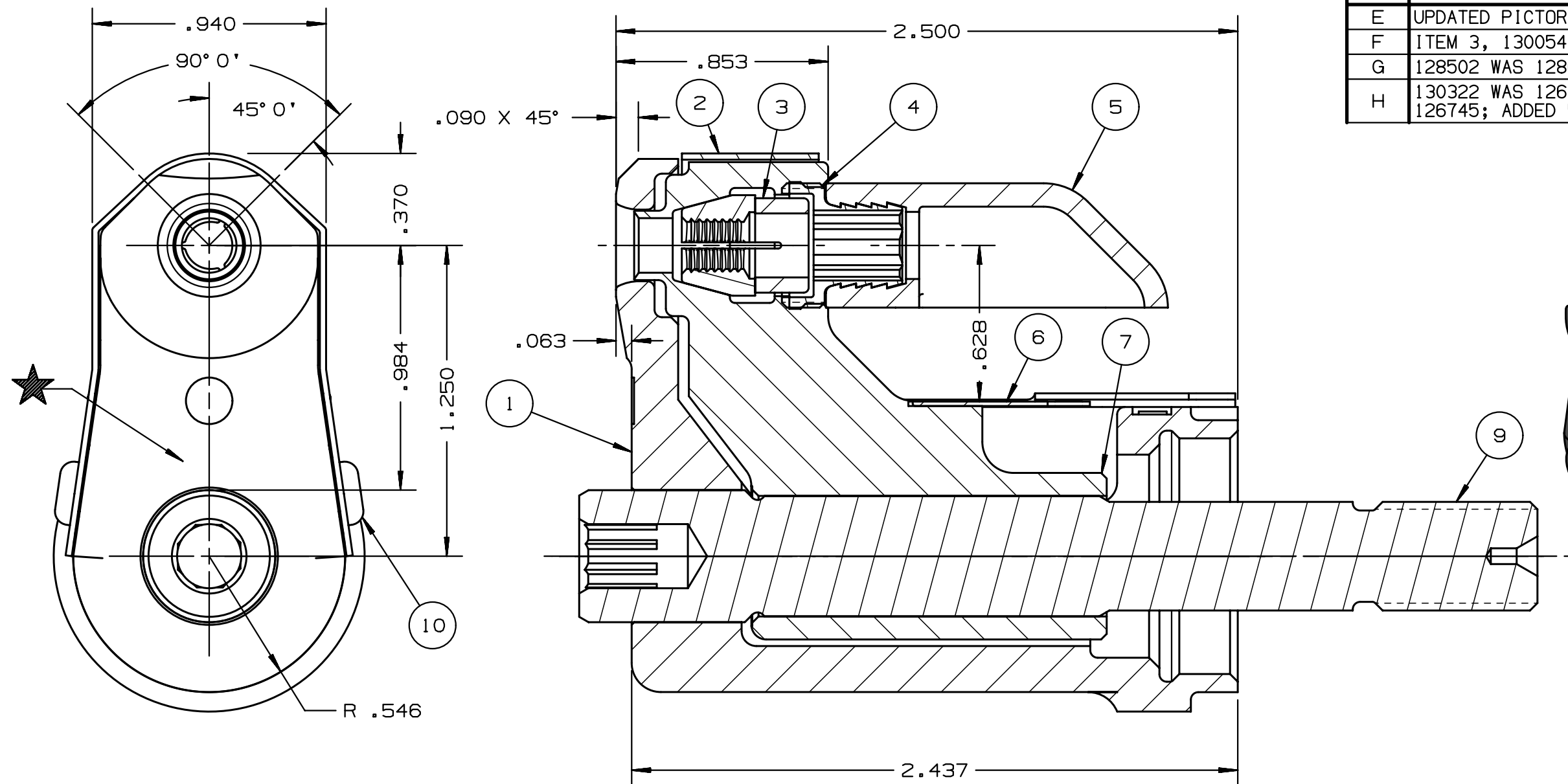
REV	DESCRIPTION	DET	DATE
E	UPDATED PICTORIALY	MJK	1/03/11
F	ITEM 3, 130054 WAS 128070	EL	11/14/11
G	128502 WAS 128612. ADDED 128487	JJC	08/03/12
H	130322 WAS 126746; 130326 WAS 126745; ADDED 508511	HKS	6/13/13

NOTES:

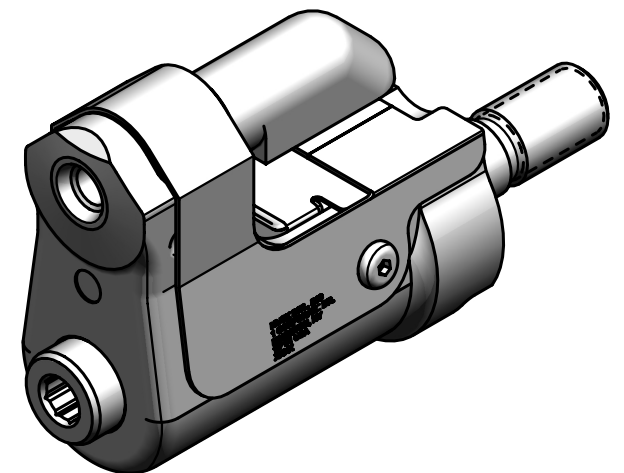
- 1 MAXIMUM RECOMMENDED STROKE .500
- 2 FOR USE WITH THE 225/245 TOOL, USE ATTACHMENT P/N 119400-1 AND STROKE LIMITER 118362
- 3 FOR USE WITH 2500 TOOL, USE ATTACHMENT P/N 119400-1 AND STROKE LIMITER KIT 119888
- 4 FOR OTHER TOOLS AND/OR OTHER TOOL AND STROKE COMBINATIONS, CONSULT ENGINEERING DEPARTMENT
- 5 SHIP WITH STOP 126747
- 6 SHIP WITH DEFLECTOR 126748-1
- 7 SHIP WITH (2) .030 SHIMS 128290 REFERENCE PB563 FOR PROPER USE

(H)	508511	2	B.H.C.S.	10
	128487	1	DRAWBAR	9
	126748-1	1	UNITIZED DEFLECTOR	8
	128502	1	COLLET	7
(H)	130326	1	GUARD	6
	120095	1	DEFLECTOR	5
	122912	1	BARBED RETAINER	4
	130054	1	UNITIZED CHUCK JAW	3
(H)	130322	1	TOP GUARD	2
	127049	1	ANVIL	1
	PART NO.	QTY	DESCRIPTION	ITEM

IDENTIFICATION PER SPEC 42-311: ★ ETCH		HUCK INTERNATIONAL, INC., I.S.D 1 CORPORATE DR KINGSTON, NEW YORK 12401	
ITAR/ECCN: EAR99		NOSE ASSEMBLY -07 LGP	
SCH B#: 8467.99.0190		FINAL ASSY: FOR USE WITH 206-375	
HTS: 8467.99.0190		ENG: MVM CK: DATE: 9/05/02 SCALE: 2:1	
		B	99-3762



REV	DESCRIPTION	DET	DATE
E	UPDATED PICTORIALY	MJK	1/03/11
F	ITEM 3, 130054 WAS 128070	EL	11/14/11
G	128502 WAS 128612. ADDED 128487	JJC	08/03/12
H	130322 WAS 126746; 130326 WAS 126745; ADDED 508511	HKS	6/13/13



NOTES:

- 1 MAXIMUM RECOMMENDED STROKE .500
- 2 FOR USE WITH THE 225/245 TOOL, USE ATTACHMENT P/N 119400-1 AND STROKE LIMITER 118362
- 3 FOR USE WITH 2500 TOOL, USE ATTACHMENT P/N 119400-1 AND STROKE LIMITER KIT 119888
- 4 FOR OTHER TOOLS AND/OR OTHER TOOL AND STROKE COMBINATIONS, CONSULT ENGINEERING DEPARTMENT
- 5 SHIP WITH STOP 126747
- 6 SHIP WITH DEFLECTOR 126748-1
- 7 SHIP WITH (2) .030 SHIMS 128290 REFERENCE PB563 FOR PROPER USE

(H)	508511	2	B.H.C.S.	10
	128487	1	DRAWBAR	9
	126748-1	1	UNITIZED DEFLECTOR	8
	128502	1	COLLET	7
(H)	130326	1	GUARD	6
	120095	1	DEFLECTOR	5
	122912	1	BARBED RETAINER	4
	130054	1	UNITIZED CHUCK JAW	3
(H)	130322	1	TOP GUARD	2
	127049	1	ANVIL	1
	PART NO.	QTY	DESCRIPTION	ITEM

IDENTIFICATION PER SPEC 42-311: ★ ETCH		HUCK INTERNATIONAL, INC., I.S.D 1 CORPORATE DR KINGSTON, NEW YORK 12401	
ITAR/ECCN: EAR99		NOSE ASSEMBLY -07 LGP	
SCH B#: 8467.99.0190		FINAL ASSY: FOR USE WITH 206-375	
HTS: 8467.99.0190		ENG: MVM CK: DATE: 9/05/02 SCALE: 2:1	
		B	99-3762