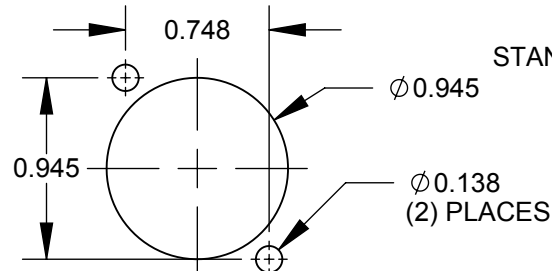


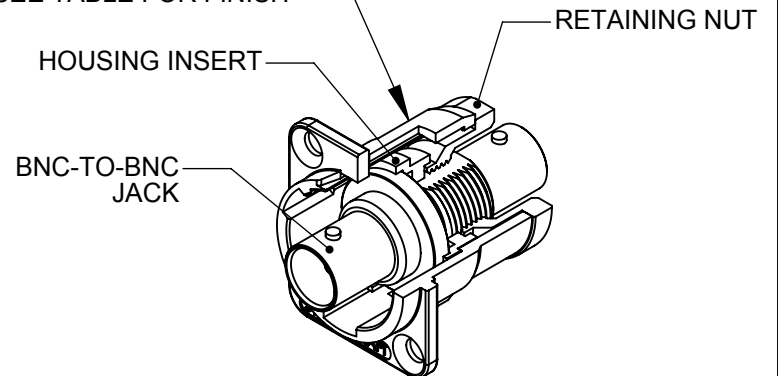
M3 x 0.5  
METRIC THREAD  
(2) PLACES

**EHBNC2M3 & EHBNC2BM3**

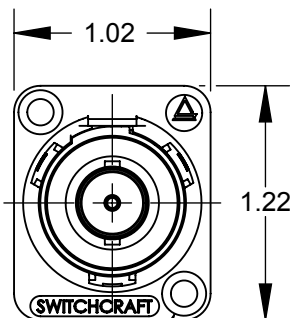


**RECOMMENDED  
PANEL CUT-OUT**

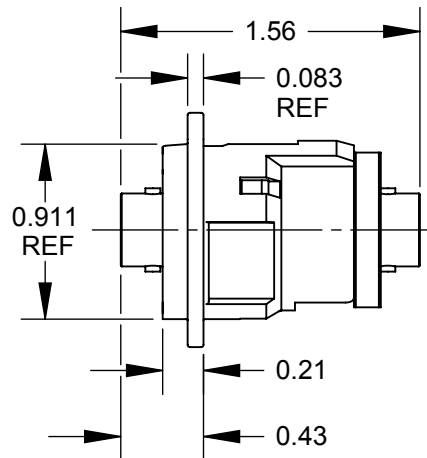
STANDARD E SERIES HOUSING  
SEE TABLE FOR FINISH



**EHBNC2 SHOWN**



✓ Ø0.138 THRU  
✓ Ø0.230 X 82°  
(2) PLACES



**NOTES:**

**1. MATERIALS:**

HOUSING - ZINC ALLOY

HOUSING INSERT - THERMOPLASTIC, BLACK

RETAINING NUT - THERMOPLASTIC, BLACK

BNC JACK - COPPER ALLOY, NICKEL PLATED

**2. THIS PRODUCT IS RoHS COMPLIANT.**

PART NUMBER	HOUSING FINISH	MOUNTING HOLES
EHBNC2	NICKEL PLATED	COUNTERSINK FOR #4 FLAT HEAD SCREWS
EHBNC2B	BLACK CHROME	COUNTERSINK FOR #4 FLAT HEAD SCREWS
EHBNC2M3	NICKEL PLATED	M3 x 0.5 THREAD
EHBNC2BM3	BLACK CHROME	M3 x 0.5 THREAD

**CUSTOMER DRAWING**

					<div>UNLESS OTHERWISE SPECIFIED</div> <div>1. ALL DIMENSIONS IN INCHES</div> <div>- TWO PLACE DECIMALS     ±0.02</div> <div>- THREE PLACE DECIMALS    ±0.005</div>	THIS DRAWING DESCRIBES A DESIGN CONSIDERED PROPRIETARY IN NATURE, DEVELOPED AND MANUFACTURED BY SWITCHCRAFT INC. AND IS RELEASED ON A CONFIDENTIAL BASIS FOR IDENTIFICATION PURPOSES ONLY.											
						SIZE	WIDTH		MULT		LBS/M		TEMPER				
						FINISH						MATERIAL					
						SPEC No.						SPEC No.					
						FIRST USED ON				SCALE 1:1		Switchcraft®					
						DATE DRAWN	BY	CHKD		APVD							
						5/5/03	MA	MA 10/31/03		MA 10/31/03							
C	26415	7/17/09	RS	TJK	SHEET    1                      OF    1												
REV	ECO NUMBER	DATE	BY	APVD													
REVISIONS					DO NOT SCALE DRAWING	NAME   E SERIES CONNECTOR, BNC FEEDTHROUGH, RoHS				PART No.    EHBNC2 SERIES				REV C			